



## The Role of Oral Appliance Therapy in Obstructive Sleep Apnoea: a review

Journal:	<i>European Respiratory Review</i>
Manuscript ID	ERR-0257-2022.R1
Manuscript Type:	Invited Review
Date Submitted by the Author:	n/a
Complete List of Authors:	Johal, Ama; Barts & The London Queen Mary's School of Medicine and Dentistry, Oral Growth and Development Hamoda, Mona; Department of Oral Health Sciences, Faculty of Dentistry, University of British Columbia Almeida, Fernanda; University of British Columbia, Oral Health Sciences Marklund, Marie; Umeå Universitet Medicinska fakulteten, Odontology; Tallamraju, Harishri; Barts & The London Queen Mary's School of Medicine and Dentistry, Oral Bioengineering
Keyword:	Oral appliances therapy, Mandibular advancement, Obstructive sleep apnoea

SCHOLARONE™  
Manuscripts

## The Role of Oral Appliance Therapy in Obstructive Sleep Apnoea: a review

Ama Johal\*, Mona M. Hamoda\*\*, Fenranda R. Almeida\*\*, Marie Marklund\*\*\* and Harishri Tallamraju\*

\*Oral Bioengineering, Institute of Dentistry, Queen Mary, University of London, UK

\*\* Department of Oral Health Sciences, Faculty of Dentistry, University of British Columbia, Vancouver, Canada

\*\*\*Department of Otolaryngology, Medical Faculty, Umea University, Umea, Sweden

### Correspondence:

Professor Ama Johal

Institute of Dentistry, Turner Street, Whitechapel, London E1 2AD. England, UK

E-mail: [a.s.johal@qmul.ac.uk](mailto:a.s.johal@qmul.ac.uk)

### Summary:

This paper provides clinicians a review of the important role of oral appliance therapy in the management of adult patients with obstructive sleep apnoea. It addresses all the key areas of mode of action, rationale, practice guidelines, predictors and their impact on a range of health outcomes.

## The Role of Oral Appliance Therapy in Obstructive Sleep Apnoea: a review

### Abstract:

There is now widespread recognition within the world of sleep medicine of the increasing importance of dental sleep medicine and in particular the role of oral appliance therapy (OAT) in the management of adults with obstructive sleep apnoea (OSA). For the purpose of this review, the term OAT refers to a custom-made intra-oral appliance, which acts to posture the mandible in a forward and downward direction, away from its natural resting position. Whilst nasally-applied continuous positive airway pressure (CPAP) remains the 'Gold standard' in non-surgical OSA management, OAT remains the recognised alternative treatment.

This review of OAT aims to provide an evidence-based update on our current understanding of their mode of action, exploring the potential anatomical and physiological impact of their use in preventing collapse of the upper airway; the current clinical practice guidelines, including the recently published National Institute of Clinical Excellence (NICE) 2021 guidance, in conjunction to the American Academy of Sleep Medicine and American Academy of Dental Sleep Medicine; optimal design features, comparing the role of custom-made versus non-custom OAT and the importance of titration in achieving a dose-dependent effect; patient predictors, preference and adherence to OAT; their impact on a range of both patient- and clinician-centred health outcomes, with a comparison to CPAP; the limitations and side-effects of providing OAT and finally a look at future considerations to help optimise the delivery and outcomes of OAT.

**Key words:** Oral appliances therapy; Obstructive sleep apnoea; Mandibular advancement

### Introduction:

OSA is a common sleep-related breathing disorder, characterised by repeated collapse of the pharyngeal airway with resultant apnoeas, hypopnoeas and sleep arousal. Furthermore, there is recognition of the significant adverse health outcomes of untreated OSA for the patient, their partner and the wider community (1). Severe long-term effects of this disease include excessive daytime sleepiness, cognitive dysfunction, hypertension, impaired quality of life, and increased cardiovascular morbidity and mortality (2). Thus whilst continuous positive airway pressure (CPAP) remains the most efficacious and commonly prescribed treatment in OSA, the importance of understanding the role and use of oral appliance therapy (OAT) as an acceptable alternative should be a key part of our multidisciplinary care pathway. OAT is a non-invasive treatment for mild-moderate OSA and reduces apnoeas/hypopnoeas by enlarging the cross-sectional upper airway dimension via anterior displacement of the mandible and the attached tongue, resulting in improved upper airway patency (3, 4). Furthermore, other non-surgical treatments include lifestyle change and weight reduction, and behavioural modifications such as changing sleep postures. However, the former is advised for mild OSA non-symptomatic OSA patients and the latter is prescribed for mild positional sleep apnoea (5).

### Terminology and Classification:

An overview of the nomenclature of oral appliances used to treat OSA is also worth considering, given there is no international agreement on their terminology. There remains a range of terms, from

1  
2  
3 mandibular advancement splints/device/appliances (MAS/MAD/MAA), through to mandibular  
4 repositioning appliance/device (MRA/MRD). All of which act in common to posture the mandible, to  
5 varying degrees, in a forward and downward direction, away from its natural resting position.  
6 Furthermore, oral appliances can be broadly classified into custom-made (titratable/non-titratable)  
7 and non-custom or 'boil & bite' devices (titratable/non-titratable). The former are made directly from  
8 either a physical impression or digital scan of the patient's dentition and a bite registration. They are  
9 either manufactured as a single appliance, known as a monobloc, incorporating a predetermined  
10 degree of mandibular protrusion or as a dual appliance, with separate components for the maxillary  
11 and mandibular dentition and some integral 'locking' mechanism that subsequently permits  
12 adjustment in the amount of mandibular advancement required. The present review will use the term  
13 OAT to describe a custom-made titratable appliance.  
14  
15  
16  
17

18 In contrast, non-customised appliances are purchased directly by the patient, in a prefabricated state  
19 and typically offer a limited, if any, scope for adjustment of mandibular protrusion. Some  
20 manufactures have attempted to develop semi-customised devices, in which the patient themselves  
21 attempts to undertake a moulding of their maxillary & mandibular dentitions, prior to returning for  
22 fabrication of the appliance. The prefabricated 'boil and bite' offer the advantages of being more  
23 readily available and less costly. However, a recent systematic review and meta-analysis  
24 demonstrated that not only customised OAT significantly more effective in treating OSA, but they  
25 were also much better tolerated and preferred by patients, due to their superior retention and fit (6)  
26 As such, the custom-made titratable appliance remains the principle recommended choice of  
27 treatment (see Clinical Guidelines and Practice Parameters for OAT below).  
28  
29  
30  
31  
32

### 33 **Mode of action:**

34 The pharyngeal airway is rather unique in structure, being completely devoid of any skeletal  
35 framework, which in turn leaves it highly susceptible to collapse of its surrounding anatomical soft  
36 tissues. A range of imaging modalities have allowed us to better understand the impact of OAT on the  
37 pharyngeal airway space and therefore the role these devices play in alleviating OSA. In line with the  
38 multifactorial aetiology of collapse of the pharyngeal airway, OAT may well act by a variety of  
39 mechanisms, which can be classified into the following:  
40  
41  
42  
43

#### 44 **Anatomical:**

45 *Direct anatomical action:* In posturing the mandible in a downward and forward direction, OAT directly  
46 acts to increase the size of the pharyngeal airway, through a range of muscular attachments to the  
47 mandible (e.g. genioglossus) (7), as such the tongue is drawn forwards and to a lesser extent the soft  
48 palate through further muscular attachments (e.g. palatoglossus and pharyngeal constrictor muscles).  
49 Thus we observe an increase in the post-lingual (i.e. oro- & hypo-pharynx) and post-palatal (i.e. velo-  
50 pharynx) airway spaces (8-12). However, through the use of 3D videofluoroscopy, magnetic resonance  
51 imaging, computerised tomography and drug-induced sleep nasendoscopy (DISE), we have come to  
52 appreciate that the resultant increase in airway dimension is not limited to the antero-posterior  
53 dimension (13, 14). In fact, the greatest observed increase is in the lateral dimension, thus accounting  
54 for the significant improvement observed in response to OAT (10). Several imaging studies using cone-  
55 beam computer tomography (CBCT), magnetic resonance imaging (MRI) or DISE have demonstrated  
56 a significant increase in upper airway volumes due to mandibular advancement, predominantly in the  
57  
58  
59  
60

1  
2  
3 velopharynx region (15-17). Furthermore, MRI investigating the effects of mandibular advancement  
4 on the tongue observed an increase in vertical tongue length in the anterior region (18). The authors  
5 also observed an increase in the distance from the soft palate as the tongue moved caudally (18). The  
6 authors attributed these changes to the thickness of the oral appliance worn and increase  
7 genioglossus activity due to mandibular protrusion (19-21). In relation to the soft palate, the authors  
8 found a decrease in the area and width due to mandibular advancement (18). These findings are  
9 consistent with studies using cephalometric analysis (22, 23).  
10  
11

12  
13 *Indirect anatomical action:* If we consider for a moment the pharyngeal airway as analogous to a long  
14 thin collapsible tube. It is then conceivable that OAT in posturing the mandible forward places the  
15 surrounding soft tissues under tension and thereby acts indirectly to prevent pharyngeal airway  
16 collapse, much like stretching a long thin party balloon, by pulling at each end would ensure it did not  
17 collapse. This structural change may also account for the observed reduction in CPAP pressure and  
18 improved comfort when used in conjunction with OAT (24). The pharyngeal/upper airway patency is  
19 balanced by factors such as the subatmospheric intraluminal pressure during inspiration and upper  
20 airway dilator muscle activity influenced by the upper airway dimensions and neuromuscular reflex  
21 interactions. Ng et al. (2003) demonstrated that OAT significantly reduces the upper airway closing  
22 pressures in moderate sleep apnoea patients in different stages of sleep (3). The mechanism of action  
23 behind the improvement in upper airway collapsibility remains unclear however, Isono et al.  
24 attributed this to the stretching of the soft palate during mandibular protrusion. This leads to the  
25 tightening of the velopharynx because of the connection of the lateral wall of the soft palate to the  
26 base of the tongue through the palatoglossal arch (25). Similarly, Bamagoo et al. (2019) demonstrated  
27 that improvement in upper collapsibility is significantly associated with different mandibular  
28 advancement positions i.e. 0% "habitual bite", 50% and 100% of maximal comfortable mandibular  
29 advancement. The authors observed a significant reduction in the upper airway closing pressures in a  
30 dose-dependent manner across the three mandibular positions. However, no change was observed in  
31 the genioglossus muscle activity and responsiveness (26).  
32  
33  
34  
35  
36  
37

38  
39 *Physiological action:* Pharyngeal airway patency is maintained through the action of a range of upper  
40 airway dilator muscles. The role of OAT in stimulating upper airway dilator muscle action was explored,  
41 using bi-polar surface electrodes to assess genioglossus and geniohyoid muscle activity (20). The  
42 researchers found that a significant stimulatory effect was observed in response to mandibular  
43 advancement and a potential physiological action proposed (see Figure 1). This has been anecdotally  
44 reported by patients, who note reduced levels of symptoms over a period of proceeding nights, when  
45 they stop using their OAT, after continuous use. Equally, this 'carry over effect' has both been  
46 observed and is accounted for in a number of crossover clinical trials, necessitating a sufficiently  
47 adequate intervening washout period (27). More recently, a number of research teams have explored  
48 the role of hypoglossal nerve stimulation, using direct and indirect stimulation, and discovered a  
49 potential role for genioglossus muscle stimulation in the management of OSA (28-30). However, as  
50 mentioned above, Bamagoo et al. (2019) failed to observe any changes in genioglossus activity with  
51 mandibular advancement and argued that pharyngeal muscle functions are less likely to lead to an  
52 improvement in OSA patients using OAT (31). Nonetheless, the findings should be interpreted with  
53 caution as the study was limited to a small sample size (n = 18) with predominantly obese patients  
54 with severe OSA, rendering the findings less generalisable (31). Conversely, Almeida et al detected a  
55 decrease in the genioglossus muscle activity in a case-report of a 54-year-old male patient with severe  
56 OSA with mandibular protrusion and associated the therapeutic outcomes of OAT with anatomical  
57  
58  
59  
60

changes instead of upper airway muscle activity. However, given the inherent limitations of a single case-report, further studies are needed with a larger sample size to confirm the association between mandibular advancement and genioglossus muscle (19).

### Clinical Guidelines and Practice Parameters for OAT:

There are currently two key evidence-based clinical guidelines and practice parameters available for clinicians on the use of OAT in OSA. The American Academy of Sleep Medicine and American Academy of Dental Sleep Medicine produced a joint updated guideline in 2015 (32). The guideline recommended that OAT be prescribed for adult OSA patients who were intolerant of CPAP or, importantly expressed preference for OAT.

More recently in UK, National Institute of Clinical Excellence (5) published its guidance, recognising the role of OAT in OSA. It too suggested that for adult patients with OSA that are unable to tolerate or declined CPAP, they should be offered a customised or semi-customised OAT as an alternative. However, caution was to be exercised with semi-customised OAT and that they may be inappropriate, due to their potentially impaired fit, for those with:

- Active periodontal disease or untreated dental decay
- Few or no teeth
- Generalised tonic-clonic seizures

Both guidelines recognised the importance of OAT being provided by a trained dentist, familiar with dental sleep medicine to obtain informed consent, select the optimal design and titration level, overseeing both short- and long-term follow-up, to ensure optimum comfort and therapeutic effectiveness. They also highlight the opportunity of considering a follow-up sleep study with the OAT *in-situ* to objectively assess changes in sleep physiology.

### Oral appliance design features:

With the emergence of a plethora of different designs, little evidence exists of the potential benefits of different OAT designs, as such the following provide clinical guidance on the principle characteristics that should be sought:

1. Retention. Oral appliance retention has been defined as 'resistance of the appliance to vertical movement away from the tissues' (33) and as 'that quality inherent in the oral appliance acting to resist the forces of dislodgement along the path of insertion' (34). Optimal tooth retention is a prerequisite for any OAT to ensure maximum therapeutic benefit. If the appliance becomes disengaged from the dentition during sleep, it will naturally fail to maintain the mandible in its forward posture, but rather allow it to rotate downwards and backwards (see 4. below). Whilst there is no specific number of teeth required for OAT provision, the greater the number of healthy teeth in the jaw, the greater the retention. Millman et al. suggested at least six teeth be present per jaw, with a distribution of one or more being posteriorly positioned (35). It should be noted that OAT has been provided to edentulous patients, with the use of dental implants but this may require pre-implant surgery to ensure sufficient bone to accommodate the implants (36).

2. Mandibular titration. Given that patients with OSA can present with a range of severity, it is not possible to predict the exact amount of mandibular protrusion necessary for any given patient. Contemporary designs of oral appliances should permit the mandible to be advanced in a gradual and incremental manner, to achieve maximum therapeutic benefit (32, 37-39). A range of different advancement mechanisms is available, dependent on the OAT design. This titration phase may last up to a few months in OSA patients and ideally can be undertaken by the patient (under instruction) if the OAT design incorporates a self-adjustment mechanism of advancement, which becomes very cost-effective. Alternatively, this can be performed by a trained dentist but as such, requires regular review. Whilst the titration process has the short-term disadvantage of not providing immediately effective treatment, it offers the greater long-term advantage that the patient can acclimatise to the OA, in the absence of discomfort in the teeth or jaws and thereby increasing the likelihood of improved patient adherence. Furthermore, applying the principle of personalised medicine, the importance of determining a dose-dependent effect specific to the patient's needs, minimises the risks of unwanted tooth movements as a side-effect of OAT. On this basis, current appliances can be classified into 1st, 2nd or 3rd generation OAT (Table 1). Whilst there is evidence from an experimental setting, in which a dose-dependent effect is achieved by mandibular titration using a remote advancement activation, this is yet unpractised in routine patient care with OAT (40). Thus, clinicians routinely advise patients to use subjective criteria, such as symptomatic improvement in determining the amount of mandibular titration required to achieve maximum therapeutic effect. Furthermore, this is also a cost-effective approach to adopt, before organising a follow-up sleep study to determine the impact of OAT on sleep physiology.

**Table 1.** Classification of the oral appliances into 1st, 2nd and 3rd generation designs

<b>Generation</b>	<b>Design</b>	<b>Limitation/Advantage</b>
<i>1<sup>st</sup> Generation</i> (Figure 2)	One-piece, monobloc	<ul style="list-style-type: none"> <li>- No opportunity for incremental advancement, as the appliance is fabricated with a pre-determined forward position</li> <li>- Higher degree of discomfort and decreased patient adherence</li> </ul>
<i>2<sup>nd</sup> Generation</i> (Figure 3)	Two-piece, duobloc	<ul style="list-style-type: none"> <li>- Permitting incremental advancement but requires a clinician input</li> <li>- Less cost effective</li> </ul>
<i>3<sup>rd</sup> Generation</i> (Figure 4)	Two-piece, duobloc (Regarded as the 'gold standard')	<ul style="list-style-type: none"> <li>- Permit the patient to self-adjust the amount of mandibular advancement, in an incremental manner</li> <li>- More cost-effective as requires minimal clinician input</li> </ul>

3. Occlusal coverage. In providing OAT, it's important that trained dentists ensure that the device covers the occlusal surfaces of all teeth present. This ensures that no unwanted vertical change (over-eruption) of posterior teeth takes place and in turn prevents any occlusal interferences and bite disturbances.

4. Minimal anterior vertical opening. The accompanying muscle relaxation, during sleep, typically permits the mandible to rotate downwards and backwards, with an accompanying reduction in tongue space and narrowing of the pharyngeal airway space. Whilst OAT aims to advance the mandible, it is

1  
2  
3 therefore an important design feature that such devices also act to minimise the amount of vertical  
4 opening, in order to achieve their optimal effectiveness (12, 41).  
5

### 6 Patient adherence and treatment responders

7  
8 Patient adherence to OAT was limited to subjective data (42-44), until the introduction of objective  
9 monitoring of oral appliance wear time with the help of a thermal micro-sensor. The micro-sensor,  
10 embedded in the oral appliance design, calculates the actual wear time by measuring temperature  
11 every 15 minutes and then transforms this information into wear time when the temperature ranges  
12 between two specific values. In comparing subjective adherence data with objective data, Dieltjens et  
13 al. reported a mean wear time of 7.2 hours (6.2 – 7.8 hours) and 7.1 hours (6.7 – 7.7 hours),  
14 respectively (45). Furthermore, a mean overestimation of 30 minutes is observed between subjective  
15 and objective adherence data (45, 46). Based on patient-reported data, adherence to OAT appears to  
16 decline over time (47). Hoffstein et al. reported a wide range of adherence (4-76%) in the first year of  
17 appliance use. In a further study, adherence after one year was 83% (45) declining to 62-64% after 4  
18 to 6 years (48, 49). Recent long-term adherence data demonstrated that 93.3% of the sample (n=172)  
19 used the oral appliance for >4 hours/night on >4 days/week and 91.3% used the oral appliance for >  
20 6 hours/night at 5-year follow-up (50). Patient preference for the continuation of OAT was 96.5% at  
21 the 5-year follow-up (50). However, the study lacked objective adherence data and 48% of initially  
22 recruited patients withdrew from the study before the 5-year evaluation which might have  
23 confounded the findings of the study. Recently, Vanderveken et al. and Johal et al. reported on the  
24 safety and feasibility, at 3- & 18-months respectively, of objective measurement techniques with OAT  
25 in the same cohort of patients, who demonstrated a range of sleep-disordered breathing, from snoring  
26 to OSA (6, 46). Patient adherence to OAT might be influenced by patient and disease characteristics,  
27 type of appliance i.e. custom or ready-made, treatment side-effects and psychosocial factors (51).  
28  
29

30  
31 Studies exploring the influence of patient and disease characteristics have found no association  
32 between objective adherence and anthropometric characteristics, polysomnographic parameters,  
33 and excessive daytime sleepiness (52). However, concerning disease characteristics, Nerfeldt and  
34 Freiburg observed that patients with a greater number of respiratory arousals (arousers)  
35 demonstrated higher adherence (85%) than patients with oxygen desaturations (desaturators). The  
36 higher adherence rate in the arousers was attributed to the significant improvement in the Epworth  
37 sleepiness scale (ESS) scores, as compared to the desaturators (53). Furthermore, factors such as OAT  
38 as the first line of treatment and complete symptom resolution are associated with higher adherence  
39 rates (54). Recent reports also indicate that withdrawal, due to lack of symptom resolution, is  
40 observed more in severe vs. mild vs. moderate OSA patients ( $p = 0.008$ ) and obese vs. non-obese  
41 patients ( $p = 0.32$ ) (50). Interestingly, no studies have been published exploring the association  
42 between adherence to OAT and factors such as race and ethnicity-based differences. A low socio-  
43 economic index is only considered a barrier to accessing OAT, as its influence on treatment adherence  
44 is yet to be explored (55).  
45  
46

47  
48 In relation to the type of OAT and its influence on patient adherence, studies consistently lean towards  
49 a custom-made titratable OAT, as it favours increased patient-reported adherence and patient  
50 preference (56-60). This is in line with the current NICE guidelines which also recommended custom-  
51 made OAT, as lack of retention with the ready-made OAT is the most frequently cited reason for  
52 discomfort and non-adherence (5). Johal et al. demonstrated an increased preference and response  
53 for custom-made OAT in comparison to ready-made. The authors argued that the 'one-size fits all'  
54  
55  
56  
57  
58  
59  
60



concept behind ready-made oral appliances might compromise the retention of the appliance since individuals differ morphologically (59). Likewise, Vanderveken et al reported similar findings with an identical trial. The authors observed a response rate of 60% with custom-made OAT and 30 % with ready-made OAT (56). These response rates are consistent with a three-arm crossover RCT in which a response rate of 38% and 49% was observed with ready-made and semi-custom-made oral appliances, respectively. Whist, a response rate of 45% was reported in relation to custom-made OAT (58). Furthermore, patient preference for custom-made OAT is also apparent in the higher number of nights per week and the number of hours per night that the appliance was used (56, 59). The findings are consistent with a systematic review and meta-analysis comparing custom-made OAT with ready-made OAT (61). Moreover, as OAT for OSA is entirely dependent on patient behaviour, patient preference cannot be disregarded. However, the above-discussed studies are limited to self-reported use and lack an objective adherence measurement since objective adherence monitors were only employed recently (46, 62).

In relation to the side-effects mentioned above, lack of treatment effects or discomfort and/or pain due to OAT is the most common patient-reported reasons for early discontinuation (< 2 years) (49, 63, 64). Furthermore, such side-effects are observed more with ready-made OAs leading to higher rates of treatment discontinuation, compared to custom-made OAT. Thus, regular follow-up or early intervention of the side-effects is crucial for encouraging patient adherence and for mitigating the risk of early discontinuation (54, 65).

OAT adherence is observed to be significantly associated with psychological and social factors, such as mood and perception of treatment benefits, and bed partner satisfaction levels (66, 67). Specifically, Type-D personality, a combination personality type of negative affectivity was found to be negatively attributed to patient adherence (68). In relation to bed partners, Dieltjens et al. found a significant correlation between objective adherence and partner perceived reduction in snoring (68). Likewise, a holistic improvement in patients and their partner's sleep physiology due to OAT had a positive impact on their emotional and physical relationship (69). Similarly, Gjerde et al. observed that sharing of bedroom in OSA patients can be attributed to increased adherence to OAT (67). Hence, partner's perception or their influence is crucial in OSA patients as the therapeutic outcomes of OAT also extend the partners. More recently, patient-tailored therapy in combination with objective adherence monitoring has observed a significant increase in adherence to OAT (70). Notwithstanding this, evidence in terms of psychological and social factors concerning OAT is highly inconclusive in comparison to CPAP adherence (51).

Furthermore, the above-mentioned factors can also aid in predicting the success (baseline AHI reduction >50%) rate of OAT and patients' may be categorised as responders or non-responders to treatment. However, successive treatment responders are further divided into; AHI < 10; AHI reduction > 50% (71). Studies have consistently observed clinical traits, such as lower age group (< 69 years), lower BMI, smaller neck circumference and lower AHI in responder groups (50, 71, 72). Anatomical traits such as a retracted maxilla and mandible are also identified as strong predictors for successful treatment (71-73). Brown et al. observed an en-bloc (all together) forward movement of the posterior tongue in patients with lower AHI. Whilst, minimal movement of the posterior tongue and increased deformation of the tongue shape was reported in patients with higher AHI when adjusted for BMI (74). Consequently, responders have demonstrated greater naso- and oropharyngeal anterior tongue movement as compared to non-responders (75). Concerning polysomnographic

parameters, responders appear to have lower loop gain, whilst low oxygen saturations are seen in non-responder groups (71, 72, 76, 77). This is also reflected in patient adherence as discussed in the above section. Consequently, the above evidence can be applied by sleep clinicians whilst prescribing treatment to patients with OSA. Table 2 summarises detailed evidence concerning factors influencing responders and non-responders to OAT.

**Table 2.** Characteristics of responders and non-responders to oral appliance therapy

<b>Characteristics</b>	<b>Responders</b>	<b>Non-responders</b>
<i>Clinical</i>	Younger individuals (71,72) Lower BMI (50,71,72) Shorter neck circumference (50, 71, 72) Sex – Female (71,72) Lower prevalence of cardiovascular disease (76)	Older individuals (71, 72) Higher BMI (50, 71, 72) Larger neck circumference (50, 71, 72) Male (71, 72) Increased cardiovascular burden (76)
<i>Anatomical</i>	Retracted maxilla or mandible (50, 71, 72) Lower anterior and posterior facial height (71) A shorter distance from the hyoid bone to the third cervical vertebrae (71) A shorter airway length (71) Forward movement of the tongue (74, 75)	Nasal abnormalities (71) Minimal movement of tongue (74,75)
<i>Polysomnographic parameters</i>	Low loop gain (77) Low AHI (77) A higher arousal threshold (77)	Low oxygen desaturations (77)

### **Patient preference and treatment effectiveness (versus CPAP)**

Patient preference is an integral part of patient-centred care as it plays an important role in adherence to and acceptance of treatment and therefore has an impact on health outcomes (78, 79). There is a move towards gaining a better understanding of patient preferences and values associated with treatment, and thus tailor to patient needs and circumstances (78, 80). Taking patient preference into consideration helps increase patient engagement in the treatment decision-making process and increase their sense of ownership over their treatment (80).

The majority of the trials that compared preference for CPAP with that for OAT found higher preference for the latter (81). Five out of the seven cross-over trials assessing preference showed higher preference for OAT, one showed slightly more preference for CPAP, while another showed equal preference for both (81, 82).

CPAP has shown to consistently and effectively normalise respiratory parameters and is superior to OAT in doing so (32, 83-86). It has been better able to reduce the Apnoea Hypopnea Index (AHI)

1  
2  
3 compared to OAT, with a mean difference in AHI improvement by 6 or 7 events/hour (32, 85, 87).  
4 Similar trends have been observed with the oxygen desaturation index and minimal oxygen saturation,  
5 for which CPAP demonstrated more beneficial effects (83, 85). Nonetheless, both CPAP and OAT  
6 consistently demonstrate similar improvements in symptoms and health related quality of life  
7 measures, which are important components of disease management. Comparable effects on daytime  
8 sleepiness and functioning, general physical and mental health, driving simulation assessment and  
9 nocturia have been demonstrated by multiple randomised controlled trials (RCTs) and meta-analyses  
10 (82, 83, 88-91). Furthermore, the positive effects of CPAP and OAT on daytime sleepiness and  
11 functioning continue to be comparable in the long term, as demonstrated by a 10-year follow up study  
12 (92).  
13  
14  
15

16 The similar positive effect on outcomes that is demonstrated by CPAP and OAT is explained by their  
17 comparable effectiveness (81). It has been hypothesised that the sub-optimal efficacy of OAT is  
18 compensated for by its superior adherence relative to CPAP, resulting in similar or better overall  
19 clinical effectiveness for both treatments (46, 83). Since the efficacy of a prescribed treatment  
20 modality is not synonymous for 'being treated' and given that OSA is a chronic condition that requires  
21 life-long adherence to therapy, adherence is a major determinant of treatment outcomes. Indices  
22 have been developed and utilised to assess the real-world effectiveness of treatment (79). These  
23 indices of effectiveness seem to be better indicators of long-term health benefits and include Mean  
24 Disease Alleviation (MDA), Sleep Adjusted Residual AHI (SARAH Index), Apnoea Burden and Effective  
25 AHI (eAHI) (81, 93-95). They incorporate a measure of efficacy and adherence and additionally, the  
26 latter three incorporate hours of usage relative to total sleep time. Indeed, attempts to compare CPAP  
27 and OAT based on these indices of effectiveness have shown comparable or improved MDA and  
28 SARAH Index for both treatments (46, 93, 94, 96).  
29  
30  
31  
32  
33

34 OAT has also shown to reduce the intensity and frequency of snoring, as assessed both objectively and  
35 subjectively (97-99). However, there is paucity of research investigating the effect of OAT on fatigue,  
36 headaches, anxiety and periodic leg movements. Nevertheless, available data shows a positive effect  
37 of OAT on the aforementioned (98-101).  
38  
39

#### 40 **Impact of treatment on Blood Pressure and Other Cardiovascular Outcomes**

41 OSA is known to be an independent risk factor for hypertension and cardiovascular disease (102, 103).  
42 OSA causes repeated blood pressure (BP) elevation and tachycardia secondary to sympathetic  
43 stimulation (104). Three meta-analyses (105-107) comparing the effect of CPAP and OAT on BP  
44 reduction, showed both modestly improved BP and were comparable in their reduction of both  
45 systolic and diastolic BP. Pengo et al (107) in their pooled analysis of RCTs showed a mean BP reduction  
46 with CPAP of -2.1 mmHg for systolic and -1.92 mmHg for diastolic BP and a mean BP reduction with  
47 OAT of -1.3 mmHg for systolic and -1.1 mmHg for diastolic BP. Furthermore, they identified three  
48 subgroups of patients who showed more favourable responses as being those younger than 60 years  
49 old, with uncontrolled BP at baseline, or with severe oxygen desaturation. The European Respiratory  
50 Society guideline found a higher impact of CPAP than of OAT on systolic night-time blood pressure  
51 decrease in severe OSA (86). Albeit seemingly modest, a 2mmHg reduction in BP has been associated  
52 with a 3% reduction in all-cause mortality in the general population (108).  
53  
54  
55  
56  
57

58 Nocturnal BP non-dipping has been associated with incident cardiovascular disease in OSA patients  
59 (109), yet only a few studies so far have assessed the effect of OSA treatment on this (106). A trial  
60

1  
2  
3 comparing CPAP to OAT showed that the frequency of diastolic BP dipping was higher in the OAT group  
4 compared to the CPAP group, another trial showed that only 23.5% of non-dippers at baseline  
5 converted to nocturnal dipping following 1-2 months of OAT (110, 111).  
6

7  
8 Endothelial dysfunction is a major predictor of late cardiovascular events and has been linked to the  
9 severity of OSA (112). OAT does not seem to have an effect on endothelial dysfunction as indicated by  
10 the evidence currently available from RCTs. An RCT that assessed the impact of 2 months of OAT on  
11 endothelial dysfunction in severe, non-sleepy OSA patients with no overt cardiovascular disease  
12 showed no positive effects (113). Similarly, a recently published RCT comparing the effect of CPAP and  
13 OAT on effectively treated mild OSA patients showed no impact of either treatment on endothelial  
14 function or BP, following one year of treatment (114). However, both CPAP and OAT were equally  
15 effective in reducing the risk of mortality in patients with severe OSA in an observational study (115)  
16 (39). Additionally, a recently published trial demonstrated reversal of left ventricular hypertrophic  
17 remodelling in responders to OAT following 6 months of therapy (116).  
18  
19

20  
21 Systemic inflammation and metabolic disorders are amongst the mechanisms linking OSA to  
22 cardiovascular disease (117). A trial that prospectively followed up mild to moderate OSA patients for  
23 1 year found improved arterial stiffness, glucose metabolism and insulin resistance with OAT in  
24 addition to a reduction in the levels of the inflammatory biomarker fibrinogen (118). However, an RCT  
25 comparing OAT to placebo showed no effect of OAT on circulating inflammatory and metabolic  
26 biomarkers in severe OSA patients, with no overt cardiovascular disease following 2 months of OAT  
27 (119). Only a few studies have evaluated the effect of OAT on oxidative stress, one showed a beneficial  
28 effect on serum levels of nitric oxide derivatives following 2 months of OAT, while another RCT that  
29 assessed 1 month of CPAP and OAT showed no significant changes in most oxidative stress parameters  
30 with either therapy (111, 120).  
31  
32  
33

34  
35 While the potential for positive effects regarding cardiovascular events and mortality cannot be ruled  
36 out with CPAP therapy as indicated by observational studies, RCTs namely the Sleep Apnea  
37 Cardiovascular Endpoints (SAVE) trial and the Randomised Intervention with CPAP in Coronary Artery  
38 Disease and Sleep Apnea (RICCADSA) trial assessing the effects of CPAP on cardiovascular outcomes  
39 did not find cardiovascular benefits associated with treatment (121, 122). This was attributed to the  
40 low adherence to therapy (mean adherence of < 4 hours/night), observed in these trials, yet there was  
41 some evidence that there was a reduced risk of adverse events for patients who were adherent to  
42 treatment. Other possible explanations for the lack of cardiovascular benefits could be attributed to  
43 the short follow up duration in these trials, which was insufficient to express the cardiovascular  
44 benefits of therapy (123). Additionally, the benefits of treatment on cardiovascular event risk may be  
45 greater in more symptomatic and more severe disease (severe hypoxemia), which are the groups that  
46 were excluded from the RCTs (121, 122, 124). Therefore, targeting therapy towards specific disease  
47 phenotypes may lead to more positive impact on cardiovascular outcomes (107).  
48  
49  
50

51  
52 Currently, there is a lack of large-scale RCTs comparing the effect of CPAP and OAT on cardiovascular  
53 end points and a lack of long-term studies, with greater than 10 years follow up, assessing the effect  
54 of OAT on morbidity and mortality (106, 125). More research is needed to better understand the role  
55 of treatment on both primary and secondary prevention of cardiovascular disease.  
56  
57

#### 58 **Side-effects of OAT**

59  
60

1  
2  
3 Side effects during the first weeks of OAT are common however, they are generally minor and tend to  
4 resolve with time and depend on the OAT design used, being more common with 1st generation OAT,  
5 due to their inherent inclusion of forward mandibular posturing from the outset. Frequently reported  
6 short-term side effects include excessive salivation, mouth dryness, morning-after occlusal changes,  
7 difficulty chewing and discomfort in the gums, teeth or jaws (79, 126). Unlike the short-term, the long-  
8 term side effects of OAT are progressive and irreversible. Findings from meta-analyses investigating  
9 the nature of these side-effects indicate that the changes that take place in adults are mainly dental,  
10 in the form of tooth movements and occlusal changes (127, 128). A reduction in overjet of 1.9 mm  
11 and overbite of 2.3 mm (horizontal and vertical overlap of the incisors, respectively) have been  
12 observed following mean treatment duration with OAT of 11 years (129). The reduction in overjet and  
13 overbite occur mainly due to changes in angulation of the upper and lower incisors namely,  
14 retroclination of the upper incisors and proclination of the lower incisors (128). A study that followed  
15 up patients for up to 21 years of OAT showed that the retroclination for upper incisors progressed at  
16 a relatively constant rate of -0.5 degrees/year, while the rate of proclination of the lower incisors was  
17 also progressive up to approximately 19 years (130). Despite these dental movements, it has been  
18 shown that the increase in lower incisor angulation does not induce periodontal disease or bone loss  
19 (131).

20  
21  
22 Other dental changes include mesial tipping of the lower molars (anteriorly repositioned relative to  
23 the upper molars), posterior open-bites and anterior cross-bites (127, 128). Duration of appliance use  
24 and the amount of mandibular advancement have been previously linked to the magnitude of side-  
25 effects (132, 133). Despite dental changes being unavoidable regardless of the OAT design, it has been  
26 suggested that the features of the appliance may be associated with more pronounced occlusal  
27 changes. A study investigating occlusal changes following two years of therapy has proposed that OAT  
28 in which the adjustment mechanism is located anteriorly were associated with more dental changes  
29 compared to those in which the mechanism was located posteriorly (134).

30  
31  
32 While these long-term side-effects are well tolerated by some patients and mostly go unnoticed, they  
33 are not so well tolerated by some other patients and could lead to the discontinuation of treatment.  
34 In many instances, even though side-effects may seem substantial, they are outweighed by the  
35 benefits gained from OAT. Nonetheless, all patients need to be informed about possible side-effects  
36 prior to the initiation of therapy and follow-up of OAT by a qualified dentist is crucial.

### 37 38 39 **Future considerations in oral appliance therapy treatment in OSA**

40  
41  
42 Oral appliances represent an effective and well-tolerated anatomical type of treatment for selected  
43 patients with OSA. In the future, it will be important to improve this selection procedure in order to  
44 achieve a more individualized treatment option in relation to other available methods, particularly  
45 compared with CPAP with its more stable mechanism of action. The identification of traits that have  
46 been associated with success, such as a low loop gain, a high arousal threshold, milder pharyngeal  
47 collapsibility, shallower events and tongue base collapse will be simplified by the use of new analyzing  
48 methods of the respiratory sleep recordings and drug-induced sleep endoscopy (135-138). It will also  
49 become necessary to define treatment success from a wider perspective and use new grading systems  
50 that consider a number of variables beyond AHI, to identify OAT responders (139, 140). Improved  
51 appliance design including easier and more precise ways to measure and identify the therapeutic  
52 mandibular position are also important developments for the future (141-143). For the longer-term  
53 outcomes, the use of appliances that continuously measure adherence (45) and efficacy would  
54  
55  
56  
57  
58  
59  
60

equalize the follow-up regimes with those for CPAP. This will be important to receive a better understanding of the influence of comorbidities and side effects in terms of bite changes, on the longer-term treatment outcome. Furthermore, evidence in relation to the mode of action of OAT is still inconclusive and this is reflected in the current review. Hence, further research is needed to confirm the association between OAT and factors such as upper airway patency and genioglossus muscle activity (19). Finally, combinations with other types of OSA therapies, such as those that relocate the head or body into more beneficial positions for improved nightly breathing or future therapies that might be available to overcome non-anatomical etiological traits of OSA, might also increase the usefulness of OAs in the treatment of various groups of OSA patients (144-146).

## LEGENDS

**Figure 1a** Electromyograph showing resting muscle activity in the right masseter (MASSR), left masseter (MASSL), genioglossus (GENGLOS) and geniohyoid (GEN HYD).

**Figure 1b** Electromyograph showing increased muscle activity following oral appliance insertion in the genioglossus (GENGLOS) and geniohyoid (GEN HYD) dilator airway muscles.

**Figure 2** Monobloc (1<sup>st</sup> Generation)

**Figure 3** Example of a 2<sup>nd</sup> generation oral appliance therapy, in which there is some scope to adjust the amount of mandibular advancement. This requires the side connector (Blue) bars to be removed and replaced by a shorter bar.

**Figure 4** Example of a 3<sup>rd</sup> generation oral appliance therapy in which the patient can readily advance the mandible in increments of 0.25 mm with a simple adjustment allen key.

**Table 1** Classification of the oral appliances into 1st, 2nd and 3rd generation designs

**Table 2** Characteristics of responders and non-responders to oral appliance therapy

## References

1. Punjabi NM. The epidemiology of adult obstructive sleep apnea. *Proceedings of the American Thoracic Society*. 2008;5(2):136-43.
2. Deng T, Wang Y, Sun M, Chen B. Stage-matched intervention for adherence to CPAP in patients with obstructive sleep apnea: a randomized controlled trial. *Sleep and Breathing*. 2013;17:791-801.
3. Ng AT, Gotsopoulos H, Qian J, Cistulli PA. Effect of oral appliance therapy on upper airway collapsibility in obstructive sleep apnea. *American journal of respiratory and critical care medicine*. 2003;168(2):238-41.
4. Tsuiki S, Lowe AA, Almeida FR, Kawahata N, Fleetham JA. Effects of mandibular advancement on airway curvature and obstructive sleep apnoea severity. *Eur Respir J*. 2004;23(2):263-8.
5. NICE. Obstructive sleep apnoea/hypopnoea syndrome and obesity hypoventilation syndrome in over 16s  
2021.
6. Johal A, Agha B. Ready-made versus custom-made mandibular advancement appliances in obstructive sleep apnea: A systematic review and meta-analysis. 2018.

- 1
  - 2
  - 3
  - 4
  - 5
  - 6
  - 7
  - 8
  - 9
  - 10
  - 11
  - 12
  - 13
  - 14
  - 15
  - 16
  - 17
  - 18
  - 19
  - 20
  - 21
  - 22
  - 23
  - 24
  - 25
  - 26
  - 27
  - 28
  - 29
  - 30
  - 31
  - 32
  - 33
  - 34
  - 35
  - 36
  - 37
  - 38
  - 39
  - 40
  - 41
  - 42
  - 43
  - 44
  - 45
  - 46
  - 47
  - 48
  - 49
  - 50
  - 51
  - 52
  - 53
  - 54
  - 55
  - 56
  - 57
  - 58
  - 59
  - 60
7. Liu CY, Lu HY, Dong FS, Ma WS, Wang J, Hu XY, et al. Effects of a mandibular advancement device on genioglossus in obstructive sleep apnoea hypopnea syndrome. *Eur J Orthod.* 2015;37(3):290-6.
8. Schwab R, Gupta K, Duong D, Schmidt-Nowara W, Pack A, Gefter W. Upper airway soft tissue structural changes with dental appliances in apneics. *Am J Respir Crit Care Med.* 1996;153(part 2):A719.
9. Ishida M, INOUE Y, SUTO Y, OKAMOTO K, RYOKE K, HIGAMI S, et al. Mechanism of action and therapeutic indication of prosthetic mandibular advancement in obstructive sleep apnea syndrome. *Psychiatry and clinical neurosciences.* 1998;52(2):227-9.
10. Ryan C, Love L, Peat D, Fleetham J, Lowe A. Mandibular advancement oral appliance therapy for obstructive sleep apnoea: effect on awake calibre of the velopharynx. *Thorax.* 1999;54(11):972-7.
11. Ryan CF, Lowe AA, Li D, Fleetham JA. Magnetic resonance imaging of the upper airway in obstructive sleep apnea before and after chronic nasal continuous positive airway pressure therapy. *Am Rev Respir Dis.* 1991;144(4):939-44.
12. L'Estrange PR, Battagel JM, Harkness B, Spratley MH, Nolan PJ, Jorgensen GI. A method of studying adaptive changes of the oropharynx to variation in mandibular position in patients with obstructive sleep apnoea. *Journal of oral rehabilitation.* 1996;23(10):699-711.
13. Johal A, Battagel JM, Kotecha BT. Sleep nasendoscopy: a diagnostic tool for predicting treatment success with mandibular advancement splints in obstructive sleep apnoea. *European journal of orthodontics.* 2005;27(6):607-14.
14. Hong S-N, Won T-B, Kim J-W, Lee CH, Rhee C-S. Upper Airway Evaluation in Patients with Obstructive Sleep Apnea. *Sleep Med Res.* 2016;7(1):1-9.
15. Chan AS, Sutherland K, Schwab RJ, Zeng B, Petocz P, Lee RW, et al. The effect of mandibular advancement on upper airway structure in obstructive sleep apnoea. *Thorax.* 2010;65(8):726-32.
16. Van Gaver H, Op de Beeck S, Dieltjens M, De Backer J, Verbraecken J, De Backer WA, et al. Functional imaging improves patient selection for mandibular advancement device treatment outcome in sleep-disordered breathing: a prospective study. *J Clin Sleep Med.* 2022;18(3):739-50.
17. Dontosos VK, Chatzigianni A, Papadopoulos MA, Nena E, Steiropoulos P. Upper airway volumetric changes of obstructive sleep apnoea patients treated with oral appliances: a systematic review and meta-analysis. *Eur J Orthod.* 2021;43(4):399-407.
18. Ogawa T, Long J, Sutherland K, Chan ASL, Sasaki K, Cistulli PA. Effect of mandibular advancement splint treatment on tongue shape in obstructive sleep apnea. *Sleep and Breathing.* 2015;19(3):857-63.
19. Almeida F, Tsuiki S, Hattori Y, Takei Y, Inoue Y, Lowe A. Dose-dependent effects of mandibular protrusion on genioglossus activity in sleep apnoea. *European Respiratory Journal.* 2011;37(1):209-12.
20. Johal A, Gill G, Ferman A, McLaughlin K. The effect of mandibular advancement appliances on awake upper airway and masticatory muscle activity in patients with obstructive sleep apnoea. *Clinical Physiology and Functional Imaging.* 2007;27(1):47-53.
21. Tsuiki S, Ono T, Kuroda T. Mandibular advancement modulates respiratory-related genioglossus electromyographic activity. *Sleep and Breathing.* 2000;4(2):53-7.
22. Hoffstein V. Review of oral appliances for treatment of sleep-disordered breathing. *Sleep and Breathing.* 2007;11(1):1-22.
23. Shen H-L, Wen Y-W, Chen N-H, Liao Y-F. Craniofacial morphologic predictors of oral appliance outcomes in patients with obstructive sleep apnea. *The Journal of the American Dental Association.* 2012;143(11):1209-17.
24. El-Solh AA, Moitheennazima B, Akinnusi ME, Churder PM, Lafornera AM. Combined oral appliance and positive airway pressure therapy for obstructive sleep apnea: a pilot study. *Sleep & breathing = Schlaf & Atmung.* 2011;15(2):203-8.

- 1
- 2
- 3
- 4 25. Isono S, Tanaka A, Tagaito Y, Sho Y, Nishino T. Pharyngeal patency in response to advancement
- 5 of the mandible in obese anesthetized persons. *The Journal of the American Society of*
- 6 *Anesthesiologists*. 1997;87(5):1055-62.
- 7 26. Bamagoos AA, Cistulli PA, Sutherland K, Ngiam J, Burke PGR, Bilston LE, et al. Dose-dependent
- 8 effects of mandibular advancement on upper airway collapsibility and muscle function in obstructive
- 9 sleep apnea. *Sleep*. 2019;42(6).
- 10 27. Barnes M, McEvoy RD, Banks S, Tarquinio N, Murray CG, Vowles N, et al. Efficacy of positive
- 11 airway pressure and oral appliance in mild to moderate obstructive sleep apnea. *American journal of*
- 12 *respiratory and critical care medicine*. 2004;170(6):656-64.
- 13 28. Kezirian EJ, Boudewyns A, Eisele DW, Schwartz AR, Smith PL, Van de Heyning PH, et al.
- 14 Electrical stimulation of the hypoglossal nerve in the treatment of obstructive sleep apnea. *Sleep*
- 15 *medicine reviews*. 2010;14(5):299-305.
- 16 29. Eastwood PR, Barnes M, Walsh JH, Maddison KJ, Hee G, Schwartz AR, et al. Treating
- 17 obstructive sleep apnea with hypoglossal nerve stimulation. *Sleep*. 2011;34(11):1479-86.
- 18 30. Fleury Curado T, Oliven A, Sennes LU, Polotsky VY, Eisele D, Schwartz AR. Neurostimulation
- 19 Treatment of OSA. *Chest*. 2018;154(6):1435-47.
- 20 31. Bamagoos AA, Cistulli PA, Sutherland K, Ngiam J, Burke PG, Bilston LE, et al. Dose-dependent
- 21 effects of mandibular advancement on upper airway collapsibility and muscle function in obstructive
- 22 sleep apnea. *Sleep*. 2019;42(6):zsz049.
- 23 32. Ramar K, Dort LC, Katz SG, Lettieri CJ, Harrod CG, Thomas SM, et al. Clinical Practice Guideline
- 24 for the Treatment of Obstructive Sleep Apnea and Snoring with Oral Appliance Therapy: An Update
- 25 for 2015. *Journal of clinical sleep medicine : JCSM : official publication of the American Academy of*
- 26 *Sleep Medicine*. 2015;11(7):773-827.
- 27 33. Nairn R, Shapiro N. *Prosthetic Dentistry Glossary*. London: Quintessence. 1995.
- 28 34. *Prosthodontics Ao. The glossary of prosthodontic terms*: Mosby; 1999.
- 29 35. Millman RP, Rosenberg CL, Kramer NR. Oral appliances in the treatment of snoring and sleep
- 30 apnea. *Clinics in chest medicine*. 1998;19(1):69-75.
- 31 36. Hoekema A, de Vries F, Heydenrijk K, Stegenga B. Implant-retained oral appliances: a novel
- 32 treatment for edentulous patients with obstructive sleep apnea-hypopnea syndrome. *Clinical oral*
- 33 *implants research*. 2007;18(3):383-7.
- 34 37. Gao X, Otsuka R, Ono T, Honda E, Sasaki T, Kuroda T. Effect of titrated mandibular
- 35 advancement and jaw opening on the upper airway in nonapneic men: a magnetic resonance imaging
- 36 and cephalometric study. *American journal of orthodontics and dentofacial orthopedics : official*
- 37 *publication of the American Association of Orthodontists, its constituent societies, and the American*
- 38 *Board of Orthodontics*. 2004;125(2):191-9.
- 39 38. Tsuiki S, Lowe AA, Almeida FR, Fleetham JA. Effects of an anteriorly titrated mandibular
- 40 position on awake airway and obstructive sleep apnea severity. *American journal of orthodontics and*
- 41 *dentofacial orthopedics : official publication of the American Association of Orthodontists, its*
- 42 *constituent societies, and the American Board of Orthodontics*. 2004;125(5):548-55.
- 43 39. Johal A, Battagel JM. An investigation into the changes in airway dimension and the efficacy
- 44 of mandibular advancement appliances in subjects with obstructive sleep apnoea. *Br J Orthod*.
- 45 *1999;26(3):205-10*.
- 46 40. Kazemeini E, Op de Beeck S, Vroegop A, Van Loo D, Willemen M, Verbraecken J, et al. A pilot
- 47 study on comparison of subjective titration versus remotely controlled mandibular positioning during
- 48 polysomnography and drug-induced sleep endoscopy, to determine the effective protrusive position
- 49 for mandibular advancement device therapy. *Sleep and Breathing*. 2022;26(4):1837-45.
- 50 41. Miyamoto K, Ozbek MM, Lowe AA, Sjöholm TT, Love LL, Fleetham JA, et al. Mandibular posture
- 51 during sleep in patients with obstructive sleep apnoea. *Arch Oral Biol*. 1999;44(8):657-64.
- 52 42. Kushida CA, Morgenthaler TI, Littner MR, Alessi CA, Bailey D, Coleman J, Jr., et al. Practice
- 53 parameters for the treatment of snoring and Obstructive Sleep Apnea with oral appliances: an update
- 54 for 2005. *Sleep*. 2006;29(2):240-3.
- 55
- 56
- 57
- 58
- 59
- 60



- 1
  - 2
  - 3
  - 4
  - 5
  - 6
  - 7
  - 8
  - 9
  - 10
  - 11
  - 12
  - 13
  - 14
  - 15
  - 16
  - 17
  - 18
  - 19
  - 20
  - 21
  - 22
  - 23
  - 24
  - 25
  - 26
  - 27
  - 28
  - 29
  - 30
  - 31
  - 32
  - 33
  - 34
  - 35
  - 36
  - 37
  - 38
  - 39
  - 40
  - 41
  - 42
  - 43
  - 44
  - 45
  - 46
  - 47
  - 48
  - 49
  - 50
  - 51
  - 52
  - 53
  - 54
  - 55
  - 56
  - 57
  - 58
  - 59
  - 60
43. Lowe AA, Sjöholm TT, Ryan CF, Fleetham JA, Ferguson KA, Remmers JE. Treatment, airway and compliance effects of a titratable oral appliance. *Sleep*. 2000;23 Suppl 4:S172-8.
44. Inoko Y, Yoshimura K, Kato C, Morita O, Kohno M. Efficacy and safety of temperature data loggers in measuring compliance with the use of oral appliances. *Sleep and Biological Rhythms*. 2009;7(3):188-92.
45. Dieltjens M, Braem MJ, Vroegop A, Wouters K, Verbraecken JA, De Backer WA, et al. Objectively measured vs self-reported compliance during oral appliance therapy for sleep-disordered breathing. *Chest*. 2013;144(5):1495-502.
46. Johal A, Jauhar P, Alqattan F, Kassim S, Cloughlin K. The Efficacy of Mandibular Advancement Appliances as a Treatment Alternative to Continuous Positive Airway Pressure in Moderate OSAHS Ama Johal, Preeti Jahaur, Fatemah Alqattan, Saba Kassim and Kieran Mc Cloughlin. *Journal of Sleep Disorders and management*. 2016.
47. Saglam-Aydinatay B, Taner T. Oral appliance therapy in obstructive sleep apnea: Long-term adherence and patients' experiences. *Medicina Oral Patologia Oral y Cirugia Bucal*. 2018;23(1):e72-e7.
48. Walker-Engstrom ML, Tegelberg A, Wilhelmsson B, Ringqvist I. 4-year follow-up of treatment with dental appliance or uvulopalatopharyngoplasty in patients with obstructive sleep apnea - A randomized study. 2002:739-46.
49. de Almeida FR, Lowe AA, Tsuiki S, Otsuka R, Wong M, Fastlicht S, et al. Long-Term Compliance and Side Effects of Oral Appliances Used for the Treatment of Snoring and Obstructive Sleep Apnea Syndrome. *Journal of Clinical Sleep Medicine*. 2005;1(2):143-52.
50. Vecchierini MF, Attali V, Collet JM, d'Ortho MP, Goutorbe F, Kerbrat JB, et al. Mandibular advancement device use in obstructive sleep apnea: ORCADES study 5-year follow-up data. *Journal of clinical sleep medicine : JCSM : official publication of the American Academy of Sleep Medicine*. 2021;17(8):1695-705.
51. Tallamraju H, Newton JT, Fleming PS, Johal A. Factors influencing adherence to oral appliance therapy in adults with obstructive sleep apnea: a systematic review and meta-analysis. *Journal of Clinical Sleep Medicine*. 2021;17(7):1485-98.
52. Dieltjens M, Braem MJ, Wouters K, Verbraecken JA, De Backer WA, Van De Heyning PH, et al. Determinants of objectively measured adherence to oral appliance therapy in patients with sleep-disordered breathing. *Sleep*. 2014;37:A150.
53. Nerfeldt P, Friberg D. Effectiveness of Oral Appliances in Obstructive Sleep Apnea with Respiratory Arousals. *Journal of clinical sleep medicine : JCSM : official publication of the American Academy of Sleep Medicine*. 2016;12(8):1159-65.
54. Attali V, Chaumereuil C, Arnulf I, Golmard JL, Tordjman F, Morin L, et al. Predictors of long-term effectiveness to mandibular repositioning device treatment in obstructive sleep apnea patients after 1000 days. *Sleep medicine*. 2016;27-28:107-14.
55. Pelletier-Fleury N. Socioeconomic aspects of sleep apnea syndrome. *Revue des maladies respiratoires*. 2006;23(HS2):7S11-7S3.
56. Vanderveken OM, Devolder A, Marklund M, Boudewyns AN, Braem MJ, Okkerse W, et al. Comparison of a custom-made and a thermoplastic oral appliance for the treatment of mild sleep apnea. *American journal of respiratory and critical care medicine*. 2008;178(2):197-202.
57. Gagnadoux F, Nguyen XL, Le Vaillant M, Priou P, Meslier N, Eberlein A, et al. Comparison of titratable thermoplastic versus custom-made mandibular advancement device for the treatment of obstructive sleep apnoea. 2017:35-42.
58. Quinnell TG, Pittman MA, Bennett M, Jordan J, Clutterbuck-James AL, East CL. TOMADO: a crossover randomised controlled trial of oral mandibular advancement devices for obstructive sleep apnoea-hypopnoea. *Thorax*. 2013;68:A4.
59. Johal A, Haria P, Manek S, Joury E, Riha R. Ready-Made Versus Custom-Made Mandibular Repositioning Devices in Sleep Apnea: A Randomized Clinical Trial. *Journal of Clinical Sleep Medicine*. 2017;13(2):175-82.

- 1  
2  
3  
4  
5  
6  
7  
8  
9  
10  
11  
12  
13  
14  
15  
16  
17  
18  
19  
20  
21  
22  
23  
24  
25  
26  
27  
28  
29  
30  
31  
32  
33  
34  
35  
36  
37  
38  
39  
40  
41  
42  
43  
44  
45  
46  
47  
48  
49  
50  
51  
52  
53  
54  
55  
56  
57  
58  
59  
60
60. Friedman M, Hamilton C, Samuelson CG, Kelley K, Pearson-Chauhan K, Taylor D, et al. Compliance and Efficacy of Titratable Thermoplastic versus Custom Mandibular Advancement Devices. *Otolaryngology-Head and Neck Surgery*. 2012;147(2):379-86.
61. Johal A, Agha B. Ready-made versus custom-made mandibular advancement appliances in obstructive sleep apnea: A systematic review and meta-analysis. *Journal of sleep research*. 2018;27(6):e12660.
62. Vanderveken OM, Dieltjens M, Wouters K, De Backer WA, Van de Heyning PH, Braem MJ. Objective measurement of compliance during oral appliance therapy for sleep-disordered breathing. *Thorax*. 2013;68(1):91-6.
63. McGown AD, Makker HK, Battagel JM, L'Estrange PR, Grant HR, Spiro SG. Long-term use of mandibular advancement splints for snoring and obstructive sleep apnoea: a questionnaire survey. *European Respiratory Journal*. 2001;17(3):462-6.
64. Makihara E, Kawano T, Miyajima R, Masumi S, Enciso R, Clark GT. Assessment of oral appliance for obstructive sleep apnea patients. *Clinical and experimental dental research*. 2016;2(2):155-61.
65. Chen H, Lowe AA. Updates in oral appliance therapy for snoring and obstructive sleep apnea. *Sleep & breathing = Schlaf & Atmung*. 2013;17(2):473-86.
66. Izci B, McDonald JP, Coleman EL, Mackay TW, Douglas NJ, Engleman HM. Clinical audit of subjects with snoring & sleep apnoea/hypopnoea syndrome fitted with mandibular repositioning splint. *Respiratory medicine*. 2005;99(3):337-46.
67. Gjerde K, Lehmann S, Bjorvatn B, Berge M, Thuen F, Berge T, et al. Partner perceptions are associated with objective sensor-measured adherence to oral appliance therapy in obstructive sleep apnea. *Journal of sleep research*. 2022;31(2):e13462.
68. Dieltjens M, Vanderveken OM, Van den Bosch D, Wouters K, Denollet J, Verbraecken JA, et al. Impact of type D personality on adherence to oral appliance therapy for sleep-disordered breathing. *Sleep & breathing = Schlaf & Atmung*. 2013;17(3):985-91.
69. Tegelberg A, Nohlert E, Bergman LE, Andrén A. Bed partners' and patients' experiences after treatment of obstructive sleep apnoea with an oral appliance. *Swedish dental journal*. 2012;36(1):35-44.
70. Liu J, Sheets V, Maerz R, Ni A, Magalang U, Ko CC, et al. A multifactorial intervention to increase adherence to oral appliance therapy with a titratable mandibular advancement device for obstructive sleep apnea: a randomized controlled trial. *Sleep & breathing = Schlaf & Atmung*. 2022.
71. Camañes-Gonzalvo S, Bellot-Arcís C, Marco-Pitarch R, Montiel-Company JM, García-Selva M, Agustín-Panadero R, et al. Comparison of the phenotypic characteristics between responders and non-responders to obstructive sleep apnea treatment using mandibular advancement devices in adult patients: Systematic review and meta-analysis. *Sleep medicine reviews*. 2022;64:101644.
72. Chen H, Eckert DJ, van der Stelt PF, Guo J, Ge S, Emami E, et al. Phenotypes of responders to mandibular advancement device therapy in obstructive sleep apnea patients: A systematic review and meta-analysis. *Sleep medicine reviews*. 2020;49:101229.
73. Haviv Y, Zini A, Almozni G, Keshet N, Sharav Y, Aframian DJ. Assessment of interfering factors in non-adherence to oral appliance therapy in severe sleep apnea. 2017:629-35.
74. Brown EC, Cheng S, McKenzie DK, Butler JE, Gandevia SC, Bilston LE. Tongue and Lateral Upper Airway Movement with Mandibular Advancement. *Sleep*. 2013;36(3):397-404.
75. Jugé L, Yeung J, Knapman FL, Burke PG, Lowth AB, Gan KZ, et al. Influence of mandibular advancement on tongue dilatory movement during wakefulness and how this is related to oral appliance therapy outcome for obstructive sleep apnea. *Sleep*. 2021;44(3):zsaa196.
76. Gjerde K, Lehmann S, Berge ME, Johansson AK, Johansson A. Oral appliance treatment in moderate and severe obstructive sleep apnoea patients non-adherent to CPAP. 2016:249-58.
77. Edwards BA, Andara C, Landry S, Sands SA, Joosten SA, Owens RL, et al. Upper-airway collapsibility and loop gain predict the response to oral appliance therapy in patients with obstructive sleep apnea. *American journal of respiratory and critical care medicine*. 2016;194(11):1413-22.

- 1
- 2
- 3
- 4 78. Hilbert J, Yaggi HK. Patient-centered care in obstructive sleep apnea: A vision for the future. *Sleep medicine reviews*. 2018;37:138-47.
- 5
- 6 79. Sutherland K, Cistulli PA. Oral Appliance Therapy for Obstructive Sleep Apnoea: State of the Art. *Journal of Clinical Medicine*. 2019;8(12):2121.
- 7
- 8 80. Toh ST, Phua CQ, Loh S. Holistic Management of Obstructive Sleep Apnea: Translating Academic Research to Patient Care. *Sleep medicine clinics*. 2019;14(1):1-11.
- 9
- 10 81. Sutherland K, Phillips CL, Cistulli PA, editors. *Efficacy versus Effectiveness in the Treatment of Obstructive Sleep Apnea: CPAP and Oral Appliances* 2015.
- 11
- 12 82. Yamamoto U, Nishizaka M, Tsuda H, Tsutsui H, Ando SI. Crossover comparison between CPAP and mandibular advancement device with adherence monitor about the effects on endothelial function, blood pressure and symptoms in patients with obstructive sleep apnea. *Heart Vessels*. 2019;34(10):1692-702.
- 13
- 14 83. Phillips CL, Grunstein RR, Darendeliler MA, Mihailidou AS, Srinivasan VK, Yee BJ, et al. Health outcomes of continuous positive airway pressure versus oral appliance treatment for obstructive sleep apnea: a randomized controlled trial. *American journal of respiratory and critical care medicine*. 2013;187(8):879-87.
- 15
- 16 84. de Vries GE, Hoekema A, Claessen J, Stellingsma C, Stegenga B, Kerstjens HAM, et al. Long-Term Objective Adherence to Mandibular Advancement Device Therapy Versus Continuous Positive Airway Pressure in Patients With Moderate Obstructive Sleep Apnea. *Journal of clinical sleep medicine : JCSM : official publication of the American Academy of Sleep Medicine*. 2019;15(11):1655-63.
- 17
- 18 85. Pattipati M, Gudavalli G, Zin M, Dhulipalla L, Kolack E, Karki M, et al. Continuous Positive Airway Pressure vs Mandibular Advancement Devices in the Treatment of Obstructive Sleep Apnea: An Updated Systematic Review and Meta-Analysis. *Cureus*. 2022;14(1):e21759.
- 19
- 20 86. Randerath W, Verbraecken J, de Raaff CAL, Hedner J, Herkenrath S, Hohenhorst W, et al. European Respiratory Society guideline on non-CPAP therapies for obstructive sleep apnoea. *European Respiratory Review*. 2021;30(162):210200.
- 21
- 22 87. Li P, Ning XH, Lin H, Zhang N, Gao YF, Ping F. Continuous positive airway pressure versus mandibular advancement device in the treatment of obstructive sleep apnea: a systematic review and meta-analysis. *Sleep medicine*. 2020;72:5-11.
- 23
- 24 88. Schwartz M, Acosta L, Hung YL, Padilla M, Enciso R. Effects of CPAP and mandibular advancement device treatment in obstructive sleep apnea patients: a systematic review and meta-analysis. *Sleep & breathing = Schlaf & Atmung*. 2018;22(3):555-68.
- 25
- 26 89. Sharples LD, Clutterbuck-James AL, Glover MJ, Bennett MS, Chadwick R, Pittman MA, et al. Meta-analysis of randomised controlled trials of oral mandibular advancement devices and continuous positive airway pressure for obstructive sleep apnoea-hypopnoea. *Sleep medicine reviews*. 2016;27:108-24.
- 27
- 28 90. Kuhn E, Schwarz EI, Bratton DJ, Rossi VA, Kohler M. Effects of CPAP and Mandibular Advancement Devices on Health-Related Quality of Life in OSA: A Systematic Review and Meta-analysis. *Chest*. 2017;151(4):786-94.
- 29
- 30 91. Bratton DJ, Gaisl T, Schlatzer C, Kohler M. Comparison of the effects of continuous positive airway pressure and mandibular advancement devices on sleepiness in patients with obstructive sleep apnoea: a network meta-analysis. *The Lancet Respiratory medicine*. 2015;3(11):869-78.
- 31
- 32 92. Uniken Venema JAM, Doff MHJ, Joffe-Sokolova D, Wijkstra PJ, van der Hoeven JH, Stegenga B, et al. Long-term obstructive sleep apnea therapy: a 10-year follow-up of mandibular advancement device and continuous positive airway pressure. *Journal of clinical sleep medicine : JCSM : official publication of the American Academy of Sleep Medicine*. 2020;16(3):353-9.
- 33
- 34 93. Grote L, Hedner J, Grunstein R, Kraiczi H. Therapy with nCPAP: incomplete elimination of Sleep Related Breathing Disorder. *The European respiratory journal*. 2000;16(5):921-7.
- 35
- 36 94. Vanderveken OM, Dieltjens M, Wouters K, De Backer WA, Van de Heyning PH, Braem MJ. Objective measurement of compliance during oral appliance therapy for sleep-disordered breathing. *Thorax*. 2013;68(1):91-6.
- 37
- 38
- 39
- 40
- 41
- 42
- 43
- 44
- 45
- 46
- 47
- 48
- 49
- 50
- 51
- 52
- 53
- 54
- 55
- 56
- 57
- 58
- 59
- 60

- 1
- 2
- 3
- 4 95. Ravesloot MJ, de Vries N. Reliable calculation of the efficacy of non-surgical and surgical
- 5 treatment of obstructive sleep apnea revisited. *Sleep*. 2011;34(1):105-10.
- 6 96. Dissanayake HU, Sutherland K, Phillips CL, Grunstein RR, Mihailidou AS, Cistulli PA.
- 7 Comparative effects of CPAP and mandibular advancement splint therapy on blood pressure variability
- 8 in moderate to severe obstructive sleep apnoea. *Sleep medicine*. 2021;80:294-300.
- 9 97. Ferguson KA, Cartwright R, Rogers R, Schmidt-Nowara W. Oral appliances for snoring and
- 10 obstructive sleep apnea: a review. *Sleep*. 2006;29(2):244-62.
- 11 98. Saletu A, Anderer P, Parapatics S, Matthai C, Matejka M, Saletu B. Effects of a mandibular
- 12 repositioning appliance on sleep structure, morning behavior and clinical symptomatology in patients
- 13 with snoring and sleep-disordered breathing. *Neuropsychobiology*. 2007;55(3-4):184-93.
- 14 99. Marklund M, Carlberg B, Forsgren L, Olsson T, Stenlund H, Franklin KA. Oral Appliance Therapy
- 15 in Patients With Daytime Sleepiness and Snoring or Mild to Moderate Sleep Apnea: A Randomized
- 16 Clinical Trial. *JAMA Intern Med*. 2015;175(8):1278-85.
- 17 100. Kazemeini E, Braem MJ, Moorkens G, Balina S, Kastoer C, Op de Beeck S, et al. Scoring of
- 18 Hypersomnolence and Fatigue in Patients With Obstructive Sleep Apnea Treated With a Titratable
- 19 Custom-Made Mandibular Advancement Device. *Journal of clinical sleep medicine : JCSM : official*
- 20 *publication of the American Academy of Sleep Medicine*. 2019;15(4):623-8.
- 21 101. Park JW, Mehta S, Fastlicht S, Lowe AA, Almeida FR. Changes in headache characteristics with
- 22 oral appliance treatment for obstructive sleep apnea. *Sci Rep*. 2021;11(1):2568.
- 23 102. Marin JM, Agusti A, Villar I, Forner M, Nieto D, Carrizo SJ, et al. Association between treated
- 24 and untreated obstructive sleep apnea and risk of hypertension. *Jama*. 2012;307(20):2169-76.
- 25 103. Hla KM, Young T, Hagen EW, Stein JH, Finn LA, Nieto FJ, et al. Coronary heart disease incidence
- 26 in sleep disordered breathing: the Wisconsin Sleep Cohort Study. *Sleep*. 2015;38(5):677-84.
- 27 104. Fletcher EC. The relationship between systemic hypertension and obstructive sleep apnea:
- 28 facts and theory. *Am J Med*. 1995;98(2):118-28.
- 29 105. Bratton DJ, Gaisl T, Wons AM, Kohler M. CPAP vs Mandibular Advancement Devices and Blood
- 30 Pressure in Patients With Obstructive Sleep Apnea: A Systematic Review and Meta-analysis. *Jama*.
- 31 2015;314(21):2280-93.
- 32 106. de Vries GE, Wijkstra PJ, Houwerzijl EJ, Kerstjens HAM, Hoekema A. Cardiovascular effects of
- 33 oral appliance therapy in obstructive sleep apnea: A systematic review and meta-analysis. *Sleep*
- 34 *medicine reviews*. 2018;40:55-68.
- 35 107. Pengo MF, Soranna D, Giontella A, Perger E, Mattaliano P, Schwarz EI, et al. Obstructive sleep
- 36 apnoea treatment and blood pressure: which phenotypes predict a response? A systematic review
- 37 and meta-analysis. *European Respiratory Journal*. 2020;55(5):1901945.
- 38 108. Whelton PK. Epidemiology of hypertension. *Lancet*. 1994;344(8915):101-6.
- 39 109. Sasaki N, Ozono R, Edahiro Y, Ishii K, Seto A, Okita T, et al. Impact of non-dipping on
- 40 cardiovascular outcomes in patients with obstructive sleep apnea syndrome. *Clinical and experimental*
- 41 *hypertension (New York, NY : 1993)*. 2015;37(6):449-53.
- 42 110. Sutherland K, Dissanayake HU, Trzepizur W, Gagnadoux F, Cistulli PA. Circadian blood pressure
- 43 profile and blood pressure changes following oral appliance therapy for obstructive sleep apnoea. *J*
- 44 *Hypertens*. 2021;39(11):2272-80.
- 45 111. Dal-Fabbro C, Garbuio S, D'Almeida V, Cintra FD, Tufik S, Bittencourt L. Mandibular
- 46 advancement device and CPAP upon cardiovascular parameters in OSA. *Sleep & breathing = Schlaf &*
- 47 *Atmung*. 2014;18(4):749-59.
- 48 112. Hoyos CM, Melehan KL, Liu PY, Grunstein RR, Phillips CL. Does obstructive sleep apnea cause
- 49 endothelial dysfunction? A critical review of the literature. *Sleep medicine reviews*. 2015;20:15-26.
- 50 113. Gagnadoux F, Pépin JL, Vielle B, Bironneau V, Chouet-Girard F, Launois S, et al. Impact of
- 51 Mandibular Advancement Therapy on Endothelial Function in Severe Obstructive Sleep Apnea. *American journal of respiratory and critical care medicine*. 2017;195(9):1244-52.
- 52 114. Guimarães TM, Poyares D, Oliveira ESL, Luz G, Coelho G, Dal Fabbro C, et al. The treatment of
- 53 mild OSA with CPAP or mandibular advancement device and the effect on blood pressure and
- 54
- 55
- 56
- 57
- 58
- 59
- 60

1  
2  
3 endothelial function after one year of treatment. *Journal of clinical sleep medicine : JCSM : official*  
4 *publication of the American Academy of Sleep Medicine.* 2021;17(2):149-58.

5 115. Anandam A, Patil M, Akinnusi M, Jaoude P, El-Solh AA. Cardiovascular mortality in obstructive  
6 sleep apnoea treated with continuous positive airway pressure or oral appliance: an observational  
7 study. *Respirology (Carlton, Vic).* 2013;18(8):1184-90.

8 116. Dieltjens M, Vanderveken OM, Shivalkar B, Van Haesendonck G, Kastoer C, Heidbuchel H, et  
9 al. Mandibular advancement device treatment and reverse left ventricular hypertrophic remodeling  
10 in patients with obstructive sleep apnea. *Journal of clinical sleep medicine : JCSM : official publication*  
11 *of the American Academy of Sleep Medicine.* 2022;18(3):903-9.

12 117. Badran M, Yassin BA, Fox N, Laher I, Ayas N. Epidemiology of Sleep Disturbances and  
13 Cardiovascular Consequences. *Can J Cardiol.* 2015;31(7):873-9.

14 118. Galic T, Bozic J, Ivkovic N, Gunjaca G, Ticinovic TK, Dogas Z. Effects of mandibular advancement  
15 device treatment on arterial stiffness and glucose metabolism in patients with mild to moderate  
16 obstructive sleep apnea: a prospective 1 year study. *Sleep & breathing = Schlaf & Atmung.*  
17 2016;20(1):69-77.

18 119. Recoquillon S, Pépin JL, Vielle B, Andriantsitohaina R, Bironneau V, Chouet-Girard F, et al.  
19 Effect of mandibular advancement therapy on inflammatory and metabolic biomarkers in patients  
20 with severe obstructive sleep apnoea: a randomised controlled trial. *Thorax.* 2019;74(5):496-9.

21 120. Lin CC, Wang HY, Chiu CH, Liaw SF. Effect of oral appliance on endothelial function in sleep  
22 apnea. *Clinical oral investigations.* 2015;19(2):437-44.

23 121. McEvoy RD, Antic NA, Heeley E, Luo Y, Ou Q, Zhang X, et al. CPAP for Prevention of  
24 Cardiovascular Events in Obstructive Sleep Apnea. *The New England journal of medicine.*  
25 2016;375(10):919-31.

26 122. Peker Y, Glantz H, Eulenburg C, Wegscheider K, Herlitz J, Thunström E. Effect of Positive Airway  
27 Pressure on Cardiovascular Outcomes in Coronary Artery Disease Patients with Nonsleepy Obstructive  
28 Sleep Apnea. The RICCADSA Randomized Controlled Trial. *American journal of respiratory and critical*  
29 *care medicine.* 2016;194(5):613-20.

30 123. Laratta CR, Ayas NT, Povitz M, Pendharkar SR. Diagnosis and treatment of obstructive sleep  
31 apnea in adults. *Cmaj.* 2017;189(48):E1481-e8.

32 124. Patil SP, Ayappa IA, Caples SM, Kimoff RJ, Patel SR, Harrod CG. Treatment of Adult Obstructive  
33 Sleep Apnea With Positive Airway Pressure: An American Academy of Sleep Medicine Systematic  
34 Review, Meta-Analysis, and GRADE Assessment. *Journal of clinical sleep medicine : JCSM : official*  
35 *publication of the American Academy of Sleep Medicine.* 2019;15(2):301-34.

36 125. Dissanayake HU, Colpani JT, Sutherland K, Loke W, Mohammadieh A, Ou YH, et al. Obstructive  
37 sleep apnea therapy for cardiovascular risk reduction-Time for a rethink? *Clinical cardiology.*  
38 2021;44(12):1729-38.

39 126. Dieltjens M, Verbruggen AE, Braem MJ, Wouters K, Verbraecken JA, De Backer WA, et al.  
40 Determinants of Objective Compliance During Oral Appliance Therapy in Patients With Sleep-  
41 Disordered Breathing: A Prospective Clinical Trial. *JAMA otolaryngology-- head & neck surgery.*  
42 2015;141(10):894-900.

43 127. Araie T, Okuno K, Ono Minagi H, Sakai T. Dental and skeletal changes associated with long-  
44 term oral appliance use for obstructive sleep apnea: A systematic review and meta-analysis. *Sleep*  
45 *medicine reviews.* 2018;41:161-72.

46 128. Karadeniz C, Lee KWC, Lindsay D, Karadeniz EI, Flores-Mir C. Oral appliance-generated  
47 malocclusion traits during the long-term management of obstructive sleep apnea in adults. *The Angle*  
48 *orthodontist.* 2022;92(2):255-64.

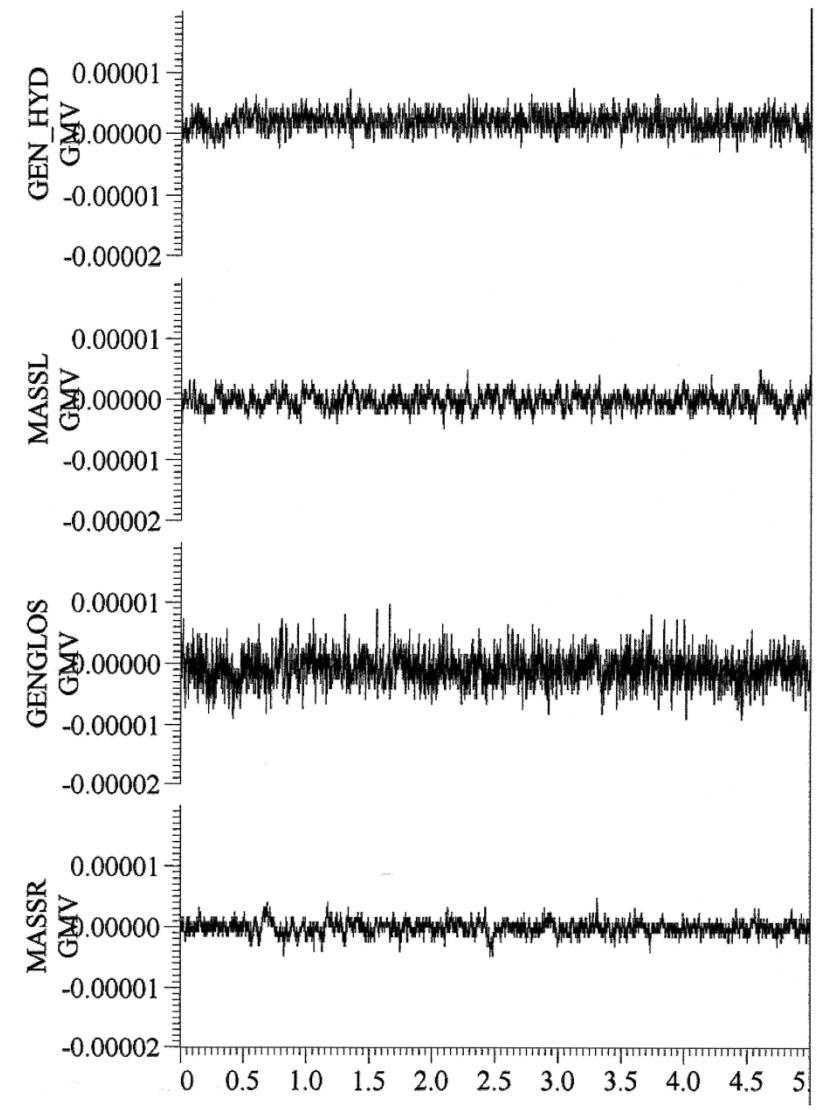
49 129. Pliska BT, Nam H, Chen H, Lowe AA, Almeida FR. Obstructive sleep apnea and mandibular  
50 advancement splints: occlusal effects and progression of changes associated with a decade of  
51 treatment. *Journal of clinical sleep medicine : JCSM : official publication of the American Academy of*  
52 *Sleep Medicine.* 2014;10(12):1285-91.  
53  
54  
55  
56  
57  
58  
59  
60

- 1  
2  
3 130. Hamoda MM, Almeida FR, Pliska BT. Long-term side effects of sleep apnea treatment with oral  
4 appliances: nature, magnitude and predictors of long-term changes. *Sleep medicine*. 2019;56:184-91.  
5 131. Heda P, Alalola B, Almeida FR, Kim H, Peres BU, Pliska BT. Long-term periodontal changes  
6 associated with oral appliance treatment of obstructive sleep apnea. *Journal of clinical sleep medicine*  
7 : JCSM : official publication of the American Academy of Sleep Medicine. 2021;17(10):2067-74.  
8 132. Marklund M. Predictors of long-term orthodontic side effects from mandibular advancement  
9 devices in patients with snoring and obstructive sleep apnea. *American journal of orthodontics and*  
10 *dentofacial orthopedics* : official publication of the American Association of Orthodontists, its  
11 constituent societies, and the American Board of Orthodontics. 2006;129(2):214-21.  
12 133. Minagi HO, Okuno K, Nohara K, Sakai T. Predictors of Side Effects With Long-Term Oral  
13 Appliance Therapy for Obstructive Sleep Apnea. *Journal of clinical sleep medicine* : JCSM : official  
14 publication of the American Academy of Sleep Medicine. 2018;14(1):119-25.  
15 134. Venema JAMU, Stellingsma C, Doff MHJ, Hoekema A. Dental Side Effects of Long-Term  
16 Obstructive Sleep Apnea Therapy: A Comparison of Three Therapeutic Modalities. *Journal of dental*  
17 *sleep medicine*. 2018;Apr 10;5(2):39-46. .  
18 135. Vena D, Azarbarzin A, Marques M, Op de Beeck S, Vanderveken OM, Edwards BA, et al.  
19 Predicting sleep apnea responses to oral appliance therapy using polysomnographic airflow. *Sleep*.  
20 2020;43(7).  
21 136. Vena D, Taranto-Montemurro L, Azarbarzin A, Op de Beeck S, Marques M, Vanderveken OM,  
22 et al. Clinical polysomnographic methods for estimating pharyngeal collapsibility in obstructive sleep  
23 apnea. *Sleep*. 2022;45(6).  
24 137. Bamagoos AA, Cistulli PA, Sutherland K, Madronio M, Eckert DJ, Hess L, et al.  
25 Polysomnographic Endotyping to Select Patients with Obstructive Sleep Apnea for Oral Appliances.  
26 *Ann Am Thorac Soc*. 2019;16(11):1422-31.  
27 138. Van den Bossche K, Op de Beeck S, Dieltjens M, Verbruggen AE, Vroegop AV, Verbraecken JA,  
28 et al. Multimodal phenotypic labelling using drug-induced sleep endoscopy, awake nasendoscopy and  
29 computational fluid dynamics for the prediction of mandibular advancement device treatment  
30 outcome: a prospective study. *J Sleep Res*. 2022:e13673.  
31 139. Randerath WJ, Herkenrath S, Treml M, Grote L, Hedner J, Bonsignore MR, et al. Evaluation of  
32 a multicomponent grading system for obstructive sleep apnoea: the Baveno classification. *ERJ Open*  
33 *Res*. 2021;7(1).  
34 140. Malhotra A, Ayappa I, Ayas N, Collop N, Kirsch D, McArdle N, et al. Metrics of sleep apnea  
35 severity: beyond the apnea-hypopnea index. *Sleep*. 2021;44(7).  
36 141. Kazemeini E, Op de Beeck S, Vroegop A, Van Loo D, Willemen M, Verbraecken J, et al. A pilot  
37 study on comparison of subjective titration versus remotely controlled mandibular positioning during  
38 polysomnography and drug-induced sleep endoscopy, to determine the effective protrusive position  
39 for mandibular advancement device therapy. *Sleep Breath*. 2022.  
40 142. Mosca EV, Bruehlmann S, Zouboules SM, Chiew AE, Westersund C, Hambrook DA, et al. In-  
41 home mandibular repositioning during sleep using MATRx plus predicts outcome and efficacious  
42 positioning for oral appliance treatment of obstructive sleep apnea. *J Clin Sleep Med*. 2022;18(3):911-  
43 9.  
44 143. Garcia M, Cabrera JA, Bataller A, Vila J, Mayoral P. Mandibular movement analysis by means  
45 of a kinematic model applied to the design of oral appliances for the treatment of obstructive sleep  
46 apnea. *Sleep Med*. 2020;73:29-37.  
47 144. Dieltjens M, Vroegop AV, Verbruggen AE, Wouters K, Willemen M, De Backer WA, et al. A  
48 promising concept of combination therapy for positional obstructive sleep apnea. *Sleep Breath*.  
49 2015;19(2):637-44.  
50 145. Delijaj FL, G.; Lindberg, E.; Wang, E. Reduced Apnea-Hypopnea Index in Patients with Severe  
51 Sleep Apnea Syndrome as Determined by Cervical Collar and Mandibular Advancement Device  
52 Combination Therapy. *Journal of Sleep Disorders & Therapy*. 2016;5(5).  
53  
54  
55  
56  
57  
58  
59  
60

1  
2  
3 146. Randerath W, de Lange J, Hedner J, Ho J, Marklund M, Schiza S, et al. Current and novel  
4 treatment options for obstructive sleep apnoea. ERJ Open Res. 2022;8(2).  
5  
6  
7  
8  
9  
10  
11  
12  
13  
14  
15  
16  
17  
18  
19  
20  
21  
22  
23  
24  
25  
26  
27  
28  
29  
30  
31  
32  
33  
34  
35  
36  
37  
38  
39  
40  
41  
42  
43  
44  
45  
46  
47  
48  
49  
50  
51  
52  
53  
54  
55  
56  
57  
58  
59  
60

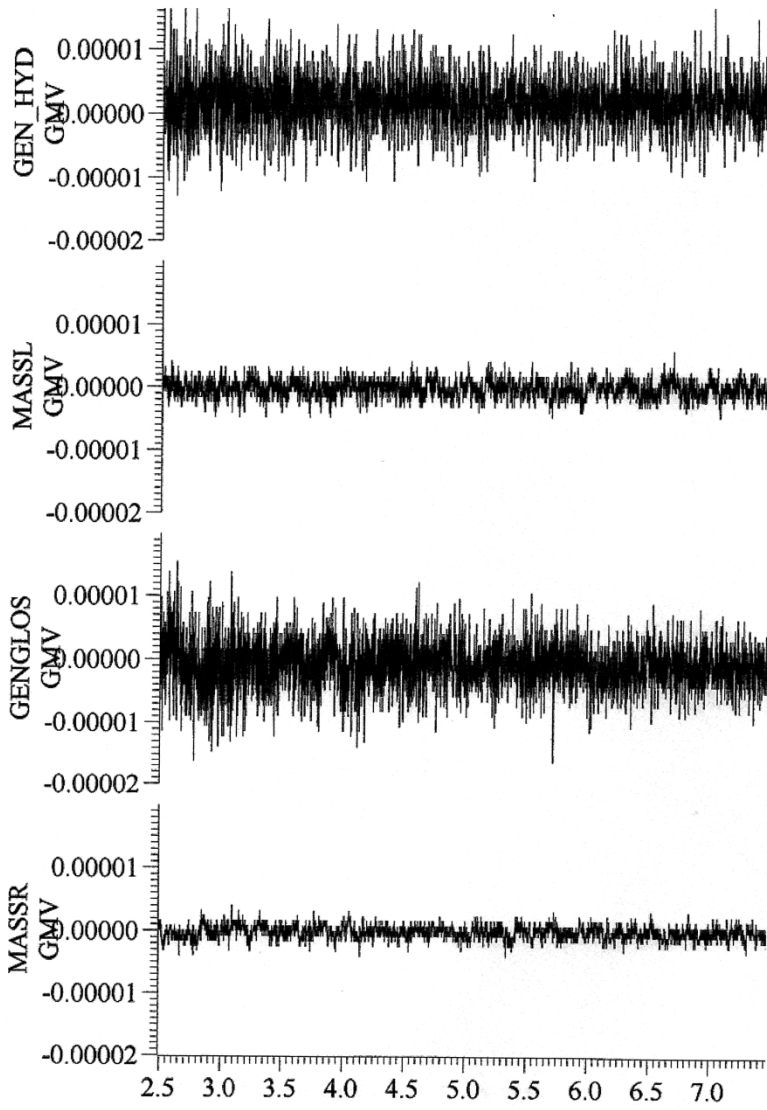
For Review Only - ERR

1  
2  
3  
4  
5  
6  
7  
8  
9  
10  
11  
12  
13  
14  
15  
16  
17  
18  
19  
20  
21  
22  
23  
24  
25  
26  
27  
28  
29  
30  
31  
32  
33  
34  
35  
36  
37  
38  
39  
40  
41  
42  
43  
44  
45  
46  
47  
48  
49  
50  
51  
52  
53  
54  
55  
56  
57  
58  
59  
60



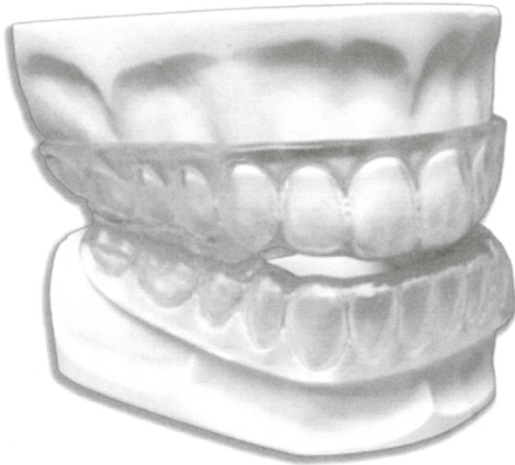
534x755mm (118 x 118 DPI)





534x755mm (118 x 118 DPI)

1  
2  
3  
4  
5  
6  
7  
8  
9  
10  
11  
12  
13  
14  
15  
16  
17  
18  
19  
20  
21  
22  
23  
24  
25  
26  
27  
28  
29  
30  
31  
32  
33  
34  
35  
36  
37  
38  
39  
40  
41  
42  
43  
44  
45  
46  
47  
48  
49  
50  
51  
52  
53  
54  
55  
56  
57  
58  
59  
60



755x534mm (118 x 118 DPI)

1  
2  
3  
4  
5  
6  
7  
8  
9  
10  
11  
12  
13  
14  
15  
16  
17  
18  
19  
20  
21  
22  
23  
24  
25  
26  
27  
28  
29  
30  
31  
32  
33  
34  
35  
36  
37  
38  
39  
40  
41  
42  
43  
44  
45  
46  
47  
48  
49  
50  
51  
52  
53  
54  
55  
56  
57  
58  
59  
60



84x56mm (300 x 300 DPI)

1  
2  
3  
4  
5  
6  
7  
8  
9  
10  
11  
12  
13  
14  
15  
16  
17  
18  
19  
20  
21  
22  
23  
24  
25  
26  
27  
28  
29  
30  
31  
32  
33  
34  
35  
36  
37  
38  
39  
40  
41  
42  
43  
44  
45  
46  
47  
48  
49  
50  
51  
52  
53  
54  
55  
56  
57  
58  
59  
60



84x56mm (300 x 300 DPI)