

---

# Image-based cardiac diagnosis with machine learning: A review

**Carlos Martin-Isla<sup>1</sup>, Victor M. Campello<sup>1</sup>, Cristian Izquierdo<sup>1</sup>, Zahra Raisi-Estabragh<sup>2,3</sup>, Bettina Baeßler<sup>4</sup>, Steffen E. Petersen<sup>2,3</sup> and Karim Lekadir\*<sup>1</sup>**

<sup>1</sup>*Departament de Matemàtiques & Informàtica, Universitat de Barcelona, Spain*

<sup>2</sup>*Barts Heart Centre, Barts Health NHS Trust, London, United Kingdom*

<sup>3</sup>*William Harvey Research Institute, Queen Mary University of London, United Kingdom*

<sup>4</sup>*Department of Diagnostic & Interventional Radiology, University Hospital Zurich, Switzerland*

Correspondence\*:

Carlos Martin-Isla

carlos.martinisla@ub.edu

## ABSTRACT

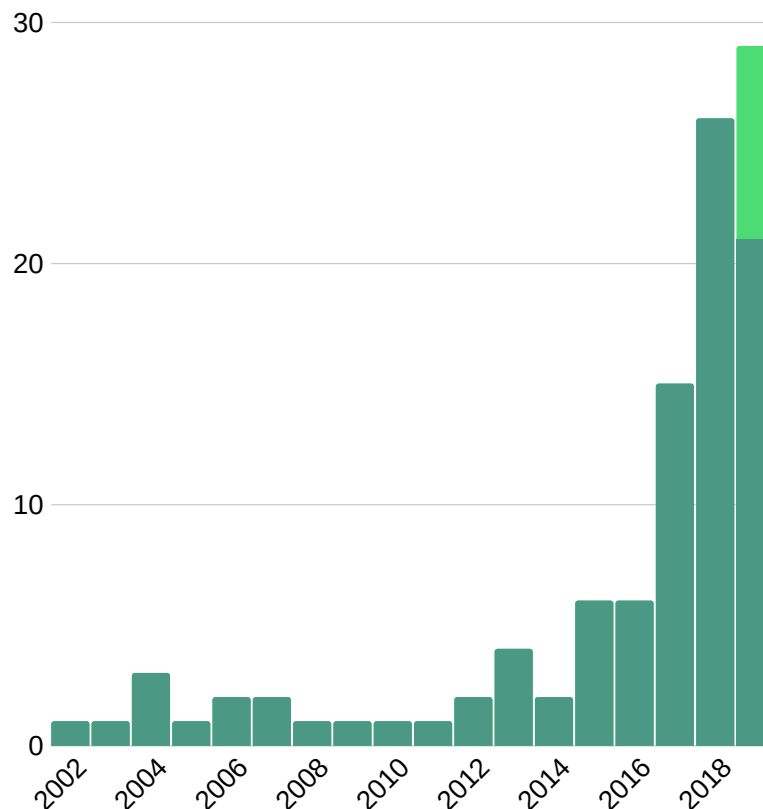
Cardiac imaging plays an important role in the diagnosis of cardiovascular disease (CVD). Until now, its role has been limited to visual and quantitative assessment of cardiac structure and function. However, with the advent of big data and machine learning, new opportunities are emerging to build artificial intelligence tools that will directly assist the clinician in the diagnosis of CVDs. This paper presents a thorough review of recent works in this field and provide the reader with a detailed presentation of the machine learning methods that can be further exploited to enable more automated, precise and early diagnosis of most CVDs.

**Keywords:** Cardiovascular disease, automated diagnosis, cardiac imaging, artificial intelligence, machine learning, deep learning, radiomics.

## 1 INTRODUCTION

Despite significant advances in diagnosis and treatment, cardiovascular disease (CVD) remains the most common cause of morbidity and mortality worldwide, accounting for approximately one third of annual deaths (Wilkins et al., 2017; Ritchie and Roser, 2018). Early and accurate diagnosis is key to improving CVD outcomes. Cardiovascular imaging has a pivotal role in diagnostic decision making. Current image analysis techniques are mostly reliant on qualitative visual assessment of images and crude quantitative measures of cardiac structure and function. In order to optimise the diagnostic value of cardiac imaging, there is need for more advanced image analysis techniques that allow deeper quantification of imaging phenotypes. In recent years, the development of big data and availability of high computational power have driven exponential advancement of artificial intelligence (AI) technologies in medical imaging (Figure 1). Machine learning (ML) approaches to image-based diagnosis rely on algorithms/models that *learn* from past clinical examples through identification of hidden and complex imaging patterns. Existing work already demonstrates the incremental value of image-based cardiovascular diagnosis with ML for a number of important conditions such as coronary artery disease (CAD) and heart failure (HF). The superior diagnostic performance of AI image analysis has the potential to substantially alleviate the burden of cardiovascular disease through facilitation of faster and more accurate diagnostic decision making.

In this paper we describe the main ML techniques and the procedures required to successfully design, implement, and validate new ML tools for image-based diagnosis. We also present a comprehensive review of existing literature pertaining to applications of ML for image-based diagnosis of CVD.

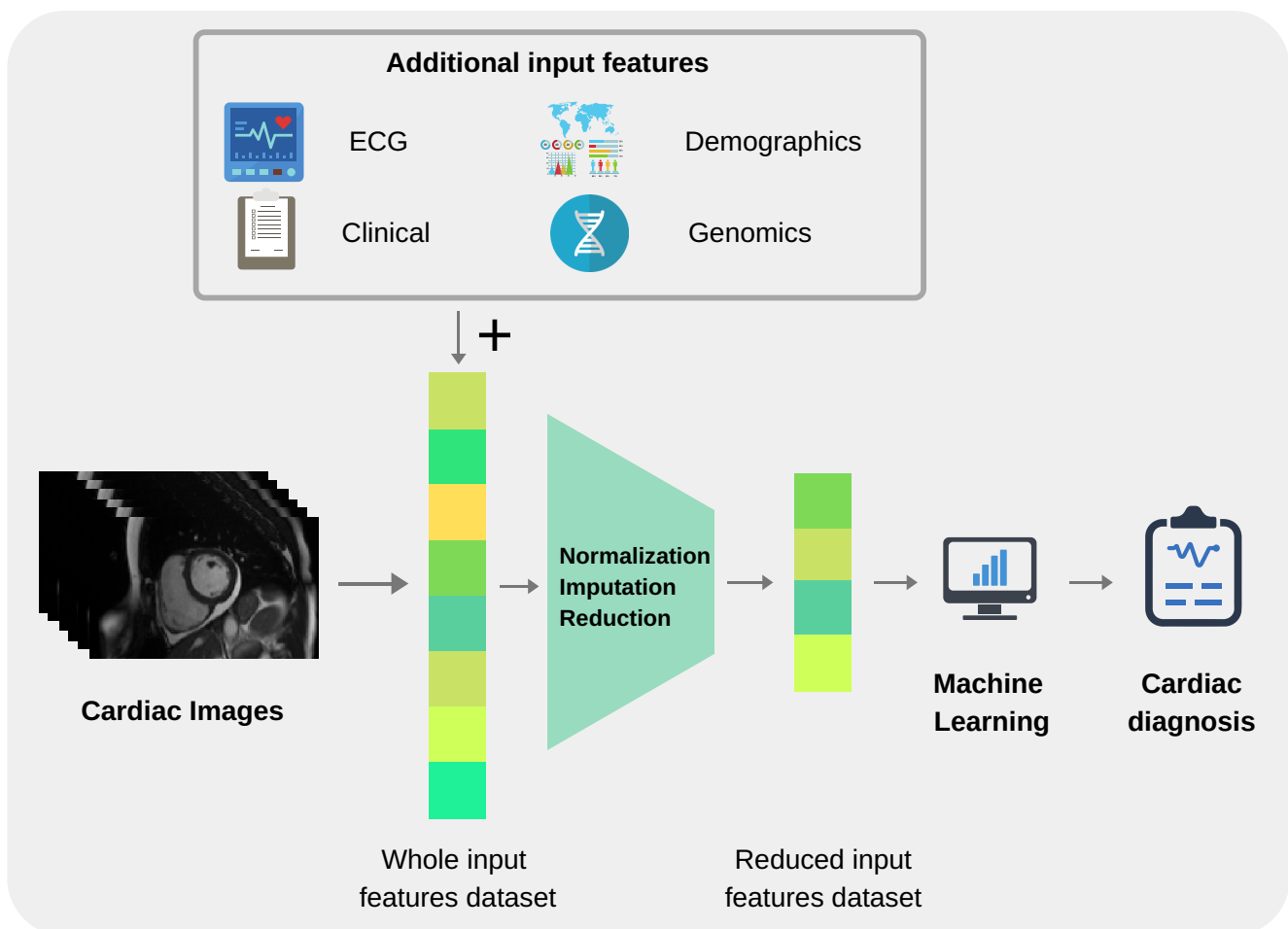


**Figure 1. Number of publications on machine learning and cardiac imaging per year.** This suggests an upward trend for future research. Light green bar represents the expected number of publications to be published late 2019.

## 2 OVERVIEW OF PIPELINE FOR IMAGE-BASED MACHINE LEARNING DIAGNOSIS

The overall pipeline to build ML tools for image-based cardiac diagnosis is schematically described in the following section. In short, it requires (1) input imaging datasets from which suitable imaging predictors can be extracted, (2) accurate output diagnosis labels, and (3) a suitable ML technique that is typically chosen and optimised depending on the application to predict the cardiac diagnosis (output) based on the imaging predictors (input). Additional non-imaging predictors (*e.g.* electrocardiogram data, genetic data, sex or age) are often integrated into the ML model and typically improve model performance.

In this section, we will first discuss the input and output variables in more detail, before introducing common used ML techniques and their applications.



**Figure 2. Pipeline for building image-based machine learning models.**

### 2.1 Data, input and output variables

#### 2.1.1 Sources of cardiovascular imaging data

Robust ML models are reliant on the availability of sufficient and accurate data. Thus, data preparation is an important pre-requisite to derive that perform well on internal and external validation. Within cardiac imaging, there is increasing availability of quality sources of organised big data through various biobanks,

**Table 1.** Selection of cardiac imaging datasets available.

Name	Country	Modality	Size	Year
Framingham Heart Study	USA	echo / MRI / CT	> 5,000	1948
Study of Health in Pomerania	DE	MRI	> 8,000	1997
The Tromso Study	NO	echo	3,287	1999
Multi-Ethnic Study of Atherosclerosis	USA	MRI	2,450	2000
UK Biobank	UK	MRI	20,000	2006
HUNT Study	NO	echo	1,296	2006
Defibrillators to Reduce Risk by MRI Evaluation	USA	MRI	450	2007
Barts BioResource	UK	echo / MRI	> 10,000	2007
European CMR Registry	EU	MRI	> 27,000	2007
NEO Study	NL	MRI	1,205	2008
SunnyBrook Cardiac Data	USA	MRI	45	2009
Registry of Fast Myocardial Perfusion Imaging with next gen SPECT	USA	SPECT	> 20,400	2009
The German National Cohort	DE	MRI	20,000	2011
Maastricht Study	NL	echo / CT	3,451	2012
Canadian Alliance for Healthy Hearts and Minds	CA	MRI	9,700	2013
Challenge on Endocardial 3D Ultrasound Segmentation	FR	echo	45	2014
Hamburg City Health Study	DE	MRI	> 45,000	2016
Automated Cardiac Diagnosis Challenge Dataset	FR	MRI	150	2017
Cardiac Acquisitions for Multi-structure Ultrasound Segmentation	FR	echo	500	2019

**Table 2.** Selection of cardiac structural and functional analysis softwares.

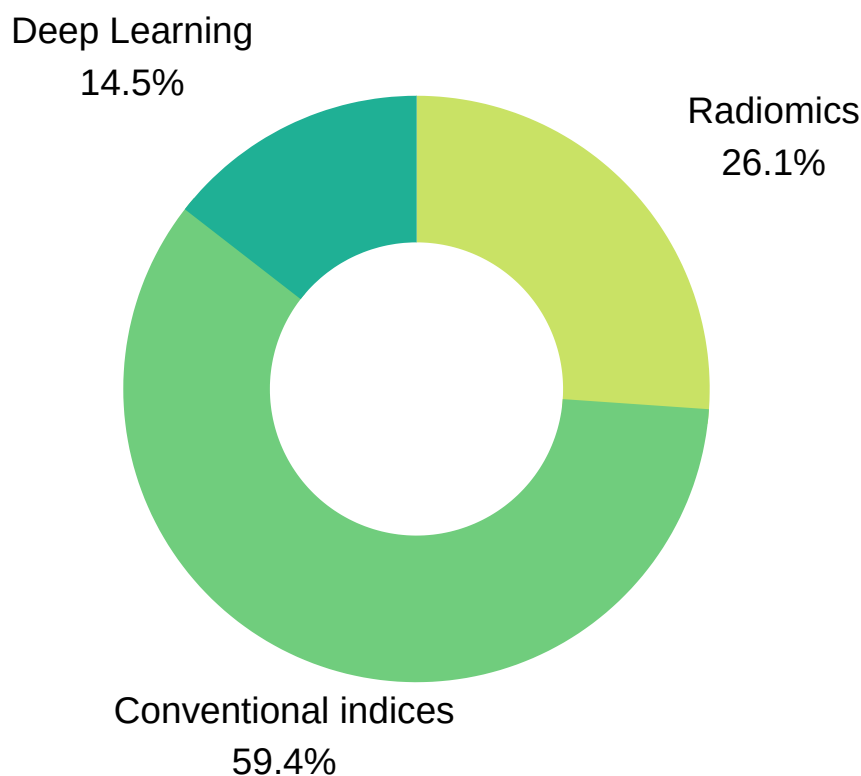
Name	Producer	Modality
CMRtools	Cardiovascular Imaging Solutions	MRI
suiteHEART	NeoSoft	MRI
CVI42	Circle Cardiovascular Imaging	MRI / CT
Medis Suite	Medis	MRI / CT
iNtuition	Terarecon	MRI / CT
Segment	Medviso	MRI / CT / SPECT
syngo.via	Siemens	MRI / CT / SPECT
IntelliSpace Portal	Philips	MRI / CT / echo
VevoLAB	Visualsonics	echo
QLAB	Philips	echo
TOMTEC	Philips	echo

bioresources, and registries. Available cohorts can be classified into population-based and clinical cohorts. Population cohorts such as the UK Biobank follow the health status of a representative sample of individuals from the general population and thus are particularly useful for risk stratification. In contrast, clinical cohorts, such as the Barts BioResource or the European cardiovascular magnetic resonance (EuroCMR) registry, are composed of clinical imaging from patients and therefore more suitable for building diagnostic tools. These datasets are an invaluable resource for the development and validation of ML diagnostic models.

### 2.1.2 Input variables

Before an ML model can be built for image-based diagnosis estimation, it is necessary to suitably define the imaging inputs. Imaging inputs may be the raw imaging data (*i.e.* pixel intensities), conventional cardiac

indices (and other transformed quantitative image parameters) or radiomics features extracted from the image.



**Figure 3. Input variables type distribution in reviewed literature.** As seen in the pie chart, conventional indices are the predominant features for training ML models, followed by radiomics and deep learning techniques.

### ***Conventional imaging indices***

Conventional imaging indices include measures commonly used in routine clinical image analysis such as ventricular volumes in end diastole/systole and ventricular ejection fractions.

Estimation of these clinical indices requires prior contouring of the endocardial and epicardial boundaries of the relevant cardiac chambers. Deep learning approaches have been used to develop automated/semi-automated contouring tools for more efficient and reproducible segmentation of cardiac chambers.

Since manual delineation of these boundaries is tedious and subject to errors, many automatic or semi-automatic tools have been developed (see Table 2 for examples of existing tools). Note that recently, many deep learning (DL) based approaches have been published for accurate and robust segmentation of the cardiac boundaries with promising results, however this is beyond the scope of this review (more details on this, as well as a basic introduction to ML, in cardiac magnetic resonance imaging (MRI) can be found in recent work by Leiner et al. (2019)).

Some recent works will be listed to illustrate the use of conventional imaging indices as inputs for ML-based diagnosis models. In Khened et al. (2017), an artificial neural network (ANN) was built to automatically diagnose several cardiac diseases such as hypertrophic cardiomyopathy (HCM), myocardial

infarction (MI) and abnormal RV (ARV), by using as input LV and RV ejection fraction, RV and LV volume end-systole and end-diastole, myocardial mass, as well as the patient's height and weight. In Chen et al. (2019), the authors integrated a set of 32 variables from clinical data, including ejection fraction, blood pressure, sex, age, as well as other conventional risk factors, to diagnose dilated cardiomyopathy (DCM). Juarez-Orozco et al. (2018) merged ejection fractions at rest and stress with a pool of clinical parameters to predict ischemia and adverse cardiovascular events using ML.

Regarding motion, strain and single intensity analysis, in Mantilla et al. (2013), global spatio-temporal image features are extracted to feed a support vector machine (SVM) classifier for LV wall motion assessment. Pairwise single intensity and variance regional differences in SPECT perfusion studies mimics the clinical procedure of qualitatively comparing stress and rest images in Bagher-Ebadian et al. (2004). Contractility differences and multiscale wall motion assessment are performed by means of apparent flow in Moreno et al. (2019) and Zheng et al. (2019) where each feature describes an oriented velocity at a given position along the cardiac ROI.

### **Radiomics features**

Radiomics analysis is the process of converting digital images to minable data. Analysis of the data through application of various statistical and mathematical processes allows quantification of various shape and textural characteristics of the image, referred to as radiomics features (Table 3). Radiomics analysis quantifies more advanced and complex characteristics of the cardiac chambers than is visually perceptible. Similarly to clinical imaging indices, radiomics requires the delineation of the cardiac structures before the features can be extracted.

Introduced in 2012 (Lambin et al., 2012; Kumar et al., 2012), the radiomics paradigm was, for a long time, mostly exploited in oncology (Aerts et al., 2014). Recently, a number of works have shown the promise of radiomics combined with ML for image-aided diagnosis of CVD. For instance, Cetin et al. (2017) demonstrated that about 10 radiomics features integrated within an ML model are sufficient to discriminate between several major CVDs. More recently, researchers at Harvard University, Neisius et al. (2019a) have built an ML model with 6 radiomic features calculated from T1 mapping sequences to differentiate between hypertensive heart disease (HHD) and HCM.

### **Raw imaging data**

Whole raw images may also be used as the input for the ML model, without any pre-processing or calculation of hand-crafted input imaging features. About 10% of published reports rely on this type of modelling. In this case, the optimal features for predicting the cardiac diagnoses are self-learned automatically by the ML techniques based on the training sample, as opposed to *a priori* definition by the AI scientist.

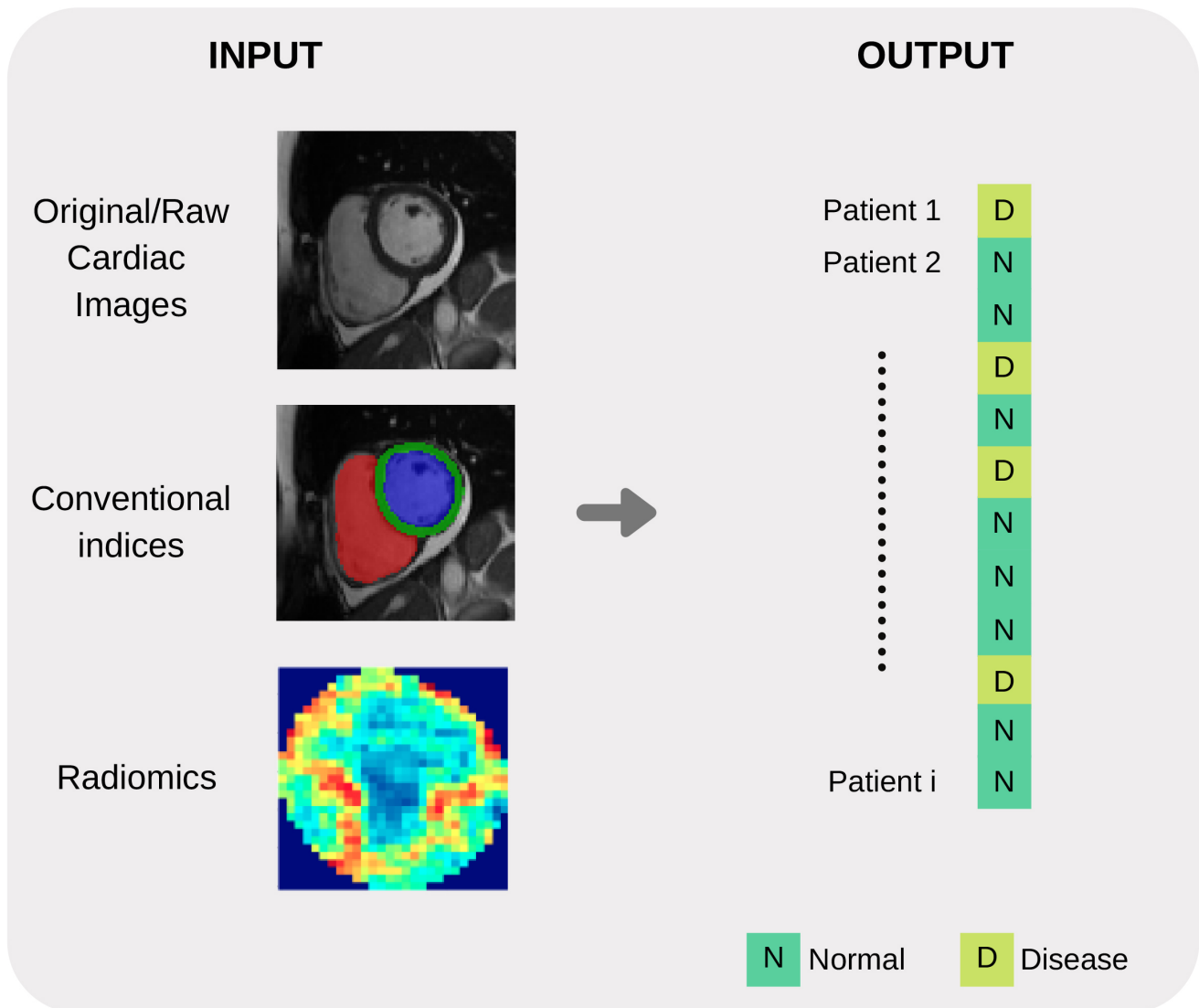
For illustration, it is worth mentioning the work by Betancur et al. (2019), an end-to-end DL model, estimating per-vessel CAD probability without any assumed subdivision of the input coronary territories from imaging data. The authors in Wolterink et al. (2016) built a coronary artery calcification (CAC) detector, also based on DL trained on raw CT images. A similar DL model directly built from raw echo images was demonstrated in Lu et al. (2018) to identify dilated cardiomyopathy cases. Also from raw echo images, the authors in Kusunose et al. (2019) built a DL model for automatic detection of regional wall motion abnormalities.

**Table 3.** Radiomics features overview.

Type	Description	Examples
Shape features	Describe geometric characteristics of the cardiac structures	Volume, surface area, sphericity, diameters, axis, surface to volume ratio, flatness
Intensity (First order)	Statistics on the intensity distributions within the region of interest (ROI)	Mean intensity, range, skewness (asymmetry) and entropy
Texture GLCM (Second order)	Quantifies the spatial relationship of the pixels in the ROI	Contrast, correlation
Texture GLSZM (Higher order)	Quantifies the number of connected voxels that share the same intensity level	Gray level non-uniformity, zone entropy
Texture GLRLM (Higher order)	Quantifies the gray level runs in the ROI	Run entropy, long run emphasis and short run emphasis
Texture NGTDM (Higher order)	Quantifies the difference between a gray value and the average gray value of its neighbors within a predefined distance	Busyness , strength
Texture GLDM (Higher order)	Quantifies the gray level dependencies in the ROI	Dependence non- uniformity, dependence entropy and dependence variance
Fractal dimension	Determines the ratio of change in detail to the change in scale	

### 2.1.3 Output

ML algorithms may be developed using supervised or unsupervised learning methods. Supervised learning requires accurately labelled training examples. In the simplest form, the output is a binary variable which takes a value of 1 for a diseased individual and 0 for a control healthy subject. To obtain a robust ML model, it is recommended to use a balanced training sample, comprising a similar number of healthy and diseased subjects. Note that the binary classification can be easily extended to the multi-class case if several diseases or stages of disease are to be included in the ML model. Thus, supervised learning algorithms link the input variables to labelled outputs. Unsupervised learning is the training of algorithms without definition of the output. Through this technique, the ML algorithm groups the sample through recognition of inherent patterns within the data. In general, supervised learning outperforms unsupervised learning and so is the preferred method in situations where the ground truth is known. However, unsupervised learning has unique value for discovery of novel disease sub-types and patient stratification *e.g.* different pheno-groups of hypertensive heart disease or CAD.



**Figure 4. Summary of common input and output variables for image-based diagnosis ML algorithms.** Different cardiac imaging input features such as raw data, conventional indices extracted from a ROI or radiomics (delineation of cardiac anatomy is required for the last two cases) and desired output. Both structures shape the most basic requirement for a ML cardiac imaging application, data.

## 2.2 Machine Learning Techniques

ML, refers to the use of computer algorithms that have the capacity to learn to perform given tasks from example data without the need for explicitly programmed instructions, *i.e.* image-based cardiac diagnosis in our case. This field of AI uses advanced statistical techniques to extract predictive or discriminatory patterns from the training data in order to perform the most accurate predictions on new data. We present the most commonly used ML techniques in the field of cardiac imaging and diagnosis for a non-expert audience and discuss their benefits and drawbacks. A list of diagnostic applications for each method will be provided as examples.



### 2.2.1 Logistic Regression

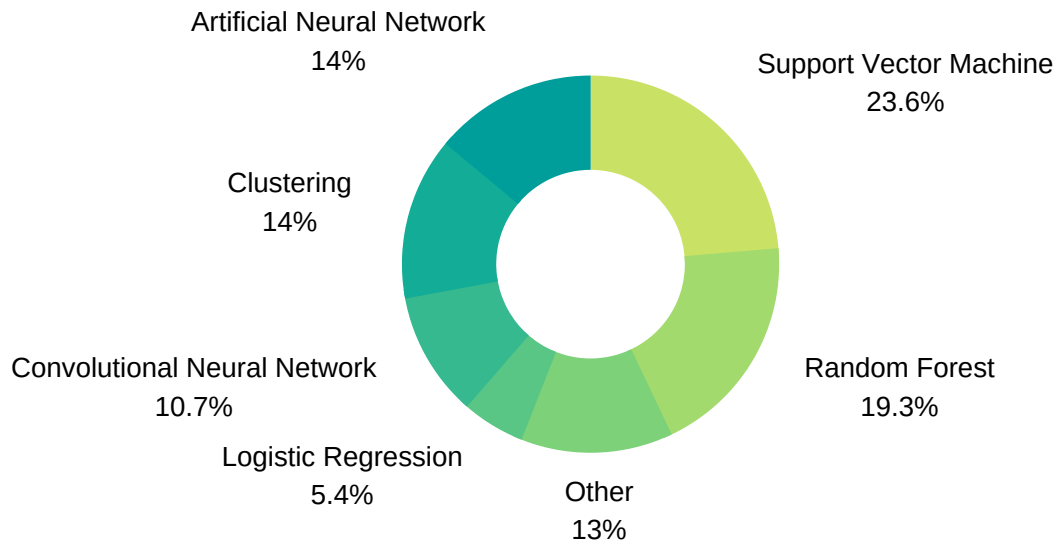
A Logistic Regression (LR) model is used to estimate the probability of a given output based on input variables in a continuous fashion, in contrast with a binary classifier. Final probabilities add up to one, so one obtains a stratification into all possible outcomes and the odds for each one. One property of this model is that a slight change in the input value may disproportionately impact the final probability prediction, as can be seen in Figure 6A. Additionally, the input vector dimension (number of predictor variables) must be kept low, as this can lead to costly model training processes and risks overfitting of the model to the training dataset with resultant poor generalisability of the model. Thus, when dealing with a large number of input variables, dimensionality reduction algorithms, such as principal component analysis (PCA) or linear discriminant analysis (LDA), are applied to reduce the number of predictors to those that are most informative. LR is a valuable model to be selected when different sources of data must be integrated in a binary classification task and low complexity is required.

In the literature, several works have applied LRs for their particular application. For example, Zheng et al. (2019) applied a sequence of four LRs to classify patients according to cardiac pathologies by using shape features extracted from cine MRI per segment. Thus they obtained a simple and easily interpretable model with only three input features per classifier. In another example, Arsanjani et al. (2013b) used a combination of classifiers improved with a LR to diagnose obstructive CAD using SPECT images. Finally, a LR was also applied by Baeßler et al. (2019a) to diagnose acute or chronic heart failure-like myocarditis.

### 2.2.2 Support Vector Machine (SVM)

Support vector machines (SVMs) are supervised ML models whereby the optimal linear or non-linear boundary segregating the data into two or more classes is identified. Prior to application of SVMs, the function which will be used for segregating the data should be selected, the so called kernel function. The most used kernels are the linear function or the Gaussian function. The remaining parameters of the SVM model are chosen empirically by training a set of models and keeping the settings as for the model with the lowest error. Since this model is insensitive to non-discriminating dimensions, a dimension reduction could be applied to the input variables to ease the training and obtain a better generalization as for linear regression. One major drawback of SVM is that it becomes memory expensive when large amounts of data are processed. SVM is a good choice to identify non-linearity and sparsity in the input data : different kernels can be used to fit different distributions.

Amongst all ML methods presented in this review, SVM is one of the most frequently used techniques and some works find this model to obtain the best performance. For example, Conforti and Guido (2005) presented a comparison of SVM models with different kernels (polynomial, Gaussian and Laplacian functions), the original 105 features and a feature selection of 25 as input for the early diagnosis of myocardial infarction. Similarly, Arsanjani et al. (2013a) and Ciecholewski (2011) found that a SVM model outperformed previous algorithms used in the task of CAD identification by using data extracted from SPECT images. In the first example, a second degree polynomial was used as kernel while in the second, a Gaussian function showed better performance. A SVM was also the best model when predicting acute coronary syndrome for 228 patients using histological, ECG and echo qualitative features, as shown by Berikol et al. (2016). As a final example, Borkar and Annadate (2018) obtained a very good accuracy for discrimination of DCM and atrial septal defect (ASD) patients using radiomics features and a SVM using a Gaussian kernel function.

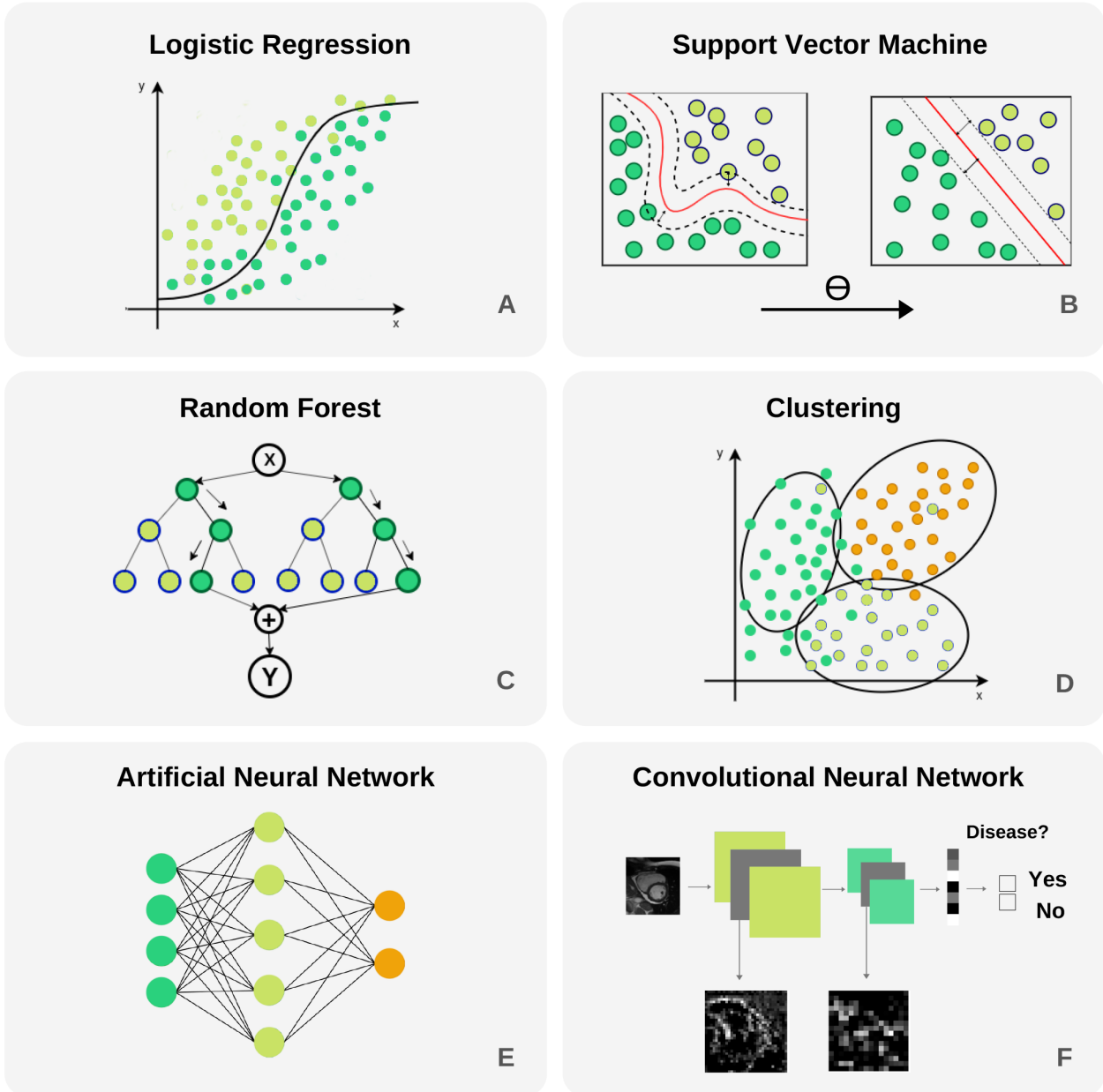


**Figure 5. Machine Learning technique distribution.**

### 2.2.3 Random Forest (RF)

This popular technique consists of a combination of decision trees (DTs) trained on different random samples of the training set. Each DT is a set of rules based on the input features values optimised for accurately classifying all elements of the training set. DTs are nonlinear models and tend to have high variance. If the DT is grown very deep it can pick up irregularities in the training dataset and consequently problems with overfitting may be encountered. This problem is counteracted in a RF through training on different samples of the training dataset. In this way the variance is reduced as the number of DT used, lowering therefore the generalization error and becoming a powerful technique. The final prediction is obtained by selecting the mode (for classification problems) or the mean (for regression problems) of all predictions. Two parameters must be selected for these models: the number of DTs and the depth level for each DT (*i.e.* the number of decisions). However, one must bear in mind that whilst discriminatory power on training dataset is increased as DT increase in depth, this is often at the expense of losing generalization power. RFs are chosen in order to transform the problem into a set of hierarchical queries represented as DTs. However, RFs are not very resistant to noise.

In the literature, RF or DT have been used frequently and were selected as the best performing model in some works. For example, Moreno et al. (2019) compared SVM and RF models in binary classification tasks with 2,964 input features for different cardiac pathologies, such as HF or HCM, using optical flow features in cardiac MRI, where the latter model obtained the best performance in most cases. In this case, each DT in the RF model had two depth levels for fast predictions in clinical practice. In another example, Wong et al. (2016) a RF outperformed a SVM for infarction detection by means of regional intensity analysis and motion modelling. As a final example, a RF was also used by Baeßler et al. (2018) to find the most discriminative features in texture analysis for T1-weighted cardiac MRI for HCM and normal patients classification.



**Figure 6. Selected machine learning techniques** (A) Logistic Regression is used to model the probability of a binary outcome. In the figure, Y axis represents the probability while X axis is the continuous input variable. Notice that small changes in X produce large variations of the final probability Y, mainly in the central part of the plot where the uncertainty of the model is larger. This model can be extended to a multi-class problems. (B) Support Vector Machine models are able to transform a non-linear boundary to a linear one using the kernel trick. During the training process, the distance between classes to the final selected boundary is maximized. (C) Random Forest is a technique that combines Decision Trees for reducing the uncertainty in the final prediction. It is based in a recursive binary splitting strategy where upper nodes are intended to be the most discriminative ones and subsequent branching is applied to less relevant variables. (D) Clustering is a technique with capability to find subgroups (clusters) along data. There are different cluster techniques, some need a prior number of clusters (kMeans), some of them can be used with output information (kNN), and others are fully unsupervised (meanShift). (E) Artificial neural networks are able to model complex non-linear relations between input variables and outcomes by propagating structured data (green nodes - input variables), e.g. radiomics, through hidden layers (blue nodes) to obtain an output (orange nodes). (F) Convolutional neural networks are the backbone of Deep Learning applications. They comprise input and output layers separated by multiple hidden layers. Their ability to hierarchically propagate imaging information and extract data-driven features implies automatic detection of relevant cardiac imaging biomarkers within the intermediate layers.

### 2.2.4 Cluster Analysis

Cluster analysis relates to the set of techniques that group together subjects in the form of data points according to similarity or proximity in the parametric space given by quantitative data extracted from input variables (image parameters and/or clinical information). This technique is very useful for patient stratification, since patients with apparently similar pathology, according to existing image analysis techniques, may fall into previously unrecognised subsets which may inform understanding of disease pathophysiology and inform more effective targeted therapies. Some clustering techniques require definition of outcomes, which means that lay on the unsupervised learning ML group. However, in classification tasks a very common supervised clustering strategy is k-nearest neighbours (kNN) clustering, where k is the number of neighbour subjects to look at when finding subgroups. In this case, surrounding diagnosed subjects will determine the outcome for a new patient. Most of the reviewed literature in clustering uses kNN, (Tabassian et al., 2017; Išgum et al., 2004).

Additional studies report the use of different cluster analysis for classification and/or discovery of cardiac pheno-groups. For example, Bruse et al. (2017) used hierarchical clustering techniques to subdivide 60 patients into three groups, a healthy cohort and two associated with congenital heart disease by using shape features from cardiac MRI. Wojnarski et al. (2018) also used a cluster analysis technique to group bicuspid aortic valve patients using CT data to find three phenotypes, and a RF was applied later to identify biomarker differences for these phenotypes using echo and clinical data.

### 2.2.5 Artificial Neural Network (ANN)

ANNs are motivated by the structure and interactions of biological neural networks. These models propagate input data in a hierarchical fashion through internal nodes in different layers. Each input line has a corresponding weight that must be estimated and iteratively adjusted during the training process. The ANN adapts until the weights giving optimal model performance are identified (Figure 6E). A nonlinear function is applied in each node to the contribution from incoming connections for obtaining its value/activation (net input function). Weight optimization provides the model with great adaptability to complex boundaries separating classes because of the high non-linear combinations of features involved in such models. Moreover, the connections between layers in an ANN can be used to design different networks depending on the application. Some caveats are the lack of an underlying theory for deciding the amount of layers or nodes in each layer, that depends on each problem and the amount of training data, as well as the trend for these models to adapt to the training set due to the large difference between number of parameters/weights of the model and training samples. ANNs are the best choice when large amount of data is available.

In the literature, these techniques have been applied frequently. For example, Tsai et al. (2004) used ANNs for detection of HCM and DCM patients using features extracted from echo. And more recently, two works by Nakajima et al. (2017) and Nakajima et al. (2018), with the same SPECT dataset with 1,001 cases, used ANNs to assess CAD using features extracted from stress and rest images with good accuracy.

### 2.2.6 Convolutional Neural Network (CNN)

CNNs are an extension of ANNs in which the value of a node in a given layer is affected by the spatial surrounding of a node in the previous layer through an operation called convolutional product. These models are specially designed for image processing, where spatial information for the nodes (pixels) is essential for the final prediction. The advantages and disadvantages are shared with ANNs. The main difference that make these models very popular nowadays is that images are provided as input without any

feature extraction. These models are able to extract their own meaningful features for the final prediction, as illustrated in Figure 6F. Additional models exist for compressing images to a lower dimensional representation space such as the Variational Autoencoder (VAE) and Generative Adversarial Networks (GANs) where additional analysis can be carried out more easily (*e.g.* clustering or classification with a SVM model).

A balanced approach should be taken to defining the layers of a CNN; whilst a deeper network loses information from the original image with each new layer, a network with few layers could have problems extracting meaningful features for the final prediction. CNNs are widely used for analysis of images and their application to cardiac imaging is reported in numerous studies. Wolterink et al. (2016) presented a framework where two cascading CNNs were able to detect CAC using cardiac computed tomography angiography (CTA) images. Their models had 8 to 13 convolutional layers that reduced 200x200 features (pixel intensities) to only 32. Zhang et al. (2018) used a 13-layer CNN to diagnose HCM, cardiac amyloidosis and pulmonary artery hypertension from echo images of size 224x224, that were reduced to 4,096 features. Madani et al. (2018) used a CNN model to predict left ventricular hypertrophy from echo images of size 120x160.

### 2.2.7 Additional steps

#### **Normalization**

Due to the diverse nature of different information sources in cardiac medicine, a normalization step is often required prior to model crafting. In general, learning algorithms benefit from standardization of the data set, *e.g.* some algorithms as SVM will improve cardiovascular predictions if all numerical features are zero centered and have a variance of the same magnitude order. Furthermore, some non-linear transformations can prepare the selected features to create a model more robust to outliers. Some of the most common techniques are mentioned in Table 5.

For illustration, Wong et al. (2016) shows that feature normalization has a positive impact in the ML model performance. Moreover, categorical variables should be encoded using *Integer encoding*, that consist in referencing each possible categorical value with an integer, or *One-Hot encoding*, that considers each possible categorical value as a new binary variable.

#### **Dimensionality reduction and feature selection**

Frequently, after extracting features from different sources such as demographic and clinical data, conventional indices and imaging parameters, one ends up with thousands of values defining a single patient. This information is later utilised during the training process of ML models, but the combination of a large number of input parameters with a limited number of samples (as usually happens in the medical field) can make the optimization problem expensive and may limit the generalization ability of our model. Thus, a dimensionality reduction algorithm is usually applied to the input data, such as principal component analysis (PCA) or linear discriminant analysis (LDA). Another proactive approach is feature selection. Such method will add sequentially the most discriminative features for the particular model instance being trained and dismiss redundant and non-informative ones.

For example, Tabassian et al. (2017) aimed to analyze deformation curves of the LV in echocardiographic records of 120 patients. The strain curves obtained were reduced by means of PCA and the result was used to train a strain kNN model. The resultant accuracy was 0.87, significantly higher than the clinician's results, 0.7. Cetin et al. (2019) identified HHD from healthy controls in 200 subjects with SVM and sequential

**Table 4.** Overview of machine learning techniques.

Technique	Description	Advantages	Disadvantages
Logistic Regression	Extension of linear regression that outputs a binary classification	Simple and explainable; Does not require empirical parameter tuning nor input feature normalization	Not suitable for non-linear problems; Prone to overfitting
Support Vector Machine	Finds the optimal boundary between classes	Can handle different types of non-linear class separations; Does not require large training samples	Requires hyperparameter tuning and non-linear kernel selection; Not suitable for very large datasets
Random Forest	Generates a set of hierarchical decision queries over the input and output data	Automatically defines feature importances; Does not require input feature normalization	Prone to overfitting; Requires definition of depth and number of trees
Artificial Neural Network	Models complex classification tasks by propagating input data through a network of non-linear transformations	Generalizes well when trained on large training samples	Difficult to interpret; Requires prior selection of a network design (e.g. depth of the network); Requires large training data
Convolutional Neural Network	ANNs adjusted for the processing and classification of image data	Flexible design depending on the applications; Can learn the optimal features directly from the images	Same limitations as ANNs
Clustering	Finds subgroups within the input feature space in an unsupervised manner	Useful to discover subgroups when the groups labels are not unknown a priori; Simple and fast	Sensitive to initialization and scale; Difficult to estimate the number of subgroups

forward feature selection. The predictive power of selected radiomics (AUC = 0.76) was substantially improved compared to conventional indices (AUC = 0.62).

### 2.2.8 Validation

In order to prove the validity of ML applied to cardiac imaging, results must be analyzed from two perspectives: statistical validity, considering the reproducibility with different cohorts and correctness of statistical values obtained (*i.e. metrics*), and intra-validity, regarding the clinical and real implications of the algorithms on a daily basis (*i.e. clinical effectiveness*). This is a pairwise co-existence; none of the ML cardiac imaging algorithms will be applied in clinical routine if there is no agreement from both sides. The following sub-sections will describe how the metrics and the clinical effectiveness are considered.

A cohort is sorted in a very specific manner for ML purposes. For the validity of the algorithms, a whole cardiac imaging data set should be split into 3 different subgroups, called *training set*, *validation set* and

**Table 5.** Common normalization techniques.

Technique	Description	Advantages
Mean/variance normalization	Centering to zero mean and unit variance	Avoid high variance features dominance
Range scaling	Mapping to a given interval	Robustness to small variances, preserve zero entries
Robust scaling	Mapping interval with interquartile information	Robustness to outliers
Image normalization	Brightness / contrast correction	Avoid variability in pixel intensity distribution

*testing set*, respectively. These groups are often selected in such way that subgroups share demographic distributions such as age or sex, in order to represent a real world scenario. Of course, a balanced distribution of control and pathologic subjects is also required. Once the ML model is trained and tested, different metrics are obtained to evaluate its performance.

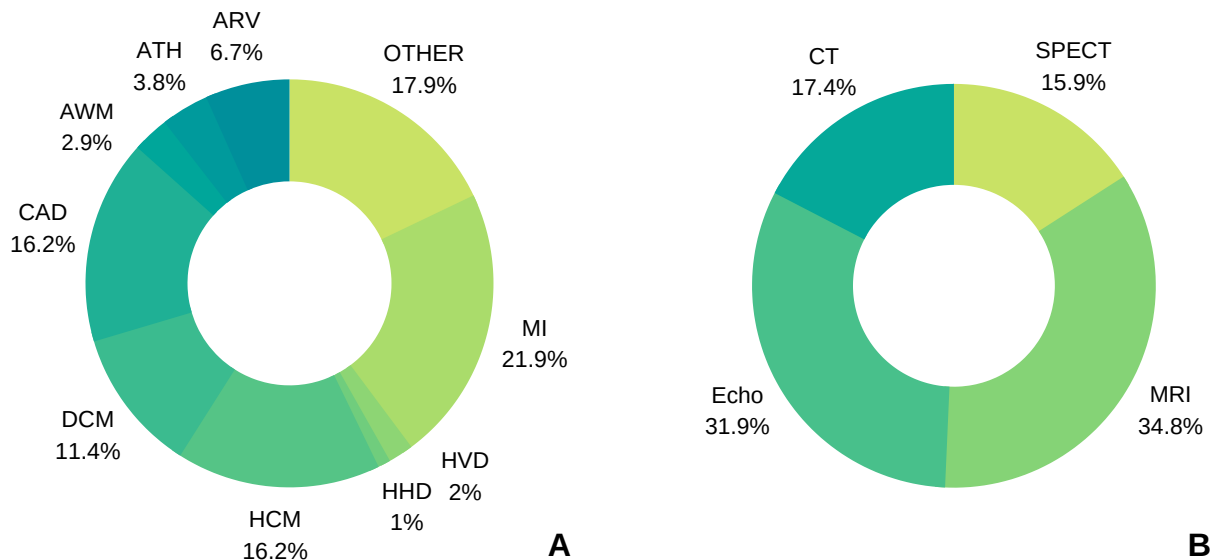
*Accuracy* measures the percentage of the algorithm classifying the input data correctly. It is a simple measure used in multiple scientific scenarios if there is no class imbalance (*i.e.* one class represented by a higher number of individuals compared with the rest). One of the drawbacks of using accuracy as the metric is that there is a knowledge loss when measuring False Positive and False Negative observations. Therefore, *Specificity* (Sp) and *Sensitivity* (Se) are widely used for measuring the performance of the algorithm, this time taking into consideration a possible class imbalance. In order to assess the performance of an algorithm and to understand where there might be a miss-classification issue, a table report called *Confusion Matrix* is used. This specific table layout is typically used to describe the performance of a supervised learning model. Each row of the matrix represents the instances in a predicted class while each column represents the instances in an actual class (or vice versa). This way, a computer scientist can have a wider overview of the parameters that may be changed or which classes are down-performing the algorithm. From sensitivity, specificity and the confusion matrix we can extract a performance plot representation called the receiver operating (ROC) *curve*. It is created by plotting the true positive rate (TP rate) against the false positive rate (FP rate) at various threshold settings. In ML, the true-positive rate is also known as sensitivity, recall or probability of detection. ROC analysis is related in a direct and natural way to cost/benefit analysis of diagnostic decision making. The area under the ROC curve (AUC) is another metric used to measure algorithms' performance.

It is noticeable that AUC can be derived from decision boundaries obtained by ML models despite the fact that it is trained with discrete outputs. When a trained model is asked to make a prediction, a probability can be computed and used to generate a ROC analysis.



### 3 DIAGNOSTIC APPLICATIONS - A REVIEW OF LITERATURE

We conducted an organised, pre-defined literature search of two electronic databases (Google Scholar, Scopus). We included studies using a well-defined ML technique for cardiac image analysis using echocardiography, cardiac magnetic resonance, cardiac computed tomography, or single photon emission computed tomography (SPECT). Our search strategy comprised a series of title and whole text searches with search terms combined using Boolean operators. Search results were filtered by subject area, limiting to entries from Cardiology, Computer Science and Engineering fields. We review in detail various achievements in the diagnosis of a wide range of cardiac diseases using image-based ML methods.



**Figure 7. Distribution of image-based diagnostic application using machine learning (A) per disease, (B) per modality.**

#### 3.1 Myocardial Infarction

Accurate and timely identification of MI helps in guidance of treatment strategies and reduction in the time taken for further tests. While MI diagnostic assessment using imaging is prone to inter- and intra-observer variability and requires significant amount of time of experts, ML methods offer opportunities to simplify, speed up and quantify the diagnostic process in combination with conventional assessment. For example, Nakada et al. (2006) demonstrated that MI diagnosis can be achieved in echo using quantitative motion features, avoiding the inter-observer human variability, as input for an ANN reaching an accuracy of 0.95. Later, Ungru et al. (2014) validated these results in mice models by inducing MI in healthy specimens with a prediction accuracy of 0.91, comparing several ML techniques. The same level of accuracy was obtained in the first texture analysis work, by Agani et al. (2007), with only 17 subjects and a clustering approach. This echocardiographic research was later extended with a full pool of texture features and 160 subjects by Sudarshan et al. (2016). In this work, DT, ANN and SVM models were benchmarked, with the best accuracy obtained using ANN: 0.94 (Se = 0.91, Sp = 0.97). Vidya et al. (2015) also performed an intensive texture analysis for 800 subjects, achieving an accuracy of 0.99 using a SVM. In their study, different pre-processing techniques were used to enhance the cardiac images.



Cardiac MRI has particular value in identification of MI. Since 2017, 13 studies were found integrating input variables from this imaging modality. Baeßler et al. (2017) used late gadolinium enhancement MRI as a standard reference for non-enhanced MRI discrimination between chronic and subacute MI. Radiomic features in combination with a LR gave an AUC of 0.92 in a cohort of 180 patients. Similarly, segment viability can be detected on cine MRI using also radiomics, as suggested by Larroza et al. (2018). This classification between viable, non-viable and remote segments yielded an AUC of 0.84. However, we believe that these encouraging results should be validated with a bigger cohort, and a well-balanced segment viability distribution. Recently, Zhang et al. (2019) tried to detect MI from non-enhanced MRI images. 212 patients with chronic MI and 87 healthy control patients were used to train a three-stage DL pipeline. The per-segment AUC for detecting chronic MI was 0.94 (Sp = 0.99, Se = 0.9)

Two consecutive state-of-the-art texture analysis studies were conducted in cardiac CT: Mannil et al. (2018) and Mannil et al. (2019). The former underlines ML ability for detecting MI on non-contrast low radiation dose CT images on the basis of features invisible to the radiologists' eye, obtaining an AUC of 0.78. The latter study evaluates the impact of automatic classification methods using different iterative reconstruction (IR) strengths for contrast-enhancement images, reporting an accuracy of 0.94 (IR 3) and 0.97 (IR 5) for the ML model, while three independent readers achieved 0.73 (IR 5) on average.

**Table 6.** Selected studies using image-based ML analysis for the diagnosis of Myocardial Infarction.

Publication	Modality	Biomarker	ML technique	Diagnostic	Sample size	Performance
Baeßler et al. (2017)	MRI	Radiomics	LR	MI	180	ACC = 0.92
Zhang et al. (2019)	MRI	Conventional	ANN	MI	299	AUC = 0.94
Larroza et al. (2018)	MRI	Radiomics	SVM	MI	50	AUC = 0.84
Moreno et al. (2019)	MRI	Conventional	SVM / RF	MI / HCM	45	ACC = 0.94
Rohé et al. (2015)	MRI	Conventional	DT / CL / SVM	MI	200	ACC = 0.95
Lekadir et al. (2015)	MRI	Conventional	PLS	MI	200	ACC = 0.98
Conforti and Guido (2005)	echo	Qualitative	SVM	MI	242	ACC = 0.97
Nakada et al. (2006)	echo	Conventional	ANN	MI / AP	91	ACC = 0.95
Ungru et al. (2014)	echo	Conventional	BN / DT / CL / SVM	MI	42	ACC = 0.91
Sudarshan et al. (2016)	echo	Radiomics	DT / ANN / SVM	MI	160	ACC = 0.94
Agani et al. (2007)	echo	Radiomics	CL	MI	17	ACC = 0.91
Vidya et al. (2015)	echo	Radiomics	SVM	MI	800	ACC = 0.99
Tabassian et al. (2017)	echo	Conventional	CL	MI	120	ACC = 0.87
Mannil et al. (2018)	CT	Radiomics	RF / CL / ANN	MI	87	ACC = 0.78
Mannil et al. (2019)	CT	Radiomics	DT	MI	30	ACC = 0.97
Wong et al. (2016)	CT	Conventional	SVM / RF	MI	170	ACC = 0.85
Sacha et al. (2002)	SPECT	Conventional	BN	MI / CAD	728	ACC = 0.78

### 3.2 Cardiomyopathies

Cardiomyopathy is a broad term describing various heart muscle disorders, a first level of subclassification is into ischaemic and non-ischaemic cardiomyopathies. This heterogeneous group of disorders have many causes, signs and symptoms, and require different treatments. The challenge of distinguishing different cardiomyopathies is illustrated by the fact that many of them can be associated with diverse manifestations. Each disease entity is associated with a typical imaging phenotypes. Whilst in routine image analysis, it is not always possible to discriminate individual cardiomyopathies, this may be improved with the more granular and quantitative approach to image analysis in ML models. These premises makes ML-based imaging diagnosis a perfect tool for computer aided analysis of heterogeneous cardiomyopathies. For

example, Gopalakrishnan et al. (2015) used a set of conventional indices from a pediatric cardiac MRI cohort of 83 subjects to characterize five different cardiomyopathies. In this study, a DT (AUC = 0.79) was compared with other ML methods (AUC = 0.73 - 0.77). Physiological versus pathological patterns of HCM remodeling were characterized by Narula et al. (2016) using an ensemble of models with conventional indices from 2D echo as input (Se = 0.96, Sp = 0.77).

In 2017, a relevant challenge was organized by Bernard et al. (2018). The Automated Cardiac Diagnosis Challenge (ACDC) aimed to evaluate the performance of different automatic methods for the classification of 150 subjects into 5 categories (healthy, HCM, DCM, ARV and MI) as provided by clinical experts. Several approaches were proposed for this problem. Khened et al. (2017) and Wolterink et al. (2017) used a set of conventional indices extracted from their own automatic delineations as input for a RF to obtain an accuracy of 0.96 and 0.86 on the test set, respectively. Isensee et al. (2017) also used a RF and their own segmentation scheme to classify cardiac cycle dynamic features, with an accuracy of 0.92. From this study, the benefit of the addition of temporal analysis is remarkable and provides a strong argument to be exploited further in future cine MRI studies. Cetin et al. (2017) used SVM to classify a complete pool of radiomic features from manual segmentation, obtaining also an accuracy of 0.92. Additional research has been done later using the same dataset. Snaauw et al. (2019) proposed a novel approach, using CNN bottleneck representations to discriminate between the five categories, obtaining a modest accuracy of 0.78. Another interesting approach was taken by Biffi et al. (2018). Their VAE architecture was trained with two multi-center cohorts of 537 and 200 patients and tested on their own dataset and on the ACDC dataset, obtaining an accuracy of 1.0 and 0.9, respectively.

Later, Puyol-Antón et al. (2018) combined MRI and echo data and per-segment motion analysis to diagnose DCM by means of LDA, achieving an accuracy of 0.94 (Sp = 0.96, Se = 0.93). Recently, Neisius et al. presented two complementary works approaching HCM and HHD diagnosis from two different perspectives, Neisius et al. (2019a) and Neisius et al. (2019b). In the first work, a complete strain analysis and a LR achieved an accuracy of 0.67 (Sp = 0.64, Se = 0.68). The second one applied an exhaustive texture analysis for T1 mapping. A selection of 6 radiomic texture features and a linear SVM model showed an improved accuracy of 0.86 (Sp = 0.91, Se = 0.77).

**Table 7.** Selected studies using image-based ML analysis for diagnosis of various cardiomyopathies.

Publication	Modality	Biomarker	ML technique	Diagnostic	Sample size	Performance
Gopalakrishnan et al. (2015)	MRI	Conventional	BN	HCM / DCM / ARV / MYO	83	AUC = 0.79
Baeßler et al. (2018)	MRI	Radiomics	RF / LR	HCM	62	AUC = 0.95
Wolterink et al. (2017)	MRI	Conventional	RF	MI / HCM / DCM / ARV	100	ACC = 0.86
Cetin et al. (2017)	MRI	Radiomics	SVM	MI / HCM / DCM / ARV	100	ACC = 0.92
Isensee et al. (2017)	MRI	Conventional	RF	MI / HCM / DCM / ARV	100	ACC = 0.92
Khened et al. (2017)	MRI	Conventional	RF	MI / HCM / DCM / ARV	100	ACC = 0.96
Biffi et al. (2018)	MRI	Deep Learning	VAE	HCM	737	ACC = 1.00
Zheng et al. (2019)	MRI	Conventional	LR	MI / HCM / DCM / ARV	100	ACC = 0.94
Neisius et al. (2019b)	MRI	Conventional	LR	HHD / HCM	224	ACC = 0.67
Neisius et al. (2019a)	MRI	Radiomics	SVM	HHD / HCM	224	ACC = 0.86
Snaauw et al. (2019)	MRI	Deep Learning	CNN	MI / HCM / DCM / ARV	100	ACC = 0.78
Moreno et al. (2019)	MRI	Conventional	SVM / RF	MI / HCM	45	ACC = 0.94
Bruse et al. (2017)	MRI	Conventional	CL	CHD	60	ACC = 0.89
Narula et al. (2016)	echo	Conventional	SVM / RF / ANN	HCM / ATHCM	139	ACC = 0.91
Tsai et al. (2004)	echo	Radiomics	ANN / GA	HCM / DCM	90	ACC = 0.95
Lu et al. (2018)	echo	Deep Learning	CNN	HCM / DCM	927	AUC = 0.84
Puyol-Antón et al. (2018)	echo / MRI	Conventional	SVM	DCM	69	ACC = 0.94
Borkar and Annadate (2018)	echo	Radiomics	SVM	DCM / ASD	439	ACC = 0.98
Madani et al. (2018)	echo	Deep Learning	CNN / GAN	HCM	772	ACC = 0.92
Zhang et al. (2018)	echo	Deep Learning	CNN	HCM / CA / PH	14,035	AUC = 0.93

### 3.3 Coronary Artery Disease

Non-invasive imaging assessment for detection of CAD has a great potential impact on clinical practice. If ischemia can be discarded with a high probability, invasive coronary angiography (ICA) may be avoided. Advanced ML image analysis techniques can improve the diagnostic accuracy of myocardial ischemia and through this improve CAD management and reduce unnecessary downstream testing.

A very first approach dating from 1999 showed promising results. Considering ICA as reference standard, Kukar et al. (1999) used scintigraphy, ECG and data on symptoms from 327 patients to detect CAD. Different ML models and feature selections were tested and in some cases the ML model outperformed clinicians in accuracy (0.92 versus 0.91, respectively), but not in sensitivity. An exhaustive approach by Kurgan et al. (2001) sets the base for a semi-automated diagnosis pipeline in perfusion SPECT. In their work, a pseudo-DT was crafted from intensity-based features, for 267 subjects, achieving an overall accuracy of 0.8. Another similar work was conducted in perfusion SPECT ( $n = 115$ ) and Equilibrium Radionuclide Angiocardigraphy ( $n = 58$ ) by Bagher-Ebadian et al. (2004). Using ICA as ground truth for both studies, CAD was assessed using mean and variance intensity features extracted from stress and rest studies in anterior, left anterior oblique and left lateral projections, obtaining accuracies of 0.77 and 0.73 with an ANN. A similar methodology was covered in detail by Guner et al. (2010). A cohort of 308 patients with clinical coronary CTA assessment was utilised to train an ensemble of ANNs for CAD discrimination. A combination of demographic information and frequency, phase and brightness features provided as input variables resulted in model accuracy of 0.74, outperforming some of the non-expert clinicians. The results revealed that single-vessel CAD was more difficult to identify. Recently, complementary work by Shibutani et al. (2019), including per-segment analysis, was performed on 21 patients who underwent perfusion SPECT. A total of 109 abnormal regions were examined and an ANN achieved better results than two independent observers for stress defect and ischemia detection, with respect to ICA as gold standard.

Alternatively, resting CT can be used for CAD diagnosis without additional contrast injection for stress imaging. Han et al. (2018) used 3 quantitative features and the 17-segment model to obtain 51 input variables for training a gradient boosting algorithm, a ML technique that builds an ensemble of classifiers to improve the final accuracy. Invasive angiography and FFR were used as gold standard. This study based on a 252 patients' cohort from 5 countries and 17 centres, obtained an AUC of 0.75. Another state-of-the-art approach using cardiac CT, by Coenen et al. (2018), showed that improved reclassification of non-significant stenosis is possible with ML-based image analysis. 351 patients, including 525 vessels with invasive FFR comparison were included in this study. A set of 28 anatomical features were computed from semi-automatic 3D CT reconstructions. On a per-vessel basis, diagnostic accuracy improved from 0.58 (CTA) to 0.78 (ML model). The per-patient accuracy improved from 0.71 to 0.85.

### 3.4 Atherosclerosis

Atherosclerosis is a strong and independent predictor of cardiovascular events. Plaque is often scored manually by experts, which leads to an increase in workload, is prone to false positives and to inter-observer variability regarding CAC detection. Hence, the ability to quickly and reliably quantify calcification using ML models provides additive value to clinical risk scoring tools and will enable superior prognostication of individuals. To overcome these issues and bring robustness to such procedures, intensive cardiac imaging feature extraction may be utilised.

Işgum et al. (2004) designed an automated method for detection of aortic calcification, an indicator of established atherosclerotic disease, based on shape and intensity features. 40 abdominal scans contained a total of 249 CAC determined by a human observer. The method detected 209 CAC ( $Se = 0.84$ ) at the

**Table 8.** Selected studies using image-based ML analysis for diagnosis of coronary artery disease.

Publication	Modality	Biomarker	ML technique	Diagnostic	Sample size	Performance
Arsanjani et al. (2013b)	SPECT	Conventional	LB	CAD	1,181	AUC = 0.94
Betancur et al. (2019)	SPECT	Deep Learning	CNN	CAD	1,160	AUC = 0.81
Nakajima et al. (2017)	SPECT	Conventional	ANN	CAD	1,365	AUC = 0.75
Nakajima et al. (2018)	SPECT	Conventional	ANN	CAD	106	AUC = 0.96
Guner et al. (2010)	SPECT	Conventional	ANN	CAD	65	AUC = 0.74
To and Pham (2009)	SPECT	Conventional	DT / GA	CAD	267	ACC = 0.83
Ciecholewski (2011)	SPECT	Qualitative	SVM	CAD	267	ACC = 0.92
Bagher-Ebadian et al. (2004)	SPECT	Deep Learning	ANN / CL	CAD	173	AUC = 0.80
Shibutani et al. (2019)	SPECT	Conventional	ANN	CAD	109	AUC = 0.88
Juarez-Orozco et al. (2018)	PET	Conventional	N/A	CAD / MACE	1,234	AUC = 0.72
Coenen et al. (2018)	CT	Conventional	N/A	CAD	352	AUC = 0.84
Han et al. (2018)	CT	Conventional	GBRT	CAD	252	AUC = 0.75
Kukar et al. (1999)	echo / SCI	Qualitative	ANN	CAD	327	ACC = 0.80
Zhang et al. (2017)	echo	Radiomics	SVM	CAD	61	AUC = 0.88
Berikol et al. (2016)	echo	Qualitative	SVM	CAD	228	ACC = 0.99

expense of 1.0 false-positive object per scan on average, while the presence of contrast increased the number of incorrect classifications. This work was complemented by Işgum et al. (2007), analysing cardiac CT with a more sophisticated feature set to obtain a final accuracy of 0.74 for CAC detection. Feature selection showed that no shape features were included in the classification stage, highlighting the discriminating power of texture analysis in CT.

Wolterink et al. (2014) used cardiac CT scans thresholded at 130 Hounsfield units and a connected-component analysis to obtain candidate regions in the coronary arteries for 164 subjects with expert annotations. Their texture analysis was similar to Işgum et al. (2007), and the resulting accuracy with DTs was 0.86 for risk stratification. This work also introduced a guided review where the most uncertain CAC were manually inspected again, increasing the overall accuracy up to 0.92. Later, a large radiomic pool of 4440 features was extracted from a group of 60 subjects with Napkin Ring Sign (NRS) and non-NRS plaques with similar degree of manually segmented CAC by Kolossváry et al. (2017). This research unveils the value of radiomics to find discriminative features: almost half of them reached an AUC of 0.8, short- and long-run low gray-level emphasis and surface ratio of high attenuation voxels had the highest AUC values (0.92 and 0.89, respectively). Finally, in a recent work, Zreik et al. (2018) used recurrent CNNs in multi-planar reformatted coronary CTA images previously annotated by an expert, achieving accuracies of 0.77 and 0.8 for plaque and stenosis characterization, respectively.

**Table 9.** Selected studies using image-based ML analysis for diagnosis of aortic and coronary atherosclerosis.

Publication	Modality	Biomarker	ML technique	Diagnostic	Sample size	Performance
Kolossváry et al. (2017)	CT	Radiomics	N/A	ATH	60	AUC = 0.91
Zreik et al. (2018)	CT	Deep Learning	CNN	ATH	163	ACC = 0.80
Wolterink et al. (2014)	CT	Radiomics	DT	ATH	164	ACC = 0.86
Wolterink et al. (2016)	CT	Deep Learning	CNN	ATH	250	ACC = 0.72
Işgum et al. (2007)	CT	Conventional	CL	ATH	615	ACC = 0.74
Işgum et al. (2004)	CT	Conventional	CL	ATH	249	ACC = 0.83

### 3.5 Valvular Heart Disease

Heart valve disease is an increasingly common pathology of the cardiovascular system and an increasing number of patients are expected to require heart valve replacement. Such diverse group of disorders can benefit from cardiac imaging ML integration through early diagnosis, treatment or surgery planning. For instance, Elalfi et al. (2013) used imaging preprocessing techniques (Gaussian and Gabor filtering) and intensity and texture features to generate an ANN model with 120 echo images. These images were organized in 8 types of valvular diseases. The obtained accuracy was high at 0.93. This is encouraging particularly considering the diversity of outcomes.

A similar approach was addressed for mitral regurgitation (MR) severity estimation using echo videos. Moghaddasi et al. (2016) took advantage of binary patterns as image descriptors which include details from different viewpoints of the heart. kNN and SVM models were trained with 102 patients divided in four groups: mild MR ( $n = 34$ ), moderate MR ( $n = 32$ ), severe MR ( $n = 36$ ) and control ( $n = 37$ ). SVM obtained the best accuracy, 0.99. Another interesting work mentioned in previous sections was conducted by Wojnarski et al. (2018).

**Table 10.** Selected studies using image-based ML analysis for diagnosis of valvular heart disease.

Publication	Modality	Biomarker	ML technique	Diagnostic	Sample size	Performance
Elalfi et al. (2013)	echo	Radiomics	ANN	HVD	120	ACC = 0.93
Moghaddasi et al. (2016)	echo	Radiomics	SVM / CL	HVD	102	ACC = 0.99
Wojnarski et al. (2018)	CT	Conventional	CL	HVD	656	N/A

### 3.6 Heart Failure

Heart failure with preserved ejection fraction (HFpEF) is a heterogeneous group of disorders with variable treatment response and poor outcomes. There has been increasing interest in improved phenotyping of HFpEF to aid understanding of underlying disease mechanisms and also to guide treatments towards subtypes who may derive benefit. Given the heterogeneous nature of HFpEF, ML techniques are a very suitable tool for diagnosis and image phenotype stratification. Some of the reviewed studies in previous sections were also related to the characterization of heart failure (Moreno et al., 2019; Tabassian et al., 2018). Additional work in this field was presented by Shah et al. (2015), that prospectively studied 397 HFpEF patients and performed detailed clinical, laboratory, electrocardiographic and echocardiographic phenotyping of the study participants. Clustering techniques were applied to divide the cohort into 3 pheno-groups. Phenomapping was helpful for improved classification and categorization of HFpEF patients and risk stratification by means of SVM, obtaining an AUC of 0.76. ML applied to HF phenogrouping is also used for prognostic tasks by Cikes et al. (2019).

### 3.7 Abnormal Wall Motion

Most of the existing quantitative techniques for wall motion characterization involve laborious post-processing and image analysis. For this reason, ML approaches with a minimum user input and a correlation with the segmental cardiac function can improve clinical routine and triage.

For instance, Mantilla et al. (2013) detected wall motion abnormalities in the left ventricle by means of spatiotemporal profiles obtained with pseudo delineations of 20 MRI patients. Wavelet and Fourier

**Table 11.** Selected studies using image-based ML analysis for diagnosis of heart failure.

Publication	Modality	Biomarker	ML technique	Diagnostic	Sample size	Performance
Moreno et al. (2019)	MRI	Conventional	SVM / RF	MI / HCM / HF	45	ACC = 0.77
Baeßler et al. (2019a)	MRI	Radiomics	LR	HF	79	AUC = 0.85
Tabassian et al. (2018)	echo	Conventional	CL	HHD / HFePF	100	ACC = 0.81
Shah et al. (2015)	echo	Conventional	CL / SVM	HFePF	397	AUC = 0.76
Cikes et al. (2019)	echo	Conventional	CL	HF	1,106	N/A

transforms were applied and the subsequent spaces were used to generate two models: SVM and dictionary learning (DICTL). Dictionary Learning at mid-cavity level obtained the best accuracy, 0.96 (Sp = Se = 0.96). Afshin et al. (2013) exploited intensity distributions per segment. In their work, a reference frame automatically propagated to each cardiac phase generated the 16 segments for the whole cardiac cycle. LDA reduced feature dimensionality and linear SVM obtained an accuracy of 0.86 in a cohort of 58 MRI subjects.

Kusunose et al. (2019) used a total of 300 patients with a history of myocardial infarction and 100 age-matched control patients. Each case contained echo from short-axis views at end-diastolic, mid-systolic, and end-systolic phases. An ensemble of 10 CNN models were trained. AUC obtained by the ML ensemble was similar to that produced by the cardiologists and sonographer readers (0.99 vs. 0.98, respectively), and the same occurred for territory detection (0.97 vs. 0.95, respectively).

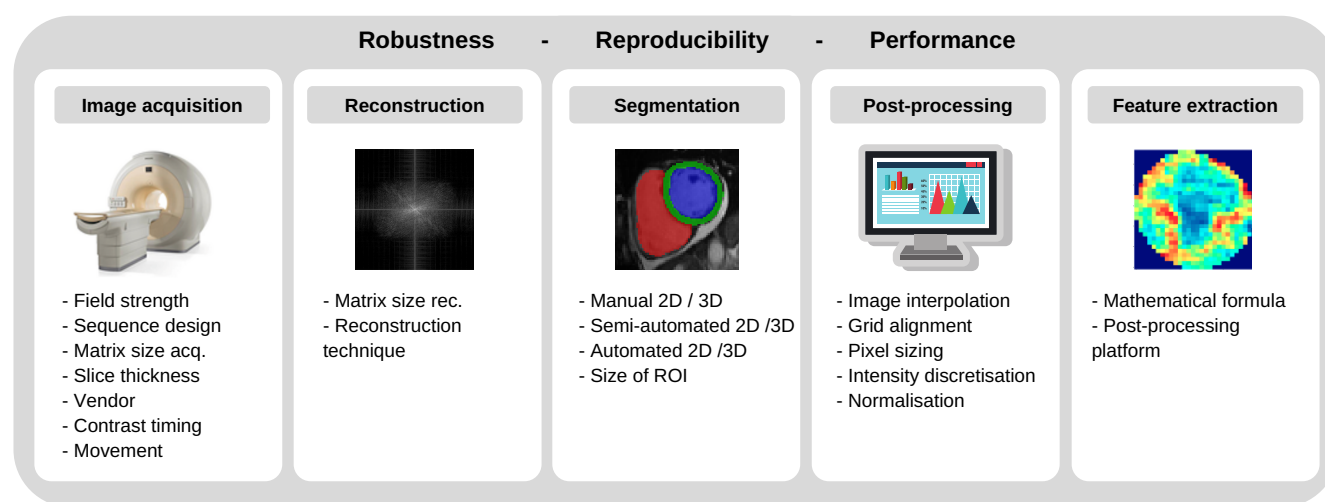
**Table 12.** Selected studies using image-based ML analysis for diagnosis of wall motion abnormalities.

Publication	Modality	Biomarker	ML technique	Diagnostic	Sample size	Performance
Mantilla et al. (2013)	MRI	Conventional	SVM / DICTL	AWM	20	ACC = 0.96
Afshin et al. (2013)	MRI	Conventional	SVM	AWM	58	ACC = 0.86
Kusunose et al. (2019)	echo	Deep Learning	CNN	AWM	400	AUC = 0.99

## 4 DISCUSSION AND FUTURE PERSPECTIVES

Reflected by the large amount of already published data reviewed above, AI in general and ML in particular have been shown to exhibit a huge potential to significantly influence diagnostic decision making in cardiology. In contrast to ‘traditional’ statistical methods, the techniques from the field of AI are able to deal with large amounts of data (‘big data’) and to integrate information from all fields of clinical care, including e.g. clinical parameters (‘clinomics’), genetic information (‘genomics’), protein metabolism (‘proteomics’), and imaging data (‘radiomics’) within one large all-encompassing analysis framework. The steadily increasing computational power and the increasing availability of data through mobile applications and the digital transformation of the global healthcare systems further contribute to the advancement of the field. Consequently, future studies will continue the use of these techniques in order to allow translation into routine clinical practice and thus pave the way towards improved diagnostic decision making tailored to individual patient-specific needs (subsumed under the heading ‘precision medicine’).

Yet, in today's clinical routine, diagnostic decisions are still drawn from stand-alone parameters (e.g., LV ejection fraction, Ibáñez et al. (2017)), despite many encouraging research studies from the field of AI. On a per-patient basis, the diagnostic and prognostic value of such independent functional parameters was found to be low, Park and Kim (2018). Given the diversity of cardiovascular imaging modalities, their potential additive value for more accurate diagnostics and risk stratification remains unclear. Besides, continued reliance on subjective visual interpretation, has resulted in considerable observer-dependencies and lack of standardisation. The application of AI and precision medicine to CVD, however, is currently still in its infancy, and faces huge challenges which have to be overcome by future research. To establish novel imaging biomarkers and AI techniques, the robustness and reproducibility of quantitative imaging features must be ensured, Zwanenburg et al. (2016). Up to now, trained models and algorithms have limited generalizability due to the multiplicity of potential influencing factors (including differing scanners, vendors, CT radiation doses, MRI field strengths, sequences, sequence parameters, spatial and temporal resolutions, reconstruction algorithms, reconstruction parameters, and so forth; Figure 8).



**Figure 8. Factors involving robustness and reproducibility of quantitative imaging features.**

For CT and positron emission tomography (PET) imaging, a variety of studies have highlighted difficulties in producing reliably reproducible radiomic features when using different vendors, scanners, and acquisition or reconstruction settings (Balagurunathan et al., 2014; Lubner et al., 2017; Mackin et al., 2015; Nyflot et al., 2015; Shafiq-ul Hassan et al., 2017; Zhao et al., 2016, 2014; Hinzpeter et al., 2017; Mannil et al., 2019). While the 'image biomarker standardisation initiative' (IBSI) has established certain standards for radiomic studies, Zwanenburg et al. (2016), the specific needs of cardiac imaging have not yet been met. For cardiac CT, Hinzpeter et al. and Mannil et al. have investigated the influence of slice thickness, Hinzpeter et al. (2017), and iterative reconstruction algorithms, Mannil et al. (2019), on the robustness and comparability of radiomics features – observing considerable feature variations for differing technical settings. In contrast to this evolving body of literature on CT imaging, little evidence exists concerning the robustness of radiomic features in MRI (Collewet et al., 2004; Mayerhoefer et al., 2009; Park and Kim, 2018; Saha et al., 2018). Given the qualitative nature of most MRI sequences and the absence of absolute signal intensities (in contrast to CT imaging for instance), the robustness of radiomic features seems to heavily depend on acquisition sequences as well as acquisition and reconstruction parameters. In a recent phantom study, Baeßler et al. sought to evaluate the influence of different acquisition sequences, spatial resolution, and postprocessing settings (Baeßler et al., 2019b) revealing that the robustness of



radiomic features was heavily influenced by the acquisition sequence and image resolution as well as image processing settings. Future work not only needs to add to the understanding of such influencing factors but should also merge into extensive standardisation efforts to ensure reliability of all imaging measures.

Several attempts to improve radiomic feature robustness through image normalisation have been made. For more reliable quantification of emphysema, normalization was proposed for chest CT images reconstructed with different kernels, Gallardo-Estrella et al. (2016). The proposed method decomposed each scan into multiple frequency bands, the energy of which was then normalized to the average energies observed in a set of scans reconstructed with a reference kernel. Building on these results, Jin et al. used a deep learning-based strategy for CT image normalization by means of a U-Net, Jin et al. (2019). For harmonisation of MRI images, similar deep learning algorithms were proposed for dynamic contrast enhanced (DCE) images in breast, Samala et al. (2019), and brain MRI, Dewey et al. (2019). Although yielding promising results, the applicability of such approaches in cardiovascular applications remains elusive, which is due to inherent particularities of cardiac imaging. Other than breast and brain, the human heart is steadily moving because of breathing and myocardial contraction. Second, the contrast bolus inside the ventricular lumen may influence the myocardial features. Aside from these specific characteristics, the impact of image normalisation on extracted radiomic features has not been fully investigated yet. Besides lack of standardisation of technical factors, the recent trend to train ML classifiers on relatively small datasets is a major issue of current methodology and hampers translation of the novel techniques into routine clinical practice. The small sample sizes in most cardiovascular imaging studies (usually  $N < 100$  with  $> 1000$  variables in the models) lead to a considerable risk of overfitting. Overfitting leads to poor generalisability of the classification models when deployed to different datasets. Besides the current lack of imaging feature standardisation and the problem of model-overfitting, other challenges should be acknowledged when it comes to translation of AI to daily patient care. While big data aims to integrate data from various sources, the current lack of interoperability of many systems used in clinical care poses huge obstacles for data pooling approaches. Several national and international attempts are currently under way to solve interoperability issues for medical care and to allow a seamless integration of different databases and informatic systems used in healthcare.

The ability to understand the rationale behind ML generated diagnostic grouping may be crucial in order to achieve widespread clinical use of this novel technology. However, especially with DL techniques, those are usually considered as being ‘black boxes’, which do not deliver any insights or explanations on how they reached their conclusions and upon which, *e.g.* imaging features, they based their decision. Although several attempts and ongoing research exist on delivering insights into an algorithm’s decision making (such as heatmaps), these attempts are not sufficiently elaborated so far to convince most cardiology practitioners to use a diagnostic black box in daily clinical patient management. Thus, interpretability of DL models including the psychological aspects of digital transformation itself should represent one major aim of future research. Radiomics might represent a valid alternative for the meantime, since radiomic models – in cases where an appropriate and stepwise feature reduction is performed before training the ML algorithm – deliver more insights into the specific imaging features which were important for the model’s classification performance. In summary, solutions achieving better standardisation or normalisation resulting in better generalisability are an important condition to bring radiomics and AI into cardiac precision medicine with concomitant improved diagnostic approaches to CVDs. In addition, better interoperability of healthcare informatics systems should be achieved. Finally, the steadfast progression of AI approaches to clinical decision making represent an abrupt change from conventional medical reasoning, as such, it is essential to engage with the psychological impact of the ongoing digital transformation in order to facilitate the transition of medical practice in line with advancing technologies. The extensive and encouraging work



reviewed in this article above pursues one common goal for the future of cardiovascular medicine: to pave the way towards better diagnosis and precision medicine in cardiology. The application of AI to cardiology holds the promise to revolutionize individual disease monitoring and treatment (Leopold and Loscalzo, 2018), thus overcoming the currently used ‘one size fits all’ approach derived from large clinical studies.

## 5 TABLES

**Table 5.** List of abbreviations

Machine Learning abbreviations		Cardiac imaging and clinical abbreviations	
AI	Artificial Intelligence	ARV	Abnormal Right Ventricle
AUC	Area Under Curve	ASD	Atrial Septal Defect
ANN	Artificial Neural Networks	CAC	Coronary Artery Calcium
BN	Bayesian Network	CAD	Coronary Artery Disease
CNN	Convolutional Neural Network	CMR	Cardiac Magnetic Resonance
CL	Clustering	CT	Computed Tomography
DL	Deep Learning	CTA	Computed Tomography Angiography
DT	Decision Tree	CVD	Cardiovascular Disease
GA	Genetic Algorithm	DCM	Dilated Cardiomyopathy
GAN	Generative Adversarial Network	ECG	Electrocardiography
GBRT	Gradient Boosting Trees	echo	Echocardiography
kNN	k-Nearest Neighbours	HCM	Hypertrophic Cardiomyopathy
LDA	Linear Discriminant Analysis	HF	Heart Failure
LR	Logistic Regression	HFpEF	Heart Failure with preserved Ejection Fraction
ML	Machine Learning	HHD	Hypertensive Heart Disease
PCA	Principal Component Analysis	ICA	Invasive Coronary Angiography
PLS	Partial Least Squares	IR	Iterative Reconstruction
RF	Random Forest	LV	Left Ventricle
ROC	Receiver Operating Characteristic Curve	MACE	Major Adverse Cardiovascular Event
Se	Sensitivity	MI	Myocardial Infarction
Sp	Specificity	MR	Mitral Regurgitation
SVM	Support Vector Machine	MRI	Magnetic Resonance Imaging
VAE	Variational Autoencoder	MYO	Myocarditis
		NRS	Napkin Ring Sign
		PET	Positron Emission Tomography
		ROI	Region Of Interest
		RV	Right Ventricle
		SPECT	Single Positron Emission Computed Tomography

## AUTHOR CONTRIBUTIONS

C.M. performed the literature search and its categorization, developed statistics, wrote the diagnostics literature section and coordinated the remaining sections. V.M.C. wrote the machine learning section and contributed to the remaining sections. C.I. wrote the data section and designed the figures. K.L. supervised the manuscript development, wrote the abstract and the introduction and reviewed all sections. Z.R., B.B. and S.P. contributed to drafting and critical appraisal of the manuscript. All authors reviewed the manuscript.

## FUNDING

This work was partly funded by the European Union's Horizon 2020 research and innovation programme under grant agreement No 825903 (euCanSHare project). SEP acts as a paid consultant to Circle Cardiovascular Imaging Inc., Calgary, Canada and Servier. SEP acknowledges support from the National

Institute for Health Research (NIHR) Cardiovascular Biomedical Research Centre at Barts, from the SmartHeart EPSRC programme grant (EP/P001009/1) and the London Medical Imaging and AI Centre for Value-Based Healthcare. SEP and KL acknowledge support from the CAP-AI programme, London's first AI enabling programme focused on stimulating growth in the capital's AI Sector. ZRE is supported by a British Heart Foundation Clinical Research Training Fellowship (FS/17/81/33318).

## REFERENCES

- Aerts, H. J., Velazquez, E. R., Leijenaar, R. T., Parmar, C., Grossmann, P., Carvalho, S., et al. (2014). Decoding tumour phenotype by noninvasive imaging using a quantitative radiomics approach. *Nature communications* 5, 4006
- Afshin, M., Ayed, I. B., Punithakumar, K., Law, M., Islam, A., Goela, A., et al. (2013). Regional assessment of cardiac left ventricular myocardial function via mri statistical features. *IEEE transactions on medical imaging* 33, 481–494
- Agani, N., Abu-Bakar, S., and Salleh, S. S. (2007). Application of texture analysis in echocardiography images for myocardial infarction tissue. *Jurnal Teknologi* 46, 61–76
- Arsanjani, R., Xu, Y., Dey, D., Fish, M., Dorbala, S., Hayes, S., et al. (2013a). Improved accuracy of myocardial perfusion spect for the detection of coronary artery disease using a support vector machine algorithm. *Journal of Nuclear Medicine* 54, 549–555
- Arsanjani, R., Xu, Y., Dey, D., Vahistha, V., Shalev, A., Nakanishi, R., et al. (2013b). Improved accuracy of myocardial perfusion spect for detection of coronary artery disease by machine learning in a large population. *Journal of Nuclear Cardiology* 20, 553–562
- Baeßler, B., Luecke, C., Lurz, J., Klingel, K., Das, A., von Roeder, M., et al. (2019a). Cardiac mri and texture analysis of myocardial t1 and t2 maps in myocarditis with acute versus chronic symptoms of heart failure. *Radiology* 292, 608–617
- Baeßler, B., Mannil, M., Maintz, D., Alkadhi, H., and Manka, R. (2018). Texture analysis and machine learning of non-contrast t1-weighted mr images in patients with hypertrophic cardiomyopathy—preliminary results. *European journal of radiology* 102, 61–67
- Baeßler, B., Mannil, M., Oebel, S., Maintz, D., Alkadhi, H., and Manka, R. (2017). Subacute and chronic left ventricular myocardial scar: accuracy of texture analysis on nonenhanced cine mr images. *Radiology* 286, 103–112
- Baeßler, B., Weiss, K., and dos Santos, D. P. (2019b). Robustness and reproducibility of radiomics in magnetic resonance imaging: a phantom study. *Investigative radiology* 54, 221–228
- Bagher-Ebadian, H., Soltanian-Zadeh, H., Setayeshi, S., and Smith, S. T. (2004). Neural network and fuzzy clustering approach for automatic diagnosis of coronary artery disease in nuclear medicine. *IEEE Transactions on Nuclear Science* 51, 184–192
- Balagurunathan, Y., Kumar, V., Gu, Y., Kim, J., Wang, H., Liu, Y., et al. (2014). Test–retest reproducibility analysis of lung ct image features. *Journal of digital imaging* 27, 805–823
- Berikol, G. B., Yildiz, O., and Özcan, İ. T. (2016). Diagnosis of acute coronary syndrome with a support vector machine. *Journal of medical systems* 40, 84
- Bernard, O., Lalonde, A., Zotti, C., Cervenansky, F., Yang, X., Heng, P.-A., et al. (2018). Deep learning techniques for automatic mri cardiac multi-structures segmentation and diagnosis: Is the problem solved? *IEEE transactions on medical imaging* 37, 2514–2525
- Betancur, J., Hu, L.-H., Commandeur, F., Sharir, T., Einstein, A. J., Fish, M. B., et al. (2019). Deep learning analysis of upright-supine high-efficiency spect myocardial perfusion imaging for prediction of obstructive coronary artery disease: A multicenter study. *Journal of Nuclear Medicine* 60, 664–670

- Biffi, C., Oktay, O., Tarroni, G., Bai, W., De Marvao, A., Doumou, G., et al. (2018). Learning interpretable anatomical features through deep generative models: Application to cardiac remodeling. In *International Conference on Medical Image Computing and Computer-Assisted Intervention* (Springer), 464–471
- Borkar, S. and Annadate, M. (2018). Supervised machine learning algorithm for detection of cardiac disorders. In *2018 Fourth International Conference on Computing Communication Control and Automation (ICCUBEA)* (IEEE), 1–4
- Bruse, J. L., Zuluaga, M. A., Khushnood, A., McLeod, K., Ntsinjana, H. N., Hsia, T.-Y., et al. (2017). Detecting clinically meaningful shape clusters in medical image data: metrics analysis for hierarchical clustering applied to healthy and pathological aortic arches. *IEEE Transactions on Biomedical Engineering* 64, 2373–2383
- Cetin, I., Petersen, S. E., Napel, S., Camara, O., Ballester, M. Á. G., and Lekadir, K. (2019). A radiomics approach to analyze cardiac alterations in hypertension. In *2019 IEEE 16th International Symposium on Biomedical Imaging (ISBI 2019)* (IEEE), 640–643
- Cetin, I., Sanroma, G., Petersen, S. E., Napel, S., Camara, O., Ballester, M.-A. G., et al. (2017). A radiomics approach to computer-aided diagnosis with cardiac cine-mri. In *International Workshop on Statistical Atlases and Computational Models of the Heart* (Springer), 82–90
- Chen, R., Lu, A., Wang, J., Ma, X., Zhao, L., Wu, W., et al. (2019). Using machine learning to predict one-year cardiovascular events in patients with severe dilated cardiomyopathy. *European Journal of Radiology*
- Ciecholewski, M. (2011). Support vector machine approach to cardiac spect diagnosis. In *International workshop on combinatorial image analysis* (Springer), 432–443
- Cikes, M., Sanchez-Martinez, S., Claggett, B., Duchateau, N., Piella, G., Butakoff, C., et al. (2019). Machine learning-based phenogrouping in heart failure to identify responders to cardiac resynchronization therapy. *European journal of heart failure* 21, 74–85
- Coenen, A., Kim, Y.-H., Kruk, M., Tesche, C., De Geer, J., Kurata, A., et al. (2018). Diagnostic accuracy of a machine-learning approach to coronary computed tomographic angiography–based fractional flow reserve: result from the machine consortium. *Circulation: Cardiovascular Imaging* 11, e007217
- Collewet, G., Strzelecki, M., and Mariette, F. (2004). Influence of mri acquisition protocols and image intensity normalization methods on texture classification. *Magnetic resonance imaging* 22, 81–91
- Conforti, D. and Guido, R. (2005). Kernel-based support vector machine classifiers for early detection of myocardial infarction. *Optimization Methods and Software* 20, 401–413
- Dewey, B. E., Zhao, C., Reinhold, J. C., Carass, A., Fitzgerald, K. C., Sotirchos, E. S., et al. (2019). Deepharmony: A deep learning approach to contrast harmonization across scanner changes. *Magnetic resonance imaging*
- Elalfi, A., Eisa, M., and Ahmed, H. (2013). Artificial neural networks in medical images for diagnosis heart valve diseases. *International Journal of Computer Science Issues (IJCSI)* 10, 83
- Gallardo-Estrella, L., Lynch, D. A., Prokop, M., Stinson, D., Zach, J., Judy, P. F., et al. (2016). Normalizing computed tomography data reconstructed with different filter kernels: effect on emphysema quantification. *European radiology* 26, 478–486
- Gopalakrishnan, V., Menon, P. G., and Madan, S. (2015). cmri-bed: A novel informatics framework for cardiac mri biomarker extraction and discovery applied to pediatric cardiomyopathy classification. *Biomedical engineering online* 14, S7
- Guner, L. A., Karabacak, N. I., Akdemir, O. U., Karagoz, P. S., Kocaman, S. A., Cengel, A., et al. (2010). An open-source framework of neural networks for diagnosis of coronary artery disease from myocardial perfusion spect. *Journal of Nuclear Cardiology* 17, 405–413

- Han, D., Lee, J. H., Rizvi, A., Gransar, H., Baskaran, L., Schulman-Marcus, J., et al. (2018). Incremental role of resting myocardial computed tomography perfusion for predicting physiologically significant coronary artery disease: a machine learning approach. *Journal of Nuclear Cardiology* 25, 223–233
- Hinzpeter, R., Wagner, M. W., Wurnig, M. C., Seifert, B., Manka, R., and Alkadhi, H. (2017). Texture analysis of acute myocardial infarction with ct: First experience study. *PloS one* 12, e0186876
- Ibáñez, B., James, S., Agewall, S., Antunes, M. J., Bucciarelli-Ducci, C., Bueno, H., et al. (2017). 2017 esc guidelines for the management of acute myocardial infarction in patients presenting with st-segment elevation. *Revista espanola de cardiologia (English ed.)* 70, 1082
- Isensee, F., Jaeger, P. F., Full, P. M., Wolf, I., Engelhardt, S., and Maier-Hein, K. H. (2017). Automatic cardiac disease assessment on cine-mri via time-series segmentation and domain specific features. In *International workshop on statistical atlases and computational models of the heart* (Springer), 120–129
- Işgum, I., Rutten, A., Prokop, M., and van Ginneken, B. (2007). Detection of coronary calcifications from computed tomography scans for automated risk assessment of coronary artery disease. *Medical physics* 34, 1450–1461
- Işgum, I., van Ginneken, B., and Olree, M. (2004). Automatic detection of calcifications in the aorta from ct scans of the abdomen1: 3d computer-aided diagnosis. *Academic radiology* 11, 247–257
- Jin, H., Heo, C., and Kim, J. H. (2019). Deep learning-enabled accurate normalization of reconstruction kernel effects on emphysema quantification in low-dose ct. *Physics in Medicine & Biology*
- Juarez-Orozco, L. E., Knol, R. J., Sanchez-Catasus, C. A., Martinez-Manzanera, O., van der Zant, F. M., and Knuuti, J. (2018). Machine learning in the integration of simple variables for identifying patients with myocardial ischemia. *Journal of Nuclear Cardiology* , 1–9
- Khened, M., Alex, V., and Krishnamurthi, G. (2017). Densely connected fully convolutional network for short-axis cardiac cine mr image segmentation and heart diagnosis using random forest. In *International Workshop on Statistical Atlases and Computational Models of the Heart* (Springer), 140–151
- Kolossváry, M., Karády, J., Szilveszter, B., Kitslaar, P., Hoffmann, U., Merkely, B., et al. (2017). Radiomic features are superior to conventional quantitative computed tomographic metrics to identify coronary plaques with napkin-ring sign. *Circulation: Cardiovascular Imaging* 10, e006843
- Kukar, M., Kononenko, I., Grošelj, C., Kralj, K., and Fettich, J. (1999). Analysing and improving the diagnosis of ischaemic heart disease with machine learning. *Artificial intelligence in medicine* 16, 25–50
- Kumar, V., Gu, Y., Basu, S., Berglund, A., Eschrich, S. A., Schabath, M. B., et al. (2012). Radiomics: the process and the challenges. *Magnetic resonance imaging* 30, 1234–1248
- Kurgan, L. A., Cios, K. J., Tadeusiewicz, R., Ogiela, M., and Goodenday, L. S. (2001). Knowledge discovery approach to automated cardiac spect diagnosis. *Artificial intelligence in medicine* 23, 149–169
- Kusunose, K., Abe, T., Haga, A., Fukuda, D., Yamada, H., Harada, M., et al. (2019). A deep learning approach for assessment of regional wall motion abnormality from echocardiographic images. *JACC: Cardiovascular Imaging*
- Lambin, P., Rios-Velazquez, E., Leijenaar, R., Carvalho, S., Van Stiphout, R. G., Granton, P., et al. (2012). Radiomics: extracting more information from medical images using advanced feature analysis. *European journal of cancer* 48, 441–446
- Larroza, A., López-Lereu, M. P., Monmeneu, J. V., Gavara, J., Chorro, F. J., Bodí, V., et al. (2018). Texture analysis of cardiac cine magnetic resonance imaging to detect nonviable segments in patients with chronic myocardial infarction. *Medical physics* 45, 1471–1480
- Leiner, T., Rueckert, D., Suinesiaputra, A., Baeßler, B., Nezafat, R., Išgum, I., et al. (2019). Machine learning in cardiovascular magnetic resonance: basic concepts and applications. *Journal of Cardiovascular Magnetic Resonance* 21, 61

- Lekadir, K., Albà, X., Pereañez, M., and Frangi, A. F. (2015). Statistical shape modeling using partial least squares: application to the assessment of myocardial infarction. In *Statistical Atlases and Computational Models of the Heart* (Springer), 130–139
- Leopold, J. A. and Loscalzo, J. (2018). Emerging role of precision medicine in cardiovascular disease. *Circulation research* 122, 1302–1315
- Lu, A., Dehghan, E., Veni, G., Moradi, M., and Syeda-Mahmood, T. (2018). Detecting anomalies from echocardiography using multi-view regression of clinical measurements. In *2018 IEEE 15th International Symposium on Biomedical Imaging (ISBI 2018)* (IEEE), 1504–1508
- Lubner, M. G., Smith, A. D., Sandrasegaran, K., Sahani, D. V., and Pickhardt, P. J. (2017). Ct texture analysis: definitions, applications, biologic correlates, and challenges. *Radiographics* 37, 1483–1503
- Mackin, D., Fave, X., Zhang, L., Fried, D., Yang, J., Taylor, B., et al. (2015). Measuring ct scanner variability of radiomics features. *Investigative radiology* 50, 757
- Madani, A., Ong, J. R., Tibrewal, A., and Mofrad, M. R. (2018). Deep echocardiography: data-efficient supervised and semi-supervised deep learning towards automated diagnosis of cardiac disease. *npj Digital Medicine* 1, 59
- Mannil, M., von Spiczak, J., Manka, R., and Alkadhi, H. (2018). Texture analysis and machine learning for detecting myocardial infarction in noncontrast low-dose computed tomography: unveiling the invisible. *Investigative radiology* 53, 338–343
- Mannil, M., von Spiczak, J., Muehlematter, U. J., Thanabalasingam, A., Keller, D. I., Manka, R., et al. (2019). Texture analysis of myocardial infarction in ct: Comparison with visual analysis and impact of iterative reconstruction. *European journal of radiology* 113, 245–250
- Mantilla, J., Garreau, M., Bellanger, J.-J., and Paredes, J. L. (2013). Machine learning techniques for lv wall motion classification based on spatio-temporal profiles from cardiac cine mri. In *2013 12th International Conference on Machine Learning and Applications* (IEEE), vol. 1, 167–172
- Mayerhoefer, M. E., Szomolanyi, P., Jirak, D., Berg, A., Materka, A., Dirisamer, A., et al. (2009). Effects of magnetic resonance image interpolation on the results of texture-based pattern classification: a phantom study. *Investigative radiology* 44, 405–411
- Moghaddasi, H., Nourian, S., and Nourian, S. (2016). Automatic assessment of mitral regurgitation severity based on extensive textural features on 2d echocardiography videos. *Computers in biology and medicine* 73, 47–55
- Moreno, A., Rodriguez, J., and Martínez, F. (2019). Regional multiscale motion representation for cardiac disease prediction. In *2019 XXII Symposium on Image, Signal Processing and Artificial Vision (STSIVA)* (IEEE), 1–5
- Nakada, A., Shiozaki, A., Hirano, Y., Uehara, H., and Masuyama, T. (2006). Using neural networks in color kinesis image process to automate diagnosis of cardiac disease. *Electronics and Communications in Japan (Part II: Electronics)* 89, 46–54
- Nakajima, K., Kudo, T., Nakata, T., Kiso, K., Kasai, T., Taniguchi, Y., et al. (2017). Diagnostic accuracy of an artificial neural network compared with statistical quantitation of myocardial perfusion images: a japanese multicenter study. *European journal of nuclear medicine and molecular imaging* 44, 2280–2289
- Nakajima, K., Okuda, K., Watanabe, S., Matsuo, S., Kinuya, S., Toth, K., et al. (2018). Artificial neural network retrained to detect myocardial ischemia using a japanese multicenter database. *Annals of nuclear medicine* 32, 303–310

- Narula, S., Shameer, K., Omar, A. M. S., Dudley, J. T., and Sengupta, P. P. (2016). Machine-learning algorithms to automate morphological and functional assessments in 2d echocardiography. *Journal of the American College of Cardiology* 68, 2287–2295
- Neisius, U., El-Rewaify, H., Nakamori, S., Rodriguez, J., Manning, W. J., and Nezafat, R. (2019a). Radiomic analysis of myocardial native t1 imaging discriminates between hypertensive heart disease and hypertrophic cardiomyopathy. *JACC: Cardiovascular Imaging*
- Neisius, U., Myerson, L., Fahmy, A. S., Nakamori, S., El-Rewaify, H., Joshi, G., et al. (2019b). Cardiovascular magnetic resonance feature tracking strain analysis for discrimination between hypertensive heart disease and hypertrophic cardiomyopathy. *PloS one* 14, e0221061
- Nyflot, M. J., Yang, F., Byrd, D., Bowen, S. R., Sandison, G. A., and Kinahan, P. E. (2015). Quantitative radiomics: impact of stochastic effects on textural feature analysis implies the need for standards. *Journal of medical imaging* 2, 041002
- Park, J. E. and Kim, H. S. (2018). Radiomics as a quantitative imaging biomarker: practical considerations and the current standpoint in neuro-oncologic studies. *Nuclear medicine and molecular imaging* 52, 99–108
- Puyol-Antón, E., Ruijsink, B., Gerber, B., Amzulescu, M. S., Langet, H., De Craene, M., et al. (2018). Regional multi-view learning for cardiac motion analysis: Application to identification of dilated cardiomyopathy patients. *IEEE Transactions on Biomedical Engineering* 66, 956–966
- Ritchie, H. and Roser, M. (2018). Our world in data. *Causes of death, published February*
- Rohé, M.-M., Duchateau, N., Sermesant, M., and Pennec, X. (2015). Combination of polyaffine transformations and supervised learning for the automatic diagnosis of lv infarct. In *Statistical Atlases and Computational Models of the Heart* (Springer), 190–198
- Sacha, J. P., Goodenday, L. S., and Cios, K. J. (2002). Bayesian learning for cardiac spect image interpretation. *Artificial Intelligence in Medicine* 26, 109–143
- Saha, A., Harowicz, M. R., and Mazurowski, M. A. (2018). Breast cancer mri radiomics: An overview of algorithmic features and impact of inter-reader variability in annotating tumors. *Medical physics* 45, 3076–3085
- Samala, R. K., Chan, H.-P., Hadjiiski, L., Paramagul, C., Helvie, M. A., and Neal, C. H. (2019). Homogenization of breast mri across imaging centers and feature analysis using unsupervised deep embedding. In *Medical Imaging 2019: Computer-Aided Diagnosis* (International Society for Optics and Photonics), vol. 10950, 1095020
- Shafiq-ul Hassan, M., Zhang, G. G., Latifi, K., Ullah, G., Hunt, D. C., Balagurunathan, Y., et al. (2017). Intrinsic dependencies of ct radiomic features on voxel size and number of gray levels. *Medical physics* 44, 1050–1062
- Shah, S. J., Katz, D. H., Selvaraj, S., Burke, M. A., Yancy, C. W., Gheorghide, M., et al. (2015). Phenomapping for novel classification of heart failure with preserved ejection fraction. *Circulation* 131, 269–279
- Shibutani, T., Nakajima, K., Wakabayashi, H., Mori, H., Matsuo, S., Yoneyama, H., et al. (2019). Accuracy of an artificial neural network for detecting a regional abnormality in myocardial perfusion spect. *Annals of nuclear medicine* 33, 86–92
- Snaauw, G., Gong, D., Maicas, G., van den Hengel, A., Niessen, W. J., Verjans, J., et al. (2019). End-to-end diagnosis and segmentation learning from cardiac magnetic resonance imaging. In *2019 IEEE 16th International Symposium on Biomedical Imaging (ISBI 2019)* (IEEE), 802–805



- Sudarshan, V. K., Acharya, U. R., Ng, E., San Tan, R., Chou, S. M., and Ghista, D. N. (2016). An integrated index for automated detection of infarcted myocardium from cross-sectional echocardiograms using texton-based features (part 1). *Computers in biology and medicine* 71, 231–240
- Tabassian, M., Alessandrini, M., Herbots, L., Mirea, O., Pagourelas, E. D., Jasaityte, R., et al. (2017). Machine learning of the spatio-temporal characteristics of echocardiographic deformation curves for infarct classification. *The international journal of cardiovascular imaging* 33, 1159–1167
- Tabassian, M., Sunderji, I., Erdei, T., Sanchez-Martinez, S., Degiovanni, A., Marino, P., et al. (2018). Diagnosis of heart failure with preserved ejection fraction: machine learning of spatiotemporal variations in left ventricular deformation. *Journal of the American Society of Echocardiography* 31, 1272–1284
- To, C. and Pham, T. D. (2009). Analysis of cardiac imaging data using decision tree based parallel genetic programming. In *2009 Proceedings of 6th International Symposium on Image and Signal Processing and Analysis (IEEE)*, 317–320
- Tsai, D.-Y., Lee, Y., Sekiya, M., and Ohkubo, M. (2004). Medical image classification using genetic-algorithm based fuzzy-logic approach. *Journal of Electronic Imaging* 13, 780–789
- Ungru, K., Tenbrinck, D., Jiang, X., and Stypmann, J. (2014). Automatic classification of left ventricular wall segments in small animal ultrasound imaging. *Computer methods and programs in biomedicine* 117, 2–12
- Vidya, K. S., Ng, E., Acharya, U. R., Chou, S. M., San Tan, R., and Ghista, D. N. (2015). Computer-aided diagnosis of myocardial infarction using ultrasound images with dwt, glcm and hos methods: a comparative study. *Computers in biology and medicine* 62, 86–93
- Wilkins, E., Wilson, L., Wickramasinghe, K., Bhatnagar, P., Leal, J., Luengo-Fernandez, R., et al. (2017). European cardiovascular disease statistics 2017
- Wojnarski, C. M., Roselli, E. E., Idrees, J. J., Zhu, Y., Carnes, T. A., Lowry, A. M., et al. (2018). Machine-learning phenotypic classification of bicuspid aortopathy. *The Journal of thoracic and cardiovascular surgery* 155, 461–469
- Wolterink, J. M., Leiner, T., de Vos, B. D., van Hamersvelt, R. W., Viergever, M. A., and Išgum, I. (2016). Automatic coronary artery calcium scoring in cardiac ct angiography using paired convolutional neural networks. *Medical image analysis* 34, 123–136
- Wolterink, J. M., Leiner, T., Takx, R. A., Viergever, M. A., and Išgum, I. (2014). An automatic machine learning system for coronary calcium scoring in clinical non-contrast enhanced, ecg-triggered cardiac ct. In *Medical Imaging 2014: Computer-Aided Diagnosis* (International Society for Optics and Photonics), vol. 9035, 90350E
- Wolterink, J. M., Leiner, T., Viergever, M. A., and Išgum, I. (2017). Automatic segmentation and disease classification using cardiac cine mr images. In *International Workshop on Statistical Atlases and Computational Models of the Heart* (Springer), 101–110
- Wong, K. C., Tee, M., Chen, M., Bluemke, D. A., Summers, R. M., and Yao, J. (2016). Regional infarction identification from cardiac ct images: a computer-aided biomechanical approach. *International journal of computer assisted radiology and surgery* 11, 1573–1583
- Zhang, J., Gajjala, S., Agrawal, P., Tison, G. H., Hallock, L. A., Beussink-Nelson, L., et al. (2018). Fully automated echocardiogram interpretation in clinical practice: feasibility and diagnostic accuracy. *Circulation* 138, 1623–1635
- Zhang, L., Wahle, A., Chen, Z., Lopez, J. J., Kovarnik, T., and Sonka, M. (2017). Predicting locations of high-risk plaques in coronary arteries in patients receiving statin therapy. *IEEE transactions on medical imaging* 37, 151–161



- Zhang, N., Yang, G., Gao, Z., Xu, C., Zhang, Y., Shi, R., et al. (2019). Deep learning for diagnosis of chronic myocardial infarction on nonenhanced cardiac cine mri. *Radiology* 291, 606–617
- Zhao, B., Tan, Y., Tsai, W.-Y., Qi, J., Xie, C., Lu, L., et al. (2016). Reproducibility of radiomics for deciphering tumor phenotype with imaging. *Scientific reports* 6, 23428
- Zhao, B., Tan, Y., Tsai, W. Y., Schwartz, L. H., and Lu, L. (2014). Exploring variability in ct characterization of tumors: a preliminary phantom study. *Translational oncology* 7, 88
- Zheng, Q., Delingette, H., and Ayache, N. (2019). Explainable cardiac pathology classification on cine mri with motion characterization by semi-supervised learning of apparent flow. *Medical image analysis*
- Zreik, M., van Hamersvelt, R. W., Wolterink, J. M., Leiner, T., Viergever, M. A., and Išgum, I. (2018). A recurrent cnn for automatic detection and classification of coronary artery plaque and stenosis in coronary ct angiography. *IEEE transactions on medical imaging*
- Zwanenburg, A., Leger, S., Vallières, M., and Löck, S. (2016). Image biomarker standardisation initiative. *arXiv preprint arXiv:1612.07003*