

## Impacts of deep-sea mining on microbial ecosystem services<sup>2</sup>

Beth N. Orcutt <sup>1\*</sup> James A. Bradley,<sup>2</sup> William J. Brazelton <sup>3</sup> Emily R. Estes,<sup>4</sup>  
Jacqueline M. Goordial <sup>1,5</sup> Julie A. Huber <sup>6</sup> Rose M. Jones <sup>1,7</sup> Nagissa Mahmoudi <sup>8</sup>  
Jeffrey J. Marlow,<sup>9</sup> Sheryl Murdock <sup>10</sup> Maria Pachiadaki <sup>6</sup>

<sup>1</sup>Bigelow Laboratory for Ocean Sciences, East Boothbay, Maine

<sup>2</sup>Queen Mary University of London, London, UK

<sup>3</sup>School of Biological Sciences, University of Utah, Salt Lake City, Utah

<sup>4</sup>International Ocean Discovery Program, Texas A&M University, College Station, Texas

<sup>5</sup>Division of Biology and Paleo Environment, Lamont-Doherty Earth Observatory, Columbia University, Palisades, New York

<sup>6</sup>Woods Hole Oceanographic Institution, Woods Hole, Massachusetts

<sup>7</sup>Department of Soil, Water and Climate, University of Minnesota, St. Paul, Minnesota

<sup>8</sup>Department of Earth & Planetary Science, McGill University, Montreal, Quebec, Canada

<sup>9</sup>Department of Organismic & Evolutionary Biology, Harvard University, Cambridge, Massachusetts

<sup>10</sup>School of Earth and Ocean Sciences, University of Victoria, Victoria, British Columbia, Canada

### Abstract

Interest in extracting mineral resources from the seafloor through deep-sea mining has accelerated in the past decade, driven by consumer demand for various metals like zinc, cobalt, and rare earth elements. While there are ongoing studies evaluating potential environmental impacts of deep-sea mining activities, these focus primarily on impacts to animal biodiversity. The microscopic spectrum of seafloor life and the services that this life provides in the deep sea are rarely considered explicitly. In April 2018, scientists met to define the microbial ecosystem services that should be considered when assessing potential impacts of deep-sea mining, and to provide recommendations for how to evaluate and safeguard these services. Here, we indicate that the potential impacts of mining on microbial ecosystem services in the deep sea vary substantially, from minimal expected impact to loss of services that cannot be remedied by protected area offsets. For example, we (1) describe potential major losses of microbial ecosystem services at active hydrothermal vent habitats impacted by mining, (2) speculate that there could be major ecosystem service degradation at inactive massive sulfide deposits without extensive mitigation efforts, (3) suggest minor impacts to carbon sequestration within manganese nodule fields coupled with potentially important impacts to primary production capacity, and (4) surmise that assessment of impacts to microbial ecosystem services at seamounts with ferromanganese crusts is too poorly understood to be definitive. We conclude by recommending that baseline assessments of microbial diversity, biomass, and, importantly, biogeochemical function need to be considered in environmental impact assessments of deep-sea mining.

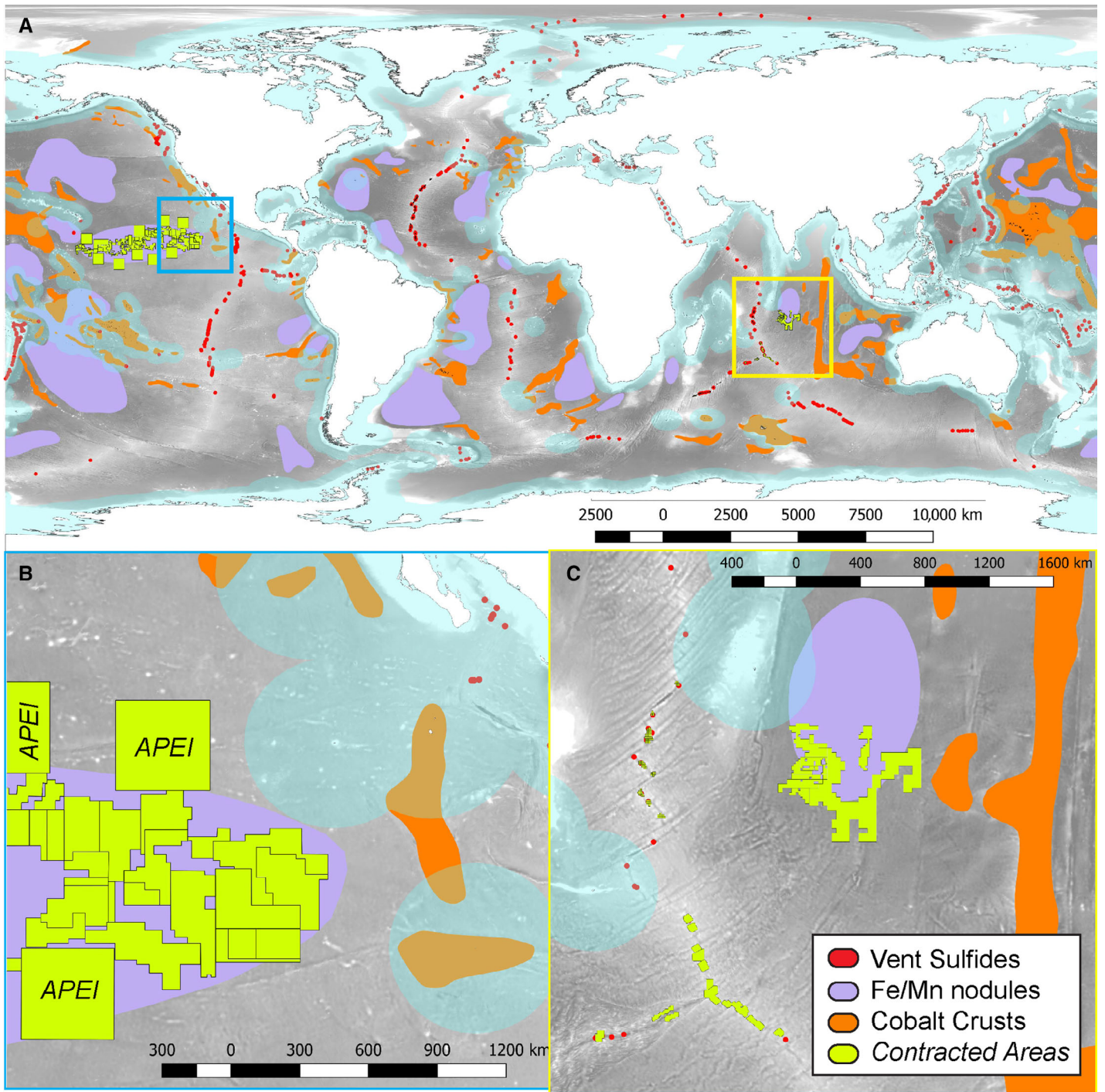
\*Correspondence: borcutt@bigelow.org

This is an open access article under the terms of the Creative Commons Attribution-NonCommercial License, which permits use, distribution and reproduction in any medium, provided the original work is properly cited and is not used for commercial purposes.

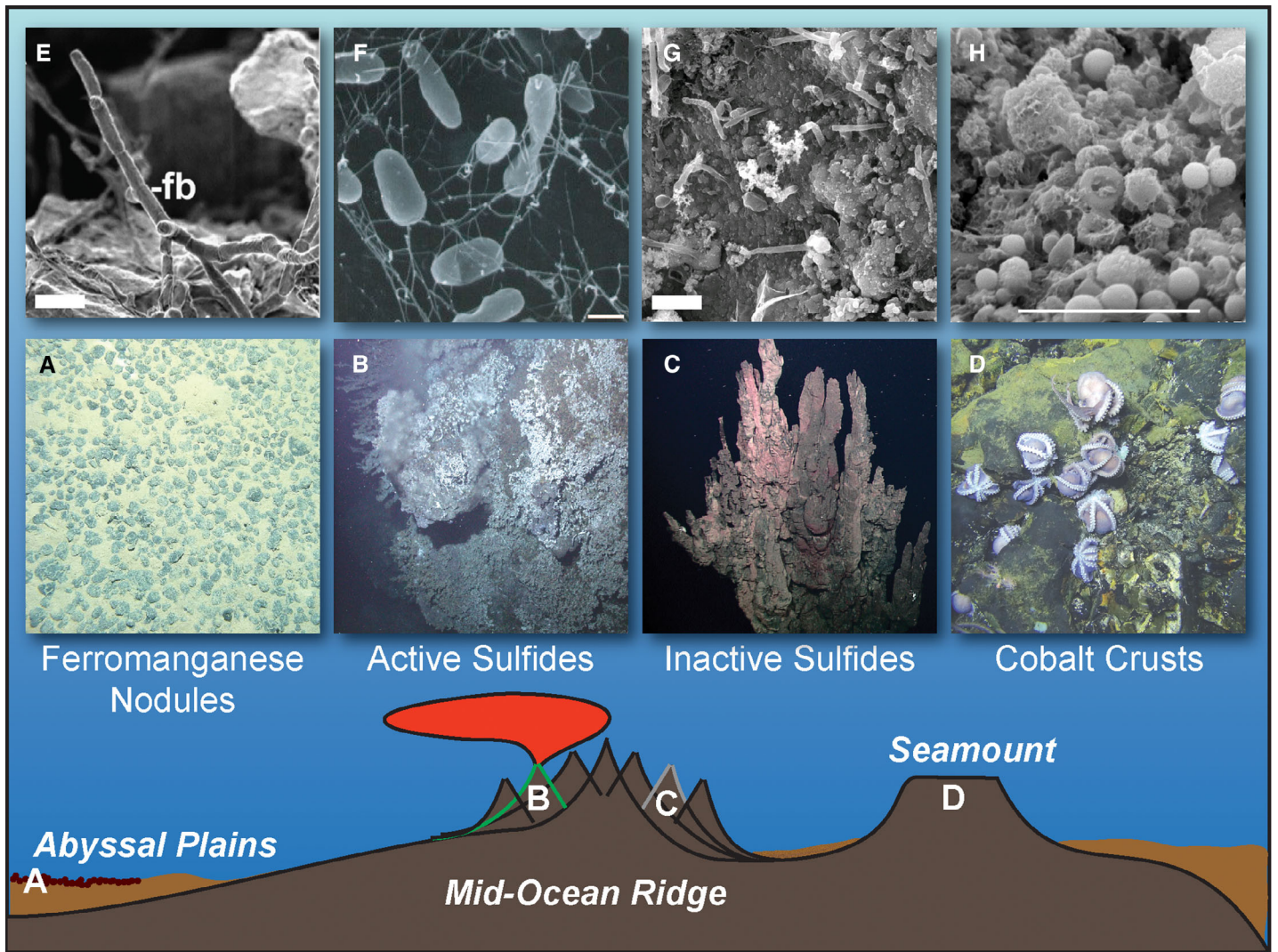
Additional Supporting Information may be found in the online version of this article.

Author Contribution Statement: R.M.J. constructed the maps in Fig. 1, J.J.M. developed the data set for Fig. 4 and the Supporting Information, J.A.H. contributed to Fig. 2, and B.N.O. created the remaining figures. B.N.O. wrote the manuscript with input from all authors.

With increasing demand for rare and critical metals—such as cobalt, copper, manganese, tellurium, and zinc—there is increasing interest in mining these resources from the seafloor (Hein et al. 2013; Wedding et al. 2015; Thompson et al. 2018). The primary mineral resources in the deep sea that attract attention fall into four categories (Figs. 1, 2): (1) massive sulfide deposits created at active high-temperature hydrothermal vent systems along mid-ocean ridges, back-arc spreading centers, and volcanic arcs, from the mixing of mineral-rich, advecting hydrothermal fluids with bottom seawater; (2) similar deposits at inactive hydrothermal vent sites, where fluid advection has ceased but mineral deposits remain; (3) polymetallic nodules that form on the seafloor of the open ocean



**Fig. 1.** Locations of deep-sea mineral resources and current exploration contract zones. In all panels, areas of the seafloor within nations’ EEZs highlighted in light blue boundaries along coastlines, whereas remaining seafloor within “the Area” not shaded. **(A)** Global seafloor distribution of hydrothermal vent (active and inactive) polymetallic sulfide deposits (red), ferromanganese nodules (purple), and cobalt crusts on seamounts (orange) overlain by current exploration contract zones (green) issued by the International Seabed Authority (ISA). **(B)** Highlight of exploration contracts and APEIs in the eastern region of the Clarion Clipperton Zone and the East Pacific Rise vent locations on the western edge of Mexico, as shown by the blue bounding box in **(A)**. **(C)** Highlight of vent sites and contracted zones along part of the Southwest Indian Ridge and nodule exploration contracts in the Indian Ocean, as shown by the yellow bounding box in **(A)**. Underlying maps generated with data from the U.S. National Oceanographic and Atmospheric Administration (NOAA; coastlines), the General Bathymetric Chart of the Oceans (GEBCO) hosted by the British Oceanographic Data Centre (gridded bathymetry data), and the marineregions.org database (EEZ). Shape file information for nodules and cobalt crusts from Hein et al. (2013), for polymetallic sulfides InterRidge Vents Database version 3.4 hosted by the Institut de Physique du Globe de Paris (credit S. Beaulieu, Woods Hole Oceanographic Institution, 2015, funded by the U.S. National Science Foundation 1202977), and for ISA exploration contract areas from the Deep Sea Mining Watch project version 1.2 hosted by the University of California Santa Barbara Benioff Ocean Initiative.



**Fig. 2.** Types of deep-sea habitats with mineable resources. **(A)** Ferromanganese nodules on the sediment of abyssal plains, image modified from Wikipedia courtesy Abramax. **(B)** Active hydrothermal vent sulfide deposits from the Juan de Fuca Ridge, with chemosynthetic animals colonizing the sulfide surface around areas of fluid venting. Photo courtesy of AT15-34 cruise chief scientist Ray Lee, Western Washington University, U.S. National Science Foundation, HOV *Alvin* dive 4420, 2008, © Woods Hole Oceanographic Institution. **(C)** Inactive hydrothermal vent sulfide deposits from the Galapagos Rift. Image by ROV *Hercules* courtesy of NOAA Okeanos Explorer Program 2011 Galapagos Rift Expedition. **(D)** Cobalt-rich crusts that form on seafloor basalts on seamounts, which can be areas of diffusive hydrothermal fluid flow and sites of deep-sea animal brooding. Photo courtesy of AT26-24 Chief Scientist Geoff Wheat, University of Alaska Fairbanks, U.S. National Science Foundation, HOV *Alvin*, 2014, © Woods Hole Oceanographic Institution. **(E–H)** Examples of microscopic organisms living on these resources. **(E)** Microbial filaments on a manganese nodule, modified from Wang et al. (2009); scale bar = 1  $\mu\text{m}$ . **(F)** *Desulfurobacterium* bacteria isolated from a deep-sea hydrothermal vent at Axial Volcano, courtesy of Julie A. Huber; scale bar = 1  $\mu\text{m}$ . **(G)** Rod-shaped cells on inactive sulfides from the East Pacific Rise, modified from Toner et al. (2013) and courtesy of Brandy Toner; scale bar = 2  $\mu\text{m}$ . **(H)** Ferromanganese crust on seafloor basalt from the East Pacific Rise, modified from Santelli et al. (2008) and courtesy of Cara Santelli; scale bar = 10  $\mu\text{m}$ . Cartoon schematic modified from Schrenk et al. (2009) with permission.

(often referred to as manganese nodules); and (4) other polymetallic crusts that can form in the deep sea at seamounts (often referred to as cobalt crusts). Current areal estimates of these resources range from 38 million  $\text{km}^2$  for ferromanganese nodules, 3.2 million  $\text{km}^2$  for massive sulfides (combined active and inactive), and 1.7 million  $\text{km}^2$  for polymetallic crusts on seamounts (Petersen et al. 2016). Some of these resources occur within the exclusive economic zones (EEZs) of coastal

nations, while others occur in international waters. In some EEZs continental shelf sediments, additional commercial interests include diamond and phosphorite deposits. Since these fall exclusively within national jurisdictions, they will not be a focus of this article, although mining activities for these deposits are currently occurring (Miller et al. 2018).

For seabed mineral resources in international waters beyond national jurisdiction (referred to as “the Area”), access is only

possible through the International Seabed Authority (ISA) as established in the United Nations Convention on the Law of the Sea (UNCLOS). The ISA awards contracts through sponsoring States to authorized contractors, permitting them to explore resource opportunities in a designated area. This contracting is done following regulations established under the Mining Code, which were established in 2000 and updated in 2013 for polymetallic nodules, in 2010 for polymetallic sulfides, and in 2012 for cobalt-rich crusts. More than 1.3 million km<sup>2</sup> of international seabed is currently set aside in 29 exploration contracts in the Pacific and Indian Oceans and along the Mid-Atlantic Ridge (Fig. 1); another 1 million km<sup>2</sup> of seabed has been licensed or applied for in waters under national jurisdiction (Cuyvers et al. 2018). Currently, no country has an exploitation license to actively mine these resources in the Area, but the ISA is developing international regulations to govern future exploitation activities within the Area (International Seabed Authority 2012, 2013b). A few states (e.g., Japan, Papua New Guinea) have already begun allowing resource exploration and extraction testing in their national waters (Kyodo News 2017). Companies are developing and testing prototype mining equipment for this purpose. Proponents of deep-sea mining argue that resource extraction from the deep-sea is more environmentally friendly than mining on land for the same metals, but the environmental impacts of these efforts are currently poorly understood, as discussed below. The UNCLOS stipulates that deep-sea mining related activities on the international seabed within the Area must be carried out for the benefit of mankind (UNCLOS Articles 136, 137, and 140; Cuyvers et al. 2018). Therefore, unbiased assessments of the possible impacts of deep-sea mining is required.

Mineral resources on the seabed are also centerpieces of deep-sea ecosystems, functioning as refugia and stepping stones for animal biodiversity. For example, polymetallic crusts in the deep-sea serve as hard substratum for the attachment of sessile animal communities such as sponges, or for egg-laying for mobile species like octopus which do not anchor in the soft sediment surrounding the deposits (Purser et al. 2016; Simon-Lledó et al. 2019). As another example, unique animal communities have evolved to survive under the high temperature and extreme chemical conditions found at hydrothermal vents where massive sulfide deposits form from the interaction of these hot, mineral-rich fluids with surrounding cold seawater, as described in “Active vents and active vent fields” section. Thus, these mineral deposits often host “hotspots” of animal life compared to the surrounding seafloor. There have been several recent studies and syntheses on the potential impacts of mining of these mineral resources on animal life (Boschen et al. 2013; Vanreusel et al. 2016; Jones et al. 2017; Suzuki et al. 2018; Christiansen et al. In press).

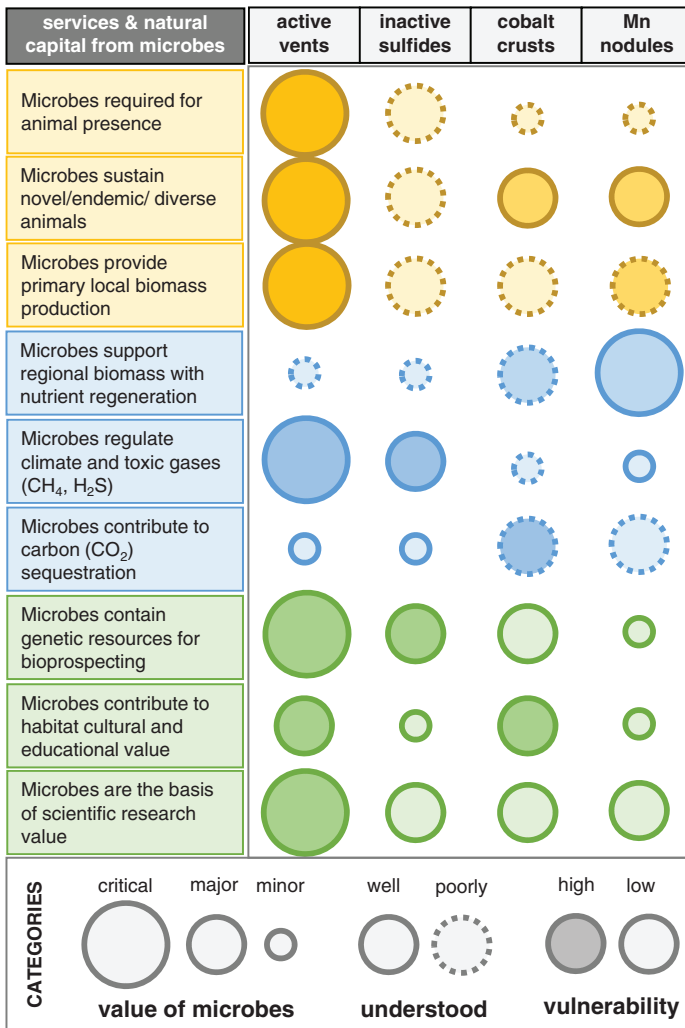
In addition to the visible animal life associated with these resources, diverse *microscopic* life also flourishes in these systems. This nearly invisible microbial life is responsible for the majority of the chemical cycling that occurs in these habitats, providing essential ecosystem services for the deep-sea environments

(Thurber et al. 2014). Microbial life, particularly from the Bacteria and Archaea domains of life, represents a large and diverse genetic reservoir with mostly unexplored potential for medical and commercial applications. Despite the importance of the microscopic component of life to ecosystem services in the deep sea, this category has been somewhat overlooked in planning related to assessing and evaluating possible environmental impacts related to deep-sea mining. Inclusion of microbial information (namely, community structure and biomass) into environmental impact assessment recommendations only began in 2013 (International Seabed Authority 2013a), with a recent expanded recommendation to include “diversity, abundance, biomass, community-level analysis, connectivity, trophic relationships, resilience, ecosystem function, and temporal variability” of microbial communities arising in the 2018 draft regulations for exploitation (International Seabed Authority 2018b).

To address this gap in understanding and provide recommendations to policy makers about the possible impacts to deep-sea ecosystem services provided explicitly by microscopic life, a workshop of experts in deep-sea microbial ecology and geochemistry convened in April 2018 to discuss these topics, with support from the Center for Dark Energy Biosphere Investigations, the Deep Carbon Observatory, and the Bigelow Laboratory for Ocean Sciences. The outcomes of this workshop are presented here. We provide a brief overview of the four mineral resource types, focusing on descriptions of the microbial ecosystems that they support, the ecosystem services that these microbial communities provide, and an assessment of possible impacts to these services from mining activity. We also provide recommendations for baseline assessment and monitoring to evaluate the impact of mining activities on microbial ecosystem services.

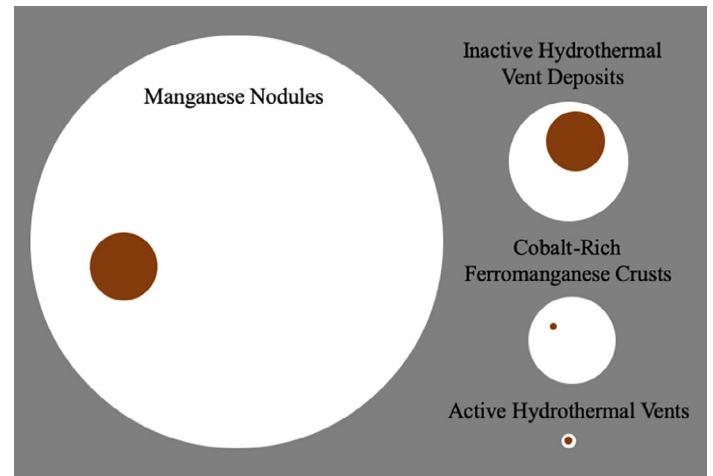
### ***Evaluating the potential impact of deep-sea mining on ecosystem services from microorganisms***

Seventy percent of the solid exterior of Earth lies under the ocean (Orcutt et al. 2011). While our perceptions of life on Earth are skewed by our daily encounter with photosynthesis-supported life on land, the deep sea is a fundamentally different environment where sunlight does not penetrate. In deep-sea environments, energy for life comes in two forms. The first is through the respiration of organic matter delivered either in dissolved or particulate form (ranging from small particles up to large “food falls” like dead whales) from the sunlit surface world that is ultimately sourced from photosynthesis. The second source of energy is through generation of new organic matter (i.e., primary production) from a process known as *chemosynthesis*, where energy from inorganic chemical reactions is used to convert dissolved carbon dioxide into the organic molecules (sugars, fats, proteins, etc.) that are the building blocks of life (Jannasch and Wirsén 1979). The ratio of these two energy sources can vary significantly in the deep sea, with habitats like hydrothermal vents offering a figurative buffet of chemical reactions that can fuel abundant chemosynthesis-driven microbial



**Fig. 3.** A qualitative assessment of the ecosystem services and natural capital from microorganisms in deep-sea habitats with mineable resources. The size, outline, and shading of symbols reflects the value that microbes support in each system, how well microbial aspects of the ecosystem are understood, and the vulnerability of microbial aspects to mining impacts, respectively, per the legend.

life. Similarly, in the low-temperature mineral deposits like ferromanganese nodules and cobalt crusts, chemosynthetic processes also occur (Orcutt et al. 2015), although the ratio of the two energy sources is poorly constrained. In hydrothermal ecosystems, chemosynthetic microbial life can form the base of the food web, as discussed below in “Active vents and active vent fields” section. Thus, disruption to the supply of chemical energy sources can have consequences for the amount and type of life that can be supported (Fig. 3), which can have cascading impacts to higher trophic levels of life dependent on this microbial base of the food web. The following sections describe how mining activities can upset the chemical energy supplies that fuel microbial life in these ecosystems, and how this can result in a disruption of the ecosystem services that microscopic life provides (Fig. 3).



**Fig. 4.** A schematic depiction of the relative estimated sizes of the potential deep-sea resource types in comparison to the area already under contract/management. White circles represent the relative area of the potentially exploitable resource (Petersen et al. 2016), and red circles signify the fraction of that area that is subject to current or pending exploration licenses (Hein et al. 2013). See Supporting Information Data set 1 for more details.

**Active vents and active vent fields**

Hydrothermal vents are among the most dynamic environments on Earth, where hot, chemically reduced fluids come into contact with cold, oxidized seawater, leading to the precipitation of metal-rich deposits on and beneath the seafloor surrounding these vents (Fig. 2). The high flux of metal-rich fluids mixing with cold, oxic seawater is a natural mechanism for accumulating iron, copper, zinc, and other economically viable elements within metal-sulfide rich mineral deposits, which makes these areas conducive to supporting chemosynthetic life as well as being attractive targets for mining.

Any given vent ecosystem might only be the approximate size of a football field (i.e., roughly 50 m wide × 100 m in length), with a handful of 5–10 m diameter concentrated deposits within that footprint, or alternatively with the entire area consisting entirely of massive sulfide. Individual vent fields can be separated by tens to hundreds of kilometers, depending on the geological setting (Hannington et al. 2011). Inactive sulfide-rich mineral deposits often surround active vents where mineral deposition is occurring, in a formation processes that can take thousands of years (Jamieson et al. 2013). The combined global footprint of all active vent ecosystems is estimated to be up to 50 km<sup>2</sup> (Fig. 4), which is < 0.00001% of the planet’s surface (Van Dover et al. 2018). Because of the difficulty in separating active from inactive vent sites (see Fig. 4 and Supporting Information), the total amount of mineable resources resulting from high temperature hydrothermal activity is covered in the next section on inactive sulfides.

From their first discovery in the late 1970s (Corliss et al. 1979), hydrothermal vents have attracted widespread public attention because they support unique and abundant animals that thrive

in these systems because of symbioses with chemosynthetic microorganisms (Dubilier et al. 2008; Sievert and Vetriani 2012). Geological and geochemical heterogeneity of vent fields leads to localized differences in fluid and deposit chemistry (Fouquet et al. 2010; German et al. 2016), which translates to animal endemism and biodiverse animal populations (Van Dover 2000; Van Dover et al. 2018). Changes to hydrothermal venting chemistry or intensity could have repercussions on the types of microbial life that can exist, and therefore on the animals that can be supported.

#### **Possible impacts to biomass, primary production, and microbial diversity at active vents**

Microbes inhabit nearly every niche associated with active hydrothermal systems including the rocks and fluids in the seafloor, sulfide chimney walls and surfaces, and in animal assemblages as internal and external symbionts (Fisher et al. 2007; Dubilier et al. 2008; Schrenk et al. 2009). Microbes growing on and within hydrothermal chimneys often produce thick biofilm mats easily visible to the naked eye, and even the extreme zones of high-temperature chimneys where temperatures up to 122°C host millions of microbial cells per gram of chimney material (Schrenk et al. 2003; Han et al. 2018). Nevertheless, the majority of microbial biomass in hydrothermal systems probably resides in the porous seafloor underlying the chimneys. The amount of microbial biomass in the seafloor of active hydrothermal vent systems is poorly constrained, though, due to difficulties in accessing this environment. Models of fluid circulation that assume a temperature limit of life of 122°C (Takai et al. 2008) as the main limitation to life yield a wide range of biomass estimates depending on the depth of fluid circulation within the seafloor (Lowell et al. 2015), which can range from a few centimeters to the full thickness of the highly permeable basalt layer (~ 500 m; Orcutt et al. 2011). Therefore, mining activities risk removing the bulk of microbial biomass in areas where the habitable crustal area is thin. Without being able to directly observe and sample this microbial habitat, the diffuse fluids exiting cracks in the seafloor are considered to be windows into the subsurface of active vent systems (Deming and Baross 1993; Huber and Holden 2008). Diffuse fluids contain active microbial cells that are in one to two orders of magnitude greater abundance than that of the surrounding seawater (Karl et al. 1980; Huber et al. 2002; Meyer et al. 2013) with diverse metabolic capacities that affect global chemical cycling of carbon, nitrogen, iron, and sulfur (Mehta and Baross 2006; Wankel et al. 2011; Holden et al. 2012; Bourbonnais et al. 2014; Fortunato et al. 2018).

The physiologically diverse microorganisms inhabiting active vent fields are considered to be fast growing and highly productive with an annual global production of biomass that is estimated to reach 1.4 Tg carbon, significantly influencing deep-sea chemical cycling (McNichol et al. 2018). Thus, despite the small size of active vent fields, they are productivity hotspots in an otherwise energy-starved deep sea

(McNichol et al. 2018). As primary producers in the ecosystem, microbes support nearly all life at vents, from microbial consumers to the abundant and charismatic animals (Sievert and Vetriani 2012). Animals can benefit from microbial primary productivity directly by harboring endosymbionts (e.g., tube worms, mussels, and clams) or indirectly by grazing microbial mats (e.g., *Rimicaris* shrimp) (Dubilier et al. 2008). Therefore, a major disruption of the chemical conditions that permit microbial chemosynthesis could have devastating consequences for all animals in that ecosystem.

Beyond their role in supporting primary productivity through chemosynthesis, many microbes in hydrothermal ecosystems play essential roles for animals by providing cues for larvae to settle (O'Brien et al. 2015). Microbial mats create barriers that slow the release of diffuse fluids and concentrate the energy-rich chemicals used in chemosynthesis. Growth of the microbial mat attracts microscopic and macroscopic grazers and traps more fluids, resulting in a rich ecosystem that supports dense and diverse assemblages of animals and microbes (Fisher et al. 2007). The concentration of energy and nutrients in complex, microbially created habitats with strong spatial gradients fosters the evolution of highly diverse microbial communities, making hydrothermal vent systems hotspots of microbial diversity on the seafloor (Campbell et al. 2006; Schrenk et al. 2009; Olins et al. 2013; Meier et al. 2017).

In addition to the microscopic Bacteria and Archaea that are the base of the food web, hydrothermal systems also host abundant microscopic Eukarya, including protists and fungi (Edgcomb et al. 2002; López-García et al. 2007; Murdock and Juniper 2019), as well as viruses (Ortmann and Suttle 2005; Williamson et al. 2008; Anderson et al. 2011; He et al. 2017). The diversity, distribution, and ecological roles of both groups are poorly constrained. Therefore, although hydrothermal systems are arguably one of the better studied deep-sea environments (see Supporting Information), there is still much to learn about their microbial communities and their role in maintaining ecosystem functions.

In summary, microbial life at active hydrothermal vents are the dominant base of the food web at these sites, supporting abundant and diverse animal life at distinct “oases” on the seafloor. These microbial ecosystems comprise abundant standing stock of life that is diverse and highly productive, fueled by the abundant chemical energy supplies in these active vent systems. Mining activities near active vents could disrupt the nature of fluid flow, and therefore the availability of chemical energy to these ecosystems, potentially causing a cascade effect on the size, production, and diversity of these ecosystems (Fig. 3) (Van Dover et al. 2018).

#### **Potential loss of genetic resources from active vent ecosystems**

In addition to being biological hot spots, hydrothermal vents are also targets for natural products discovery owing to the unique genetic resources that some of the microbes

contain (Thornburg et al. 2010). According to the Convention on Biological Diversity, the term “genetic resources” is defined as genetic material (i.e., any material of plant, animal, microbial, or other origin containing functional units of heredity) of actual or potential value. They may be used in biotechnological development of pharmaceutical drugs, research-based enzymes, food processing enzymes, cosmetic products, and other potential applications. Natural products from marine animals and microbes are already being marketed as anticancer and antiviral drugs as well as various “cosmeceuticals”—cosmetic products with medicinal properties (Martins et al. 2014). For example, a novel benzoquinone compound isolated from a thermophilic bacterium from a deep-sea hydrothermal vent had antitumor activity by triggering cell death of cancer cells (Xu et al. 2017), and recently a novel antibiotic was identified from a vent microorganism (Shi et al. 2017). DNA polymerases Vent<sup>®</sup> and Deep Vent<sup>®</sup> (New England Biolabs), both isolated from hyperthermophilic vent microorganisms (Lundberg et al. 1991; Kong et al. 1993), are marketed for research applications in molecular biology. Cosmetics such as Abyssine<sup>™</sup> (of Lucas Meyer Cosmetics) and RefirMAR<sup>®</sup> (of BIOALVO, Lisbon, Portugal) capitalize on excretions and internal proteins from hydrothermal vent bacteria and are marketed as reducing irritation in sensitive skin and reducing wrinkles (Martins et al. 2014). Numerous additional bioactive compounds from hydrothermal vent microorganisms are in research and development phases, and awareness of the potential of hydrothermal vents, other extreme environments, and the deep seafloor in general, as sources of natural products is growing (Navarri et al. 2016; Zhang et al. 2018). The prevalence of symbiotic relationships among hydrothermal vent species may also be a source of untapped potential given that some bioactive compounds isolated from marine animals have now been attributed to their microbial symbionts (Piel 2009; Penesyan et al. 2010).

Because each active vent site most likely contains endemic microbial species that are unique to the particular environmental conditions at that site (e.g., Huber et al. 2010), disruption of any vent site is likely to have some level of negative impacts on humanity’s ability to discover and utilize these genetic resources. The ability of these unique microbial ecosystems to reset after anthropogenic disturbance is poorly known, although there is evidence of recovery after natural disturbances such as volcanic eruptions (Opatkiewicz et al. 2009; Fortunato et al. 2018), so it is not clear if these impacts would be permanent, long-lasting, or ephemeral (Fig. 3). As only a few deep-sea vent sites have been studied in detail over time to know how their microbial diversity and genetic potential vary, a primary concern about mining of active vents systems is that their unique biodiversity and genetic resources could be lost before they are ever discovered (Van Dover et al. 2018).

#### ***Impacts on other microbial ecosystem services at active vents***

In addition to the metals that are sourced from hydrothermal vents, other reducing substrates such as methane—a

potent greenhouse gas—are sometimes highly enriched at active vent sites (Holden et al. 2012). Some specialized microbes use methane as their primary energy source and convert it into the less potent greenhouse gas carbon dioxide. Microbial consumption of methane and other chemicals has a measurable impact on the flux of these chemicals from hydrothermal systems into the ocean (Wankel et al. 2011, 2012), but more exploration of these systems is required for accurate estimates of their global contribution to the carbon cycle. Irrespective of its global significance, disruption of the vigorous microbial activity in hydrothermal systems is likely to have unpredictable consequences for nearby deep-sea habitats, which may be exposed to chemicals such as methane, hydrogen, and hydrogen sulfide that were previously removed in the vents (Fig. 3). One recent study from a methane seep identified that it could take years for a system to recover previous microbial methane consumption activity following a disturbance (Ruff et al. 2019).

Active vent systems also have incalculable value as representations of habitats that were likely to be prevalent on the ancient Earth and perhaps even acted as the cradle for the evolution of microbial life (Baross and Hoffman 1985; Martin et al. 2008). Similar environmental conditions that promote vigorous microbial activity in vents today could have also promoted the origin and early evolution of life on ancient Earth (e.g., Baaske et al. 2007). Furthermore, the isolation of deep-sea vents from the surface would have enabled them to act as refugia for early life-forms when conditions at the surface of the planet were not hospitable (Nisbet and Sleep 2001). Many of the enzymes and metabolic pathways used by vent microbes today appear to contain clues about the nature of the first biological molecules (Russell and Martin 2004) and key evolutionary milestones (Nasir et al. 2015). Therefore, the microbial diversity of active vents is not only important for modern ecosystem functions but also as natural wonders and precious cultural and educational resources that connect us to our ancient origins on this planet (Fig. 3).

Finally, it must be emphasized that the majority of microbial life at hydrothermal vents has not been explored, despite increasing improvements in access to the deep ocean and new analytical tools (Xie et al. 2011; Fortunato and Huber 2016; Fortunato et al. 2018). Therefore, many of the ecosystem services that microbes provide in these ecosystems are not yet known to science, and thus, the cultural heritage and educational services that active hydrothermal vents provide, both known and unknown, could be lost from mining activities.

In summary, the microbial ecosystem services described above (Fig. 3) highlight the importance of active hydrothermal vents to the broader deep-sea ecosystem and to future discoveries and bioprospecting that may benefit mankind. Furthermore, considerable uncertainty remains about the vulnerability and recoverability of microbial communities and their ecosystem services, so precaution is a prudent approach to prevent net loss (Donohue et al. 2016). In this context, we argue

that active vent systems should not be mined in order to preserve microbial ecosystem services for the benefit of mankind. This argument parallels recommendations made elsewhere (IUCN 2016; OECD 2016; Cuyvers et al. 2018; Niner et al. 2018; Van Dover et al. 2018). Given this stance, it is of concern that a large fraction of known active vents is within areas of the international seabed that have already been contracted for exploration and possible exploitation (Figs. 3, 4). A recent study modeled the efficacy of different sizes and distributions of areas of particular environmental interest (APEIs) protected from mining in active vent systems (Dunn et al. 2018); we encourage expanding this approach to explicitly consider microbial ecosystem services and how and if they would be mitigated with this approach.

### **Inactive vent fields with massive sulfide deposits**

Inactive vent fields are the remnants of prior active hydrothermal circulation (Fig. 2). Current volumetric estimates and ore percentages of seafloor massive sulfide deposits approximate those of terrestrial ores, though the size of individual deposits is up to 20 Mt as opposed to 50–60 Mt for terrestrial equivalents (Hoagland et al. 2010; Hannington et al. 2011; Petersen et al. 2016). Ten percent of known deposits are above the current 2 Mt threshold of economic interest (Petersen et al. 2016). Moreover, mineral content, and therefore economic value, also varies greatly between and within deposits, with those of largest volume not necessarily being the most valuable (Bischoff et al. 1983; Boschen et al. 2013; Petersen et al. 2016; Juliani and Ellefmo 2018; Pedersen et al. 2018). Due to uncertainties in the extent and metal content from insufficient data, these figures are rough estimates (Hannington et al. 2011; Pedersen et al. 2018). Also, they do not distinguish between active and inactive hydrothermal vent fields, which could differ greatly in the challenges they present to mining operations and in the potential impacts to biological communities.

Inactive vent fields may be more amenable to mining operations than active vents due to their larger size and absence of high-temperature acidic fluids. A complication, however, is that systems with no observable surficial venting may reveal underlying activity when disturbed by mining. Individual quiescent chimneys in a still-active vent fields are not a truly inactive hydrothermal system. Any indication of even minor venting of warm fluid could be indicative of high temperature fluids at depth. Information is required regarding underlying hydrology and microbial colonization patterns before any predictions can be made regarding the potential unintended consequences of disturbing the microbial communities of inactive vent fields.

### **Possible impacts to microbial biomass, primary production, and diversity at inactive vent fields**

Inactive vent fields are not currently known to host many endemic animals, as recently reviewed elsewhere (Van Dover

2019), though this may be due to a lack of exploration. Inactive vent fields represent a broad transition zone between actively venting hydrothermal systems and non-hydrothermal seafloor environments and are therefore expected to share features of each (Levin et al. 2016a,b). As in active vents, some animal taxa in inactive vent fields may obtain their nutrition in association with chemoautotrophic microbial production (Erickson et al. 2009; Copley et al. 2016; Thomas et al. 2018). Many animals from the next generation recruit their symbionts from the environment independently of the previous generation (Van Dover 2000; Bright et al. 2013; Thomas et al. 2018), so disruptions to the composition of the ambient seawater microbial communities could affect the ability of these animals to persist in areas adjacent to mining activities even if their own habitat is not directly affected (Fig. 3).

Inactive hydrothermal vent fields are home to microbial species that are distinct from those of active hydrothermal sites (Suzuki et al. 2004; Erickson et al. 2009; Sylvan et al. 2012; Toner et al. 2013). However, the overall microbial community composition of inactive vent fields can be similar to that of the surrounding seafloor (Kato et al. 2010), indicating that inactive fields may not host as many unique and endemic populations as active vents do (Fig. 3). Any generalized descriptions of inactive vent fields are premature, however, considering that very few examples have been detected and studied (Boschen et al. 2013; Vare et al. 2018; Van Dover 2019). Furthermore, very few studies have attempted to characterize the microbial communities of inactive vent fields, their roles in local and global biogeochemical cycling, or as refugia and seed-banks for the more dynamic active vent fields. Inactive hydrothermal systems may lack vigorous hydrothermal venting, but they nevertheless contain complex subsurface habitats with unknown microbial ecosystems. Ecosystem services that these subsurface microbial communities could potentially provide include primary production, secondary production, element cycling, and unique genetic resources, although knowledge of these services is poorly constrained due to very limited sampling (Fig. 3).

### **Potential loss of habitat and creation of acidic conditions from mining massive sulfide deposits at inactive vent fields**

A few categories of the potential impacts of mining on inactive sulfide-associated microbial communities are highlighted here. Our estimates mainly come from activities occurring within the national boundaries of Papua New Guinea, which is the most well-known mining project in a seafloor hydrothermal system, led by Nautilus Minerals (Coffey Natural Systems 2008). There has been recent report of newer mining tests offshore Japan (Kyodo News 2017), but less information is publicly available from this site.

Mining seafloor massive sulfide deposits is a form of open-pit mining, where the top layer of sediment and crust is removed as overburden, and the exposed ore is removed in successive layers until the deposit is completely removed or



“mined out.” As with terrestrial mining sites, one can expect that exposure of massive sulfide deposits will start a cascade of abiotic and microbially catalyzed reactions, due to the exposure of the deposits to oxygenated seawater. Metal-bearing sulfide minerals are the main constituent of massive sulfide deposits (Boschen et al. 2013), and the overall oxidation reaction that occurs when this mineral is exposed to oxygen and water generates protons. Where the local environmental buffering capacity is unable to absorb these additional protons, a feedback system takes effect that causes a pH decrease. A change in pH causes changes in the type, speed, and solubility of chemical reactions that occur (Bethke et al. 2011; Trezzi et al. 2016; Jin and Kirk 2018; Fuchida et al. 2019), leading to changes in metal and oxygen dissolution properties in addition to changes in biology. This process and its effects are termed acid mine drainage or acid rock drainage in terrestrial systems (Schippers et al. 2010; Nordstrom 2011), where studies have been conducted on the roles that microbes play in contributing to these processes (Baker and Banfield 2003; Johnson 2003; Kermer et al. 2012; Nordstrom et al. 2015). Studies on the interactions of sulfide minerals and the buffering capacity and pH of seawater have so far not taken possible catalytic effects of microorganisms into consideration (Bilenker et al. 2016).

In terrestrial systems, exhausted open-pit mines create terraced open pits that can slowly fill with lakes or groundwater of altered chemistry, as any remaining metal-rich sulfides react with exposure to water and oxygen to create acidic conditions. In a marine sulfide system, such a pit will be permanently exposed to the oxic deep seawater long after extraction ceases, also allowing for the creation of acidic conditions. Although seawater has a higher pH buffering capacity than freshwater on land, a recent study on treatment of acid mine drainage from a terrestrial massive sulfide deposit (itself an ancient hydrothermal vent site) showed that a ratio of 1 part acid mine drainage to 90 parts seawater was required to neutralize the acid conditions (Sapsford et al. 2015). Biotic catalysis in the form of microbes may be a key factor in determining how exposed sulfide deposits will react to bottom seawater, but no studies have directly investigated the role of biological catalysis in marine environments affected by mining.

The consequences of the local-scale destruction and permanent loss of seafloor habitat and endemic microbial life caused by deep-sea mining are difficult to predict (Fig. 3), since there is no precedent for such activities in the deep sea (Miller et al. 2018). One speculative scenario if no remedial action is considered is that water in a deep mining pit on the seafloor may become sufficiently isolated from actively flowing seawater to stagnate and create a potentially permanent acidic, anoxic condition, but research is needed to investigate this possibility. Even minimal fluxes of material out of the pit could be sufficient to propagate acid mine drainage reactions to surrounding areas. Where there is local recharge of bottom seawater into ocean crust (Fisher and Wheat 2010), which itself

would likely be affected by changes in seafloor topography, the polluted water may also be entrained into the seafloor and transported from the point source farther than predicted. The degree to which acidic mining pits might influence surrounding ecosystems and the roles of microbial communities in these acid-generating reactions requires investigation. The inclusion and exploration of effective strategies to mediate such scenarios, such as preventing fluid stagnation, should be considered for deep-sea mining activities.

#### ***Generation of tailings plumes from mining massive sulfide deposits at inactive vent fields***

In addition to the loss of habitat directly caused by mining the seafloor, mining activities will produce a plume of waste material that will disperse and fall on the surrounding seafloor, which is expected to nearly double the total area of seafloor impacted by sulfide deposit mining (Boschen et al. 2013; Fallon et al. 2017). Although this a relatively small footprint of the total seafloor, the environmental impact of this plume of waste material will depend on several factors, including altitude of dispersal relative to the seafloor and the proximity of the waste plume to active hydrothermal systems. If the active vents are close enough to the mining area, they could hypothetically become partially to completely buried in the mining plume. There is little information on estimates of burial by a tailings plume on surrounding seafloor life, and how these effects compare to impacts from natural dispersal of plumes from active hydrothermal vents (Rudnicki et al. 1994; Hoffman et al. 2018). Measurable impacts from deposits of mining tailings on the seafloor include elevated concentrations of various transition metals in sediment, blanketing of the seabed by compacted precipitates, and release of elevated concentrations of sulfur and transition metals into the water column (Kline and Stekoll 2001; Shimmield et al. 2011; Ramirez-Llodra et al. 2015; Hauton et al. 2017).

Mining waste on the seafloor is known to affect microbial biogeochemical cycling and the rates and success of community recovery in shallow coastal sites (Pedersen 1984; Pedersen and Losher 1988; Almeida et al. 2007); however, no studies have explored the impacts of tailings plumes on deep-sea microbial communities, including symbionts on which hydrothermal vent fauna depend. Natural plumes emitted from hydrothermal systems are known to have profound implications for the composition and activity of deep-sea microbial communities (Anantharaman et al. 2013; Dick et al. 2013; Levin et al. 2016a); therefore, the potential impacts of tailings plumes can also be expected to be significant. Burial of seafloor habitat, even if it is not hydrothermally active, could disrupt the ability of microscopic animal larvae to sense seafloor conditions and to respond to environmental cues of where to attach and colonize (Gollner et al. 2010, 2015). Considering the likelihood of active vents with important microbial ecosystem services (see “Active vents and active vent fields” section) in the proximity of inactive massive sulfide deposits,

determination of the critical distance for mining plume effects should be studied prior to any mining activities (Dunn et al. 2018).

There is also the potential impact of plumes of mining tailings closer to the ocean surface. Tailings still contain elevated concentrations of acid-generating sulfides and heavy metals. Current mining operation designs propose to transport mined seafloor material to a surface ship for processing, returning the waste fluids to the ocean (Schriever and Thiel 2013). This is similar to Deep-Sea Tailings Disposal, a strategy already used by a small number of terrestrial mines (Jones and Ellis 1995; Schriever and Thiel 2013; Dold 2014; Vare et al. 2018). This tailings waste stream, consisting of rock/ore fragments of small size and initial treatment chemicals as well as elevated concentrations of dissolved metals from the mining process, will create plumes of debris in the water column (Nath et al. 2012; Boschen et al. 2013; Fallon et al. 2017). Tailings may extend affected areas up to 80% from the point-source of pollution, though this can be difficult to predict, particularly in the deep sea where baseline information is scarce (Boschen et al. 2013; Hughes et al. 2015; Fallon et al. 2017; Vare et al. 2018). A few studies have investigated the various effects of tailings plumes on marine animals (Kline and Stekoll 2001; Mestre et al. 2017). The impacts on microbial ecosystem services of dispersal of metal-rich tailings particles into the water column has not been studied in detail, but metal availability is a key determinant of microbial primary production supporting the food web in the low nutrient areas of the oligotrophic ocean that overlies much of the known vent deposits (Holmes et al. 2017). Studies on the effects and magnitude of potential metal leachate concentrations in seawater indicate significant local effects, particularly in areas of low or stagnant flow, and have the potential to remain in solution despite extensive mixing (Sapsford et al. 2015; Fallon et al. 2017, 2018). Any substantial chemical amendments will likely have consequences for microbial community structure and function, and therefore ecosystem services, as observed with hydraulic fracturing on land (Murali Mohan et al. 2013).

Disruption of natural microbial communities and stimulation of heavy metal-metabolizing microbes, in particular, may have far-reaching consequences for element cycling in the deep sea (Fig. 3). Some metals may enter solution due to microbial activity, thus spreading the effect to a larger area and making the metals more bioavailable and increasing their toxicity. Others may precipitate out of solution more readily, causing issues such as blanketing areas of the seafloor with amorphous metal-rich precipitates. There is currently no research on the relevant thresholds over which some level of mining activity might begin to impact marine element cycling on a regional level.

Lessons from terrestrial massive sulfide mining show that environmental change brought about by these activities persists long after mining activity has ceased, including cases where point-source remediation measures are in place (Bird

2016). However, remediation strategies that might be applied to operationally challenging deep-sea environments are poorly developed, though some studies have made tentative recommendations (Ramirez-Llodra et al. 2015; Vare et al. 2018). An industry report proposes that active sites will regenerate themselves by generating new mineral cover from already-present geochemical reactions and biology reseeded from nearby refugia (Coffey Natural Systems 2008), though the report does not specify how long this might take and whether it will require active human management. Even if this prediction is reasonable for active vent fields, it is not applicable to inactive vent fields. We speculate that taking no remedial action will likely result in acid mine drainage conditions over many decades, but research is needed to assess this. Remediation strategies are likely to involve either natural dilution of the mining pit with seawater or else capping and permanent isolation of the pit. Both strategies have potential consequences and require extensive investigation. Depending on the local buffering capacities, natural dilution of the pit may not be sufficient to completely neutralize the acid-generating chemical reactions, potentially resulting in spreading acid-mine drainage across a much broader area of the seafloor. Capping the pit would require development of new technology capable of permanently isolating a large deep-sea pit, and failure of the cap could have devastating consequences for nearby ecosystems, potentially resulting in run-away acid mine drainage reactions within the capped region.

### Ferromanganese nodules

Ferromanganese nodules form in sediment underlying organic-poor regions of the global ocean, often at water depths > 4000 m (Figs. 1, 2). In addition to iron and manganese, nodules incorporate high concentrations of economically valuable metals such as nickel, cobalt, and copper (Hein et al. 2013). Nodule size ranges from microscopic particles to several centimeters in diameter and occur dispersed across nodule fields. Nodule growth is extremely slow (millimeters to centimeters accumulation per million years; Ku and Broecker 1965; Bender et al. 1966; Boltenkov 2012), and surrounding pelagic sediments accumulate Mn at approximately similar rates as nodules (< 5 mg cm<sup>-3</sup> per 1000 yr; Bender et al. 1970). Nodules can acquire manganese from sediment pore waters or from the overlying water column. The growth mechanism is mediated by the redox state of overlying waters and, in some environments, growth can be supported by hydrothermal influence and may change throughout the growth history of the manganese nodule (Mewes et al. 2014; Wegorzewski and Kuhn 2014). Whether nodule growth proceeds purely abiotically, or is influenced by microbial activity or seeding is not currently known, although microbial communities have been detected in nodules (Tully and Heidelberg 2013; Lindh et al. 2017). Recent studies have also documented novel animal communities that are supported by nodule fields (Bluhm et al. 1995; Purser et al. 2016; Vanreusel et al. 2016; Peukert et al. 2018).

Several studies have correlated water depth with nodule coverage to extrapolate and predict nodule occurrences over a wider area (Park et al. 1997; Jung et al. 2001; Kim et al. 2012; Peukert et al. 2018). Invariably, the occurrence of nodules coincides with areas of low sedimentation; for example, the sedimentation rate in the Clarion Clipperton Zone is estimated to be 0.3–15 mm per 1000 yr (Jeong et al. 1994). These low sedimentation rates, which are typical of ocean gyres, are due to extremely low productivity of the overlying ocean, which exports low amounts of particles and organic matter to the deeper ocean. Thus, mining of nodules would disrupt deep-sea sediment environments that have evolved over millennia and would likely take just as long to recover to predisturbance conditions.

Manganese nodules harbor active microbial communities with cell densities three-orders of magnitude higher than in surrounding sediment (Shiraishi et al. 2016). However, the specific organism(s) responsible for manganese oxidation and precipitation in those environments remain unidentified, despite some recent studies suggesting different chemical processes and structures occurring in the interiors vs. exteriors of nodules, and nodule microbial communities that are distinct from the surrounding sediment (Tully and Heidelberg 2013; Blöthe et al. 2015; Shulse et al. 2017). The interplay between sediment geochemistry and nodule microbial community structure remains poorly understood. It is therefore difficult to predict what the microbial and biogeochemical response and recovery would be to disturbance caused by deep-sea mining (Fig. 3).

#### ***Limited impacts to organic carbon sequestration from mining ferromanganese nodules***

Marine sediments are a major sink of organic matter over geological timescales and an important part of the global carbon and oxygen cycles (Bernier 2003). Sinking particles settling on the ocean floor are buried, effectively protecting and preserving their organic matter contents, and impeding it from microbial “remineralization” to carbon dioxide. The burial of organic carbon in the deep ocean is an important component of the global carbon cycle, thus regulating atmospheric CO<sub>2</sub> and global climate through the sequestration of carbon, and allowing the buildup of oxygen in the atmosphere (Arndt et al. 2013; Hülse et al. 2017). Deep-sea mining of ferromanganese nodules will cause the resuspension of sediments (Thiel and Schriever 1990), potentially altering the ecosystem service of carbon sequestration that occurs in this habitat by changing the balance between carbon preservation and microbial remineralization.

We estimate (see Supporting Information for calculations), however, that proposed mining of these nodule-bearing sediments and resulting resuspension of particles and organic matter will have a trivial impact on the ecosystem service of carbon sequestration for two reasons (Fig. 3). First, these sediments contain extremely low quantities of organic matter (< 0.5%; Khripounoff et al. 2006). This is typical for deep-sea sediment (Seiter et al.

2004), since the particles delivering organic carbon to the ocean floor must sink over long distances to reach the ocean floor, during which the majority of organic matter is remineralized by microbes in the water column (Marsay et al. 2015; Cavan et al. 2017). Thus, only a relatively small mass of carbon might be resuspended, compared to the much higher carbon loads in nearshore sediment environments. Second, the organic matter contained in these deep-sea sediments is likely to be highly processed and thus not particularly bioavailable to microbial remineralization, so most of the organic carbon would be redeposited on the seafloor and sequestered. Furthermore, as stimulation of organic carbon remineralization in the overlying water column is likely to be low, there would be inconsequential changes in dissolved oxygen concentration in bottom seawater (< 0.5%).

Although net carbon sequestration in nodule-hosting abyssal sediment may not be impacted by mining activity, there could be disturbance to the local, short-term carbon cycling that supports the ecosystem. A recent study documented the microbial ecosystem service of primary production provided by benthic microorganisms living on nodules in the Clarion-Clipperton Zone, and that the observed rates of primary production may rival degradation of detritus-derived carbon (Sweetman et al. 2019). Thus, removing nodules from the seafloor could impact the primary production supporting the base of the food web in this area. For example, the blanketing of nearby nodules with sediment particles after mining activity, which has been documented to extend up to 100 m from the site of activity (Peukert et al. 2018), could limit the ability of the remaining nodule-attached microbial communities to provide this service.

#### ***Other microbial ecosystem service impacts from mining ferromanganese nodules***

Although the carbon sequestration ecosystem service of nodule fields would not be impacted, other microbial ecosystem services in nodule fields are expected to be impacted by mining activity (Fig. 3). For example, as part of the European JPI Oceans Mining Impact project (Paul et al. 2018), the DISturbance and reCOLonization (DISCOL) area was recently revisited to study the long-term impact of nodule mining. The DISCOL experiment was carried out in 1989 in the Peru Basin in which the deep seafloor was plowed in an area of ~ 11 km<sup>2</sup> to mimic nodule mining (Thiel et al. 2001). Clear geochemical differences, including metal distributions, in the upper 20 cm of disturbed and undisturbed sediments could be observed even 26 yr after plowing (Paul et al. 2018). Based on their observations, the authors noted that nodule mining will likely have long-lasting impacts on the geochemistry of the underlying sediment (Paul et al. 2018). Specifically, solid-phase manganese concentrations were lower in disturbed areas compared to reference areas. This finding suggests that the capacity for metal sequestration via scavenging onto nodules will be substantially limited during the recovery period. The absence of nodules in the disturbed area increases metal flux out of sediment, although it is argued that

these flux rates do not reach rates that are potentially toxic to animals (Paul et al. 2018).

Nodule regrowth may also be limited by both the geochemical and microbiological changes following mining-related disturbances. For example, thermodynamic and kinetic constraints limit the oxidation of reduced manganese to oxidized manganese by oxygen (Luther 2010). Microbes can catalyze this reaction via direct and indirect pathways; thus, the formation of most manganese oxide minerals in the environment is microbially mediated (Hansel and Learman 2015). A broad diversity of organisms are capable of manganese oxidation, from bacteria to fungi (Hansel 2017), although microbial manganese oxidation does not provide an energetic benefit to the organism and the physiological purpose is unclear.

Mining activities could cause a decrease in the microbial ecosystem service of this habitat through the destruction of paleoscientific records in the sediments and nodules themselves, a valuable educational aspect of this environment for reconstructing climate conditions over Earth's history (Fig. 3). Fossils found in sediments are frequently used to reconstruct and understand the past chemistry and temperature of the ocean. For example, the calcium carbonate shells of microorganisms such as foraminifera or coccoliths can be analyzed using oxygen isotopes to determine the temperature and chemistry of ancient seawater and how cold the ocean was at the time the shell formed (Spero et al. 1997; Ornella Amore et al. 2004; Maeda et al. 2017). Moreover, diatom microfossils can be used to understand upwelling currents and reconstruct past wind and weather patterns (Abrantes 1991; Schrader and Sorknes 1991; Zúñiga et al. 2017). There are other paleoscientific records captured in sediment layers (Rea 1994; Middleton et al. 2018) and the nodules themselves (Glasby et al. 1987; Albarède et al. 1997; Kasten et al. 1998; Frank et al. 1999; van de Flierdt et al. 2004), although these are not due to microbial processes. Sediment in nodule-rich regions is particularly valuable due to a low sedimentation rate that allows for piston coring techniques to readily access extremely old sediment. Widespread sediment disturbances from nodule mining could result in the loss of this record and educational ecosystem service if there are not mitigating activities such as collection and preservation of cores before mining activity and ensuring that APEIs contain representative sediments (Fig. 3).

Overall, mining activities in nodule fields will have varied impacts on microbial ecosystem services (Fig. 3). Some services, such as carbon sequestration potential, will be minimally impacted ("Limited impacts to organic carbon sequestration from mining ferromanganese nodules" section). Other services, such as research and educational value from paleoscientific records contained with sediment layers, could be severely perturbed and not recoverable if sufficient mitigation strategies are lacking ("Other microbial ecosystem service impacts from mining ferromanganese nodules" section). Decades-long studies have identified that microbial processes

with the sediments underlying nodules remain impacted for quite some time (Paul et al. 2018), but the corresponding impact this has to biogeochemical cycling and ecological functioning is not constrained and requires further investigation, despite this resource type having been the most studied for these kinds of impacts (*see* Supporting Information). Further research is needed to assess if restoration efforts, such as deploying replacement hard substrates within disturbed areas (Koschinsky et al. 2018), will result in restoration of some of these microbial ecosystem services.

### Cobalt crusts on basaltic seamounts

Cobalt-rich crusts (also called polymetallic crusts) occur on sediment-free rock surfaces in all oceans of the world (Figs. 1, 2), ranging in thickness from < 1 mm to ~ 260 mm in the examples that have been studied. They are most common in the Pacific Ocean where there are estimated to be over 50,000 seamounts and knolls and many more seamounts likely exist in uncharted waters (Wessel et al. 2010; Levin et al., 2016b). In addition to cobalt, other rare and trace metals of high economic value—including copper, nickel, platinum, and tellurium (used in the solar cell industry)—are adsorbed to the crust from seawater. In the central Pacific, ~ 7500 million dry tons of crusts are estimated, containing four times more cobalt, nine times more tellurium, and a third of the manganese that makes up the entire land based reserve of these metals (Hein et al. 2013). Polymetallic crusts are formed slowly (1–5 mm per million years), and biomineralization by microorganisms plays a role in initiation of crust accretion, serving as a biological nuclei (Wang and Müller 2009). Microorganisms may also play a role in promoting the enrichment of cobalt in the crust through sorption/immobilization processes (Krishnan et al. 2006; Sujith et al. 2017).

### Possible impacts to biomass, primary production, and microbial diversity in cobalt crusts

The alteration rinds that form on seafloor exposed basalts at seamounts and outcrops (i.e., cobalt-rich crusts) provide a habitat suitable for sessile animals like corals and sponges that require a hard substrate to attach to (Etnoyer et al. 2010; Shank 2010), as well as for brooding animals like octopus (Hartwell et al. 2018). However, the role microorganisms play in faunal colonization and presence in these regions remains unknown, as does the relative role of microbial chemosynthesis and heterotrophy in this ecosystem. Some studies suggest persistent patterns in microbial community composition on highly altered seafloor-exposed basalts that have ferromanganese crusts (Lee et al. 2015). Surveys of microorganisms from sediments associated with cobalt-rich crusts (Liao et al. 2011; Huo et al. 2015) and manganese rich crust (Nitahara et al. 2011) have detected the potential for microbial chemosynthetic primary production supported by ammonia oxidation. Similarly, the amount of primary production supported by

microbial communities on altered seafloor basalts could be significant for carbon cycling in the deep sea (Orcutt et al. 2015).

Removal of alteration crusts from seamounts and outcrops through mining/dredging is expected to physically alter the seafloor substantially. The overall slope of the seamount may be flattened, and the amount of soft sediment increased through disturbance and release of waste during the mining process. Moreover, mining/dredging activities that change the physical structure of the seamount/outcrop would potentially impact fluid circulation pathways through basaltic crust, especially on ridge flanks. This outcrop-to-outcrop fluid circulation away from the ridge axis ventilates the majority of heat from the oceans (Fisher et al. 2003; Fisher and Wheat 2010) and is an important component of global geochemical cycles (Wheat et al. 2017, 2019). For example, a recent study indicated that at least 5% of the global ocean dissolved organic carbon pool is removed via microbial oxidation within the subsurface ocean crust during ridge flank fluid circulation (Shah Walter et al. 2018). Mining activities could change the permeability, porosity and locations of fluid discharge, which would impact fluid circulation and could have consequences on the nature of microbial communities resident in these environments that are influenced by fluid conditions (Fig. 3) (Zinke et al. 2018). However, very little is known about fluid circulation far away from ridge axes where many seamounts occur, so it is difficult to know how widespread this disruption could be.

#### ***Other possible impacts to microbial ecosystem services in cobalt crusts***

Microorganisms in cobalt crusts can likely use metals as an energy source and carry adaptations to tolerate the high heavy metal concentrations that occur in polymetallic crusts, potentially playing a role in metal cycling in oceans. Crustal microorganisms have demonstrated the ability to immobilize cobalt from seawater, release trace metals like nickel, and may also be capable of scavenging other metals (Krishnan et al. 2006; Antony et al. 2011). These traits are of interest for biotechnological applications, or applications that involve metal/microbe interactions such as bioremediation of polluted sites, bioleaching, and metal recovery (Fig. 3). However, the financial considerations for dredging cobalt crusts from the seafloor limit the viability of this natural product discovery track.

#### ***Recommendations for baseline and monitoring data to evaluate impacts to microbial ecosystem services***

Recommendations for baseline measurements and monitoring of mining impacts have been published elsewhere (Gjerde et al. 2016; Henocque 2017; Boetius and Haeckel 2018; Cuyvers et al. 2018; Durden et al. 2018; Jones et al. 2018). These recommendations include measurements of animal biodiversity and deep-sea ecosystem structure and function. We propose that including microorganisms in these biodiversity and ecosystem measurements is critical for effective monitoring of mining impacts. In high energy environments like

hydrothermal vents, where many microorganisms have short generation times, measurements of microbial diversity are likely to be highly sensitive and quickly responsive to environmental impacts. Alternatively, impacts in lower energy environments like deep-sea sediments hosting ferromanganese nodules may be harder to discern. Furthermore, the responses of microbial communities to mining impacts will be more complex than a simple “good” or “bad,” as microbial species will respond in many different ways. Changes in microbial community composition are likely to convey a wealth of information about changes to the environment, if we are able to detect and decipher these signals. With enough research, monitoring of microbial communities could become sufficiently sensitive and specific to enable adjustments of ongoing mining activities before impacts to animal communities reach a dangerous threshold.

Predicting and assessing the environmental impacts of mining in the deep sea is fundamentally more challenging than on land because so little of the deep sea has been explored in any detail. In many areas under consideration for mining, we lack any knowledge of how the resident microbial communities contribute to primary production and element cycling in their habitats and how these local activities relate to regional- and global-scale chemical cycles. Therefore, any assessment or monitoring of mining impacts should consider the potential unexpected consequences associated with undiscovered microbial organisms and activities stimulated, directly or indirectly, by mining activities.

One pragmatic approach to the monitoring of mining impacts is the creation of protected areas and reserves, as recommended by others. Protected areas, such as Preservation Reference Zones where no impacts occur within mining sites (International Seabed Authority 2018a), and reserves would be particularly useful as reference points for the monitoring of microbial communities, since there is no way to assess the status of a microbial community a priori without reference points. Samples for detailed microbial community analysis through DNA sequencing approaches should be collected from both protected and impacted sites, to evaluate change. We note that the ISA already recommends collection of microbial community structure and biomass data for environmental impact assessment (International Seabed Authority 2013a). It is worth emphasizing, though, that the technology for measuring microbial diversity is advancing so quickly that baseline measurements collected prior to mining activities are likely to be rendered obsolete shortly thereafter, therefore appropriate samples should be archived for reanalysis with new techniques as they become available. We also advocate adding to environmental impact assessment recommendations (International Seabed Authority 2018b) such as the use of in situ and lab-based activity-oriented experiments to evaluate changes in metabolic activities that could alter element and nutrient distributions due to anticipated disruptions. Finally, we concur with recent recommendations that environmental

impact planning be executed by the ISA at a larger scale than individual contracts (Tunncliffe et al. In press), as mitigation and remediation efforts for maintaining or restoring microbial ecosystem services may need to be considered at these larger scales.

In conclusion, while some ecosystem services provided by microbial life in deep-sea habitats may be minimally impacted by mining activities, others are expected to be severely impacted (Fig. 3). Active vent environments are expected to suffer the most extreme impacts from mining activity, which will be hard to avoid even with protected offsets (Dunn et al. 2018). There are several critical knowledge gaps that remain, and these are not evenly distributed across habitat type. For example, the long-term impacts of mining inactive sulfide deposits are poorly known, but could be dramatic in comparison to open-pit mines on land. When considering that the total estimated copper and zinc potential of these deposits are only slightly larger than the annual production on land (Hannington et al. 2011), it is important to weigh the consequences of these activities in environmental impact assessments. Moreover, it is unclear how extensively the seabed and overlying water column can be disturbed before tipping points are reached and some ecosystem services become negatively and/or critically impacted on local and regional scales. We highly recommend that baseline assessments of microbial diversity, biomass, and rates of chemical processes be included in environmental impact assessment planning.

## References

- Abrantes, F. 1991. Increased upwelling off Portugal during the last glaciation: Diatom evidence. *Mar. Micropaleontol.* **17**: 285–310. doi: [10.1016/0377-8398\(91\)90017-Z](https://doi.org/10.1016/0377-8398(91)90017-Z)
- Albarède, F., S. L. Goldstein, and D. Dautel. 1997. The neodymium isotopic composition of manganese nodules from the Southern and Indian oceans, the global oceanic neodymium budget, and their bearing on deep ocean circulation. *Geochim. Cosmochim. Acta* **61**: 1277–1291. doi: [10.1016/S0016-7037\(96\)00404-8](https://doi.org/10.1016/S0016-7037(96)00404-8)
- Almeida, A., Á. Cunha, S. Fernandes, P. Sobral, and F. Alcântara. 2007. Copper effects on bacterial activity of estuarine silty sediments. *Estuar. Coast. Shelf Sci.* **73**: 743–752. doi: [10.1016/j.ecss.2007.03.013](https://doi.org/10.1016/j.ecss.2007.03.013)
- Anantharaman, K., J. A. Breier, C. S. Sheik, and G. J. Dick. 2013. Evidence for hydrogen oxidation and metabolic plasticity in widespread deep-sea sulfur-oxidizing bacteria. *Proc. Natl. Acad. Sci. USA* **110**: 330–335. doi: [10.1073/pnas.1215340110](https://doi.org/10.1073/pnas.1215340110)
- Anderson, R. E., W. J. Brazelton, and J. A. Baross. 2011. Is the genetic landscape of the deep subsurface biosphere affected by viruses? *Front. Microbiol.* **2**: 219. doi: [10.3389/fmicb.2011.00219](https://doi.org/10.3389/fmicb.2011.00219)
- Antony, R., P. Sujith, S. O. Fernandes, P. Verma, V. Khedekar, and P. L. Bharathi. 2011. Cobalt immobilization by manganese oxidizing bacteria from the Indian ridge system. *Curr. Microbiol.* **62**: 840–849. doi: [10.1007/s00284-010-9784-1](https://doi.org/10.1007/s00284-010-9784-1)
- Arndt, S., B. B. Jørgensen, D. E. LaRowe, J. L. Middelburg, R. D. Pancost, and P. Regnier. 2013. Quantifying the degradation of organic matter in marine sediments: A review and synthesis. *Earth Sci. Rev.* **123**: 53–86. doi: [10.1016/j.earscirev.2013.02.008](https://doi.org/10.1016/j.earscirev.2013.02.008)
- Baaske, P., F. M. Weinert, S. Dühr, K. H. Lemke, M. J. Russell, and D. Braun. 2007. Extreme accumulation of nucleotides in simulated hydrothermal pore systems. *Proc. Natl. Acad. Sci. USA* **104**: 9346–9351. doi: [10.1073/pnas.0609592104](https://doi.org/10.1073/pnas.0609592104)
- Baker, B. J., and J. F. Banfield. 2003. Microbial communities in acid mine drainage. *FEMS Microbiol. Ecol.* **44**: 139–152. doi: [10.1016/S0168-6496\(03\)00028-X](https://doi.org/10.1016/S0168-6496(03)00028-X)
- Baross, J. A., and S. E. Hoffman. 1985. Submarine hydrothermal vents and associated gradient environments as sites for the origin and evolution of life. *Orig. Life Evol. Biosph.* **15**: 327–345. doi: [10.1007/BF01808177](https://doi.org/10.1007/BF01808177)
- Bender, M. L., T.-L. Ku, and W. S. Broecker. 1966. Manganese nodules: Their evolution. *Science* **151**: 325–328. doi: [10.1126/science.151.3708.325](https://doi.org/10.1126/science.151.3708.325)
- Bender, M. L., T.-L. Ku, and W. S. Broecker. 1970. Accumulation rates of manganese in pelagic sediments and nodules. *Earth Planet. Sci. Lett.* **8**: 143–148. doi: [10.1016/0012-821X\(70\)90164-0](https://doi.org/10.1016/0012-821X(70)90164-0)
- Berner, R. A. 2003. The long-term carbon cycle, fossil fuels and atmospheric composition. *Nature* **426**: 323–326. doi: [10.1038/nature02131](https://doi.org/10.1038/nature02131)
- Bethke, C. M., R. A. Sanford, M. F. Kirk, Q. Jin, and T. M. Flynn. 2011. The thermodynamic ladder in geomicrobiology. *Am. J. Sci.* **311**: 183–210. doi: [10.2475/03.2011.01](https://doi.org/10.2475/03.2011.01)
- Bilenker, L. D., G. Y. Romano, and M. A. McKibben. 2016. Kinetics of sulfide mineral oxidation in seawater: Implications for acid generation during in situ mining of seafloor hydrothermal vent deposits. *Appl. Geochem.* **75**: 20–31. doi: [10.1016/j.apgeochem.2016.10.010](https://doi.org/10.1016/j.apgeochem.2016.10.010)
- Bird, G. 2016. The influence of the scale of mining activity and mine site remediation on the contamination legacy of historical metal mining activity. *Environ. Sci. Pollut. Res.* **23**: 23456–23466. doi: [10.1007/s11356-016-7400-z](https://doi.org/10.1007/s11356-016-7400-z)
- Bischoff, J. L., R. J. Rosenbauer, P. J. Aruscavage, P. A. Baedeker, and J. G. Crock. 1983. Sea-floor massive sulfide deposits from 21 degrees N East Pacific Rise, Juan de Fuca Ridge, and Galapagos Rift; bulk chemical composition and economic implications. *Econ. Geol.* **78**: 1711–1720. doi: [10.2113/gsecongeo.78.8.1711](https://doi.org/10.2113/gsecongeo.78.8.1711)
- Blöthe, M., A. Węgorzewski, C. Müller, F. Simon, T. Kuhn, and A. Schippers. 2015. Manganese-cycling microbial communities inside deep-sea manganese nodules. *Environ. Sci. Technol.* **49**: 7692–7700. doi: [10.1021/es504930v](https://doi.org/10.1021/es504930v)
- Bluhm, H., G. Schriever, and H. Thiel. 1995. Megabenthic recolonization in an experimentally disturbed abyssal manganese area. *Mar. Georesour. Geotechnol.* **13**: 393–416. doi: [10.1080/10641199509388295](https://doi.org/10.1080/10641199509388295)

- Boetius, A., and M. Haeckel. 2018. Mind the seafloor. *Science* **359**: 34–36. doi: [10.1126/science.aap7301](https://doi.org/10.1126/science.aap7301)
- Boltenkov, B. 2012. Mechanisms of formation of deep-sea ferromanganese nodules: Mathematical modeling and experimental results. *Geochem. Int.* **50**: 125–132. doi: [10.1134/S0016702911120044](https://doi.org/10.1134/S0016702911120044)
- Boschen, R. E., A. A. Rowden, M. R. Clark, and J. P. A. Gardner. 2013. Mining of deep-sea seafloor massive sulfides: A review of the deposits, their benthic communities, impacts from mining, regulatory frameworks and management strategies. *Ocean Coast. Manage.* **84**: 54–67. doi: [10.1016/j.ocecoaman.2013.07.005](https://doi.org/10.1016/j.ocecoaman.2013.07.005)
- Bourbonnais, A., S. K. Juniper, D. A. Butterfield, R. E. Anderson, and M. F. Lehmann. 2014. Diversity and abundance of Bacteria and nirS-encoding denitrifiers associated with the Juan de Fuca Ridge hydrothermal system. *Ann. Microbiol.* **64**: 1691–1705. doi: [10.1007/s13213-014-0813-3](https://doi.org/10.1007/s13213-014-0813-3)
- Bright, M., I. Eichinger, and L. von Salvini-Plawen. 2013. The metatrochophore of a deep-sea hydrothermal vent vestimentiferan (Polychaete: Siboglinidae). *Org. Divers. Evol.* **13**: 163–188. doi: [10.1007/s13127-012-0117-z](https://doi.org/10.1007/s13127-012-0117-z)
- Campbell, B. J., A. Summers Engel, M. L. Porter, and K. Takai. 2006. The versatile  $\epsilon$ -proteobacteria: Key players in sulphidic habitats. *Nat. Rev. Microbiol.* **4**: 458–468. doi: [10.1038/nrmicro1414](https://doi.org/10.1038/nrmicro1414)
- Cavan, E. L., M. Trimmer, F. Shelley, and R. Sanders. 2017. Remineralization of particulate organic carbon in an ocean oxygen minimum zone. *Nat. Commun.* **8**: 14847. doi: [10.1038/ncomms14847](https://doi.org/10.1038/ncomms14847)
- Christiansen, B., A. Denda, and S. Christiansen. In press. Potential effects of deep seabed mining on pelagic and benthopelagic biota. *Mar. Policy*. doi: [10.1016/j.marpol.2019.02.014](https://doi.org/10.1016/j.marpol.2019.02.014)
- Coffey Natural Systems. 2008. Environmental impact statement. Solwara 1 Project. Nautilus Minerals Miugini Limited.
- Copley, J. T., and others. 2016. Ecology and biogeography of megafauna and macrofauna at the first known deep-sea hydrothermal vents on the ultraslow-spreading Southwest Indian Ridge. *Sci. Rep.* **6**: 39158. doi: [10.1038/srep39158](https://doi.org/10.1038/srep39158)
- Corliss, J., and others. 1979. Submarine thermal springs on the galapagos rift. *Science* **203**: 1073–1083. doi: [10.1126/science.203.4385.1073](https://doi.org/10.1126/science.203.4385.1073)
- Cuyvers, L., W. Berry, K. Gjerde, T. Thiele, and C. Wilhelm. 2018. Deep seabed mining: A rising environmental challenge. IUCN and Gallifrey Foundation. doi: [10.2305/IUCN.CH.2018.16.en](https://doi.org/10.2305/IUCN.CH.2018.16.en)
- Deming, J. W., and J. A. Baross. 1993. Deep-sea smokers: Windows to a subsurface biosphere? *Geochim. Cosmochim. Acta* **57**: 3219–3230. doi: [10.1016/0016-7037\(93\)90535-5](https://doi.org/10.1016/0016-7037(93)90535-5)
- Dick, G. J., K. Anantharaman, B. J. Baker, M. Li, D. C. Reed, and C. S. Sheik. 2013. The microbiology of deep-sea hydrothermal vent plumes: Ecological and biogeographic linkages to seafloor and water column habitats. *Front. Microbiol.* **4**: 124. doi: [10.3389/fmicb.2013.00124](https://doi.org/10.3389/fmicb.2013.00124)
- Dold, B. 2014. Submarine tailings disposal (STD) - a review. *Minerals* **4**: 642–666. doi: [10.3390/min4030642](https://doi.org/10.3390/min4030642)
- Donohue, I., and others. 2016. Navigating the complexity of ecological stability. *Ecol. Lett.* **19**: 1172–1185. doi: [10.1111/ele.12648](https://doi.org/10.1111/ele.12648)
- Dubilier, N., C. Bergin, and C. Lott. 2008. Symbiotic diversity in marine animals: The art of harnessing chemosynthesis. *Nat. Rev. Microbiol.* **6**: 725–740. doi: [10.1038/nrmicro1992](https://doi.org/10.1038/nrmicro1992)
- Dunn, D. C., and others. 2018. A strategy for the conservation of biodiversity on mid-ocean ridges from deep-sea mining. *Sci. Adv.* **4**: eaar4313. doi: [10.1126/sciadv.aar4313](https://doi.org/10.1126/sciadv.aar4313)
- Durden, J. M., L. E. Lallier, K. Murphy, A. Jaekel, K. Gjerde, and D. O. B. Jones. 2018. Environmental impact assessment process for deep-sea mining in ‘the area’. *Mar. Policy* **87**: 194–202. doi: [10.1016/j.marpol.2017.10.013](https://doi.org/10.1016/j.marpol.2017.10.013)
- Edgcomb, V. P., D. T. Kysela, A. Teske, A. de Vera Gomez, and M. L. Sogin. 2002. Benthic eukaryotic diversity in the Guaymas Basin hydrothermal vent environment. *Proc. Natl. Acad. Sci. USA* **99**: 7658–7662. doi: [10.1073/pnas.062186399](https://doi.org/10.1073/pnas.062186399)
- Erickson, K. L., S. A. Macko, and C. L. Van Dover. 2009. Evidence for chemoautotrophically based food web at inactive hydrothermal vents (Manus Basin). *Deep-Sea Res. Part II Top. Stud. Oceanogr.* **56**: 1577–1585. doi: [10.1016/j.dsr2.2009.05.002](https://doi.org/10.1016/j.dsr2.2009.05.002)
- Etnoyer, P. J., J. Wood, and T. C. Shirley. 2010. How large is the seamount biome. *Oceanography* **23**: 206–209. doi: [10.5670/oceanog.2010.96](https://doi.org/10.5670/oceanog.2010.96)
- Fallon, E. K., S. Petersen, R. A. Brooker, and T. B. Scott. 2017. Oxidative dissolution of hydrothermal mixed-sulphide ore: An assessment of current knowledge in relation to seafloor massive sulphide mining. *Ore Geol. Rev.* **86**: 309–337. doi: [10.1016/j.oregeorev.2017.02.028](https://doi.org/10.1016/j.oregeorev.2017.02.028)
- Fallon, E. K., E. Niehorster, R. A. Brooker, and T. B. Scott. 2018. Experimental leaching of massive sulphide from TAG active hydrothermal mound and implications for seafloor mining. *Mar. Pollut. Bull.* **126**: 501–515. doi: [10.1016/j.marpolbul.2017.10.079](https://doi.org/10.1016/j.marpolbul.2017.10.079)
- Fisher, A. T., and others. 2003. Hydrothermal recharge and discharge across 50 km guided by seamounts on a young ridge flank. *Nature* **421**: 618–621. doi: [10.1038/nature01352](https://doi.org/10.1038/nature01352)
- Fisher, A. T., and C. G. Wheat. 2010. Seamounts as conduits for massive fluid, heat, and solute fluxes on ridge flanks. *Oceanography* **23**: 74–87. doi: [10.5670/oceanog.2010.63](https://doi.org/10.5670/oceanog.2010.63)
- Fisher, C. R., K. Takai, and N. le Bris. 2007. Hydrothermal vent ecosystems. *Oceanography* **20**: 14–23. doi: [10.5670/oceanog.2007.75](https://doi.org/10.5670/oceanog.2007.75)
- Fortunato, C. S., and J. A. Huber. 2016. Coupled RNA-SIP and metatranscriptomics of active chemolithoautotrophic communities at a deep-sea hydrothermal vent. *ISME J.* **10**: 1925–1938. doi: [10.1038/ismej.2015.258](https://doi.org/10.1038/ismej.2015.258)
- Fortunato, C. S., B. Larson, D. A. Butterfield, and J. A. Huber. 2018. Spatially distinct, temporally stable microbial

- populations mediate biogeochemical cycling at and below the seafloor in hydrothermal vent fluids. *Environ. Microbiol.* **20**: 769–784. doi: [10.1111/1462-2920.14011](https://doi.org/10.1111/1462-2920.14011)
- Fouquet, Y., and others. 2010. Geodiversity of hydrothermal processes along the Mid-Atlantic Ridge and ultramafic-hosted mineralization: A new type of oceanic Cu-Zn-Co-Au volcanogenic massive sulfide deposit, p. 321–367. *In* P. A. Rona, C. W. Devey, J. Dymont, B. J. Murton [eds.], *Diversity of hydrothermal system on slow spreading ocean ridges*. American Geophysical Union.
- Frank, M., R. O’Nions, J. Hein, and V. Banakar. 1999. 60 Myr records of major elements and Pb–Nd isotopes from hydrogenous ferromanganese crusts: Reconstruction of seawater paleochemistry. *Geochim. Cosmochim. Acta* **63**: 1689–1708.
- Fuchida, S., J. Ishibashi, T. Nozaki, Y. Matsushita, M. Kawachi, and H. Koshikawa. 2019. Metal mobility from hydrothermal sulfides into seawater during deep seafloor mining operations, p. 213–229. *In* R. Sharma [ed.], *Environmental issues of deep-sea mining*. Springer. doi: [10.1007/978-3-030-12696-4\\_8](https://doi.org/10.1007/978-3-030-12696-4_8)
- German, C. R., S. Petersen, and M. D. Hannington. 2016. Hydrothermal exploration of mid-ocean ridges: Where might the largest sulfide deposits be forming? *Chem. Geol.* **420**: 114–126. doi: [10.1016/j.chemgeo.2015.11.006](https://doi.org/10.1016/j.chemgeo.2015.11.006)
- Gjerde, K.M., and others. 2016. Implications of MIDAS results for policy makers: Recommendation for future regulations. Available from [http://www.eu-midas.net/sites/default/files/deliverables/D9.6\\_FINAL\\_lowres.pdf](http://www.eu-midas.net/sites/default/files/deliverables/D9.6_FINAL_lowres.pdf)
- Glasby, G., R. Gwozdz, H. Kunzendorf, G. Friedrich, and T. Thijssen. 1987. The distribution of rare earth and minor elements in manganese nodules and sediments from the equatorial and SW Pacific. *Lithos* **20**: 97–113. doi: [10.1016/0024-4937\(87\)90001-6](https://doi.org/10.1016/0024-4937(87)90001-6)
- Gollner, S., B. Reimer, R. P. Arbizu, N. le Bris, and M. Bright. 2010. Diversity of meiofauna from the 9°50’N East Pacific Rise across a gradient of hydrothermal fluid emissions. *PLoS One* **5**: e12321. doi: [10.1371/journal.pone.0012321](https://doi.org/10.1371/journal.pone.0012321)
- Gollner, S., B. Govenar, P. M. Arbizu, S. Mills, N. le Bris, M. Weinbauer, T. M. Shank, and M. Bright. 2015. Differences in recovery between deep-sea hydrothermal vent and vent-proximate communities after a volcanic eruption. *Deep-Sea Res. Part I Oceanogr. Res. Pap.* **106**: 167–182. doi: [10.1016/j.dsr.2015.10.008](https://doi.org/10.1016/j.dsr.2015.10.008)
- Han, Y., and others. 2018. Hydrothermal chimneys host habitat-specific microbial communities: Analogues for studying the possible impact of mining seafloor massive sulfide deposits. *Sci. Rep.* **8**: 10386. doi: [10.1038/s41598-018-28613-5](https://doi.org/10.1038/s41598-018-28613-5)
- Hannington, M. D., J. Jamieson, T. Monecke, S. Petersen, and S. Beaulieu. 2011. The abundance of seafloor massive sulfide deposits. *Geology* **39**: 1155–1158. doi: [10.1130/G32468.1](https://doi.org/10.1130/G32468.1)
- Hansel, C., and D. Learman. 2015. The geomicrobiology of manganese, p. 347–420. *In* Ehrlich, Henry Lutz, Dianne K. Newman, and Andreas, Kappler [eds.], *Erlich’s geomicrobiology*. CRC press.
- Hansel, C. M. 2017. Manganese in marine microbiology, p. 37–83. *In* R. Poole [eds.], *Advances in microbial physiology*. Elsevier.
- Hartwell, A. M., J. R. Voight, and C. G. Wheat. 2018. Clusters of deep-sea egg-brooding octopods associated with warm fluid discharge: An ill-fated fragment of a larger, discrete population? *Deep-Sea Res. Part I Oceanogr. Res. Pap.* **135**: 1–8. doi: [10.1016/j.dsr.2018.03.011](https://doi.org/10.1016/j.dsr.2018.03.011)
- Hauton, C., and others. 2017. Identifying toxic impacts of metals potentially released during deep-sea mining - a synthesis of the challenges to quantifying risk. *Front. Mar. Sci.* **4**: 368. doi: [10.3389/fmars.2017.00368](https://doi.org/10.3389/fmars.2017.00368)
- He, T., H. Li, and X. Zhang. 2017. Deep-sea hydrothermal vent viruses compensate for microbial metabolism in virus-host interactions. *mBio* **8**: e00893–17. doi: [10.1128/mBio.00893-17](https://doi.org/10.1128/mBio.00893-17)
- Hein, J. R., K. Mizell, A. Koschinsky, and T. A. Conrad. 2013. Deep-ocean mineral deposits as a source of critical metals for high- and green-technology applications: Comparison with land-based resources. *Ore Geol. Rev.* **51**: 1–14. doi: [10.1016/j.oregeorev.2012.12.001](https://doi.org/10.1016/j.oregeorev.2012.12.001)
- Henocque, Y. 2017. The crafting of seabed mining ecosystem-based management, p. 507–526. *In* R. Sharma [ed.], *Deep-sea mining*. Springer. doi: [10.1007/978-3-319-52557-0\\_18](https://doi.org/10.1007/978-3-319-52557-0_18)
- Hoagland, P., and others. 2010. Deep-sea mining of seafloor massive sulfides. *Mar. Policy* **34**: 728–732. doi: [10.1016/j.marpol.2009.12.001](https://doi.org/10.1016/j.marpol.2009.12.001)
- Hoffman, C. L., and others. 2018. Near-field iron and carbon chemistry of non-buoyant hydrothermal plume particles, Southern East Pacific Rise 15° S. *Mar. Chem.* **201**: 183–197. doi: [10.1016/j.marchem.2018.01.011](https://doi.org/10.1016/j.marchem.2018.01.011)
- Holden, J. F., J. A. Breier, K. L. Rogers, M. D. Schulte, and B. M. Toner. 2012. Biogeochemical processes at hydrothermal vents: Microbes and minerals, bioenergetics, and carbon fluxes. *Oceanography* **25**: 196–208. doi: [10.5670/oceanog.2012.18](https://doi.org/10.5670/oceanog.2012.18)
- Holmes, T. M., Z. Chase, P. van der Merwe, A. T. Townsend, and A. R. Bowie. 2017. Detection, dispersal and biogeochemical contribution of hydrothermal iron in the ocean. *Mar. Freshw. Res.* **68**: 2184–2204. doi: [10.1071/MF16335](https://doi.org/10.1071/MF16335)
- Huber, J. A., D. A. Butterfield, and J. A. Baross. 2002. Temporal changes in archaeal diversity and chemistry in a mid-ocean ridge subsurface habitat. *Appl. Environ. Microbiol.* **68**: 1585–1594. doi: [10.1128/aem.68.4.1585-1594.2002](https://doi.org/10.1128/aem.68.4.1585-1594.2002)
- Huber, J. A., and J. F. Holden. 2008. Modeling the impact of diffuse vent microorganisms along mid-ocean ridges and flanks, p. 215–231. *In* R. P. Lowell, J. S. Seewald, A. Metaxas, and M. R. Perfit [eds.], *Magma to microbe: Modeling hydrothermal processes at oceanic spreading ridges*. American Geophysical Union Press. doi: [10.1029/178GM11](https://doi.org/10.1029/178GM11)



- Huber, J. A., H. V. Cantin, S. M. Huse, D. B. Mark Welch, M. L. Sogin, and D. A. Butterfield. 2010. Isolated communities of Epsilonproteobacteria in hydrothermal vent fluids of the Mariana Arc seamounts. *FEMS Microbiol. Ecol.* **73**: 538–549. doi: [10.1111/j.1574-6941.2010.00910.x](https://doi.org/10.1111/j.1574-6941.2010.00910.x)
- Hughes, D. J., T. M. Shimmield, K. D. Black, and J. A. Howe. 2015. Ecological impacts of large-scale disposal of mining waste in the deep sea. *Sci. Rep.* **5**: 9985. doi: [10.1038/srep09985](https://doi.org/10.1038/srep09985)
- Hülse, D., S. Arndt, J. D. Wilson, G. Munhoven, and A. Ridgwell. 2017. Understanding the causes and consequences of past marine carbon cycling variability through models. *Earth Sci. Rev.* **171**: 349–382. doi: [10.1016/j.earsci.2017.06.004](https://doi.org/10.1016/j.earsci.2017.06.004)
- Huo, Y., H. Cheng, A. F. Post, C. Wang, X. Jiang, J. Pan, M. Wu, and X. Xu. 2015. Ecological functions of uncultured microorganisms in the cobalt-rich ferromanganese crust of a seamount in the Central Pacific are elucidated by fosmid sequencing. *Acta Oceanol. Sin.* **34**: 92–113. doi: [10.1007/s13131-015-0650-7](https://doi.org/10.1007/s13131-015-0650-7)
- International Seabed Authority. 2012. Environmental management needs for exploration and exploitation of deep sea minerals: Report of a workshop held by the International Seabed Authority in collaboration with the Government of Fiji and the SOPAC Division of the Secretariat of the Pacific Community in Nadi, Fiji, from 29 November to 2 December, 2011. ISA Technical Study 10 International Seabed Authority.
- International Seabed Authority. 2013a. Recommendation for the guidance of contractors for the assessment of the possible environmental impacts arising from exploration for marine minerals in the area. Document: ISBA/19/LTC/8 International Seabed Authority.
- International Seabed Authority. 2013b. Towards the development of a regulatory framework for polymetallic nodule exploitation in the area. Technical study: No. 11. International Seabed Authority, p. 90.
- International Seabed Authority. 2018a. Design of IRZs and PRZs in deep-sea mining contract areas. Briefing Paper 02/2018. International Seabed Authority.
- International Seabed Authority. 2018b. Draft regulations on exploitation of mineral resources in the area. International Seabed Authority.
- Resolution WCC-2016-Res-059, Motion 64, of the IUCN World Conservation Congress, Hawai'i. 2016. Policy on biodiversity offsets. Available from [https://www.iucn.org/sites/dev/files/import/downloads/iucn\\_biodiversity\\_offsets\\_policy\\_jan\\_29\\_2016.pdf](https://www.iucn.org/sites/dev/files/import/downloads/iucn_biodiversity_offsets_policy_jan_29_2016.pdf)
- Jamieson, J. W., and others. 2013. Sulfide geochronology along the endeavour segment of the Juan de Fuca Ridge. *Geochem. Geophys. Geosyst.* **14**: 2084–2099. doi: [10.1002/ggge.20133](https://doi.org/10.1002/ggge.20133)
- Jannasch, H., and C. O. Wirsen. 1979. Chemosynthetic primary production at the East Pacific sea floor spreading centers. *BioScience* **29**: 592–598. doi: [10.2307/1307765](https://doi.org/10.2307/1307765)
- Jeong, K., J. Kang, and S. Chough. 1994. Sedimentary processes and manganese nodule formation in the Korea Deep Ocean Study (KODOS) area, western part of Clarion-Clipperton fracture zones, northeast equatorial Pacific. *Mar. Geol.* **122**: 125–150. doi: [10.1016/0025-3227\(94\)90208-9](https://doi.org/10.1016/0025-3227(94)90208-9)
- Jin, Q., and M. F. Kirk. 2018. pH as a primary control in environmental microbiology: 1. Thermodynamic perspective. *Front. Environ. Sci.* **6**: 21. doi: [10.3389/FENVS.2018.00021](https://doi.org/10.3389/FENVS.2018.00021)
- Johnson, D. B. 2003. Chemical and microbiological characteristics of mineral spoils and drainage waters at abandoned coal and metal mines. *Water Air Soil Pollut. Focus* **3**: 47–66. doi: [10.1023/A:1022107520836](https://doi.org/10.1023/A:1022107520836)
- Jones, D. O. B., and others. 2017. Biological responses to disturbance from simulated deep-sea polymetallic nodule mining. *PLoS One* **12**: e0171750. doi: [10.1371/journal.pone.0171750](https://doi.org/10.1371/journal.pone.0171750)
- Jones, D. O. B., D. J. Amon, and A. S. A. Chapman. 2018. Mining deep-ocean mineral deposits: What are the ecological risks? *Elements* **14**: 325–330. doi: [10.2138/gselements.14.5.325](https://doi.org/10.2138/gselements.14.5.325)
- Jones, S. G., and D. V. Ellis. 1995. Deep water STD at the Misima gold and silver mine, Papua, New Guinea. *Mar. Georesour. Geotechnol.* **13**: 183–200. doi: [10.1080/10641199509388283](https://doi.org/10.1080/10641199509388283)
- Juliani, C., and S. L. Ellefmo. 2018. Resource assessment of undiscovered seafloor massive sulfide deposits on an Arctic mid-ocean ridge: Application of grade and tonnage models. *Ore Geol. Rev.* **102**: 818–828. doi: [10.1016/J.OREGEOREV.2018.10.002](https://doi.org/10.1016/J.OREGEOREV.2018.10.002)
- Jung, H.-S., Y.-T. Ko, S.-B. Chi, and J.-W. Moon. 2001. Characteristics of seafloor morphology and ferromanganese module occurrence in the Korea Deep-Sea Environmental Study (KODES) area, NE equatorial Pacific. *Mar. Georesour. Geotechnol.* **19**: 167–180. doi: [10.1080/10641190109353811](https://doi.org/10.1080/10641190109353811)
- Karl, D. M., C. O. Wirsen, and H. W. Jannasch. 1980. Deep-sea primary production at the Galapagos hydrothermal vents. *Science* **207**: 1345–1347. doi: [10.1126/science.207.4437.1345](https://doi.org/10.1126/science.207.4437.1345)
- Kasten, S., G. Glasby, H. Schulz, G. Friedrich, and S. Andreev. 1998. Rare earth elements in manganese nodules from the South Atlantic Ocean as indicators of oceanic bottom water flow. *Mar. Geol.* **146**: 33–52. doi: [10.1016/S0025-3227\(97\)00128-X](https://doi.org/10.1016/S0025-3227(97)00128-X)
- Kato, S., Y. Takano, T. Kakegawa, H. Oba, K. Inoue, and C. Kobayashi. 2010. Biogeography and biodiversity in sulfide structures of active and inactive vents at deep-sea hydrothermal fields of the southern Mariana Trough. *Appl. Environ. Microbiol.* **76**: 2968–2979. doi: [10.1128/AEM.00478-10](https://doi.org/10.1128/AEM.00478-10)
- Kermer, R., and others. 2012. Elucidation of carbon transfer in a mixed culture of *Acidiphilium cryptum* and *Acidithiobacillus ferroxidans* using protein-based stable isotope probing. *J. Integr. OMICS* **2**: 37–45. doi: [10.5584/jiomics.v2i1.85](https://doi.org/10.5584/jiomics.v2i1.85)
- Khripounoff, A., J.-C. Caprais, P. Crassous, and J. Etoubleau. 2006. Geochemical and biological recovery of the disturbed

- seafloor in polymetallic nodule fields of the Clipperton-Clarion Fracture Zone (CCFZ) at 5000-m depth. *Limnol. Oceanogr.* **51**: 2033–2041. doi: [10.4319/lo.2006.51.5.2033](https://doi.org/10.4319/lo.2006.51.5.2033)
- Kim, J., K. Hyeong, H.-B. Lee, and Y.-T. Ko. 2012. Relationship between polymetallic nodule genesis and sediment distribution in the KODOS (Korea Deep Ocean Study) Area, Northeastern Pacific. *Ocean Sci. J.* **47**: 197–207. doi: [10.1007/s12601-012-0020-8](https://doi.org/10.1007/s12601-012-0020-8)
- Kline, E. R., and M. S. Stekoll. 2001. Colonization of mine tailings by marine invertebrates. *Mar. Environ. Res.* **51**: 301–325. doi: [10.1016/S0141-1136\(00\)00105-7](https://doi.org/10.1016/S0141-1136(00)00105-7)
- Kong, H. M., R. B. Kucera, and W. E. Jack. 1993. Characterization of a DNA polymerase from the hyperthermophilic archaea *Thermococcus litoralis*. Vent DNA polymerase, steady state kinetics, thermal stability, processivity, strand displacement, and exonuclease activities. *J. Biol. Chem.* **268**: 1965–1975.
- Koschinsky, A., and others. 2018. Deep-sea mining: Interdisciplinary research on potential environmental, legal, economic, and societal implications. *Integr. Environ. Assess. Manag.* **14**: 672–691. doi: [10.1002/ieam.4071](https://doi.org/10.1002/ieam.4071)
- Krishnan, K., C. E. Fernandes, S. O. Fernandes, and P. L. Bharathi. 2006. Tolerance and immobilization of cobalt by some bacteria from ferromanganese crusts of the Afanasiy Nikitin Seamounts. *Geomicrobiol. J.* **23**: 31–36. doi: [10.1080/01490450500398286](https://doi.org/10.1080/01490450500398286)
- Ku, T.-L., and W. S. Broecker. 1965. Rates of sedimentation in the Arctic Ocean. *Prog. Oceanogr.* **4**: 95–104. doi: [10.1016/0079-6611\(65\)90043-1](https://doi.org/10.1016/0079-6611(65)90043-1)
- Kyodo News. 2017. Japan successfully undertakes large-scale deep-sea mineral extraction. *The Japan Times*, Sept. 26, 2017.
- Lee, M. D., N. G. Walworth, J. B. Sylvan, K. J. Edwards, and B. N. Orcutt. 2015. Microbial communities on seafloor basalts at Dorado Outcrop reflect level of alteration and highlight global lithic clades. *Front. Microbiol.* **6**: 1470. doi: [10.3389/fmicb.2015.01470](https://doi.org/10.3389/fmicb.2015.01470)
- Levin, L. A., A. R. Baco, D. A. Bowden, A. Colaco, E. E. Cordes, and M. R. Cunha. 2016a. Hydrothermal vents and methane seeps: Rethinking the sphere of influence. *Front. Mar. Sci.* **3**: 72. doi: [10.3389/fmars.2016.00072](https://doi.org/10.3389/fmars.2016.00072)
- Levin, L. A., K. Mengerink, K. Gjerde, A. A. Rowden, C. L. Van Dover, and M. R. Clark. 2016b. Defining “serious harm” to the marine environment in the context of deep seabed mining. *Mar. Policy* **74**: 245–259. doi: [10.1016/j.marpol.2016.09.032](https://doi.org/10.1016/j.marpol.2016.09.032)
- Liao, L., and others. 2011. Microbial diversity in deep-sea sediment from the cobalt-rich crust deposit region in the Pacific Ocean. *FEMS Microbiol. Ecol.* **78**: 565–585. doi: [10.1111/j.1574-6941.2011.01186.x](https://doi.org/10.1111/j.1574-6941.2011.01186.x)
- Lindh, M. V., and others. 2017. From the surface to the deep-sea: Bacterial distributions across polymetallic nodule fields in the Clarion-Clipperton Zone of the Pacific Ocean. *Front. Microbiol.* **8**. doi: [10.3389/fmicb.2017.01696](https://doi.org/10.3389/fmicb.2017.01696)
- López-García, P., A. Vereshchaka, and D. Moreira. 2007. Eukaryotic diversity associated with carbonates and fluid-seawater interface in Lost City hydrothermal field. *Environ. Microbiol.* **9**: 546–554. doi: [10.1111/j.1462-2920.2006.01158.x](https://doi.org/10.1111/j.1462-2920.2006.01158.x)
- Lowell, R. P., J. L. Houghton, A. Farough, K. L. Craft, B. I. Larson, and C. Meile. 2015. Mathematical modeling of diffuse flow in seafloor hydrothermal systems: The potential extent of the subsurface biosphere at mid-ocean ridges. *Earth Planet. Sci. Lett.* **425**: 145–153. doi: [10.1016/j.epsl.2015.05.047](https://doi.org/10.1016/j.epsl.2015.05.047)
- Lundberg, K. S., D. D. Shoemaker, M. W. W. Adams, J. M. Short, J. A. Sorge, and E. J. Mather. 1991. High-fidelity amplification using a thermostable DNA polymerase isolated from *Pyrococcus furiosus*. *Gene* **108**: 1–6. doi: [10.1016/0378-1119\(91\)90480-Y](https://doi.org/10.1016/0378-1119(91)90480-Y)
- Luther, G. W. 2010. The role of one- and two-electron transfer reactions in forming thermodynamically unstable intermediates as barriers in multi-electron redox reactions. *Aquat. Geochem.* **16**: 395–420. doi: [10.1007/s10498-009-9082-3](https://doi.org/10.1007/s10498-009-9082-3)
- Maeda, A., and others. 2017. Evaluation of oxygen isotope and Mg/Ca ratios in high-magnesium calcite from benthic foraminifera as a proxy for water temperature. *J. Geophys. Res. Biogeosci.* **122**: 185–199. doi: [10.1002/2016jg003587](https://doi.org/10.1002/2016jg003587)
- Marsay, C. M., R. J. Sanders, S. A. Henson, K. Pabortsava, E. P. Achterberg, and R. S. Lampitt. 2015. Attenuation of sinking particulate organic carbon flux through the mesopelagic ocean. *Proc. Natl. Acad. Sci. USA* **112**: 1089–1094. doi: [10.1073/pnas.1415311112](https://doi.org/10.1073/pnas.1415311112)
- Martin, W., J. Baross, D. Kelley, and M. J. Russell. 2008. Hydrothermal vents and the origin of life. *Nat. Rev. Microbiol.* **6**: 805–814. doi: [10.1038/nrmicro1991](https://doi.org/10.1038/nrmicro1991)
- Martins, A., H. Viera, H. Gaspar, and S. Santos. 2014. Marketed marine natural products in the pharmaceutical and cosmeceutical industries: Tips for success. *Mar. Drugs* **12**: 1066–1101. doi: [10.3390/md12021066](https://doi.org/10.3390/md12021066)
- McNichol, J., and others. 2018. Primary productivity below the seafloor at deep-sea hot springs. *Proc. Natl. Acad. Sci. USA* **115**: 6756–6761. doi: [10.1073/pnas.1804351115](https://doi.org/10.1073/pnas.1804351115)
- Mehta, M. P., and J. A. Baross. 2006. Nitrogen fixation at 92°C by a hydrothermal vent archaeon. *Science* **314**: 1783–1786. doi: [10.1126/science.1134772](https://doi.org/10.1126/science.1134772)
- Meier, D. V., and others. 2017. Niche partitioning of diverse sulfur-oxidizing bacteria at hydrothermal vents. *ISME J.* **11**: 1545–1558. doi: [10.1038/ismej.2017.37](https://doi.org/10.1038/ismej.2017.37)
- Mestre, N. C., and others. 2017. Environmental hazard assessment of a marine mine tailings deposit site and potential implication for deep-sea mining. *Environ. Pollut.* **228**: 169–178. doi: [10.1016/j.envpol.2017.05.027](https://doi.org/10.1016/j.envpol.2017.05.027)
- Mewes, K., and others. 2014. Impact of depositional and biogeochemical processes on small scale variations in nodule abundance in the Clarion-Clipperton Fracture Zone. *Deep-Sea Res. Part I Oceanogr. Res. Pap.* **91**: 125–141. doi: [10.1016/j.dsr.2014.06.001](https://doi.org/10.1016/j.dsr.2014.06.001)
- Meyer, J. L., N. H. Akerman, G. Proskurowski, and J. A. Huber. 2013. Microbiological characterization of post-eruption

- “snowblower” vents at Axial Seamount, Juan de Fuca Ridge. *Front. Microbiol.* **4**: 153. doi: [10.3389/fmicb.2013.00153](https://doi.org/10.3389/fmicb.2013.00153)
- Middleton, J. L., S. Mukhopadhyay, C. H. Langmuir, J. F. McManus, and P. J. Huybers. 2018. Millennial-scale variations in dustiness recorded in Mid-Atlantic sediments from 0 to 70 ka. *Earth Planet. Sci. Lett.* **482**: 12–22. doi: [10.1016/j.epsl.2017.10.034](https://doi.org/10.1016/j.epsl.2017.10.034)
- Miller, K. A., K. F. Thompson, P. Johnston, and D. Santillo. 2018. An overview of seabed mining including the current state of development, environmental impacts, and knowledge gaps. *Front. Mar. Sci.* **4**: 418. doi: [10.3389/fmars.2017.00418](https://doi.org/10.3389/fmars.2017.00418)
- Murali Mohan, A., A. Hartsock, K. J. Bibby, R. W. Hammack, R. D. Vidic, and K. B. Gregory. 2013. Microbial community changes in hydraulic fracturing fluids and produced water from shale gas extraction. *Environ. Sci. Technol.* **47**: 13141–13150. doi: [10.1021/es402928b](https://doi.org/10.1021/es402928b)
- Murdoch, S. A., and S. K. Juniper. 2019. Hydrothermal vent protistan distribution along the Mariana Arc suggests vent endemics are rare and novel. *Environ. Microbiol.* **21**: 3796–3815. doi: [10.1111/1462-2920.14729](https://doi.org/10.1111/1462-2920.14729)
- Nasir, A., K. M. Kim, and G. Caetano-Anollés. 2015. Lokiarchaeota: Eukaryote-like missing links from microbial dark matter? *Trends Microbiol.* **23**: 448–450. doi: [10.1016/j.tim.2015.06.001](https://doi.org/10.1016/j.tim.2015.06.001)
- Nath, B. N., and others. 2012. Monitoring the sedimentary carbon in an artificially disturbed deep-sea sedimentary environment. *Environ. Monit. Assess.* **184**: 2829–2844. doi: [10.1007/s10661-011-2154-z](https://doi.org/10.1007/s10661-011-2154-z)
- Navarri, M., and others. 2016. Deep seafloor fungi as an untapped reservoir of amphipathic antimicrobial compounds. *Mar. Drugs* **14**: 50. doi: [10.3390/md14030050](https://doi.org/10.3390/md14030050)
- Niner, H. J., and others. 2018. Deep-sea mining with no net loss of biodiversity - an impossible aim. *Front. Mar. Sci.* **5**: 53. doi: [10.3389/fmars.2018.00053](https://doi.org/10.3389/fmars.2018.00053)
- Nisbet, E., and N. H. Sleep. 2001. The habitat and nature of early life. *Nature* **409**: 1083–1091. doi: [10.1038/35059210](https://doi.org/10.1038/35059210)
- Nitahara, S., S. Kato, T. Urabe, A. Usui, and A. Yamagishi. 2011. Molecular characterization of the microbial community in hydrogenetic ferromanganese crusts of the Takuyo-Daigo Seamount, northwest Pacific. *FEMS Microbiol. Lett.* **321**: 121–129. doi: [10.1111/j.1574-6968.2011.02323.x](https://doi.org/10.1111/j.1574-6968.2011.02323.x)
- Nordstrom, D. K. 2011. Mine waters: Acidic to circumneutral. *Elements* **7**: 393–398. doi: [10.2113/gselements.7.6.393](https://doi.org/10.2113/gselements.7.6.393)
- Nordstrom, D. K., D. W. Blowes, and C. J. Ptacek. 2015. Hydrogeochemistry and microbiology of mine drainage: An update. *Appl. Geochem.* **57**: 3–16. doi: [10.1016/j.apgeochem.2015.02.008](https://doi.org/10.1016/j.apgeochem.2015.02.008)
- O’Brien, C. E., and others. 2015. Microbial biofilms associated with fluid chemistry and megafaunal colonization at post-eruptive deep-sea hydrothermal vents. *Deep-Sea Res. Part II Top. Stud. Oceanogr.* **121**: 31–40. doi: [10.1016/j.dsr2.2015.07.020](https://doi.org/10.1016/j.dsr2.2015.07.020)
- OECD. 2016. Biodiversity Offsets: Effective Design and Implementation. OECD Publishing.
- Olins, H., D. Rogers, K. Frank, C. Vidoudez, and P. Girguis. 2013. Assessing the influence of physical, geochemical and biological factors on anaerobic microbial primary productivity within hydrothermal vent chimneys. *Geobiology* **11**: 279–293. doi: [10.1111/gbi.12034](https://doi.org/10.1111/gbi.12034)
- Opatkiewicz, A. D., D. A. Butterfield, and J. A. Baross. 2009. Individual hydrothermal vents at Axial Seamount harbor distinct seafloor microbial communities. *FEMS Microbiol. Ecol.* **70**: 413–424. doi: [10.1111/j.1574-6941.2009.00747.x](https://doi.org/10.1111/j.1574-6941.2009.00747.x)
- Orcutt, B. N., J. B. Sylvan, N. J. Knab, and K. J. Edwards. 2011. Microbial ecology of the dark ocean above, at, and below the seafloor. *Microbiol. Mol. Biol. Rev.* **75**: 361–422. doi: [10.1128/MMBR.00039-10](https://doi.org/10.1128/MMBR.00039-10)
- Orcutt, B. N., J. B. Sylvan, D. R. Rogers, J. Delaney, R. W. Lee, and P. R. Girguis. 2015. Carbon fixation by basalt-hosted microbial communities. *Front. Microbiol.* **6**: 904. doi: [10.3389/fmicb.2015.00904](https://doi.org/10.3389/fmicb.2015.00904)
- Ornella Amore, F., M. Caffau, B. Massa, and S. Morabito. 2004. Late Pleistocene–Holocene paleoclimate and related paleoenvironmental changes as recorded by calcareous nannofossils and planktonic foraminifera assemblages in the southern Tyrrhenian Sea (Cape Palinuro, Italy). *Mar. Micropaleontol.* **52**: 255–276. doi: [10.1016/j.marmicro.2004.05.004](https://doi.org/10.1016/j.marmicro.2004.05.004)
- Ortmann, A. C., and C. A. Suttle. 2005. High abundances of viruses in a deep-sea hydrothermal vent system indicates viral mediated microbial mortality. *Deep-Sea Res. Part I Oceanogr. Res. Pap.* **52**: 1515–1527. doi: [10.1016/j.dsr.2005.04.002](https://doi.org/10.1016/j.dsr.2005.04.002)
- Park, S. H., D. H. Kim, C. W. Kim, C. Y. Park, and J. K. Kang. 1997. Estimation of coverage and size distribution on manganese nodules based on image processing techniques. *In* Second ISOPE Ocean Mining Symposium, 24–26 November 2017, Seoul, Korea. International Society of Offshore and Polar Engineers.
- Paul, S. A. L., B. Gaye, M. Haeckel, S. Kasten, and A. Koschinsky. 2018. Biogeochemical regeneration of a nodule mining disturbance site: Trace metals, DOC and amino acids in deep-sea sediments and pore waters. *Front. Mar. Sci.* **5**: 117. doi: [10.3389/fmars.2018.00117](https://doi.org/10.3389/fmars.2018.00117)
- Pedersen, S., B. Lehrmann, and B. J. Murton. 2018. Modern seafloor hydrothermal systems: New perspectives on ancient ore-forming processes. *Elements* **14**: 307–312. doi: [10.2138/gselements.14.5.307](https://doi.org/10.2138/gselements.14.5.307)
- Pedersen, T. F. 1984. Interstitial water metabolite chemistry in a marine mine tailings deposit, Rupert inlet, B. C. *Can. J. Earth Sci.* **21**: 1–9. doi: [10.1139/e84-001](https://doi.org/10.1139/e84-001)
- Pedersen, T. F., and A. J. Losher. 1988. Diagenetic processes in aquatic mine tailings deposits in British Columbia, p. 238–258. *In* W. Salomons, U. Förstner [eds.], *Chemistry and biology of solid waste*. Springer.
- Penesyan, A., S. Kjelleberg, and S. Egan. 2010. Development of novel drugs from marine surface associated microorganisms. *Mar. Drugs* **8**: 438–459. doi: [10.3390/md8030438](https://doi.org/10.3390/md8030438)

- Petersen, S., A. Krätschell, N. Augustin, J. Jamieson, J. R. Hein, and M. D. Hannington. 2016. News from the seabed - geological characteristics and resource potential of deep-sea mineral resources. *Mar. Policy* **70**: 175–187. doi: [10.1016/j.marpol.2016.03.012](https://doi.org/10.1016/j.marpol.2016.03.012)
- Peukert, A., T. Schoening, E. Alevizos, K. Köser, T. Kwasnitschka, and J. Greinert. 2018. Understanding Mn-nodule distribution and evaluation of related deep-sea mining impacts using AUV-based hydroacoustic and optical data. *Biogeosciences* **15**: 2525–2549. doi: [10.5194/bg-15-2525-2018](https://doi.org/10.5194/bg-15-2525-2018)
- Piel, J. 2009. Metabolites from symbiotic bacteria. *Nat. Prod. Rep.* **26**: 338–362. doi: [10.1039/b703499g](https://doi.org/10.1039/b703499g)
- Purser, A., and others. 2016. Association of deep-sea incirrate octopods with mangense crusts and nodule fields in the Pacific Ocean. *Curr. Biol.* **26**: 1268–1269. doi: [10.1016/j.cub.2016.10.052](https://doi.org/10.1016/j.cub.2016.10.052)
- Ramirez-Llodra, E., and others. 2015. Submarine and deep-sea mine tailing placement: A review of current practices, environmental issues, natural analogs and knowledge gaps in Norway and internationally. *Mar. Pollut. Bull.* **97**: 13–35. doi: [10.1016/j.marpolbul.2015.05.062](https://doi.org/10.1016/j.marpolbul.2015.05.062)
- Rea, D. K. 1994. The paleoclimatic record provided by eolian deposition in the deep sea: The geologic history of wind. *Rev. Geophys.* **32**: 159–195. doi: [10.1029/93RG03257](https://doi.org/10.1029/93RG03257)
- Rudnicki, M., R. James, and H. Elderfield. 1994. Near-field variability of the TAG non-buoyant plume, 26 N, Mid-Atlantic Ridge. *Earth Planet. Sci. Lett.* **127**: 1–10. doi: [10.1016/0012-821X\(94\)90193-7](https://doi.org/10.1016/0012-821X(94)90193-7)
- Ruff, S. E., and others. 2019. In situ development of a methanotrophic microbiome in deep-sea sediments. *ISME J.* **13**: 197–213. doi: [10.1038/s41396-018-0263-1](https://doi.org/10.1038/s41396-018-0263-1)
- Russell, M. J., and W. Martin. 2004. The rocky roots of the acetyl-CoA pathway. *Trends Biochem. Sci.* **29**: 358–363. doi: [10.1016/j.tibs.2004.05.007](https://doi.org/10.1016/j.tibs.2004.05.007)
- Santelli, C. M., and others. 2008. Abundance and diversity of microbial life in ocean crust. *Nature* **453**: 653–656. doi: [10.1038/nature06899](https://doi.org/10.1038/nature06899)
- Sapsford, D., L. De Leeuw, J. Phillips, and P. Brabham. 2015. The feasibility of treatment of acid mine drainage with seawater. *In* 10th International Conference on Acid Rock Drainage IWMA Annual Conference, Santiago, Chile. April 21–24, 2015.
- Schippers, A., A. Breuker, A. Blazejak, K. Bosecker, D. Kock, and T. L. Wright. 2010. The biogeochemistry and microbiology of sulfidic mine waste and bioleaching dumps and heaps, and novel Fe(II)-oxidizing bacteria. *Hydrometallurgy* **104**: 342–350. doi: [10.1016/j.hydromet.2010.01.012](https://doi.org/10.1016/j.hydromet.2010.01.012)
- Schrader, H., and R. Sorknes. 1991. Peruvian coastal upwelling: Late quaternary productivity changes revealed by diatoms. *Mar. Geol.* **97**: 233–249. doi: [10.1016/0025-3227\(91\)90118-N](https://doi.org/10.1016/0025-3227(91)90118-N)
- Schrenk, M. O., D. S. Kelley, J. R. Delaney, and J. A. Baross. 2003. Incidence and diversity of microorganisms within the walls of an active deep-sea sulfide chimney. *Appl. Environ. Microbiol.* **69**: 3580–3592. doi: [10.1128/AEM.69.6.3580-3592.2003](https://doi.org/10.1128/AEM.69.6.3580-3592.2003)
- Schrenk, M. O., J. A. Huber, and K. J. Edwards. 2009. Microbial provinces in the seafloor. *Ann. Rev. Mar. Sci.* **2**: 85–110. doi: [10.1146/annurev-marine-120308-081000](https://doi.org/10.1146/annurev-marine-120308-081000)
- Schriever, G., and H. Thiel. 2013. Tailings and their disposal in deep-sea mining. *In* Tenth ISOPE Ocean Mining and Gas Hydrates Symposium, 22–26 September 2013, Szczecin, Poland.
- Seiter, K., C. Hensen, J. Schröter, and M. Zabel. 2004. Organic carbon content in surface sediments—defining regional provinces. *Deep-Sea Res. Part I Oceanogr. Res. Pap.* **51**: 2001–2026. doi: [10.1016/j.dsr.2004.06.014](https://doi.org/10.1016/j.dsr.2004.06.014)
- Shah Walter, S. R., and others. 2018. Microbial decomposition of marine dissolved organic matter in cool oceanic crust. *Nat. Geosci.* **11**: 334–339. doi: [10.1038/s41561-018-0109-5](https://doi.org/10.1038/s41561-018-0109-5)
- Shank, T. M. 2010. Seamounts: Deep-ocean laboratories of faunal connectivity, evolution, and endemism. *Oceanography* **23**: 108–122. doi: [10.5670/oceanog.2010.65](https://doi.org/10.5670/oceanog.2010.65)
- Shi, Y., and others. 2017. Stress-driven discovery of a cryptic antibiotic produced by *Streptomyces* sp. WU20 from Kueishantao hydrothermal vent with an integrated metabolomics strategy. *Appl. Microbiol. Biotechnol.* **101**: 1395–1408. doi: [10.1007/s00253-016-7823-y](https://doi.org/10.1007/s00253-016-7823-y)
- Shimmield, T, K. D. Black, C. Fox, D. Hughes, and J. Howe. 2011. Independent Evaluation of Deep-Sea Mine Tailings Placement (DSTP) in PNG8.ACP.PNG.18-B. A review and evaluation of marine environmental information on Deep Sea Tailings Placement with particular reference to Lihir and Misima mines, Papua New Guinea. SAMS.
- Shiraishi, F., S. Mitsunobu, K. Suzuki, T. Hoshino, Y. Morono, and F. Inagaki. 2016. Dense microbial community on a ferromanganese nodule from the ultra-oligotrophic South Pacific Gyre: Implications for biogeochemical cycles. *Earth Planet. Sci. Lett.* **447**: 10–20. doi: [10.1016/j.epsl.2016.04.021](https://doi.org/10.1016/j.epsl.2016.04.021)
- Shulze, C. N., B. Maillot, C. R. Smith, and M. J. Church. 2017. Polymetallic nodules, sediments, and deep waters in the equatorial North Pacific exhibit highly diverse and distinct bacterial, archaeal, and microeukaryotic communities. *MicrobiologyOpen* **6**: e00428. doi: [10.1002/mbo3.428](https://doi.org/10.1002/mbo3.428)
- Sievert, S. M., and C. Vetrani. 2012. Chemoautotrophy at deep-sea vents: Past, present, and future. *Oceanography* **25**: 218–233. doi: [10.5670/oceanog.2012.21](https://doi.org/10.5670/oceanog.2012.21)
- Simon-Lledó, E., and others. 2019. Megafaunal variation in the abyssal landscape of the Clarion Clipperton Zone. *Prog. Oceanogr.* **170**: 119–133. doi: [10.1016/j.pocan.2018.11.003](https://doi.org/10.1016/j.pocan.2018.11.003)
- Spero, H. J., J. Bijma, D. W. Lea, and B. E. Bemis. 1997. Effect of seawater carbonate concentration on foraminiferal carbon and oxygen isotopes. *Nature* **390**: 497. doi: [10.1038/37333](https://doi.org/10.1038/37333)

- Sujith, P., D. Ramanan, M. J. B. Gonsalves, and P. LokaBharathi. 2017. Microbial activity promotes the enrichment of cobalt over nickel on hydrogenetic ferromanganese crusts. *Mar. Georesour. Geotechnol.* **35**: 1158–1167. doi: [10.1080/1064119X.2017.1298169](https://doi.org/10.1080/1064119X.2017.1298169)
- Suzuki, K., K. Yoshida, H. Watanabe, and H. Yamamoto. 2018. Mapping the resilience of chemosynthetic communities in hydrothermal vent fields. *Nature* **8**: 9364. doi: [10.1038/s41598-018-27596-7](https://doi.org/10.1038/s41598-018-27596-7)
- Suzuki, Y., F. Inagaki, K. Takai, K. H. Nealson, and K. Horikoshi. 2004. Microbial diversity in inactive chimney structures from deep-sea hydrothermal systems. *Microb. Ecol.* **47**: 186–196. doi: [10.1007/s00248-003-1014-y](https://doi.org/10.1007/s00248-003-1014-y)
- Sweetman, A. K., and others. 2019. Key role of bacteria in the short-term cycling of carbon at the abyssal seafloor in a low particulate organic carbon flux region of the eastern Pacific Ocean. *Limnol. Oceanogr.* **64**: 694–713. doi: [10.1002/lno.11069](https://doi.org/10.1002/lno.11069)
- Sylvan, J. B., B. M. Toner, and K. Edwards. 2012. Life and death of deep-sea vents: Bacterial diversity and ecosystem succession on inactive hydrothermal sulfides. *mBio* **3**: e00279–11. doi: [10.1128/mBio.00279-00211](https://doi.org/10.1128/mBio.00279-00211)
- Takai, K., and others. 2008. Cell proliferation at 122°C and isotopically heavy CH<sub>4</sub> production by a hyperthermophilic methanogen under high-pressure cultivation. *Proc. Natl. Acad. Sci. USA* **105**: 10949–10954. doi: [10.1073/pnas.0712334105](https://doi.org/10.1073/pnas.0712334105)
- Thiel, H., and G. Schriever. 1990. Deep-sea mining, environmental impact and the DISCOL project. *Ambio* **19**: 245–250.
- Thiel, H., G. Schriever, A. Ahnert, H. Bluhm, C. Borowski, and K. Vopel. 2001. The large-scale environmental impact experiment DISCOL—reflection and foresight. *Deep-Sea Res. Part II Top. Stud. Oceanogr.* **48**: 3869–3882. doi: [10.1016/S0967-0645\(01\)00071-6](https://doi.org/10.1016/S0967-0645(01)00071-6)
- Thomas, T. R. A., A. Das, and L. B. P. Adikesavan. 2018. A review of the phylogeography of potentially chemoautotrophic bacteria from major vent and seep fauna and their contribution to primary production. *Geomicrobiol. J.* **35**: 612–634. doi: [10.1080/01490451.2018.1440035](https://doi.org/10.1080/01490451.2018.1440035)
- Thompson, K. F., K. A. Miller, D. Currie, P. Johnston, and D. Santillo. 2018. Seabed mining and approaches to governance of the deep seabed. *Front. Mar. Sci.* **5**: 480. doi: [10.3389/fmars.2018.00480](https://doi.org/10.3389/fmars.2018.00480)
- Thornburg, C. C., T. M. Zabriskie, and K. L. McPhail. 2010. Deep-sea hydrothermal vents: Potential hot spots for natural products discovery? *J. Nat. Prod.* **73**: 489–499. doi: [10.1021/np900662k](https://doi.org/10.1021/np900662k)
- Thurber, A. R., A. K. Sweetman, B. E. Narayanaswamy, D. O. Jones, J. Ingels, and R. Hansman. 2014. Ecosystem function and services provided by the deep sea. *Biogeosciences* **11**: 3941–3963. doi: [10.5194/bg-11-3941-2014](https://doi.org/10.5194/bg-11-3941-2014)
- Toner, B. M., and others. 2013. Mineralogy drives bacterial biogeography at hydrothermally-inactive seafloor sulfide deposits. *Geomicrobiol. J.* **30**: 313–326. doi: [10.1080/01490451.2012.688925](https://doi.org/10.1080/01490451.2012.688925)
- Trezza, G., and others. 2016. The influence of a metal-enriched mining waste deposit on submarine groundwater discharge to the coastal sea. *Mar. Chem.* **178**: 35–45. doi: [10.1016/j.marchem.2015.12.004](https://doi.org/10.1016/j.marchem.2015.12.004)
- Tully, B. J., and J. F. Heidelberg. 2013. Microbial communities associated with ferromanganese nodules and the surrounding sediments. *Front. Microbiol.* **4**: 161. doi: [10.3389/fmicb.2013.00161](https://doi.org/10.3389/fmicb.2013.00161)
- Tunnicliffe, V., A. Metaxas, J. Le, E. Ramirez-Llodra, and L. A. Levin. In Press. Strategic environmental goals and objectives: Setting the basis for environmental regulation of deep seabed mining. *Mar. Policy.* doi: [10.1016/j.marpol.2018.11.010](https://doi.org/10.1016/j.marpol.2018.11.010)
- van de Fliedert, T., and others. 2004. Deep and bottom water export from the Southern Ocean to the Pacific over the past 38 million years. *Paleoceanogr. Paleoclimatol.* **19**: PA1020. doi: [10.1029/2003PA000923](https://doi.org/10.1029/2003PA000923)
- Van Dover, C. L. 2000. The ecology of deep-sea hydrothermal vents. Princeton Univ. Press.
- Van Dover, C. L. 2019. Inactive sulfide ecosystems in the deep sea: A review. *Front. Mar. Sci.* **6**: 461. doi: [10.3389/fmars.2019.00461](https://doi.org/10.3389/fmars.2019.00461)
- Van Dover, C. L., and others. 2018. Scientific rationale and international obligations for protection of active hydrothermal vent ecosystems from deep-sea mining. *Mar. Policy* **90**: 20–28. doi: [10.1016/j.marpol.2018.01.020](https://doi.org/10.1016/j.marpol.2018.01.020)
- Vanreusel, A., A. Hilario, A. Ribeiro, L. Menot, and P. M. Arbizu. 2016. Threatened by mining, polymetallic nodules are required to preserve abyssal epifauna. *Sci. Rep.* **6**: 26808. doi: [10.1038/srep26808](https://doi.org/10.1038/srep26808)
- Vare, L. L., and others. 2018. Scientific considerations for the assessment and management of mine tailings disposal in the deep sea. *Front. Mar. Sci.* **5**: 17. doi: [10.3389/fmars.2018.00017](https://doi.org/10.3389/fmars.2018.00017)
- Wang, X., and W. E. G. Müller. 2009. Marine biominerals: Perspectives and challenges for polymetallic nodules and crusts. *Trends Biotechnol.* **27**: 375–383. doi: [10.1016/j.tibtech.2009.03.004](https://doi.org/10.1016/j.tibtech.2009.03.004)
- Wang, X., H. C. Schröder, M. Wiens, U. Schloßmacher, and W. E. G. Müller. 2009. Manganese/polymetallic nodules: Micro-structural characterization of exolithobiontic- and endolithobiontic microbial biofilms by scanning electron microscopy. *Micron* **40**: 350–358. doi: [10.1026/j.micron.2008.10.005](https://doi.org/10.1026/j.micron.2008.10.005)
- Wankel, S. D., and others. 2011. Influence of subsurface biosphere on geochemical fluxes from diffuse hydrothermal vents. *Nat. Geosci.* **4**: 461–468. doi: [10.1038/ngeo1183](https://doi.org/10.1038/ngeo1183)
- Wankel, S. D., M. M. Adams, D. T. Johnston, C. M. Hansel, S. B. Joye, and P. R. Girguis. 2012. Anaerobic methane oxidation in metalliferous hydrothermal sediments: Influence on carbon flux and decoupling from sulfate reduction. *Environ. Microbiol.* **14**: 2726–2740. doi: [10.1111/j.1462-2920.2012.02825.x](https://doi.org/10.1111/j.1462-2920.2012.02825.x)
- Wedding, L. M., and others. 2015. Managing mining of the deep seabed. *Science* **349**: 144–145. doi: [10.1126/science.aac6647](https://doi.org/10.1126/science.aac6647)

- Wegorzewski, A. V., and T. Kuhn. 2014. The influence of sub-oxic diagenesis on the formation of manganese nodules in the Clarion Clipperton nodule belt of the Pacific Ocean. *Mar. Geol.* **357**: 123–138. doi: [10.1016/j.margeo.2014.07.004](https://doi.org/10.1016/j.margeo.2014.07.004)
- Wessel, P., D. T. Sandwell, and S.-S. Kim. 2010. The global seamount census. *Oceanography* **23**: 24–33. doi: [10.5670/oceanog.2010.60](https://doi.org/10.5670/oceanog.2010.60)
- Wheat, C. G., A. T. Fisher, J. McManus, S. M. Hulme, and B. N. Orcutt. 2017. Cool seafloor hydrothermal springs reveal global geochemical fluxes. *Earth Planet. Sci. Lett.* **476**: 179–188. doi: [10.1016/j.epsl.2017.07.049](https://doi.org/10.1016/j.epsl.2017.07.049)
- Wheat, C. G., and others. 2019. Geology and fluid discharge at Dorado Outcrop, a low temperature ridge-flank hydrothermal system. *Geochem. Geophys. Geosyst.* **20**: 487–504. doi: [10.1029/2018GC007933](https://doi.org/10.1029/2018GC007933)
- Williamson, S. J., and others. 2008. Lysogenic virus-host interactions predominate at deep-sea diffuse-flow hydrothermal vents. *ISME J.* **2**: 1112–1121. doi: [10.1038/ismej.2008.73](https://doi.org/10.1038/ismej.2008.73)
- Xie, W., and others. 2011. Comparative metagenomics of microbial communities inhabiting deep-sea hydrothermal vent chimneys with contrasting chemistries. *ISME J.* **5**: 414. doi: [10.1038/ismej.2010.144](https://doi.org/10.1038/ismej.2010.144)
- Xu, C., X. Sun, M. Jin, and X. Zhang. 2017. A novel benzoquinone compound isolated from deep-sea hydrothermal vent triggers apoptosis of tumor cells. *Mar. Drugs* **15**: 200. doi: [10.3390/md15070200](https://doi.org/10.3390/md15070200)
- Zhang, X., S.-J. Li, J.-J. Li, Z.-Z. Liang, and C.-Q. Chao. 2018. Novel natural products from extremophilic fungi. *Mar. Drugs* **16**: 194. doi: [10.3390/md16060194](https://doi.org/10.3390/md16060194)
- Zinke, L. A., B. Kiel Reese, J. McManus, C. G. Wheat, B. N. Orcutt, and J. P. Amend. 2018. Sediment microbial communities

- influenced by cool hydrothermal fluid migration. *Front. Microbiol.* **9**: 1249. doi: [10.3389/fmicb.2018.01249](https://doi.org/10.3389/fmicb.2018.01249)
- Zúñiga, D., and others. 2017. Diatoms as a paleoproductivity proxy in the NW Iberian coastal upwelling system (NE Atlantic). *Biogeosciences* **14**: 1165–1179. doi: [10.5194/bg-14-1165-2017](https://doi.org/10.5194/bg-14-1165-2017)

#### Acknowledgments

We thank the other participants in the April 2018 workshop at Bigelow Laboratory for Ocean Sciences for their contributions to the ideas summarized in this article: David Emerson, Kristina Gjerde, Susan Lang, Jennifer Le, James J. McManus, Ramunas Stepanaukas, Jason Sylvan, Margaret K. Tivey, and Geoff Wheat. We also thank Verena Tunnicliffe and Cindy Lee Van Dover for providing advice on this topic, Kim Juniper for providing input on early versions of the manuscript, James Hein for providing the shape file information used in Fig. 1, and Brandy Toner and Cara Santelli for providing photomicrographs used in Fig. 2. This is C-DEBI publication number 481. Finally, we thank the anonymous reviewers of this article for their thoughtful recommendations, as well as the reviewers who provided comment on the earlier biorxiv version of this article. The Center for Dark Energy Biosphere Investigations (C-DEBI, funded by the US National Science Foundation award OIA-0939564) and the Deep Carbon Observatory at the Carnegie Institution of Washington (funded by the Alfred P. Sloan Foundation, CIW subaward 10693-03) are gratefully acknowledged for their funding support for the workshop and development and publication of this article.

#### Conflict of Interest

None declared.

*Submitted 02 April 2019*

*Revised 02 August 2019*

*Accepted 27 November 2019*

*Associate editor: Leila Hamdan*