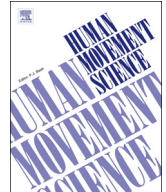




Contents lists available at ScienceDirect

Human Movement Science

journal homepage: www.elsevier.com/locate/humov

Adults with probable developmental coordination disorder selectively process early visual, but not tactile information during action preparation. An electrophysiological study

Xavier E. Job^{a,b}, Daniel Brady^{a,c}, Jan W. de Fockert^a, Caroline Di Bernardi Luft^d, Elisabeth L. Hill^a, José van Velzen^{a,*}

^a Department of Psychology, Goldsmiths, University of London, United Kingdom

^b Sorbonne Université, UPMC, CNRS, Institut des Systèmes Intelligents et du Robotique (ISIR), Paris, France

^c School of Psychology and Clinical Language Sciences, University of Reading, United Kingdom

^d School of Biological and Chemical Sciences, Queen Mary, University of London, United Kingdom

ARTICLE INFO

Keywords:

DCD
Somatosensory
Motor
Beta
Body

ABSTRACT

Developmental coordination disorder (DCD) is a neurodevelopmental condition affecting motor coordination in children and adults. Here, EEG signals elicited by visual and tactile stimuli were recorded while adult participants with and without probable DCD (pDCD) performed a motor task. The task cued reaching movements towards a location in visible peripersonal space as well as an area of unseen personal space. Event-related potentials elicited by visual and tactile stimuli revealed that visual processing was strongly affected by movement preparation in the pDCD group, even more than in controls. However, in contrast to the controls, tactile processing in unseen space was unaffected by movement preparation in the pDCD group. The selective use of sensory information from vision and proprioception is fundamental for the adaptive control of movements, and these findings suggest that this is impaired in DCD. Additionally, the pDCD group showed attenuated motor rhythms (beta: 13–30 Hz) over sensorimotor regions following cues to prepare movements towards unseen personal space. The results reveal that individuals with pDCD exhibit differences in the neural mechanisms of spatial selection and action preparation compared to controls, which may underpin the sustained difficulties they experience. These findings provide new insights into the neural mechanisms potentially disrupted in this highly prevalent disorder.

1. Introduction

Developmental coordination disorder (DCD) is a neurodevelopmental disorder affecting the acquisition and execution of co-ordinated motor skills appropriate for an individual's age and opportunity for skill learning (American Psychiatric Association, 2013). Individuals with DCD experience slowness and inaccuracy of performance of motor skills, which significantly interferes with activities of daily living, as well as academic performance (Henderson & Hall, 2008; Zwicker, Missiuna, Harris, & Boyd, 2012). Recent estimates suggest that between 2 and 5% of school-aged children have DCD (Kirby & Sugden, 2007; Lingam, Hunt, Golding, Jongmans, & Emond, 2009) which ranks it among one of the most common neurodevelopmental disorders in school-aged children.

* Corresponding author at: 1-15 Ben Pimlott Building, Goldsmiths, University of London, SE14 6NW, United Kingdom.
E-mail address: j.vanvelzen@gold.ac.uk (J. van Velzen).

<https://doi.org/10.1016/j.humov.2019.02.018>

Received 16 November 2018; Received in revised form 26 February 2019; Accepted 27 February 2019
0167-9457/ © 2019 Elsevier B.V. All rights reserved.

Importantly, the motor impairment associated with DCD and its consequences are now widely believed to persist into adolescence (Cantell, Smyth, & Ahonen, 2003; Losse et al., 1991) and into adulthood (Cousins & Smyth, 2003; Visser, 2003) with nearly three quarters of children with DCD continuing to experience difficulties as adults (Kirby & Sugden, 2007; Losse et al., 1991).

Despite the high prevalence and continued difficulty across the lifespan, a detailed understanding of the aetiology of DCD is limited at best. However, studying adults with persistent motor impairment necessarily excludes those whose impairment in childhood may have resulted from a more benign developmental delay, thus reducing the impact of the known heterogeneity within the disorder (Kirby, Sugden, & Purcell, 2014). Described as a neurodevelopmental disorder, it is believed to result from abnormal development of neural pathways serving perceptual and visuo-motor processing (for reviews see Wilson, Ruddock, Smits-Engelsman, Polatajko, & Blank, 2013; Wilson et al., 2017; Wilson & McKenzie, 1998). Wilson et al. (2017) identified a range of neuropsychological domains with which there is strong evidence for a deficit in DCD. Key deficits include the anticipatory control of movement, basic processes of motor learning and cognitive control.

Whilst knowledge of the, likely multiple, causes of DCD is presently limited, research is beginning to uncover the brain mechanisms underlying the core motor and cognitive deficits in DCD (for detailed reviews see Brown-Lum & Zwicker, 2015; Peters, Maathuis, & Hadders-Algra, 2013; Wilson et al., 2017). A small but growing number of neuroimaging studies have identified differential patterns of cortical activation in DCD compared to typical controls during cognitive (Debrabant, Gheysen, Caeyenberghs, Van Waelvelde, & Vingerhoets, 2013; Querne et al., 2008) and visuomotor tasks (Kashiwagi, Iwaki, Narumi, Tamai, & Suzuki, 2009; Licari et al., 2015; Zwicker, Missiuna, Harris, & Boyd, 2010, 2011). For example, Querne et al. (2008) showed that children with DCD exhibited differential patterns of connectivity within attentional and inhibitory networks compared to controls, and McLeod, Langevin, Goodyear, and Dewey (2014) found disrupted functional connectivity between primary motor cortex and areas serving sensorimotor processing, motor planning and executive functioning. Structural neuroimaging has also identified atypical white matter architecture in children with DCD, evidenced by decreased fractional anisotropy (FA) in the corpus callosum, which was associated with the children's poor motor and executive function (Langevin, Macmaster, Crawford, Lebel, & Dewey, 2014).

Importantly, a number of studies have reported deficits in covert orienting of visual-spatial attention (Wilson & Maruff, 1999; Wilson, Maruff, & McKenzie, 1997; Wilson, Maruff, Ives, & Currie, 2001; Zwicker et al., 2012), a mechanism that works to selectively amplify task relevant sensory information (e.g. Hillyard, Vogel, & Luck, 1998). These behavioural observations are supported by a small number of electrophysiological studies identifying a deficit in covert attentional orienting in children with DCD. For example, Tsai, Pan, Cherng, Hsu, and Chiu (2009) found that children with DCD show longer N1 event-related potential (ERP) latencies in response to target stimuli compared to typically developing children during tasks of covert orienting. This pattern of findings appears to hold not only for severe instances of DCD, but also in more moderate cases (Chen, Wilson, & Wu, 2012).

The control mechanisms governing spatial attention have been shown to be inseparable from the control mechanisms governing goal-directed action. For example evidence using functional MRI has identified overlapping activation of brain regions during tasks of covert orienting and movement preparation (Astafiev et al., 2003; Corbetta et al., 1998; Perry & Zeki, 2000). Therefore, further investigation of these mechanisms may shed light on the efficiency of this type of processing in adults with motor impairments. In healthy individuals, target detection is facilitated not only at locations of space that are covertly attended to, but at locations that are the target of upcoming eye movements (Deubel & Schneider, 1996; Irwin Robert & Gordon, 1998). Recent electrophysiological work has shown enhanced ERPs evoked by visual stimuli presented at the goal location of planned manual movements (Eimer, Forster, Velzen, & Prabhu, 2005; Eimer, Van Velzen, Gherri, & Press, 2006), as well as during reaching movements (Gherri, Van Velzen, & Eimer, 2009; Job, de Fockert, & van Velzen, 2016) and sequences of reaching movements (Baldauf & Deubel, 2009; Baldauf, Cui, & Andersen, 2008). Together these effects demonstrate an adaptive prioritisation of sensory processing at action-relevant spatial locations (for a review see Baldauf & Deubel, 2010). Furthermore, recent electrophysiological evidence has shown enhanced visual processing at locations along the reach trajectory taken around obstacles (Baldauf, 2018). Given these known links between mechanisms of spatial attention and motor preparation, as well as the growing evidence for deficits of spatial attention in DCD, a detailed investigation of these processes in DCD is required.

The ERP method is well suited to investigating early sensory perception due to its fine temporal resolution in the millisecond range. ERPs provide a useful index of attentional processing, given that stimuli falling within an attended area of space receive increased processing resources and therefore typically elicit larger ERP component amplitudes, regardless of the stimuli's task relevance (Heinze et al., 1994). Enhanced ERP components can therefore be obtained in response to task-irrelevant visual 'probe' stimuli presented in an attended area relative to an unattended area of space (Hillyard, Vogel, & Luck, 1998; Hillyard & Anillo-Vento, 1998).

Early studies investigating sensory perception at movement relevant locations have focused entirely on movements towards peripersonal space, the visible areas of space within arms' reach, which is functionally relevant for object exploration and manipulation. However, many movements have goal locations in personal space, on the body surface, and many of these are located in unseen space (e.g. movements towards the face when eating, toward the upper chest, or back). Such movements rely more on tactile and proprioceptive information rather than vision and they differ functionally, in that they likely serve to touch the body (e.g. touch the mouth when eating or to scratch an itch). Previous findings have shown that early processing of tactile information on the hands is influenced by movement preparation: tactile ERP components (e.g. N140) are enhanced during the preparation of eye-movements (Gherri & Eimer, 2008), manual movements (Eimer, Forster, Velzen, & Prabhu, 2005) as well as reaching movements (Forster & Eimer, 2007) toward the stimulated area. Recent work from our lab found that tactile processing on an unseen area of the body surface was similarly enhanced when a reaching movement to this area was prepared (Job et al., 2016). These findings, together with the marked similarities in preparatory activity across attention and movement preparation, suggest that similar mechanisms modulate visual and tactile sensory perception during planned movements.

To summarise, despite growing evidence for shared mechanisms of attention and movement preparation and the demonstrated attentional difficulties in DCD, little is known about how individuals with DCD prioritise sensory processing at spatial locations relevant for upcoming action. Here, movement preparation and its consequences for sensory processing are investigated in adults with probable DCD (pDCD) and compared to that of matched controls using a delayed movement task (Job et al., 2016). In this task, an auditory cue instructs participants to prepare a movement towards a goal location either in peripersonal space in front of them or to an unseen area of space on the body surface, however the movement is to be withheld until a ‘GO’ signal. During the delay, visual or tactile task-irrelevant probe stimuli are delivered at the peripersonal or personal movement goal locations, respectively. The analyses will focus on early neural responses to these probes, as indexed by visual and tactile ERPs, which should be influenced by movement preparation such that preparing to move to a location selectively biases early sensory processing at that location. Difficulties with adaptively prioritising sensory processing in individuals with pDCD would be reflected by reduced modulations of early sensory processing during movement preparation compared to controls. Further, given that individuals with DCD display particular difficulties with movements based on proprioception (Summers, Larkin, & Dewey, 2008), it is expected that sensory processing at the goal of upcoming movements towards an unseen location on the body will be particularly affected.

Additionally, cued motor preparation is also typically accompanied by a prominent decrease in the power of beta oscillations (13–30 Hz) relative to the pre-cue baseline over central electrode sites (Cheyne, 2013; Kilavik, Zaepffel, Brovelli, MacKay, & Riehle, 2013; Pfurtscheller, Stancák, & Neuper, 1996). These power decreases are often referred to as an event-related desynchronisation (ERD) (Pfurtscheller & Lopes da Silva, 1999) with the most common source being the contralateral pre-Rolandic ‘sensorimotor’ region (Pfurtscheller & Berghold, 1989). While there are controversies regarding the exact functional role of ERD in cued movement tasks (Kilavik et al., 2013), there is a general consensus that beta ERD provides a reliable indicator of the onset of movement preparation, execution and motor imagery (Kuhn et al., 2006; Pfurtscheller & Lopes da Silva, 1999; Pfurtscheller & Neuper, 1997) and may reflect an active process promoting existing motor or cognitive states (Engel & Fries, 2010). Whether or not individuals with pDCD exhibit the same pattern of beta ERD during delayed movement tasks is unknown, as no studies to date have investigated oscillatory dynamics during cued movements in DCD. An exploratory approach to investigating beta ERD following movement cues in pDCD is therefore taken, with the aim of identifying any stable differences in beta ERD between the groups.

2. Materials and methods

2.1. Participants

A total of 24 adults (See Table 1, upper panel, for mean ages) took part in return for travel expenses and £20. The pDCD group consisted of 12 adults (10 females) who reported a diagnosis of developmental coordination disorder (DCD) given either in adulthood (10) or in childhood (2). As well as reporting a diagnosis of DCD all participants in the pDCD group had self-reported motor difficulty in the form of scores within probable range on the Adult DCD Checklist (ADC, Kirby, Edwards, Sugden, & Rosenblum, 2010). The ADC is a 40-item questionnaire designed to screen for motor-related deficits in adulthood, with higher scores indicating greater levels of impairment. The control group consisted of 12 adults (10 females) who reported no diagnosis of DCD and scored outside of the range considered at risk of DCD on the ADC. All participants were right handed (see Table 1 upper panel) and reported normal or corrected to normal vision. All participants provided written informed consent and were debriefed at the end of the experiment as appropriate. The Local Ethics Committee at Goldsmiths, University of London, approved all experimental protocols and the

Table 1

Means (M) and standard deviations (SD) for pDCD and control groups, as well as F-ratios and p-values for the effect of group.

	pDCD (n = 12)		Control (n = 12)		F-Ratio (1, 22)	
	M	SD	M	SD		
Age (years)	26.33	(4.20)	27.92	(2.96)	F = 1.13	p = .298
Edinburgh Handedness Inventory	89.32	(12.55)	88.67	(13.74)	F = 0.012	p = .913
Adult DCD Checklist	89.67	(12.78)	23.00	(14.12)	F = 133.72	p < .001
<i>Movement Assessment Battery (MABC-2)</i>						
Manual Dexterity Total	31.83	(7.61)	39.17	(9.06)	F = 4.61	p = .043
Ball Skills Total	20.83	(10.87)	24.17	(7.83)	F = 0.74	p = .398
Balance Total	29.42	(10.88)	39.75	(6.20)	F = 8.18	p = .009
Grand Total	82.08	(21.22)	103.08	(15.70)	F = 7.60	p = .012
<i>Wechsler Adult Intelligence Scale (WAIS-III)</i>						
Picture Completion	11.58	(1.78)	12.08	(2.43)	F = 0.33	p = .298
Vocabulary	13.42	(3.45)	13.75	(1.54)	F = 0.09	p = .571
Similarities	12.00	(3.22)	14.00	(1.54)	F = 3.77	p = .065
Block Design	11.92	(2.94)	13.17	(1.95)	F = 1.51	p = .232
Matrix Reasoning	13.83	(2.08)	14.33	(1.77)	F = 0.40	p = .533
<i>Delayed movement task (ms)</i>						
Personal movement RT	645	(156)	596	(123)	F = 0.717	p = .406
Peripersonal movement RT	655	(148)	631	(142)	F = 0.167	p = .686

experiment adhered to the ethical guidelines presented in the 1964 declaration of Helsinki.

2.2. Motor assessments

All participants completed the Adult Developmental Coordination Disorder Checklist (Kirby et al., 2010), a screening tool for identifying DCD in adulthood. In order to ensure individuals in the pDCD group experienced continued coordination difficulty in comparison to the control group, the highest age band (16 years, 11 months) tasks of the Movement Assessment Battery for Children (MABC-2, Henderson, Sugden, & Barnett, 2007) were administered. Although it is not appropriate to formulate a diagnosis using these tasks, as standardised normative scores are available only up to the age of 16 years and 11 months, comparisons to the control group validate the placement of individuals into the respective pDCD and control groups (see Table 1 middle panel for a summary of the MABC-2 results). The use of scores standardised to the upper age band of the MABC has been used to validate group inclusion in previous studies investigating adult DCD sample (Wilmot & Byrne, 2014; Wilmot, Byrne, & Barnett, 2013). The MABC-2 was administered as instructed in the manual and consists of tasks assessing manual dexterity, ball skills as well as static and dynamic balance.

2.3. Intelligence assessments

In accordance with the DSM-5 diagnostic criterion D - The motor skills deficits are not better explained by intellectual disability (intellectual developmental disorder) - an assessment of intelligence using subtests from the Wechsler Adult Intelligence Scale third edition (WAIS-III, Wechsler, 1997) was used. Although no IQ cut-off or discrepancy is specified by the diagnostic manual, participants were only included in the study if their scores were not below two standard deviations from mean on a number of subtests of the WAIS-III, as recommended by Sugden (2006). Verbal measures included vocabulary and similarities and performance measures included picture completion, block design and matrix reasoning. All tests were administered according to the manual instructions.

2.4. Stimuli and task

A delayed movement task (Job et al., 2016) was implemented using E-Prime software (Schneider et al., 2002). See Fig. 1 for a schematic illustration of the task trial procedure. The auditory cue and the response required were counterbalanced across participants; half of participants in each group prepared a movement towards the peripersonal goal after the presentation of a high tone (1 kHz) and a movement towards a personal goal following a low tone (0.4 kHz) and the reverse was true for the remaining participants. The visual probe consisted of an LED (2 cm in diameter, subtending 1.91° in visual angle at 60 cm from participant) presented for 200 ms. The tactile probe was delivered by a solenoid, driving a blunt ended metal rod that contacted the skin when a current was passed through them. The tactile device was attached with an adhesive sticker to the upper sternum. White noise (62 dB SPL) was played throughout the experiment in order to mask any sounds made by the tactile device. Responses were collected using a custom-made response panel consisting of two centrally located infrared response devices embedded at 30 cm and 60 cm from the panel's edge. The infrared device situated closest to the body (30 cm) acted as the starting point for movements and as the fixation point. The device registered the moment the hand was lifted from the central starting point of the movement. Responses made towards peripersonal space were recorded using the further infrared response device (60 cm from the participant), which registered a response when the hand landed on the device. A touch sensitive device attached to the chest recorded the time at which the hand arrived at the personal goal.

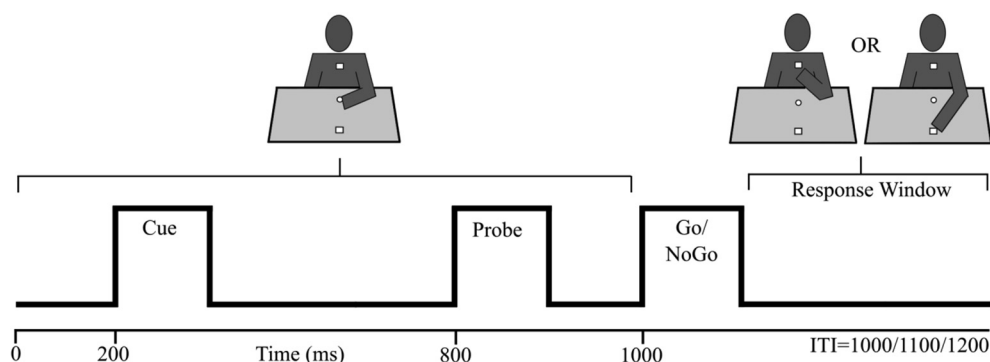


Fig. 1. Schematic illustration of the delayed movement task trial procedure. Auditory cues are first presented that signal the preparation of the reaching movement either to a goal location in visible peripersonal space in front of participants, or to a goal location in personal space on the body surface. Before the execution of the movement is signalled by an auditory GO/NoGO stimulus, a task irrelevant visual or tactile probe is delivered to the peripersonal or personal goal location, respectively. Participants are told to ignore the probes and to execute the movements as fast and accurately as possible. The inter-trial-interval (ITI) is randomly varied to be 1000, 1100 or 1200 ms.

2.5. Procedure

Participants were seated in a sound-attenuated, dimly lit and electrically shielded chamber. They first completed a practice block of 40 randomised trials, followed by a block of 480 trials with a pause every 60 trials after which participants verbally informed the experimenter to continue with the next 60 trials. With each block of 60 trials participants were instructed to change the arm with which they completed the movement, with the order counterbalanced between participants. There were therefore 120 trials per condition (peripersonal/visual probe, peripersonal/tactile probe, personal/visual probe, and personal/tactile probe). Within each condition, there were 96 Go trials and 24 No-go trials. The total duration of the experiment was approximately 45 min.

2.6. EEG recording and processing

EEG was recorded from 64 Ag–AgCl electrodes at a digitisation rate of 2048 Hz and down sampled offline to 512 Hz. Electrodes were referenced to the average of electrodes placed on the left and right earlobes. Activity from horizontal eye movements was recorded from pairs of electrodes placed on the outer canthi of the eyes. Vertical eye movement activity was recorded from electrodes placed above and below the left eye. Offline pre-processing of the EEG data was conducted using EEGLab toolbox (Delorme & Makeig, 2004). Further offline analysis was conducted using a combination of Fieldtrip toolbox (Oostenveld, Fries, Maris, & Schoffelen, 2011) and custom MATLAB scripts.

Continuous EEG data were high-pass filtered at 1 Hz and divided into 600 ms epochs locked to the onset of the visual or tactile probe including a 200 ms pre-stimulus baseline. Probes presented before a Go and No-go signal were included in the analyses. Cue-locked data were divided into 1600 ms epochs locked to the onset of the movement cues including a 400 ms pre-stimulus baseline. Epochs including voltages exceeding + and/or – 100 μ V were automatically rejected prior to analysis. Eye-blink artefacts were corrected for using Independent Component Analysis (ICA).

For probe-locked epochs, the peak amplitudes of ERP components within pre-defined time windows were extracted for analysis, in line with previous investigations (Eimer, 1993; Hillyard, Vogel, & Luck, 1998; Hillyard & Anllo-Vento, 1998; Mangun, Hillyard, & Luck, 1993). For the visual probe the maximal positive amplitude between 50 and 150 ms post stimulus onset was extracted and analysed as the P1 peak amplitude. Maximal negative amplitudes between 100 and 200 ms post-stimulus were extracted and analysed as the N1 peak amplitude. The tactile probe-evoked P60 peak amplitude was detected as the largest positive amplitude between 20 and 120 ms post stimulus onset and the tactile N140 component peak amplitude was detected between 100 and 200 ms post stimulus onset.

For cue-locked epochs, the time-varying spectral content of the signal was estimated using Morlet Wavelet based time-frequency representation (TFR). The signal of individual epochs was convolved in the single-trial using Complex Morlet wavelets and then averaged for each participant. The number of cycles per wavelet was linearly scaled with the spectral frequency from 3 cycles at 5 Hz to 10 cycles at 50 Hz. Changes in the spectral power following the cue were calculated by dividing it by its baseline value at each frequency, averaged from – 400 ms to the onset of the cue. The power at frequencies within the beta range (13–30 Hz) was averaged. Epochs were subsequently averaged such that right hemisphere electrodes for epochs where movements were executed with the left hand were averaged with left hemisphere electrodes in right hand epochs (contralateral electrodes). Similarly, left hemisphere electrodes in left hand epochs were averaged with right hemisphere electrodes in right hand epochs (ipsilateral electrodes). This averaging procedure was used in order to merge cue-locked data from left and right hand blocks while maintaining information about hemispheric lateralisation.

2.7. Statistical analysis

For ERP analysis the peak amplitude values were extracted and analysed. Central electrode sites over left and right hemispheres (C1/2, C3/4, C5/6, CP3/4, CP5/6) as well as posterior-occipital sites over left and right hemispheres (O1/2, PO3/4, PO7/8) were pooled for analyses. Electrode sites were chosen based on the latency and scalp distribution of grand average components averaged across conditions. A mixed ANOVA was used for visual and tactile evoked responses separately, with one between-subjects factor of group (pDCD vs. Control) and three within-subjects factors of movement preparation (personal vs. peripersonal), electrode hemisphere (left vs. right) and electrode region (central vs. posterior). Corrections for multiple comparisons were made using Bonferroni adjustment.

For cue-locked epochs, the lack of previous literature regarding beta oscillations in individuals with DCD meant that an a priori hypothesis regarding when or where the spectral content of the EEG signal might differ between the groups was not made. An exploratory analysis approach, non-parametric cluster permutation (Maris & Oostenveld, 2007), of the cue-locked data was therefore adopted. This approach to the analysis of multidimensional neuroimaging data extracts spatiotemporal regions showing significant differences between conditions or groups without any a priori on spatial regions or time windows. It therefore identifies effects that are robust within a cluster, rather than highly significant on one dimension (i.e. a single electrode and/or time point). The method is as robust against Type I error as Bonferroni's correction, as Type I error is intrinsically controlled for by evaluating only the maximum cluster-level statistics under the null hypothesis. The method has been successfully applied in a number of EEG studies (Lindsen, Jones, Shimojo, & Bhattacharya, 2010; Luft & Bhattacharya, 2015; Park, Correia, Ducorps, & Tallon-Baudry, 2014; Sandkühler, Bhattacharya, Schoffelen, Maris, & Oostenveld, 2008).

The following steps were taken to identify significant clusters: 1) Independent samples *t*-statistics comparing pDCD and control data were gathered for each of the samples in the multidimensional data structure; 2) *t*-statistics above a *p*-value threshold ($p < .05$)

were then gathered; 3) Neighbouring data points exceeding the threshold were found; 4) The t -statistics were summed to calculate the cluster level statistic; 5) The maximum cluster statistic under its permutation distribution (shuffled data), derived from the test statistics obtained from the independent samples t -tests based on 1000 random permutations, was evaluated. The cluster-level significance threshold was set at the two-tailed level of 0.025. Electrodes with distances of less than 5 cm were considered neighbouring, yielding an average of 6.6 neighbours per electrode. Following identification of significant clusters, an ANOVA with a between-subjects factor of group (pDCD vs. Control) and a within-subjects factor of movement preparation (personal vs. peripersonal) was used on the beta power values relative to baseline, averaged across significant cluster electrodes/time points.

3. Results

3.1. Movement assessment results

All individuals in the pDCD group scored above the higher cut off of 65 on the Adult DCD Checklist placing them within the ‘probable DCD’ category. All of the individuals in the control group scored below the lower cut off of 56 for ‘at risk’ of DCD. Results of the MABC-2 can be seen in the middle panel of Table 1. Group performance on each measure total as well as the grand total was compared using one-way ANOVAs with group (pDCD vs. Control) as the between-subjects factor and measure total as the dependant variable. As can be seen in Table 1, the controls outperformed the pDCD group for tasks of manual dexterity as well as balance. The groups did not differ on their performance on the ball skill tasks. Overall, however, the control group significantly outperformed the pDCD group on the grand total for the MABC-2. This corroborates previous demonstrations of not only the continued motor difficulty experienced by adults with DCD compared to controls (Cousins & Smyth, 2003), but the utility of the MABC-2 in validating group inclusion criteria when comparing adult DCD and control groups (Wilmot & Byrne, 2014; Wilmot et al., 2013).

3.2. Intelligence assessment results

Table 1 shows performance on each subtest of the WAIS-III. In line with DSM5 Criterion D, all participants performed within the normal range (i.e. not below two standard deviations from the mean, as recommended by Sugden (2006) on each subtest). Furthermore, the groups did not differ on any of the intelligence measures administered; therefore, the groups are sufficiently matched on intelligence.

3.3. Delayed movement task

Table 1 (bottom panel) shows the mean reaction times and results of one-way ANOVAs comparing the groups for movements towards personal and peripersonal space. Although the pDCD group’s reaction times were overall slower than controls, this difference did not reach statistical significance either for movements towards personal or peripersonal movement targets.

3.4. Visual probe-evoked potentials

Figs. 2 and 3 show the grand averaged ERPs elicited by the visual probe during movement preparation both towards personal and peripersonal space. As shown, the visual ERP components are most pronounced over occipital electrode sites.

Statistical analysis confirmed the distribution of the P1 was largest at posterior electrode sites with a main effect of electrode region ($F(1,22) = 14.58$, $p = .001$, $\eta_p^2 = 0.399$). A significant interaction between movement preparation, (personal vs. peripersonal), group (pDCD vs. controls) and electrode region (central vs. posterior) was present, $F(1,22) = 4.68$, $p = .042$, $\eta_p^2 = 0.175$. An ANOVA with a between-subjects factor of group (pDCD vs. controls) and within-subjects factors of movement preparation (personal vs. peripersonal) was therefore used on posterior sites only. This revealed a significant interaction between movement preparation and group ($F(1,22) = 10.10$, $p = .004$, $\eta_p^2 = 0.315$) and indicates that the pDCD group modulated the visual probe evoked P1 component as a function of movement preparation to a greater extent than the control group. Post-hoc t -tests confirmed that P1 amplitudes were significantly larger during movement preparation towards the probed location in peripersonal space ($M = 4.37$, $SD = 2.23$) relative to the opposite location in personal space ($M = 3.12$, $SD = 2.18$) in the pDCD group, $t(11) = -2.56$, $p = .026$. This difference was not significant in the control group, $t(11) = 1.22$, $p = .248$ (peripersonal space $M = 2.61$, $SD = 1.59$, personal space $M = 3.13$, $SD = 1.59$). See Fig. 6 for bar graphs summarising the mean peak amplitudes of early ERP components.

For the visual probe-evoked N1 component, no main effect of group (pDCD vs. control) or interactions involving group were present (all F -values < 2.5 , all p -values > 0.1). An interaction between movement preparation (personal vs. peripersonal) and the electrode region (occipital vs. central) was present, $F(1,22) = 5.88$, $p = .024$, $\eta_p^2 = 0.211$. Post-hoc t -tests revealed that, for all participants, at occipital sites, the N1 was enhanced during movement preparation towards the probed location in peripersonal space ($M = -3.96$, $SD = 3.03$), compared to during movements towards the opposite location in personal space ($M = -3.24$, $SD = 3.39$), $t(23) = 2.34$, $p = .028$. This difference was not significant at central electrode sites, $t(23) = 0.68$, $p = .503$.

3.5. Tactile probe-evoked potentials

Figs. 4 and 5 shows the grand averaged ERPs elicited from the tactile probe during movement preparation both towards personal

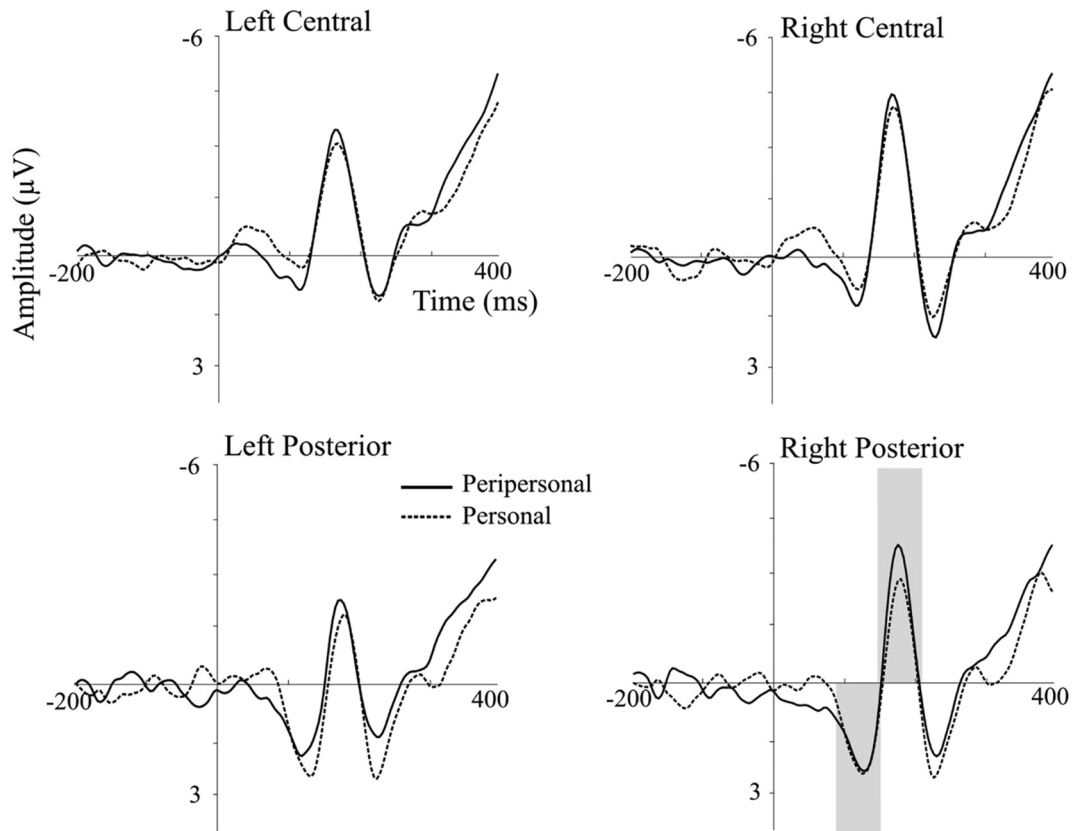


Fig. 2. Control group grand averaged ERPs locked to the visual probe stimuli (onset time point 0 ms) as a function of movement preparation (Peripersonal vs. Personal) at electrodes pooled into four regions: left/right central sites (C1/2, C3/4, C5/6, CP3/4, CP5/6) and left/right posterior sites (O1/2, PO3/4, PO7/8). Highlighted are the visual P1 and N1 components, which were most pronounced at right posterior electrode sites.

and peripersonal space. As shown, the tactile ERP components are most pronounced over central electrode sites.

Statistical analysis confirmed that the distribution of the P60 was largest at central electrode sites ($F(1,22) = 6.11$, $p = .022$, $\eta_p^2 = 0.217$). A main effect of movement preparation ($F(1,22) = 5.03$, $p = .035$, $\eta_p^2 = 0.186$) was also present. An interaction between group (pDCD vs. control) and movement preparation (personal vs. peripersonal) was marginally significant ($F(1,22) = 6.11$, $p = .059$, $\eta_p^2 = 0.159$). This indicates that the control group modulated the tactile probe-evoked P60 component as a function of movement preparation to a greater extent than the pDCD group. Post-hoc t -tests confirmed that for the control group the P60 component was significantly larger during movement preparation towards the probed location in personal space ($M = 3.68$, $SD = 2.54$) relative to the opposite location in peripersonal space ($M = 2.89$, $SD = 2.56$), $t(11) = 3.15$, $p = .009$. This difference was not significant for the pDCD group, $t(11) = 0.620$, $p = .548$ (personal space $M = 3.63$, $SD = 1.59$, peripersonal space $M = 3.58$, $SD = 1.93$).

The tactile probe-evoked N140 component was largest at central electrode sites in the right hemisphere, as evidenced by main effects of both electrode region and hemisphere, respectively ($F(1,22) = 22.83$, $p < .001$, $\eta_p^2 = 0.509$, $F(1,22) = 7.55$, $p = .012$, $\eta_p^2 = 0.256$) as well as an interaction between region and hemisphere $F(1,22) = 14.86$, $p = .001$, $\eta_p^2 = 0.403$. No significant main effects or interactions with the factors of group, or movement preparation were present for the N140 (all p -values > 0.09).

3.6. Cue-locked beta oscillations

For the cue-locked activity, time-frequency representations of the data were subjected to non-parametric cluster permutation (Maris & Oostenveld, 2007) in order to explore differences in preparatory activity during delayed movements between the groups.

The control group showed a greater event-related decrease in beta power following cues to prepare a movement towards personal space on the body surface compared to controls (see Fig. 7a), while no differences were found for movements away from the body. Fig. 7b shows the difference (controls vs. pDCD) in beta (13–30) power following cues to prepare a movement towards the goal location in personal space. The difference resulted in a negative cluster, which started around 0.5 s following the movement cue at sensorimotor electrodes (significant cluster electrodes are highlighted, $p < .025$). The cluster remained significant until the onset of the GO signal (1 s). The cluster began in the hemisphere contralateral to the movement hand but became quickly bilateral and finally progressed anteriorly across time. An ANOVA with a between-subjects factor of group (pDCD vs. Controls) and a within-subjects

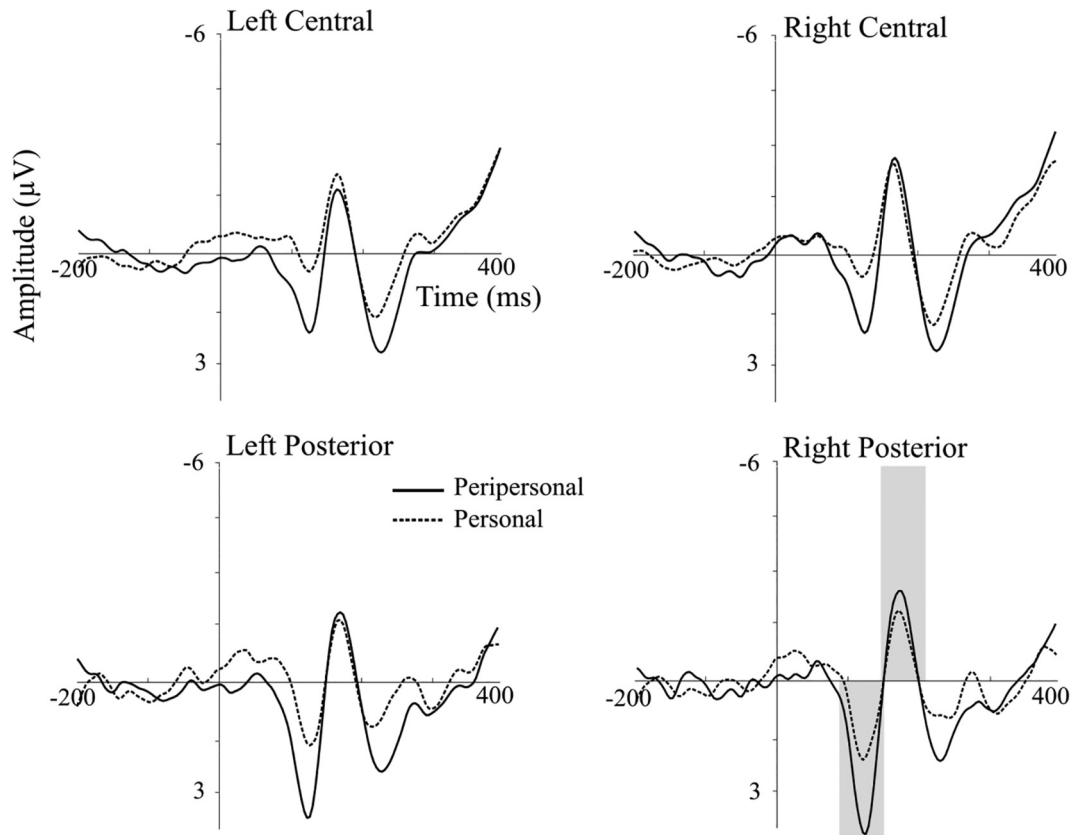


Fig. 3. pDCD group grand averaged ERPs locked to the visual probe stimuli (onset time point 0 ms) as a function of movement preparation (Peripersonal vs. Personal) at electrodes pooled into four regions: left/right central sites (C1/2, C3/4, C5/6, CP3/4, CP5/6) and left/right posterior sites (O1/2, PO3/4, PO7/8). Highlighted are the visual P1 and N1 components, which were most pronounced at right posterior electrode sites.

factor of movement preparation (personal vs. peripersonal space) was run on beta power values averaged across significant cluster electrodes from 0.5 to 1 s post-cue. A main effect of group was found (see Fig. 7c) with control participants exhibiting a significantly larger reduction from baseline beta power, which was standardised to 1.0 ($M = 0.90$, $SD = 0.017$) compared to the pDCD group ($M = 0.98$, $SD = 0.017$), $F(1,22) = 9.59$, $p = .005$, $\eta_p^2 = 0.303$. A significant group by movement preparation interaction was also found, $F(1,22) = 6.99$, $p = .015$, $\eta_p^2 = 0.241$. Post-hoc t -tests revealed that this interaction was driven by movements towards personal space in which the control group showed a larger reduction from baseline beta power ($M = 0.89$, $SD = 0.07$) compared to the pDCD group ($M = 0.99$, $SD = 0.06$), $t(22) = -3.91$, $p = .001$. This difference was not significant for movements towards peripersonal space, $t(22) = -1.73$, $p = .098$ (controls: $M = 0.91$, $SD = 0.07$, pDCD: $M = 0.95$, $SD = 0.06$).

4. Discussion

This study investigated the neural underpinnings of motor preparation in adults with and without probable developmental coordination disorder (pDCD) by recording EEG signals during a delayed movement task. When planning the movements, healthy controls selectively processed visual and tactile information at the movement goal, as previously reported. However, adults with pDCD did not selectively process tactile information at the movement goal to the same extent as controls. Instead individuals with pDCD selectively processed visual information to a greater extent than matched controls. While the overall group differences were marginal, they may provide important information about how sensory information is processed during movement preparation in adults with motor impairment. Additionally, the groups showed marked differences in the power of sensorimotor beta rhythms (13–30 Hz) during movement preparation.

Spatial selection during motor preparation was measured with visual and tactile ERP responses elicited by task-irrelevant probe stimuli delivered following a cue to prepare a reaching movement either towards or away from the body. Individuals with pDCD showed a greater enhancement of the P1 component elicited by the visual probes presented at the goal of the planned movement. However, when preparing a reaching movement towards an area of unseen personal space on the body surface the reverse effects, although marginal ($p = .059$), were observed for tactile ERPs. Individuals with pDCD showed little or no enhancement of the tactile probe-evoked P60 component compared to controls, who showed larger P60 amplitudes when preparing to move to the probed location.

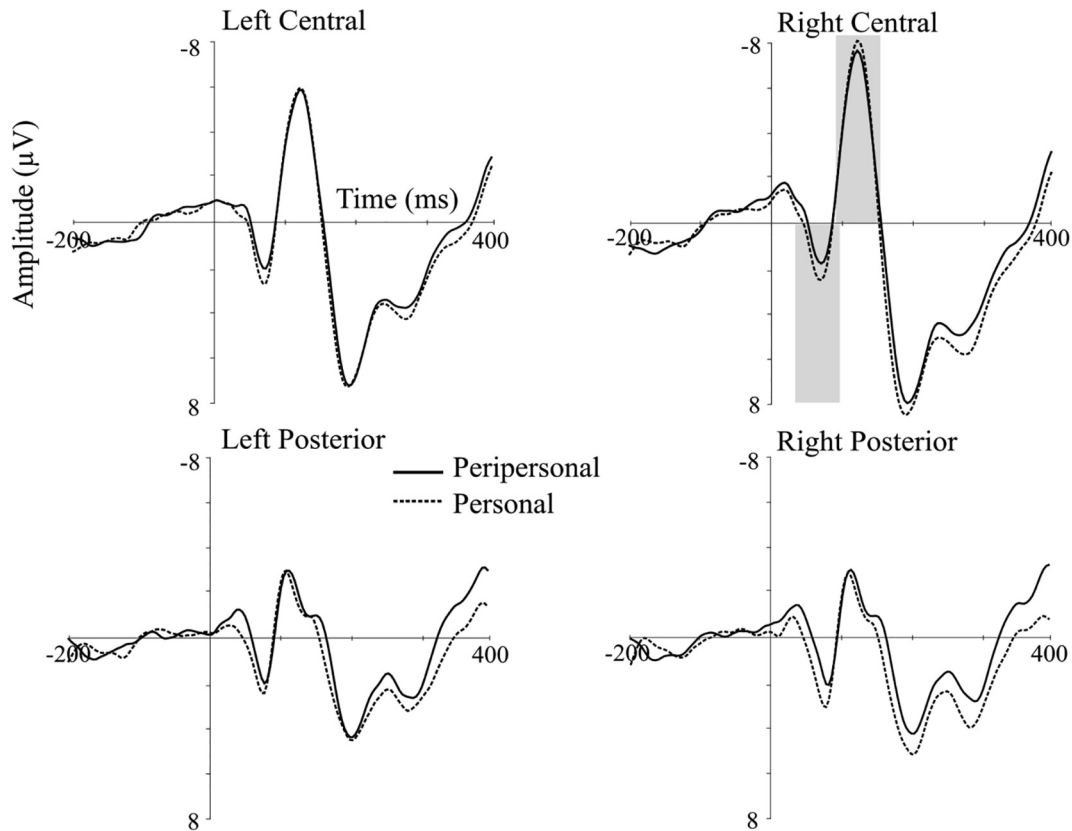


Fig. 4. Control group grand averaged ERPs locked to the tactile probe stimuli (onset time point 0ms) as a function of movement preparation (Peripersonal vs. Personal) at electrodes pooled into four regions: left/right central sites (C1/2, C3/4, C5/6, CP3/4, CP5/6) and left/right posterior sites (O1/2, PO3/4, PO7/8). Highlighted are the somatosensory P60 and N140 components, which were most pronounced at right hemisphere central electrode sites.

Previous studies have shown that movement preparation by healthy subjects modulates visual and tactile information in a similar manner, such that visual and tactile perception at movement goals is enhanced prior to executing the movement (Forster & Eimer, 2007; Gherri & Eimer, 2008). Our more recent work (Job et al., 2016) has also shown that the mechanisms involved in preparing movements towards unseen body locations are similar to those underlying movements into visible peripersonal space. The finding that the pDCD group is selectively impaired in modulating (somato)sensory processing during movement preparation towards the body, could suggest a problem with the integrity of the available sensory input, which would critically affect these mechanisms. The question remains as to the exact nature of such compromised sensory input in DCD. Whether it is the quality of afferent tactile/proprioceptive information that is impaired in DCD, the ability of parietal regions to represent such information appropriately, or the effective use of this information during motor preparation is so far unknown. A combination of these factors across development may be likely; indeed, it is conceivable that impaired afferent proprioceptive information in early childhood could result in later under-reliance of this sensory information for movement planning downstream in development.

The pattern of ERP results observed here is consistent with a suggested relative over-reliance on visual as opposed to tactile information in DCD, as this group modulated visual information in peripersonal space to a greater extent as well as earlier than controls, but showed little or no modulation of tactile processing in an area of unseen space. There is some support for an over-reliance on visual information in DCD from behavioural studies of postural control (Bair, Barela, Whittall, Jeka, & Clark, 2011; Hill, 1998), walking (Deconinck et al., 2008) as well as reaching (Zoia, Castiello, Blason, & Scabar, 2005). Zwicker et al. (2010) also found greater activation during a trail tracing task in regions of the frontal, parietal and temporal lobes of children with DCD, areas associated with visual-spatial processing, whereas controls activated primarily the precuneus to support their motor performance. This may suggest that the DCD group relied more on visual and spatial processing to complete the task compared to the controls. Other fMRI findings (Debrabant et al., 2013; Querne et al., 2008) have identified relative hypoactivation of attentional brain network areas such as the dorsolateral prefrontal cortex (DLPFC), suggesting a greater requirement of processing resources for motor performance in DCD. The apparent over-reliance on visual information in DCD could be the result of either compensatory mechanisms for poor sensory feedback from proprioceptive systems, poor use of such afferent information for motor preparation, from atypical development of internal models for movement, or a combination of these factors. The challenge for future research investigating the brain mechanisms involved in DCD should seek to elucidate this further.

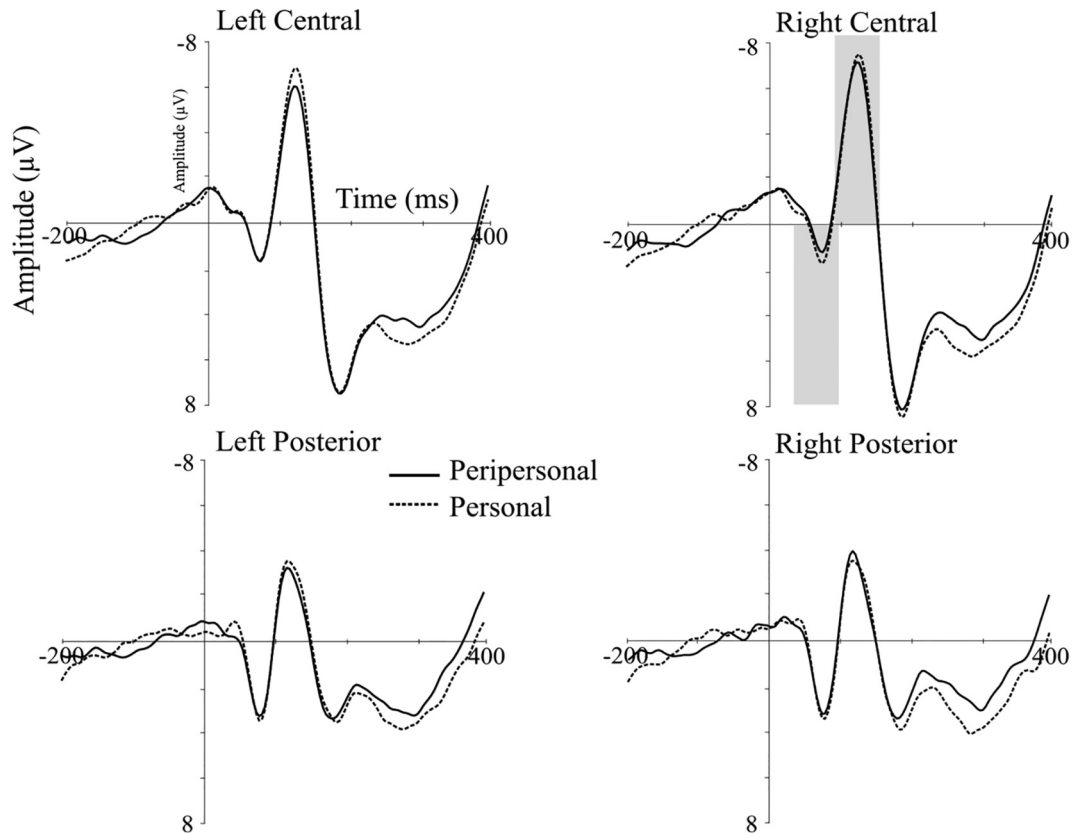


Fig. 5. pDCD group grand averaged ERPs locked to the tactile probe stimuli (onset time point 0ms) as a function of movement preparation (Peripersonal vs. Personal) at electrodes pooled into four regions: left/right central sites (C1/2, C3/4, C5/6, CP3/4, CP5/6) and left/right posterior sites (O1/2, PO3/4, PO7/8). Highlighted are the somatosensory P60 and N140 components, which were most pronounced at right hemisphere central electrode sites.

Alternatively, the finding that the pDCD group is selectively impaired at modulating somatosensory information during movements towards the body could suggest that the mechanisms with which movement preparation modulates visual and somatosensory information may in fact differ, contrary to previous conclusions (Forster & Eimer, 2007; Gherri & Eimer, 2008; Job et al., 2016). Rather than one uniform mechanism controlling modulations of visual and somatosensory processing during movement preparation, distinct mechanisms may be at work for movements towards different functional spaces (i.e. personal/peripersonal) that depend on differing sensory information that is typically available for such movements.

Notwithstanding the wider implications of the findings, the relatively inefficient selection mechanisms for tactile perception on the body surface observed here may help to explain some of the more precise output problems reported in descriptive studies of DCD, for example difficulty with activities such as eating, grooming and dressing (Summers et al., 2008). Such activities often involve movements towards personal space on the body surface, many of which are located in regions not typically accessible to vision (e.g. the face and upper torso). It further suggests that the sensory modulations that are observed at (unseen) locations relevant for motor behaviour reflect the influence of a mechanism that is a necessary requirement for adaptive and smooth motor behaviour. It should be noted that while sensory perception during movement preparation differed between the groups, as indexed by early ERP components, no differences were observed in the behavioural responses of the delayed movement task. It could be that the relatively crude measure of motor behaviour in this task (reaction times to initiate a reaching movement) was not sensitive enough to detect more fine-grained differences in the kinematics of the movements between the groups. Nevertheless, our findings show that the task was performed differently by the two groups, with the pDCD group demonstrating an over-reliance on visual information.

In addition to the probe-evoked potential findings, differences between the groups in the oscillatory dynamics induced by movement cues were also identified, for the first time in the known literature. Following cues to prepare a movement towards the unseen goal in personal space, differences between the groups emerged in the beta band (13–30 Hz). The pDCD group showed significantly less event-related desynchronisation (ERD) of beta oscillations from approximately 500 ms after the cue onset. This difference in beta ERD was initially distributed over sensorimotor electrodes contralateral to the movement hand and became bilateral and finally progressed anteriorly over time. There is a general consensus that sensorimotor beta ERD in delayed movement tasks reflects an active process promoting existing motor or cognitive states (Engel & Fries, 2010) and provides an index of motor preparation. This therefore suggests that the DCD group's attenuation of beta ERD, relative to controls, reflects less efficient

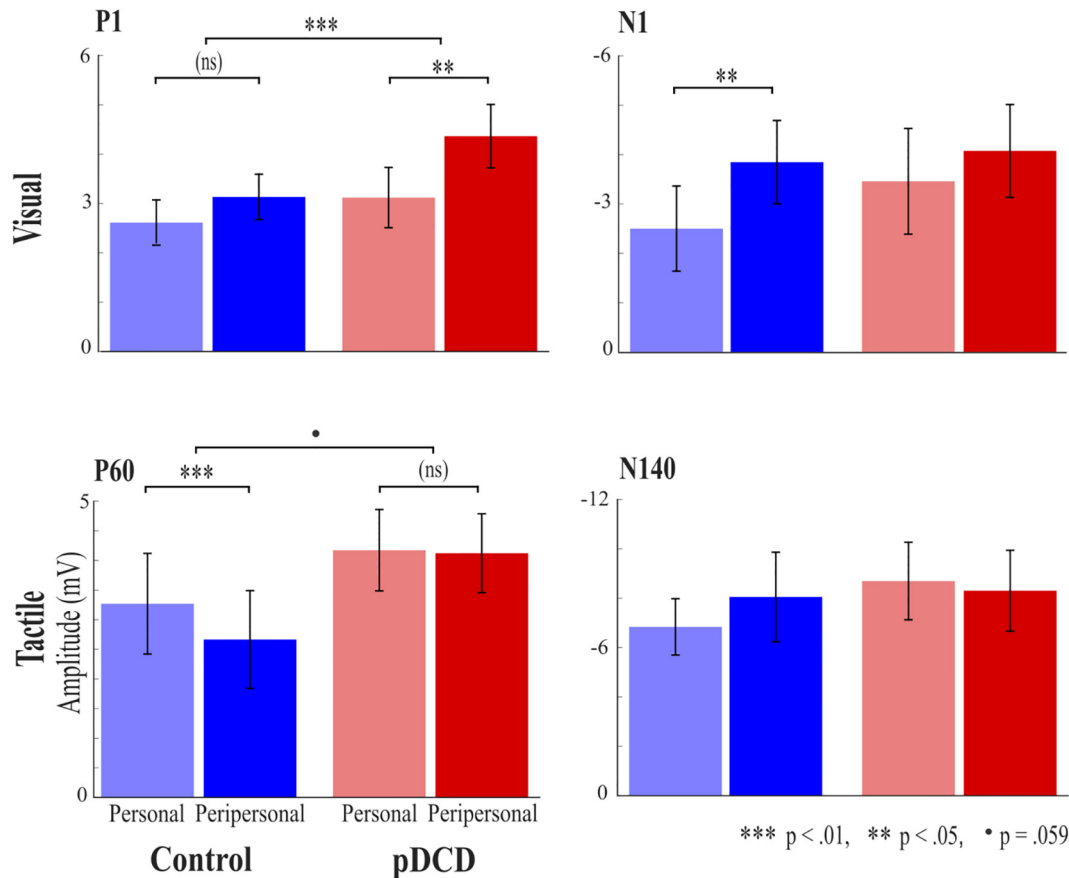


Fig. 6. Bar graphs show the mean peak amplitudes of the visual P1 and N1 components at posterior electrode sites (O1/2, PO3/4, PO7/8) as well as the tactile P60 and N140 component amplitudes at central electrode sites (C1/2, C3/4, C5/6, CP3/4, CP5/6) for each group and movement condition (control peripersonal, control personal, pDCD peripersonal and pDCD personal). Error bars show $1 \pm$ SD.

recruitment of sensorimotor regions responsible for movement programming towards unseen personal space. It is interesting that this difference manifested only following cues to prepare movements towards the unseen goal location in personal space and not towards the visible peripersonal goal location. This may reflect a relative difficulty in representing areas of space for movement preparation that cannot be directly accessed by vision. Further studies are required in order to track the contribution of beta desynchrony to motor performance in DCD and its potential implications for how individuals with DCD plan and represent different actions before executing them.

5. Conclusion

A detailed understanding of the brain mechanisms responsible for the deficits experienced by individuals with DCD is profoundly lacking in the literature. This is particularly evident for the literature concerning adults with DCD. From the few studies to date, key findings suggest a deficit in visual-spatial attentional processing in DCD. Mechanisms of covert attentional orienting, and their consequences for perceptual processing are increasingly being linked to the mechanisms of effective movement preparation. Compared to a group of matched controls, adults with pDCD demonstrated a distinct pattern of sensory prioritisation during movement preparation. The pDCD group appeared to selectively enhance visual processing at the goal location of movements towards visible peripersonal space in front of them to a greater extent than controls, however the pDCD group did not show prioritisation of tactile processing in an area of unseen personal space. The findings suggest that individuals with DCD may be selectively impaired at using somatosensory signals during movement preparation, which could underlie their suggested over-reliance on vision. Taken together the results of this study contribute to our understanding of the continued difficulties associated with pDCD in adulthood and suggest reduced efficiency in motor preparation towards the body and a difficulty with adaptively modulating sensory processing in the context of movement preparation.

Acknowledgements

This work was supported by a doctoral studentship awarded to XEJ provided by the Economic and Social Research Council

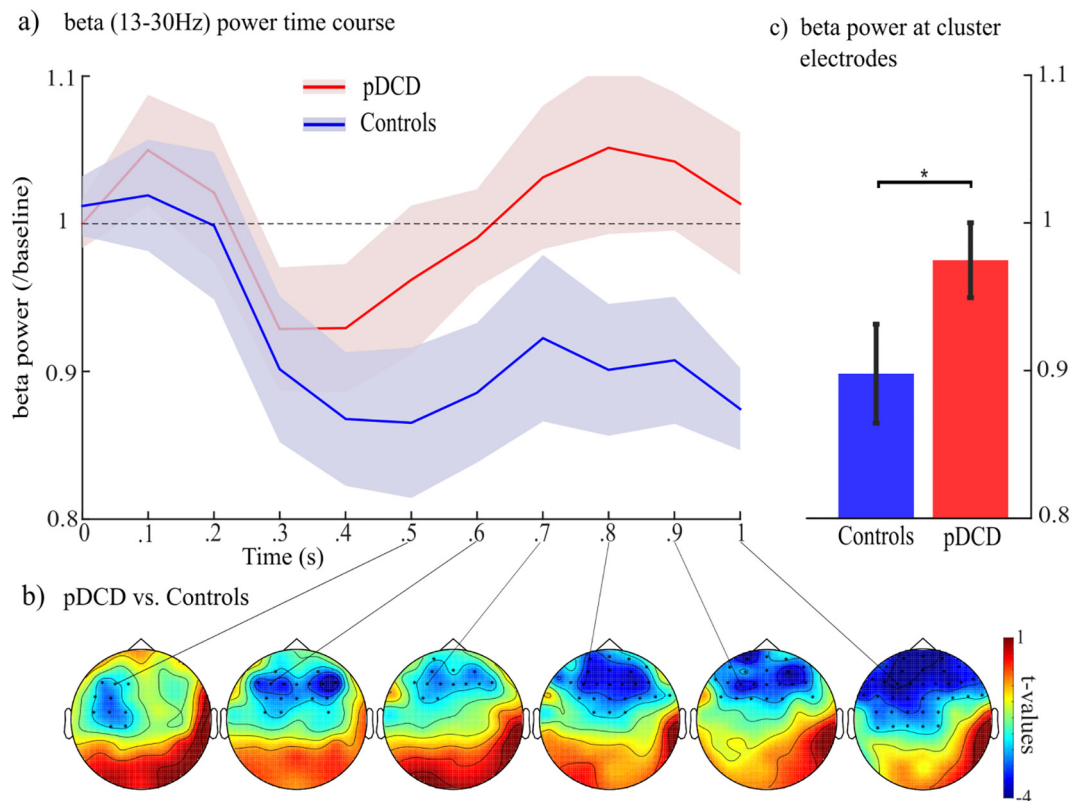


Fig. 7. Power in the beta band (13-30Hz) following movement cues. a) Beta power across time at a representative cluster electrode (F3) following cues to prepare a movement towards an unseen area of personal space on the body surface. Values below 1 (dotted line) indicate a decrease from baseline. Shaded areas represent \pm SD. b) Topographies of the differences in beta power between the pDCD and control groups at six time points following the movement cue towards personal space on the body surface. Significant cluster electrodes are marked. c) Beta power relative to baseline for each group, averaged over both movement cues (personal vs. peripersonal) from 0.5 to 1 s. Error bars represent \pm SD.

(ESRC), UK.

References

- American Psychiatric Association (2013). *Highlights of changes from DSM-IV-TR to DSM-5* Washington: American Psychiatric Association. <https://doi.org/10.1176/appi.focus.11.4.525>.
- Astafiev, S. V., Shulman, G. L., Stanley, C. M., Snyder, A. Z., Van Essen, D. C., & Corbetta, M. (2003). Functional organization of human intraparietal and frontal cortex for attending, looking, and pointing. *The Journal of Neuroscience: The Official Journal of the Society for Neuroscience*, 23(11), 4689–4699 <http://doi.org/23/11/4689> [pii].
- Bair, W.-N., Barela, J. A., Whittall, J., Jeka, J. J., & Clark, J. E. (2011). Children with Developmental Coordination Disorder benefit from using vision in combination with touch information for quiet standing. *Gait & Posture*, 34(2), 183–190. <https://doi.org/10.1016/j.gaitpost.2011.04.007>.
- Baldauf, D. (2018). Visual selection of the future reach path in obstacle avoidance. *Journal of Cognitive Neuroscience*, 30(12), 1846–1857. https://doi.org/10.1162/jocn_a.01310.
- Baldauf, D., Cui, H., & Andersen, R. A. (2008). The posterior parietal cortex encodes in parallel both goals for double-reach sequences. *The Journal of Neuroscience: The Official Journal of the Society for Neuroscience*, 28(40), 10081–10082. <https://doi.org/10.1523/JNEUROSCI.3423-08.2008>.
- Baldauf, D., & Deubel, H. (2009). Attentional selection of multiple goal positions before rapid hand movement sequences: An event-related potential study. *Journal of Cognitive Neuroscience*, 21(1), 18–29. <https://doi.org/10.1162/jocn.2008.21021>.
- Baldauf, D., & Deubel, H. (2010). Attentional landscapes in reaching and grasping. *Vision Research*. <https://doi.org/10.1016/j.visres.2010.02.008>.
- Brown-Lum, M., & Zwicker, J. G. (2015). Brain imaging increases our understanding of developmental coordination disorder: A review of literature and future directions. *Current Developmental Disorders Reports*, 2(2), 131–140. <https://doi.org/10.1007/s40474-015-0046-6>.
- Cantell, M. H., Smyth, M. M., & Ahonen, T. P. (2003). Two distinct pathways for developmental coordination disorder: Persistence and resolution. *Human Movement Science*, 22(4–5), 413–431. <https://doi.org/10.1016/j.humov.2003.09.002>.
- Chen, W.-Y., Wilson, P. H., & Wu, S. K. (2012). Deficits in the covert orienting of attention in children with Developmental Coordination Disorder: Does severity of DCD count? *Research in Developmental Disabilities*, 33(5), 1516–1522. <https://doi.org/10.1016/j.ridd.2012.03.005>.
- Cheyne, D. O. (2013). MEG studies of sensorimotor rhythms: A review. *Experimental Neurology*, 245, 27–39. <https://doi.org/10.1016/j.expneurol.2012.08.030>.
- Corbetta, M., Akbudak, E., Conturo, T. E., Snyder, A. Z., Ollinger, J. M., Drury, H. A., ... Shulman, G. L. (1998). A common network of functional areas for attention and eye movements. *Neuron*, 21(4), 761–773. [https://doi.org/10.1016/S0896-6273\(00\)80593-0](https://doi.org/10.1016/S0896-6273(00)80593-0).
- Cousins, M., & Smyth, M. M. (2003). Developmental coordination impairments in adulthood. *Human Movement Science*, 22(4–5), 433–459. <https://doi.org/10.1016/j.humov.2003.09.003>.
- Debrabant, J., Gheysen, F., Caeyenberghs, K., Van Waelvelde, H., & Vingerhoets, G. (2013). Neural underpinnings of impaired predictive motor timing in children with Developmental Coordination Disorder. *Research in Developmental Disabilities*, 34(5), 1478–1487. <https://doi.org/10.1016/j.ridd.2013.02.008>.
- Deconinck, F. J. A., De Clercq, D., Van Coster, R., Oostra, A., Dewitte, G., Savelsbergh, G. J. P., ... Lenoir, M. (2008). Sensory contributions to balance in boys with

- Developmental Coordination Disorder. *Adapted Physical Activity Quarterly*, 25(1), 17–35. <https://doi.org/10.1123/apaq.25.1.17>.
- Delorme, A., & Makeig, S. (2004). EEGLAB: An open source toolbox for analysis of single-trial EEG dynamics including independent component analysis. *Journal of Neuroscience Methods*, 134(1), 9–21. <https://doi.org/10.1016/j.jneumeth.2003.10.009>.
- Deubel, H., & Schneider, W. X. (1996). Saccade target selection and object recognition: Evidence for a common attentional mechanism. *Vision Research*, 36(12), 1827–1837. [https://doi.org/10.1016/0042-6989\(95\)00294-4](https://doi.org/10.1016/0042-6989(95)00294-4).
- Eimer, M. (1993). Spatial cueing, sensory gating and selective response preparation: An ERP study on visuo-spatial orienting. *Electroencephalography and Clinical Neurophysiology/Evoked Potentials*, 88(5), 408–420. [https://doi.org/10.1016/0168-5597\(93\)90017-J](https://doi.org/10.1016/0168-5597(93)90017-J).
- Eimer, M., Forster, B., Velzen, J. Van, & Prabhu, G. (2005). Covert manual response preparation triggers attentional shifts: ERP evidence for the premotor theory of attention. *Neuropsychologia*, 43(6), 957–966. <https://doi.org/10.1016/j.neuropsychologia.2004.08.011>.
- Eimer, M., Van Velzen, J., Gherri, E., & Press, C. (2006). Manual response preparation and saccade programming are linked to attention shifts: ERP evidence for covert attentional orienting and spatially specific modulations of visual processing. *Brain Research*, 1105(1), 7–19. <https://doi.org/10.1016/j.brainres.2005.10.060>.
- Engel, A. K., & Fries, P. (2010). Beta-band oscillations—signalling the status quo? *Current Opinion in Neurobiology*, 20(2), 156–165. <https://doi.org/10.1016/j.conb.2010.02.015>.
- Forster, B., & Eimer, M. (2007). Covert unimanual response preparation triggers attention shifts to effectors rather than goal locations. *Neuroscience Letters*, 419(2), 142–146. <https://doi.org/10.1016/j.neulet.2007.04.027>.
- Gherri, E., & Eimer, M. (2008). Links between eye movement preparation and the attentional processing of tactile events: An event-related brain potential study. *Clinical Neurophysiology*, 119(11), 2587–2597. <https://doi.org/10.1016/j.clinph.2008.07.214>.
- Gherri, E., Van Velzen, J., & Eimer, M. (2009). The instructed context of a motor task modulates covert response preparation and shifts of spatial attention. *Psychophysiology*, 46(3), 655–667. <https://doi.org/10.1111/j.1469-8986.2009.00800.x>.
- Heinze, H. J., Mangun, G. R., Burchert, W., Hinrichs, H., Scholz, M., Münte, T. F., ... Hillyard, S. A. (1994). Nature, brain activity in visual selective attention.pdf. *Nature*. <https://doi.org/10.1038/372543a0>.
- Henderson, S. E., & Hall, D. (2008). Concomitants of clumsiness in young schoolchildren. *Developmental Medicine & Child Neurology*, 24(5), 448–460. <https://doi.org/10.1111/j.1469-8749.1982.tb13649.x>.
- Henderson, S. E., Sugden, D. A., Barnett, A. L. (2007). Movement Assessment Battery for Children-2: MABC-2. Pearson Assessment.
- Hill, E. L. (1998). A dyspraxic deficit in specific language impairment and developmental coordination disorder? Evidence from hand and arm movements. *Developmental Medicine and Child Neurology*, 40(6), 388–395. [https://doi.org/10.1016/S0167-9457\(98\)00017-7](https://doi.org/10.1016/S0167-9457(98)00017-7).
- Hillyard, S. A., & Anllo-Vento, L. (1998). Event-related brain potentials in the study of visual selective attention. *Proceedings of the National Academy of Sciences of the United States of America*, 95(3), 781–787. <https://doi.org/10.1073/pnas.95.3.781>.
- Hillyard, S. A., Vogel, E. K., & Luck, S. J. (1998). Sensory gain control (amplification) as a mechanism of selective attention: Electrophysiological and neuroimaging evidence. *Philosophical Transactions of the Royal Society B: Biological Sciences*, 353(1373), 1257–1270. <https://doi.org/10.1098/rstb.1998.0281>.
- Irwin Robert, E., & Gordon, D. (1998). Eye movements, attention and trans-saccadic memory. *Visual Cognition*, 5(1–2), 127–155. <https://doi.org/10.1080/713756783>.
- Job, X. E., de Fockert, J. W., & van Velzen, J. (2016). Action preparation modulates sensory perception in unseen personal space: An electrophysiological investigation. *Neuropsychologia*, 89, 445–452. <https://doi.org/10.1016/j.neuropsychologia.2016.07.021>.
- Kashiwagi, M., Iwaki, S., Narumi, Y., Tamai, H., & Suzuki, S. (2009). Parietal dysfunction in developmental coordination disorder: A functional MRI study. *NeuroReport*, 20(15), 1319–1324. <https://doi.org/10.1097/WNR.0b013e32832f4d87>.
- Kilavik, B. E., Zaepffel, M., Brovelli, A., MacKay, W. A., & Riehle, A. (2013). The ups and downs of beta oscillations in sensorimotor cortex. *Experimental Neurology*, 245, 15–26. <https://doi.org/10.1016/j.expneurol.2012.09.014>.
- Kirby, A., Edwards, L., Sugden, D., & Rosenblum, S. (2010). The development and standardization of the Adult Developmental Co-ordination Disorders/Dyspraxia Checklist (ADC). *Research in Developmental Disabilities*, 31(1), 131–139. <https://doi.org/10.1016/j.ridd.2009.08.010>.
- Kirby, A., & Sugden, D. A. (2007). Children with developmental coordination disorders. *Journal of the Royal Society of Medicine*, 100(4), 182–186. <https://doi.org/10.1258/jrsm.100.4.182>.
- Kirby, A., Sugden, D., & Purcell, C. (2014). Diagnosing developmental coordination disorders. *Archives of Disease in Childhood*. <https://doi.org/10.1136/archdischild-2012-303569>.
- Kuhn, A. A., Doyle, L., Pogossyan, A., Yarrow, K., Kupsch, A., Schneider, G.-H., ... Brown, P. (2006). Modulation of beta oscillations in the subthalamic area during motor imagery in Parkinson's disease. *Brain*, 129(3), 695–706. <https://doi.org/10.1093/brain/awh715>.
- Langevin, L. M., Macmaster, F. P., Crawford, S., Lebel, C., & Dewey, D. (2014). Common white matter microstructure alterations in pediatric motor and attention disorders. *Journal of Pediatrics*, 164(5), <https://doi.org/10.1016/j.jpeds.2014.01.018>.
- Licari, M. K., Billington, J., Reid, S. L., Wann, J. P., Elliott, C. M., Winsor, A. M., ... Bynevelt, M. (2015). Cortical functioning in children with developmental coordination disorder: A motor overflow study. *Experimental Brain Research*, 233(6), 1703–1710. <https://doi.org/10.1007/s00221-015-4243-7>.
- Lindsen, J. P., Jones, R., Shimajo, S., & Bhattacharya, J. (2010). Neural components underlying subjective preferential decision making. *NeuroImage*, 50(4), 1626–1632. <https://doi.org/10.1016/j.neuroimage.2010.01.079>.
- Lingam, R., Hunt, L., Golding, J., Jongmans, M., & Emond, A. (2009). Prevalence of Developmental Coordination Disorder using the DSM-IV at 7 years of age: A UK Population-Based Study. *Pediatrics*, 123(4).
- Losse, A., Henderson, S. E., Elliman, D., Hall, D., Knight, E., & Jongmans, M. J. (1991). Clumsiness in Children: Do the Grow Out of It? A 10-Year Follow-Up Study. *Developmental Medicine and Child Neurology*, 33, 55–68.
- Luft, C. D. B., & Bhattacharya, J. (2015). Aroused with heart: Modulation of heartbeat evoked potential by arousal induction and its oscillatory correlates. *Scientific Reports*, 5, 15717. <https://doi.org/10.1038/srep15717>.
- Mangun, G. R., Hillyard, S. A., & Luck, S. J. (1993). *Electrocortical substrates of visual selective attention. Attention and Performance XIV*.
- Maris, E., & Oostenveld, R. (2007). Nonparametric statistical testing of EEG- and MEG-data. *Journal of Neuroscience Methods*, 164(1), 177–190. <https://doi.org/10.1016/j.jneumeth.2007.03.024>.
- McLeod, K. R., Langevin, L. M., Goodyear, B. G., & Dewey, D. (2014). Functional connectivity of neural motor networks is disrupted in children with developmental coordination disorder and attention-deficit/hyperactivity disorder. *NeuroImage: Clinical*, 4, 566–575. <https://doi.org/10.1016/j.nicl.2014.03.010>.
- Oostenveld, R., Fries, P., Maris, E., & Schoffelen, J. M. (2011). FieldTrip: Open source software for advanced analysis of MEG, EEG, and invasive electrophysiological data. *Computational Intelligence and Neuroscience*, 2011. <https://doi.org/10.1155/2011/156869>.
- Park, H.-D., Correia, S., Ducorps, A., & Tallon-Baudry, C. (2014). Spontaneous fluctuations in neural responses to heartbeats predict visual detection. *Nature Neuroscience*, 17(4), 612–618. <https://doi.org/10.1038/nn.3671>.
- Perry, R. J., & Zeki, S. (2000). The neurology of saccades and covert shifts in spatial attention. *Brain*, 123(11), 2273–2288. <https://doi.org/10.1093/brain/123.11.2273>.
- Peters, L. H. J., Maathuis, C. G. B., & Hadders-Algra, M. (2013). Neural correlates of developmental coordination disorder. *Developmental Medicine & Child Neurology*, 55(s4), 59–64. <https://doi.org/10.1111/dmcn.12309>.
- Pfurtscheller, G., & Berghold, A. (1989). Patterns of cortical activation during planning of voluntary movement. *Electroencephalography and Clinical Neurophysiology*, 72(3), 250–258. [https://doi.org/10.1016/0013-4694\(89\)90250-2](https://doi.org/10.1016/0013-4694(89)90250-2).
- Pfurtscheller, G., & Lopes da Silva, F. H. (1999). Event-related EEG/MEG synchronization and desynchronization: Basic principles. *Clinical Neurophysiology*, 110(11), 1842–1857. [https://doi.org/10.1016/S1388-2457\(99\)00141-8](https://doi.org/10.1016/S1388-2457(99)00141-8).
- Pfurtscheller, G., & Neuper, C. (1997). Motor imagery activates primary sensorimotor area in humans. *Neuroscience Letters*, 239(2–3), 65–68. [https://doi.org/10.1016/S0304-3940\(97\)00889-6](https://doi.org/10.1016/S0304-3940(97)00889-6).
- Pfurtscheller, G., Stancák, A., & Neuper, C. (1996). Post-movement beta synchronization. A correlate of an idling motor area? *Electroencephalography and Clinical Neurophysiology*, 98(4), 281–293. [https://doi.org/10.1016/0013-4694\(95\)00258-8](https://doi.org/10.1016/0013-4694(95)00258-8).
- Querne, L., Berquin, P., Vernier-Hauvette, M. P., Fall, S., Deltour, L., Meyer, M. E., & de Marco, G. (2008). Dysfunction of the attentional brain network in children with

- Developmental Coordination Disorder: A fMRI study. *Brain Research*, 1244, 89–102. <https://doi.org/10.1016/j.brainres.2008.07.066>.
- Sandkühler, S., Bhattacharya, J., Schoffelen, J., Maris, E., & Oostenveld, R. (2008). Deconstructing Insight: EEG correlates of insightful problem solving. *PLoS ONE*, 3(1), e1459. <https://doi.org/10.1371/journal.pone.0001459>.
- Schneider, W., Eschman, A., & Zuccolotto, A. (2002). E-Prime reference guide. *Psychology Software Tools*, 3(1), 1. <https://doi.org/10.1186/1756-0381-3-1>.
- Sugden, D. A. (2006). Development Coordination Disorder as a specific learning difficulty. *Leeds consensus statement (2006). Seminar series* (pp. 4–8). .
- Summers, J., Larkin, D., & Dewey, D. (2008). Activities of daily living in children with developmental coordination disorder: Dressing, personal hygiene, and eating skills. *Human Movement Science*, 27(2), 215–229. <https://doi.org/10.1016/j.humov.2008.02.002>.
- Tsai, C.-L., Pan, C.-Y., Cherng, R.-J., Hsu, Y.-W., & Chiu, H.-H. (2009). Mechanisms of deficit of visuospatial attention shift in children with developmental coordination disorder: A neurophysiological measure of the endogenous Posner paradigm. *Brain and Cognition*, 71(3), 246–258. <https://doi.org/10.1016/j.bandc.2009.08.006>.
- Visser, J. (2003). Developmental coordination disorder: A review of research on subtypes and comorbidities. *Human Movement Science*. <https://doi.org/10.1016/j.humov.2003.09.005>.
- Wechsler, D. (1997). *WAIS-III administration and scoring manual* San Antonio, TX: The Psychological Corporation. <https://doi.org/10.1177/1073191102009001003>.
- Wilmot, K., & Byrne, M. (2014). Grip selection for sequential movements in children and adults with and without Developmental Coordination Disorder. *Human Movement Science*, 36, 272–284. <https://doi.org/10.1016/j.humov.2013.07.015>.
- Wilmot, K., Byrne, M., & Barnett, A. L. (2013). Reaching to throw compared to reaching to place: A comparison across individuals with and without Developmental Coordination Disorder. *Research in Developmental Disabilities*, 34(1), 174–182. <https://doi.org/10.1016/j.ridd.2012.07.020>.
- Wilson, P. H., & Maruff, P. (1999). Deficits in the endogenous control of covert visuospatial attention in children with developmental coordination disorder. *Human Movement Science*, 18(2–3), 421–442. [https://doi.org/10.1016/S0167-9457\(99\)00017-2](https://doi.org/10.1016/S0167-9457(99)00017-2).
- Wilson, P. H., Maruff, P., Ives, S., & Currie, J. (2001). Abnormalities of motor and praxis imagery in children with DCD. *Human Movement Science*, 20(1–2), 135–159. [https://doi.org/10.1016/S0167-9457\(01\)00032-X](https://doi.org/10.1016/S0167-9457(01)00032-X).
- Wilson, P. H., Maruff, P., & McKenzie, B. E. (1997). Covert orienting of visuospatial attention in children with developmental coordination disorder. *Developmental Medicine and Child Neurology*, 39(11), 736–745.
- Wilson, P. H., & McKenzie, B. E. (1998). Information processing deficits associated with developmental coordination disorder: A meta-analysis of research findings. *Journal of Child Psychology and Psychiatry*, 39(6), 829–840. <https://doi.org/10.1111/1469-7610.00384>.
- Wilson, P. H., Ruddock, S., Smits-Engelsman, B., Polatajko, H., & Blank, R. (2013). Understanding performance deficits in developmental coordination disorder: A meta-analysis of recent research. *Developmental Medicine and Child Neurology*. <https://doi.org/10.1111/j.1469-8749.2012.04436.x>.
- Wilson, P. H., Smits-Engelsman, B., Caeyenberghs, K., Steenbergen, B., Sugden, D., Clark, J., ... Blank, R. (2017). Cognitive and neuroimaging findings in developmental coordination disorder: New insights from a systematic review of recent research. *Developmental Medicine & Child Neurology*. <https://doi.org/10.1111/dmcn.13530>.
- Zoia, S., Castiello, U., Blason, L., & Scabar, A. (2005). Reaching in children with and without developmental coordination disorder under normal and perturbed vision. *Developmental Neuropsychology*, 27(2), 257–273. https://doi.org/10.1207/s15326942dn2702_4.
- Zwicker, J. G., Missiuna, C., Harris, S. R., & Boyd, L. A. (2010). Brain activation of children with developmental coordination disorder is different than peers. *Pediatrics*, 126(3).
- Zwicker, J. G., Missiuna, C., Harris, S. R., & Boyd, L. A. (2011). Brain activation associated with motor skill practice in children with developmental coordination disorder: An fMRI study. *International Journal of Developmental Neuroscience*, 29(2), 145–152. <https://doi.org/10.1016/j.ijdevneu.2010.12.002>.
- Zwicker, J. G., Missiuna, C., Harris, S. R., & Boyd, L. A. (2012). Developmental coordination disorder: A review and update. *European Journal of Paediatric Neurology*. <https://doi.org/10.1016/j.ejpn.2012.05.005>.