



# Hook, Line and Infection: A Guide to Culturing Parasites, Establishing Infections and Assessing Immune Responses in the Three-Spined Stickleback

Alexander Stewart<sup>\*</sup>, Joseph Jackson<sup>§</sup>, Iain Barber<sup>¶</sup>,  
Christophe Eizaguirre<sup>||</sup>, Rachel Paterson<sup>\*</sup>, Pieter van West<sup>#</sup>,  
Chris Williams<sup>\*\*</sup> and Joanne Cable<sup>\*,1</sup>

<sup>\*</sup>Cardiff University, Cardiff, United Kingdom

<sup>§</sup>University of Salford, Salford, United Kingdom

<sup>¶</sup>University of Leicester, Leicester, United Kingdom

<sup>||</sup>Queen Mary University of London, London, United Kingdom

<sup>#</sup>Institute of Medical Sciences, Aberdeen, United Kingdom

<sup>\*\*</sup>National Fisheries Service, Cambridgeshire, United Kingdom

<sup>1</sup>Corresponding author: E-mail: CableJ@cardiff.ac.uk

## Contents

1. Introduction	3
2. Stickleback Husbandry	7
2.1 Ethics	7
2.2 Collection	7
2.3 Maintenance	9
2.4 Breeding sticklebacks in vivo and in vitro	10
2.5 Hatchery	15
3. Common Stickleback Parasite Cultures	16
3.1 <i>Argulus foliaceus</i>	17
3.1.1 Introduction	17
3.1.2 Source, culture and infection	18
3.1.3 Immunology	22
3.2 <i>Camallanus lacustris</i>	22
3.2.1 Introduction	22
3.2.2 Source, culture and infection	23
3.2.3 Immunology	25
3.3 <i>Diplostomum</i> Species	26
3.3.1 Introduction	26
3.3.2 Source, culture and infection	27
3.3.3 Immunology	28

3.4	<i>Glugea anomala</i>	30
3.4.1	Introduction	30
3.4.2	Source, culture and infection	30
3.4.3	Immunology	31
3.5	<i>Gyrodactylus</i> Species	31
3.5.1	Introduction	31
3.5.2	Source, culture and infection	32
3.5.3	Immunology	34
3.6	<i>Saprolegnia parasitica</i>	35
3.6.1	Introduction	35
3.6.2	Source, culture and infection	36
3.6.3	Immunology	37
3.7	<i>Schistocephalus solidus</i>	38
3.7.1	Introduction	38
3.7.2	Source, culture and infection	39
3.7.3	Immunology	43
4.	Treating Common Infections	44
5.	Coinfecting Parasites	48
6.	Summary	50
	Acknowledgments	51
	References	51

## Abstract

The three-spined stickleback (*Gasterosteus aculeatus*) is a model organism with an extremely well-characterized ecology, evolutionary history, behavioural repertoire and parasitology that is coupled with published genomic data. These small temperate zone fish therefore provide an ideal experimental system to study common diseases of coldwater fish, including those of aquacultural importance. However, detailed information on the culture of stickleback parasites, the establishment and maintenance of infections and the quantification of host responses is scattered between primary and grey literature resources, some of which is not readily accessible. Our aim is to lay out a framework of techniques based on our experience to inform new and established laboratories about culture techniques and recent advances in the field. Here, essential knowledge on the biology, capture and laboratory maintenance of sticklebacks, and their commonly studied parasites is drawn together, highlighting recent advances in our understanding of the associated immune responses. In compiling this guide on the maintenance of sticklebacks and a range of common, taxonomically diverse parasites in the laboratory, we aim to engage a broader interdisciplinary community to consider this highly tractable model when addressing pressing questions in evolution, infection and aquaculture.



## 1. INTRODUCTION

Aquaculture is currently the fastest growing animal food-producing sector, increasing by 6% annually in the 2000s (The World Bank, 2013a). In 2014, 73.8 million tonnes of fish were farmed, rising from 55.7 million tonnes in 2009 (FAO, 2016). To maintain the current level of consumption, whilst compensating for shortfalls from fisheries that have reached their maximum potential output, global aquaculture production will have to reach 93 million tonnes by 2030 (The World Bank, 2013b). As with agriculture, fish production can be increased via two main approaches: increasing the area turned over to the industry or improving yields. With the use of terrestrial and aquatic environments reaching their sustainable maximum, the focus of aquaculture is now firmly set on yield improvement via selective breeding, genetic modification and feed conversion efficiency (Myhr and Dalmo, 2005; FAO, 2016; Janssen et al., 2016). These goals, however, must be coupled with a better understanding of host–parasite interactions and improved disease prevention, since a major inhibitory factor to fisheries' yield improvement are losses to infectious diseases, many of which are caused by parasitic organisms (Meyer, 1991).

Teleosts diverged from other vertebrates some 285–333 million years ago (Near et al., 2012) and are the largest group of vertebrates (c. 30,000 species) with a diverse range of morphological and behavioural characteristics (Near et al., 2012). This diversity is attributed, in part, to a suspected whole-genome duplication event c. 320–404 million years ago, after the divergence of ray-finned and lobe-finned fish, but prior to the teleost radiation (Amores et al., 1998; Hoegg et al., 2004). Such diversity makes the establishment of suitable teleost models challenging. While the zebrafish (*Danio rerio*) has been adopted by many research communities and is especially suitable for developmental biology, embryology and genetic disease research (e.g., Parnig et al., 2002; Wienholds et al., 2005; Zon and Peterson, 2005; Lieschke and Currie, 2007), it does not sufficiently resemble economically important food fish such as salmon that tend to be temperate, ancestrally marine and omnivorous.

One candidate model species is the three-spined stickleback (*Gasterosteus aculeatus*) hereafter referred to as the 'stickleback', which has been described as a supermodel for ecological, evolutionary and genomic studies (Shapiro et al., 2004; Colosimo et al., 2005; Gibson, 2005; Barber and Nettleship, 2010; Jones et al., 2012; Barber, 2013). This ancestrally marine fish occurs

in coastal marine, brackish and freshwater environments north of 30°N latitude. Sticklebacks have been utilized as a model of adaptive radiation due to their remarkable morphological diversity, including variation in size, shape and protective armour, which has arisen following the postglacial colonization of innumerable freshwaters from marine refugia (Schluter, 1993; Reimchen, 1994; Walker, 1997; Colosimo et al., 2005; Jones et al., 2012). The reproductive isolation of populations inhabiting a wide variety of habitat types and exploiting diverse resources are generally thought to be the primary causes of stickleback adaptive radiation (Schluter, 1993; Lackey and Boughman, 2016), with phenologic differences among morphotypes being linked to idiosyncratic genome variation (Jones et al., 2012; Feulner et al., 2015; Marques et al., 2016; reviewed in Lackey and Boughman, 2016) and at least partially controlled by the epigenome (Smith et al., 2015a). Of particular interest are the Canadian limnetic–benthic ‘species pairs’ (that inhabit the pelagic and littoral zones respectively) and the river–lake morphs of sticklebacks which, despite that fact that hybridization is possible both in nature and the laboratory, display high levels of reproductive isolation (McPhail, 1992; Gow et al., 2006; Berner et al., 2009; Eizaguirre et al., 2011). In the case of the limnetic–benthic pairs, both forms are thought to have evolved from independent marine ancestors (McPhail, 1992), while a mixed pattern of morphotypes is likely the cause of the river–lake differentiation (Reusch et al., 2001a; Berner et al., 2008). Supporting predictions of adaptive radiation, the limnetic and benthic stickleback forms each have growth advantages in their native habitats, which are lost in the alternative habitat, while hybrids are intermediate; the efficiency of this exploitation matches the observed morphological differences (Schluter, 1993, 1995). The same holds true for river–lake fish ecotypes, which are locally adapted and suffer from translocations in nonnative habitats (Eizaguirre et al., 2012a; Räsänen and Hendry, 2014; Stutz et al., 2015).

In addition to their wide geographic range and diverse morphology, the stickleback has many amenable features that make it ideal for experimental studies of host–parasite interactions. First, sticklebacks are easily maintained and bred in the laboratory as a result of their general hardiness, small size and low maintenance cost. Second, within their habitat range, sticklebacks can be collected easily from the wild. Third, unlike many vertebrates, there is comprehensive knowledge of stickleback parasitology (Arme and Owen, 1967; Kalbe et al., 2002; Barber and Scharsack, 2010; MacNab and Barber, 2012), natural history and ecology (Wootton, 1976, 1984a;

Östlund-Nilsson et al., 2006), evolutionary history (Schluter, 1996; Taylor and McPhail, 1999; McKinnon and Rundle, 2002; MacColl, 2009), physiology (Taylor and McPhail, 1986; Pottinger et al., 2002) and behaviour (Tinbergen and van Iersel, 1947; Giles, 1983; Milinski, 1985, 1987; Milinski and Bakker, 1990; Reusch et al., 2001b; Barber et al., 2004). Fourth, publication of the stickleback genome (Kingsley, 2003; Hubbard et al., 2007; Jones et al., 2012) coupled with advanced postgenomic techniques makes this fish an ideal model for molecular study, including host immunology (Kurtz et al., 2004; Hibbeler et al., 2008; Brown et al., 2016; Hablützel et al., 2016). All of this allows one to focus, not on a single aspect of the system, but to take a holistic systems approach to studying host–parasite interactions.

The regional parasitic fauna of sticklebacks is remarkably diverse, covering nine phyla to date (Kalbe et al., 2002; Wegner et al., 2003b; Barber, 2007; Eizaguirre et al., 2011), largely as a result of the host's wide geographical distribution, diverse habitat exploitation, varied diet and central position in food webs. Virtually all niches of the stickleback have been exploited by at least one parasite species, including the skin and fins, gills, muscle, eye lens and humour, body cavity, swim bladder, liver, intestine, kidney and urinary bladder (e.g., Kalbe et al., 2002). Over 200 parasite species have been described infecting the stickleback, although many of these are cross-species infections from other teleosts (for complete list see Barber, 2007). Following the recent surge of interest relating variation in the gut microbiome to disease progression (Holmes et al., 2011), the stickleback's microbiome appears to be largely determined by genetic and sex-dependant factors rather than transient environmental effects (Bolnick et al., 2014; Smith et al., 2015b); although differences in gut microbiota are also correlated with variation in diet (Bolnick et al., 2014). Heightened innate immune responses also appear to result in a less diverse microbiota (Milligan-Myhre et al., 2016); however, the reciprocal relationship between microbiota and parasites has yet to be studied in this system.

The impact of infection on host behaviour is well documented (Giles, 1983; Milinski, 1985, 1990; Milinski and Bakker, 1990; Poulin, 1995; Urdal et al., 1995; Barber et al., 2004; Spagnoli et al., 2016) but uncontrolled parasitic infections may confound results (as recently demonstrated in zebrafish; Spagnoli et al., 2016). Parasitic contamination applies not only to behavioural studies but also to all research (immunological, parasitological, molecular etc.) where uncontrolled parasite infections other than those under investigation may have confounding effects, via stimulation of the

immune system or interactions with coinfecting parasites. While pharmaceutical treatments may be useful to control or limit confounding parasitic factors, their use is a double-edged sword bringing other problems linked to the severity of the treatment (Buchmann et al., 2004; Srivastava et al., 2004), and it can never be assumed that such treatments have 100% efficacy (Schelkle et al., 2009). It is also increasingly important that infection models can conform to a 'wild' or 'uncaged' state (Leslie, 2010) to understand the complex interaction of parasites, host immunological responses and ecological variation that are the prevailing state. The immune systems of wild animals and humans are rarely naïve and coinfection is the norm (e.g., Lello et al., 2004; Behnke et al., 2005, 2009; Benesh and Kalbe, 2016), partly explaining the many inconsistencies between laboratory models and wild animals.

The difficulty and importance of maintaining parasite populations in the laboratory is often underestimated and partly hampered by the lack of published practical information on establishing and maintaining host–parasite systems. In addition, molecular-based (drug) and immunological-based (vaccine) approaches are increasingly needed for mitigating the impacts of disease. Effective models of aquaculture fish species are limited; the zebrafish, although ideal for molecular studies, is unrepresentative in terms of habitat, evolutionary history and parasitology. In this respect the stickleback provides a useful study species, being susceptible to a range of problematic aquaculture diseases, including those caused by the oomycete *Saprolegnia parasitica*, *Diplostomum* trematodes and *Gyrodactylus* monogeneans, as well other parasites closely related to aquaculture-relevant species. This review first covers the basic husbandry of the three-spined stickleback and then focuses on the parasites that are most frequently used in research projects: *Argulus* spp., *Camallanus lacustris*, *Diplostomum* spp., *Gyrodactylus* spp., *S. parasitica* and *Schistocephalus solidus*. For each taxon, culture methods, experimental infection techniques and host immune responses are outlined. *Glugea anomala*, although not widely used experimentally, is a common infection of sticklebacks and is included in this review to stimulate future research. Whilst all of these parasites are common, until now there has been no single resource that summarizes all available culture methods. We also provide an overview of the host's immunological responses to these parasites, and to put these studies in a wider context we recommend reviews of vertebrate (Murphy and Weaver, 2016; Owen et al., 2013) and teleost immunology (see Miller, 1998; Morvan et al., 1998; Press and Evensen, 1999; Claire et al., 2002; Watts et al., 2008; Takano et al., 2011; Forn-Cuni et al., 2014).

Overall, we aim to provide a comprehensive and standardized approach to support new research utilizing the three-spined stickleback as a model for experimental parasitology and immunology, while increasing awareness of the impact of any infections for nonparasitological studies.



## 2. STICKLEBACK HUSBANDRY

Here, methods for the collection, maintenance and breeding of three-spined sticklebacks are described. In some instances multiple methods are provided, the suitability of which is dependent on the focus of a particular study.

### 2.1 Ethics

All protocols carried out are subject to the relevant regulatory authority. Care, maintenance and infection of protected animals in UK laboratories are governed by local animal ethics committees and the Home Office under The Animals Scientific Procedures Act 1986. EU member states are subject to Directive 2010/63/EU on the protection of animals used for scientific purposes. The Animals Scientific Procedures Act outlines humane methods for animal euthanasia referred to as ‘Schedule 1 Procedures’. This nomenclature is used throughout the manual, but different guidelines are in place for other regulatory authorities. All experimental parasite research carried out at Cardiff University was approved by Cardiff University Ethics Committee and performed under Home Office Licence PPL 302357.

### 2.2 Collection

While some experiments require naïve hosts, for others, previous experience of endemic infections or specific ecotypes might be critical; information on fish provenance, parasite history and exposure to antiparasitic treatments is therefore essential for most studies (see [Giles, 1983](#); [Poulin, 1995](#); [Urdal et al., 1995](#); [Barber et al., 2004](#); [Spagnoli et al., 2016](#)). When acquiring sticklebacks from wild populations, we advise multiple screens for ectoparasites and dissection for macroparasites (e.g., [Kalbe et al., 2002](#)); although the latter may not be necessary, particularly for breeding, as many macroparasites often require the presence of intermediate hosts to persist. Regardless, the presence of parasites should be reported for any study, and it should never be assumed that an animal is uninfected unless bred in specific pathogen-free conditions.

Sticklebacks may be acquired from other researchers actively breeding these fish, possibly holding multiple inbred and/or outbred lines (e.g., [Mazzi et al., 2002](#); [Aeschlimann et al., 2003](#); [Frommen and Bakker, 2006](#)). Alternatively, they may be purchased from a commercial fish supplier (e.g., [Katsiadaki et al., 2002a](#)). Given the diversity and abundance of stickleback parasites, the principal of ‘buyer beware’ must apply, as rarely can a supplier guarantee ‘parasite-free’ fish and most fish will have been treated chemically (e.g., [Giles, 1983](#); [Poulin, 1995](#); [Urdal et al., 1995](#); [Barber et al., 2004](#); [Spagnoli et al., 2016](#)). Fish suppliers or researchers may be willing to provide infected sticklebacks for research or teaching, particularly in the case of overt infections, such as *G. anomala* or *S. solidus*. A third option is to collect wild fish and use them directly (e.g., [Bakker, 1993](#); [Cresko et al., 2004](#); [Bernhardt et al., 2006](#)) after treating for infections (e.g., [Soleng and Bakke, 1998](#); [Ernst and Whittington, 2001](#); [Cable et al., 2002a](#); [Morrell et al., 2012](#); [Anaya-Rojas et al., 2016](#); [Hablützel et al., 2016](#)) or breeding from these wild fish (e.g., [Mazzi et al., 2002](#); [Aeschlimann et al., 2003](#); [Wegner et al., 2003a](#); [Frommen and Bakker, 2006](#); [Eizaguirre et al., 2012b](#)).

Most institutions in Europe and continental North America neighbour a waterbody containing sticklebacks, particularly around coastal regions. Sticklebacks can be captured in commercial (e.g., [Hendry et al., 2002](#); [Gow et al., 2007](#); [MacColl et al., 2013](#)) or handmade minnow traps constructed from 2 to 3 L soft drinks bottles. Each bottle, with holes in the sides, is cut such that the spout may be inverted and reattached using cable ties to resemble a minnow trap and partially filled with pebbles so it remains immersed. Typically, the traps are placed into water with one end secured by string to a concealed marker. Bait is not normally required as sticklebacks are inquisitive and catching one fish entices others. The trap is left for a maximum of 24 h to prevent fish becoming overly stressed. Dip-netting, using a hand net, is also effective (e.g., [Gow et al., 2007](#); [Brown et al., 2016](#)), especially targeting areas of vegetation along the bank or under bridges where sticklebacks shoal and hide ([Wootton, 1976](#)). Permission should be sought from the landowner and appropriate regulatory authority before using traps or nets and these should be of a design so as not to endanger other aquatic organisms. Most wild sticklebacks will be infected with parasites ([Barber, 2007](#)) and appropriate measures must be taken to limit mortality (see [Section 4](#)). Importantly, ‘trapping’ stresses fish and compromises the immune system, but ‘netting’ can be used to sample fish in their natural state if euthanized immediately (e.g., [Brown et al., 2016](#)).



### 2.3 Maintenance

Sticklebacks are normally kept at densities not exceeding 1 fish/L to reduce fish stress (e.g., [Mazzi et al., 2002](#); [Aeschlimann et al., 2003](#); [Barber, 2005](#); [de Rooij et al., 2011](#)). Dechlorinated water is always used: 0.1–0.3 parts per million (ppm) of chlorine is lethal to the majority of fish ([Wedemeyer, 1996](#)), although brief exposure to chlorinated water (1–2 h) can be beneficial in removing some parasites ([Johnson et al., 2003](#); [Ferguson et al., 2007](#)). Dechlorinated water is typically obtained either through an activated charcoal filter, commercially available dechlorinating and water conditioning solutions (follow manufacturer's instructions) or vigorous aeration of tap water for 24 h before use. Dechlorinated water should not be fed through copper pipes as high concentrations of copper ions can kill fish ([Cardeilhac and Whitaker, 1988](#); [Sellin et al., 2005](#); [Grosell et al., 2007](#)). Although sticklebacks are normally kept in freshwater, routine addition of 0.5%–1% salt water (aquarium or marine grade) inhibits some infections (e.g., [Cresko et al., 2004](#); [Bernhardt et al., 2006](#); [Schluter, 2016](#)). Freshwater captured sticklebacks are exceptionally salt tolerant, even tolerating sea water levels (3% salt), by means of differential gene expression; particularly those associated with hypertension including MAP3K15 ([Wang et al., 2014](#)). Care should be taken to adjust salinity levels gradually over a period of several days to avoid osmotic shock. Aeration to each tank is often provided by means of an air stone or filter. The physiological temperature range of sticklebacks is 0–34.6°C ([Jordan and Garside, 1972](#); [Wootton, 1984b](#)); fish in our laboratories are typically maintained between 10 and 20°C, 15–18°C being optimal (e.g., [Cresko et al., 2004](#); [Barber, 2005](#); [Scharsack and Kalbe, 2014](#); [Kalbe et al., 2016](#)). Lower (5–7°C) and warmer (18–20°C) temperatures are often used to induce a winter- or summer-like state ([Bakker and Milinski, 1991](#); [Barber and Arnott, 2000](#); [Katsiadaki et al., 2002b](#); [Kalbe and Kurtz, 2006](#); [Hopkins et al., 2011](#); [Eizaguirre et al., 2012b](#)). Fish exposed to lower temperatures display growth rates that can be up to 60% slower ([Lefébure et al., 2011](#)), whereas those at temperatures above 20°C are subject to higher stochastic mortality. Sticklebacks are typically kept on a summer 14–16 h light: 8–10 h dark cycle (e.g., [Barber, 2005](#); [MacNab and Barber, 2012](#); [Scharsack and Kalbe, 2014](#)), which is altered to induce breeding (see [Section 2.4](#)).

Adult sticklebacks are most commonly fed on live, frozen or freeze-dried bloodworm (larvae of the nonbiting midge in the Family Chironomidae), *Tubifex* spp. (also commercially referred to as bloodworm) or *Daphnia* spp.

The preferred laboratory food is frozen bloodworm, which is easily stored and the most nutrient dense (Wouters et al., 2001), but should be defrosted and rinsed in a strainer before use to maintain water quality. Due to dietary conservatism (Thomas et al., 2010), wild fish prefer live food and may not feed immediately after capture but will begin eating defrosted bloodworm after 48 h. Commercial flake food can be used to supplement the diet, particularly if used during fish rearing (e.g., Katsiadaki et al., 2002a). Optimal diets for stickleback fry are outlined in Table 1. Precautions should be taken with live food that may contain parasites (e.g., copepods are the intermediate host for *S. solidus* and *C. lacustris*), although laboratory culture and gamma irradiated food will remove many of these risks. For experimental protocols, sticklebacks can be isolated in tanks at 1 fish/L, with 90% water changes at least every 48 h to prevent increased ammonia and nitrite levels (e.g., de Roij et al., 2011). Chemical cleaning products, particularly those containing chlorine, should be avoided or chosen carefully as they may impact parasite infections and fish health (Brungs, 1973; Finlay, 1978).

## 2.4 Breeding sticklebacks in vivo and in vitro

Breeding sticklebacks has a major advantage in that it can produce naïve fish that are free from macroparasite infections, mitigating the risks associated with uncontrolled infections; however, it is time-consuming and resource demanding. Females carrying eggs are identifiable by their swollen abdomens, sharply angled in the region of the cloaca, sometimes with a single egg protruding from the cloaca. Male stickleback breeding condition

**Table 1** Laboratory diet for three-spined stickleback (*Gasterosteus aculeatus*) fry  
**Time/size (standard length (SL)) Posthatching Food**

1–7 days	Infusoria (microbiota bloom), place handful of hay in 100 L water, leave for c. 2 weeks, check for protozoa before feeding to fish Flake food (100 µm dia.)
2 days–<2 cm SL	Brine shrimp ( <i>Artemia</i> ) (live, frozen or dried), ensure any egg shells removed, which can kill fish Flake food (200–300 µm)
>2 cm onwards	Bloodworm (live or frozen), slice for small fish <i>Daphnia</i> spp. (live or frozen) <i>Tubifex</i> spp. (live or frozen) Flake food (crushed standard aquarium flake or pellet)

is apparent when the eye sclera is blue and the jaw and abdomen are bright orange-red (Wootton, 1984c).

Photoperiod is considered an important stimulus in stickleback breeding, although this is dependent on the latitudinal origin of each fish population (Yeates-Burghart et al., 2009). Sticklebacks are typically exposed to a winter light cycle (8 h light: 16 h dark) for 2–3 months, before the length of daylight is increased to a summer light cycle (15–16 h light: 7–8 h dark) (Wootton, 1976; Bakker and Milinski, 1991; Barber and Arnott, 2000; Katsiadaki et al., 2002b; Kalbe and Kurtz, 2006; Hopkins et al., 2011), although Wootton (1984c) describes additional light cycles to induce reproduction. Temperature is also a major factor in inducing breeding condition (Borg, 1982; Sokołowska and Kulczykowska, 2009). We suggest a summer light cycle (see above) and a temperature of 18–20°C to be the most conducive for bringing fish into breeding condition. For both in vivo and in vitro breeding in the laboratory, a male and low density of females can be initially separated by sex in a tank divided with a mesh net, thus allowing reciprocal visual and chemical stimulation without direct contact. If males and females are housed in the same tank for in vitro breeding, the most gravid individuals are selected for fertilization and/or any males that become aggressive separated or euthanized for fertilization. Alternatively, a female enclosed in a water filled transparent container can be placed into a tank containing males twice daily for approximately 30 min (e.g., Barber and Arnott, 2000). The fish should be fed at least 2–3 times a day on bloodworm; unrestricted feeding will also allow the sticklebacks to compensate for infection (Barber et al., 2008). Extra care should be taken to clean these tanks regularly, as a result of extra food waste and faeces.

Breeding in vivo is a common practice that does not require euthanasia of fish: eggs and fry are often raised in hatcheries to inhibit parasite transmission (e.g., Aeschlimann et al., 2003; Frommen and Bakker, 2006; Kalbe and Kurtz, 2006; Kim and Velando, 2015). All aquaria should be equipped with environmental enrichment, such as gravel, rocks and pipes or plant pots for refugia. Males must be provided with a submerged Petri dish containing aquarium-grade sand or gravel and 50–100 cotton threads (5 cm long), which they use for nest building (e.g., Kalbe and Kurtz, 2006; Little et al., 2008; Hopkins et al., 2011; Morrell et al., 2012). Alternatively, pondweed and other natural nest building material can be provided (see Jakobsson et al., 1999; Katsiadaki et al., 2002b; Östlund-Nilsson and Holmlund, 2003), but this may introduce unwanted pathogens or plant growth into the tank. Once the nest is built, once or twice a day the most egg bound

female is introduced into the male tank for 30 min; if breeding does not occur within this period, it is unlikely to do so. Stickleback courtship goes through a series of stages (see [Wootton, 1984c](#); [Östlund-Nilsson et al., 2006](#)), then after the female has laid eggs she will swim out of the nest and the male will immediately enter, fertilize the eggs and proceed to chase away the female. At this stage, the female is removed from the tank, and the male left to raise the clutch of eggs until they hatch or the eggs are removed into a hatchery (e.g., [Barber and Arnott, 2000](#); [Kalbe and Kurtz, 2006](#); [Pike et al., 2009](#)). The use of a hatchery reduces the likelihood of pathogen transmission between the parent and offspring. The male may be used again for breeding by supplying it with more nest building material allowing generation of half-siblings.

For in vitro breeding, the female is stripped of eggs, typically using a gloved hand dipped in Stress Coat (API Fishcare), by gently squeezing the abdomen of a gravid female, moving fingers posteriorly from the pectoral girdle to the cloaca, and allowing the eggs to be collected in a 25 mm sterile Petri dish. Hanks' solution without phenol red (Hank' balanced salt solution, HBSS) may be added to the Petri dish to irrigate the eggs, but this can reduce fertilization rates (see [Table 2](#)). The eggs are released easily if the female is fully gravid, if not, the female should be replaced for a further 24 h to prevent damage by excessive force. The released eggs should form a clump if fully developed, if the egg mass dissociates then they should be discarded. Using an approved euthanization procedure (see [Section 2.1](#)), sperm is collected from a male in breeding condition. An incision is made from the pelvic girdle cutting posteriorly, or at the anus cutting anteriorly, and a second incision just behind the operculum, pulling the flap off tissue back to expose the gut. An incision in the vas deferens is then made to remove the testes ([Fig. 1](#)), which should be placed in sterile HBSS solution.

Sperm may be stored by shredding the testes into multiple pieces using forceps, releasing the sperm into a small dish of HBSS or adjusted Ginsburg's ringer solution and transferring it to an Eppendorf microtube containing HBSS. The sperm can then be stored at 4°C for 2–3 days with HBSS or 2 weeks in Ginsburg's solution if it is refreshed after 7 days (see [Schluter, 2016](#) for Ginsburg's). Large testes can be cut into two to three sections using a sterile blade and the egg mass divided using artists' fine paint brushes to perform multiple fertilizations and produce half-siblings ([Barber and Arnott, 2000](#)). Similarly, sperm from different males can be combined for sperm competition assays ([Kaufmann et al., 2015](#); [Mehlis et al., 2015](#)). Fertilizations are carried out by stirring the shredded testes around the egg mass or adding a

**Table 2** Husbandry and parasite culture recipes for three-spined stickleback (*Gasterosteus aculeatus*)

Name	Use	Solvent	Recipes
0.02% MS222	Fish anaesthesia	Dechlorinated buffered water	20 mg/L, make fresh when required
Hanks' stock — without phenol red or sodium bicarbonate	in vitro breeding	Distilled water	9.7 g/L of Hanks' power without phenol red or sodium bicarbonate
Ginsburg's ringer solution	—	—	900 mL ddH <sub>2</sub> O, 6.6 g NaCl, 0.25 g KCl, 0.3 g CaCl <sub>2</sub> . Add 0.2 g NaHCO <sub>3</sub> last. Make up to 1 L and autoclave
Adjusted Ginsburg's ringer solution	Sperm storage	—	49.5 mL of Ginsburg's ringer solution 0.25 mL antimycotic (×100) 0.25 mL gentamycin (50 mg/mL)
Sodium bicarbonate	in vitro breeding	Distilled water	0.35 g sodium bicarbonate in 10 mL
Hanks' without phenol red (HBSS)	in vitro breeding	—	9.9 mL hank's stock And 0.1 mL sodium bicarbonate
Hatchery water	Breeding	Dechlorinated water	0.001–0.005 g/L methylene blue And 5–8 ppt (0.5%–0.8%) aquarium or marine salt
PDA	<i>Saprolegnia parasitica</i> culture	Distilled water	39 g/L, microwaved into solution, autoclaved, pour into Petri dishes.
Pea broth	<i>S. parasitica</i> culture	Distilled water	125 g garden peas/litre, autoclaved, strained through muslin to remove peas, volume brought up to 1 L, reautoclaved.

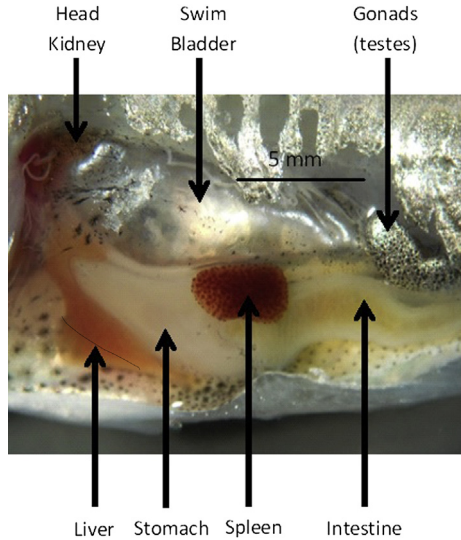
(Continued)

**Table 2** Husbandry and parasite culture recipes for three-spined stickleback (*Gasterosteus aculeatus*)—cont'd

Name	Use	Solvent	Recipes
<i>Schistocephalus solidus</i> culture media	<i>S. solidus</i> culture	—	250 mL minimum essential medium with Earle's salts and l-glutamine, 25 mM HEPES-buffer, 1 g penicillin/streptomycin 6.5 g d-glucose, buffered to pH 7.5 with sodium hydroxide
Spirulina feed <sup>a</sup>	Feed for copepods and <i>Daphnia</i> spp.	Dechlorinated water	14 g of baker's yeast and 25 g of Spirulina to 250 mL of dechlorinated water; shake well and then add a further 250 mL of dechlorinated water. This mixture will keep for several months at 4°C; shake before use.

*PDA*, potato dextrose agar.

<sup>a</sup>*Chlorella*, which has a smaller cell size, may also be used for species with small feeding parts.

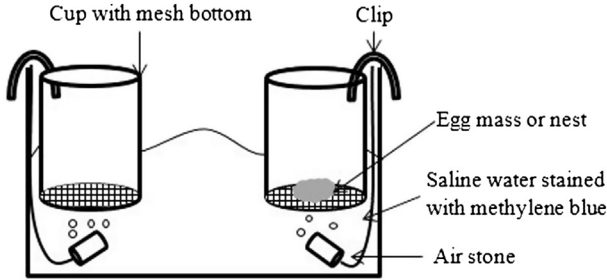


**Figure 1** Body cavity of partially dissected three-spined stickleback showing major internal organs.

portion of the stored sperm; the testes are then removed after a few minutes replacing the lid of the Petri dish. Testes may also be macerated in 300  $\mu\text{L}$  of HBSS and 50  $\mu\text{L}$  added to a 'dry' Petri dish containing eggs for fertilization; maceration can be conducted using a 40  $\mu\text{m}$  cell strainer to avoid contamination with the tissue (Kaufmann et al., 2014). After 30 min at 15°C, the eggs can be checked for successful fertilization, as indicated by separation of the inner and outer membranes, using a low power microscope ( $\times 10$ –60). Cell division should begin within 45–60 min, after which the egg mass is transferred to a hatchery (described below). Breeding in vitro is more reliable than in vivo breeding, requiring less time, and allows generation of maternal half-siblings (e.g., Barber and Arnott, 2000; Pike et al., 2009; de Roij et al., 2011; MacNab and Barber, 2012).

## 2.5 Hatchery

For the hatchery, a small tank is used (20–30  $\times$  40–50  $\times$  10–20 cm deep) containing hatchery water (Table 2), which inhibits bacterial, fungal and oomycete growth, particularly *Saprolegnia declina* (e.g., Barber and Arnott, 2000; Pike et al., 2009). Methylene blue fades over time and should be replenished until the water is again a pale blue. Malachite green, at a concentration of 0.1 ppm, may be used as an alternative preventative measure



**Figure 2** Hatchery for three-spined sticklebacks (*Gasterosteus aculeatus*) (<sup>1</sup>see [Table 1](#)).

(e.g., [Kalbe and Kurtz, 2006](#)). Hatcheries should be cleaned and remade every 2–3 weeks to reduce infection risk. Newly fertilized eggs derived from in vivo or in vitro breeding can be placed in the hatchery within plastic cups suspended from the edge of the tank with the rims out of the water ([Fig. 2](#)). The bottom of each cup is replaced with a fine mesh (0.5 mm) so that the eggs are suspended with sufficient water circulation. The mesh can be sandwiched between two cups or attached to a cup with aquarium silicone sealant. Air stones positioned under the cups provide oxygen and water circulation, but fine streams of bubbles that cause the egg mass to float and dry out must be avoided. Eggs will hatch in 7–8 days at 15°C, after which the cups are transferred and suspended from the edge of a standard 100 L tank containing a low salt concentration and methylene blue to inhibit infection of the fry (see [Table 2](#)). If eggs become infected with *S. declina*, the infected egg batch is removed, and all remaining eggs in the hatchery can be treated with malachite green (see low concentration bath; [Section 4](#)) (e.g., [Barber and Arnott, 2000](#)). Newly hatched fry fall through the mesh or can be tilted out of the hatching cups. The fry initially sink to the tank bottom where they remain for 1–3 days before establishing neutral buoyancy and they will then shoal in tank corners or around environmental enrichment. To prevent young fry being drawn into tank filters, they should be covered in a mesh or sponge and run at the lowest setting, or turned off entirely until 1–2 weeks posthatching. Newly emerged fry are fed as indicated in [Table 2](#) (e.g., [Barber, 2005](#); [Kalbe and Kurtz, 2006](#); [de Roij et al., 2011](#); [Schluter, 2016](#)).



### 3. COMMON STICKLEBACK PARASITE CULTURES

Here we provide updated culture methods for the parasites most commonly used in stickleback research that cover a broad range of phyla.

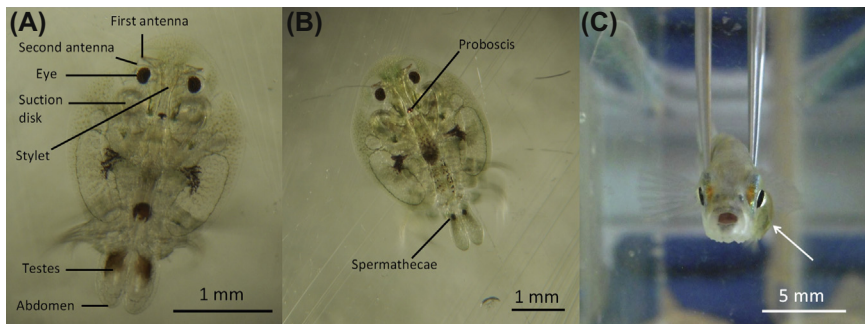


Although not covered here, we recommend [Labauve and Wargo \(2012\)](#) for information on *Pseudomonas aeruginosa* culture and [Nielsen and Buchmann \(2000\)](#) for *Ichthyophthirius multifiliis* culture.

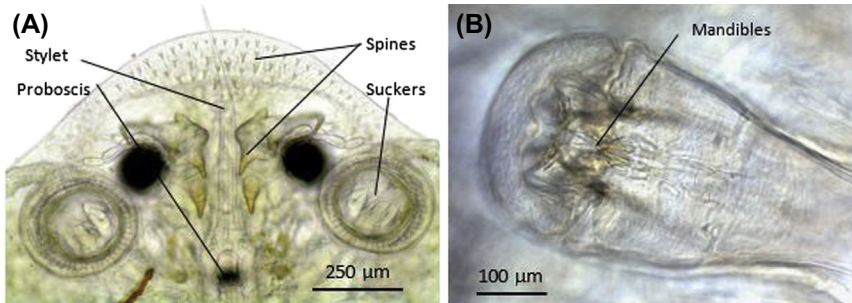
### 3.1 *Argulus foliaceus*

#### 3.1.1 Introduction

*Argulus foliaceus* (Linnaeus, 1758) is an ectoparasitic crustacean of the subclass Branchiura ([Fig. 3A–C](#)). It is a generalist parasite with a widespread distribution across much of Europe and is recorded on most freshwater fishes including the following: common carp (*Cyprinus carpio*), bream (*Abramis brama*), brown trout (*Salmo trutta*), pike (*Esox lucius*), rainbow trout (*Oncorhynchus mykiss*) and roach (*Rutilus rutilus*) in addition to sticklebacks (*Gasterosteus* spp.) (see [Bower-Shore, 1940](#)). According to [Kearn \(2004\)](#), *A. foliaceus* may parasitize any freshwater British fish species. At high infection intensities, major fish stock losses have resulted in the closure of some fisheries ([Northcott et al., 1997](#); [Gault et al., 2002](#)). When attaching to the host *A. foliaceus* makes use of circular sucking disks (see [Figs. 3 and 4](#)), with contraction of disk muscles resulting in adhesion ([Møller et al., 2008](#)). Alternate relaxation and contraction of these two disks allows the parasite to move around the host's surface. Further support is provided by a series of spines on the underside and edges of the carapace ([Fig. 4A](#)). Individual *A. foliaceus* have two compound eyes for vision alongside olfaction and mechanoreceptors used for ambush detection of the host in light conditions ([Mikheev et al., 2000](#)). This behaviour switches in the dark to a 'cruising search strategy' accompanied by increased swimming speed,



**Figure 3** *Argulus foliaceus*. (A) Male 3–5 mm in length, with visible brown testes on the abdomen. (B) Female 5–7 mm in length, with small brown spots that are the spermathecae. (C) Three-spined stickleback (*Gasterosteus aculeatus*) infected with an adult female *A. foliaceus* (arrow).



**Figure 4** *Argulus foliaceus*. (A) Ventral aspect of the carapace with attachment organs and stylet. (B) Proboscis and mouth with serrated mandibles.

allowing the parasite to cover an area 3–4 times greater (Mikheev et al., 2000). Argulids feed using a stylet (Fig. 4A) and proboscis (Fig. 4B), the latter possessing serrated mandibles surrounding the mouth. During feeding, the spinelike stylet is inserted into the host's skin. Whilst the role of the stylet is still unclear, it is thought to involve injection of cytolytic substances that aid breakdown of tissues (Hoffman, 1977; Walker et al., 2011; Møller, 2012). This action with the rasping mouthparts and grazing behaviour of the parasite can inflict considerable damage to the skin of infected fish, particularly during heavy infection. Partly because of its feeding mechanism, *A. foliaceus* may act as a vector for viruses, bacteria and flagellates, including Spring Viremia Carp Virus (Ahne, 1985; Ahne et al., 2002). Depending on fish species, argulids will detach from their host and spend some time in the water column (Mikheev et al., 2015).

Egg laying of argulids is seasonal in the wild, being most active between July and August, but can occur all year round in the laboratory (Pasternak et al., 2000; Harrison et al., 2006). The first life stage is the nauplius, which depending on *Argulus* spp., develops to the metanauplius or first preadult stage prior to hatching (some authors refer to these stages as a 'copepodids' because of the historical inclusion of the *Argulus* genus in the Copepoda subclass). After hatching, seven preadult stages occur before adulthood (Hoffman, 1977). Males are generally smaller than females and both moult frequently once sexually mature. Once adult, sexes can be easily distinguished through examination of the abdominal lobes (Fryer, 1982).

### 3.1.2 Source, culture and infection

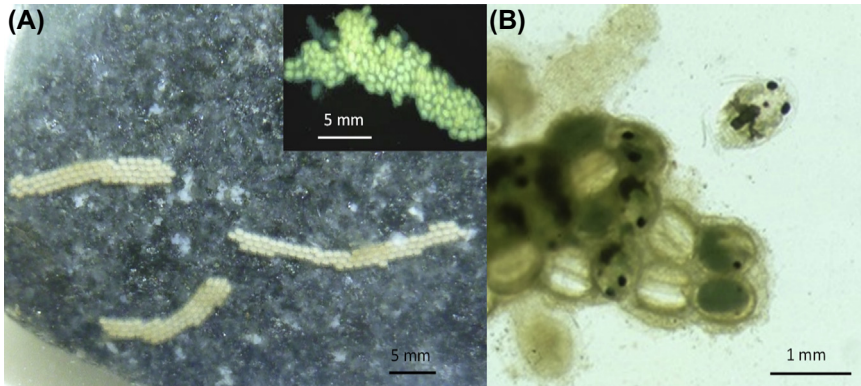
All life stages of *A. foliaceus* can be maintained in the laboratory; although the methodology outlined below refers specifically to this species, it

probably applies to most *Argulus* species (e.g., *Argulus coregoni* see Hakalahti et al., 2004).

As a generalist parasite *A. foliaceus* may be sampled from numerous freshwater fish species, although carp are a good source in the United Kingdom. Individual lice should be sexed, males have a larger and darker region defining the testes (Fig. 3A), while the abdominal lobes of females possess small black spermathecae. In gravid females, the pale eggs (Fig. 3B) may also be visible within the ovary running along the underside of the parasite. Although adult female *A. foliaceus* are generally too large for sticklebacks to eat (see Fig. 3C), the swimming style makes them vulnerable to predation and fish will readily attack detached individuals. Therefore, abundant refugia (plant pots, fake or real weed, netting and/or plastic pipes) are necessary for shelter. Reduced lighting can also help reduce predation of parasites and may aid egg laying.

Infections with all *A. foliaceus* life stages can be performed by anaesthetizing a stickleback in 0.02% MS222, transferring the fish to 100 mL of dechlorinated water and adding argulids. Alternatively, argulids can be allowed to infect fish naturally (e.g., Ruane et al., 1999; Forlenza et al., 2008; Kar et al., 2015); although we suggest placing the fish in the dark and adding refugia to reduce predation, which works well with metanauplii and preadults. To improve attachment, argulids can be starved for up to 24 h before exposure to a potential host.

For *A. foliaceus* breeding, infected fish are kept at 15–25°C (optimally 20°C), with one adult male and female *Argulus* per host; temperatures below 8–10°C cause egg laying to cease (Hoffman, 1977; Pasternak et al., 2000; Gault et al., 2002; Harrison et al., 2006; Taylor et al., 2009). Mating occurs on the host and then the female detaches to lay eggs, often in shaded areas on a hard substrate, such as the underside of rocks, stones or wood (Pasternak et al., 2000; Taylor et al., 2009; Sahoo et al., 2013). The eggs are laid in two to four rows with between 20 and 300 eggs per string (Fig. 5A). Each egg is 0.3–0.6 mm in length and coated in cement, which anchors it firmly to the substrate. Tanks should be regularly checked for eggs to prevent unwanted infections when nauplii hatch. Eggs laid directly on the walls or bottom of the tank can be collected, but it is easier to transfer the infected fish to a new 1 L pot, as the eggs can be damaged even if carefully removed using a cell scraper. Alternatively, fertilized female argulids can be removed from the fish when they develop large ovaries and placed into a Petri dish (90 mm dia.) containing dechlorinated water for 24 h allowing them to lay their eggs.



**Figure 5** *Argulus foliaceus*. (A) Egg strings laid on a rock, three egg strings from a single adult female. Insert, close up of an egg string. (B) Mature eggs and hatched metanauplius.

Egg hatching time varies with parasite species and temperature (Table 3). *Argulus* spp. eggs can be stored at 4–5°C, which arrests embryo development, causing the nauplii to go into an ‘over winter’ state (Shimura, 1983; Gault et al., 2002; Harrison et al., 2006; Taylor et al., 2009). Photoperiod may also alter hatching in *Argulus siamensis* (see Bai, 1981) but has not been fully explored in other species. As a result of the temperature range and potential photoperiod required for hatching, a domestic fridge (4°C) provides ideal storage conditions. It is unknown how long eggs can be maintained in an arrested state, but successful hatching of eggs up to 4 months old has been achieved in our Cardiff aquarium. To induce hatching, eggs are transferred to a 1 L container of freshwater with aeration (Table 3). Egg development can be monitored by examining the egg string under a low power microscope ( $\times 10$ – $40$ ), the conspicuous eye spots of the developing metanauplii are easily seen, along with increased movement prior to hatching. Once hatched the metanauplii (Fig. 5B) can survive off the host for 2–3 days. The metanauplii and preadults can be kept on sticklebacks (maximum of 5) or carp (20 maximum on a 20 g fish). Infected fish should be maintained at 15–20°C; warmer temperatures will not only increase *A. foliaceus* growth rate but also stochastic fish mortality. To reduce pathology when argulids reach the later preadult and adult stages, all but two argulids should be removed, by gently encouraging them off the fish with a pipette tip or blunt forceps, and then excess detached argulids can be used to infect other fish.

**Table 3** *Argulus* species and their time until hatching at various temperatures and photoperiods

Species	Temperature (°C)	Hatching time (days)	Lighting (Light:Dark)	References
<i>Argulus americanus</i>	22	16	Unknown	Hoffman (1977)
	18	18	Unknown	Hoffman (1977)
<i>Argulus catostomi</i>	22	35	Unknown	Hoffman (1977)
<i>Argulus coregoni</i>	21	30	Unknown	Hakalahti et al. (2004)
<i>Argulus foliaceus</i>	Natural	25–51	Natural	Pasternak et al. (2000)
	18–23		summer	
	21	14–30	16:8	Cardiff University cultures
	26	8	Unknown	Fryer (1982)
	Unknown	30–35	Unknown	Bower-Shore (1940)
<i>Argulus japonicus</i>	30	12	Unknown	Hoffman (1977)
	15	60	Unknown	Hoffman (1977)
	15	61	Unknown	Shafir and As (1986)
	35	10	Unknown	Shafir and As (1986)
<i>Argulus lepidostei</i>	22	10	Unknown	Hoffman (1977)
<i>Argulus siamensis</i>	0	Nil	Unknown	Sahoo et al. (2013)
	4	Nil	Unknown	Sahoo et al. (2013)
	15	Nil	Unknown	Sahoo et al. (2013)
	28	15	Unknown	Sahoo et al. (2013)
	32	10	Unknown	Sahoo et al. (2013)
	Unknown <sup>a</sup>	45	0:24	Bai (1981)
	Unknown <sup>a</sup>	38	11:13 (1750 lux)	Bai (1981)
	Unknown <sup>a</sup>	29	11:13 (100,000 lux)	Bai (1981)
	Unknown <sup>a</sup>	24	24:0 (69,000 lux)	Bai (1981)

<sup>a</sup>Although not specifically mentioned it is assumed temperature is the same in all cases.

The intensity of *Argulus* spp. is simply determined by counting the number present on the fish (e.g., Saurabh et al., 2010; Kar et al., 2015), sometimes adjusted for fish mass (Ruane et al., 1999). Given the range of sizes that this parasite can attain at different life cycle stages, measuring mass or size of the parasite is also beneficial. The size of the lesions (characterized by thinning of the epithelium, oedema and haemorrhaging) produced by

*Argulus* spp. and behavioural lethargy of the fish may be useful measures of infection pathology (see Walker et al., 2004).

### 3.1.3 Immunology

Argulids induce a consistent innate response with the addition of an adaptive response approximately 7–10 days postinfection. The immunology of *A. foliaceus* infection has been little studied; there are, however, some closely related species for which the host immune phenotype has been documented. The majority of these studies have focused on sea lice of the genus *Lepeophtheirus* which, despite belonging to a different subclass of the Copepoda, exhibit a similar life cycle to argulids. Typically, these studies have found constant increases in expression of *il-1 $\beta$* , *tnf- $\alpha$*  and major histocompatibility complex (MHC) II throughout the course of the experiment (9–40 days postinfection) (Fast et al., 2006a,b). Over a 6 day period *Argulus japonicus*, which infects common carp, produces a similar response to that of sea lice including upregulation of *tnf- $\alpha$*  and the chemokines *CXC $\alpha$*  and *CXCR1* in the skin (Forlenza et al., 2008). Infections of rohu (*Labeo rohita*) with *A. siamensis* also demonstrate increased expression in the skin, particularly of innate responses, including *tnf- $\alpha$*  (although later at 15 days postinfection), lysozyme and natural-killer cell-enhancing factor (Saurabh et al., 2011; Kar et al., 2015). Kar et al. (2015) demonstrated a further role for adaptive immunity as IgM and  $\beta_2$ M also appear to be upregulated in the head kidney, although not consistently, from 0.5 to 15 days postinfection. Of further interest is the downregulation of TLR22 early in infection, complement and  $\alpha_2$ M more or less consistently across experiments, demonstrating that *A. siamensis* has the ability to modulate the immune system and other biological responses (Saurabh et al., 2010, 2011; Shailesh and Sahoo, 2010; Kar et al., 2015). Downregulation of the coagulation inhibitor  $\alpha_2$ M suggests a strategy that allows the argulid to inhibit clotting, making feeding easier. A key problem interpreting these studies is the harvesting of different organs and tissues, (skin, head kidney, kidney, serum and/or liver) for extraction of genetic material or immunological assays. While harvesting of the skin was performed in the majority of these studies, the range of other tissues taken and differences in methodology makes correlations between studies difficult to assess.

## 3.2 *Camallanus lacustris*

### 3.2.1 Introduction

The nematode *C. lacustris* (Zoega, 1776) is a parasite of predatory fish, primarily perch but also pike, eels, and sticklebacks as a paratenic

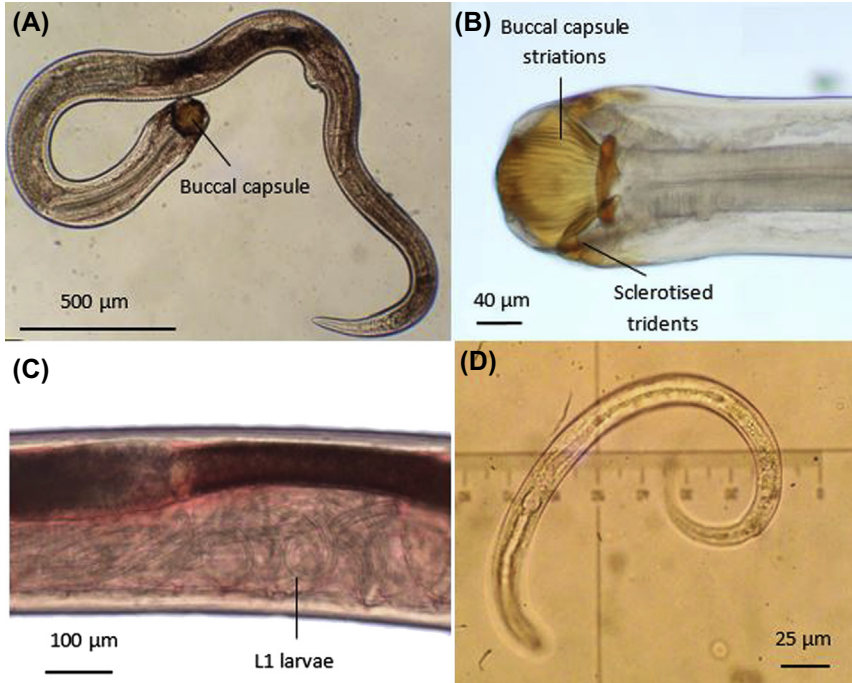


host (Kalbe et al., 2002; Krobbach et al., 2007). As adults, camallanids attach to the blind sacs and anterior intestine causing an inflammatory reaction (Meguid and Eure, 1996) and exhibit a seasonally reproductive life cycle with first stage larvae (L1s) only produced during the summer months (Skorping, 1980; Nie and Kennedy, 1991). Gravid female nematodes may contain several thousand active L1 larvae, which are free moving, visibly coiling and uncoiling in the parental uterus. These larvae are shed from the vulva into the environment within fish faeces. Free-living L1s are viable in water for 12 days at 22°C and 80 days at 7°C (Campana-Rouget, 1961). They are ingested by a range of Cyclopidae copepods that act as intermediate hosts in which the larvae develop into L2s after 3 days at 25°C or 5 days at 20°C. For *C. lacustris* the second moult into the L3 stage occurs after 6 days at 25°C or 10–12 days at 20°C (Campana-Rouget, 1961). This is similar for other species within the genus, with *Camallanus oxycephalus* reaching the L3 nine days postinfection at 25°C (Stromberg and Crites, 1974, 1975). Only at the L3 stage, coiled in the haemocoel of the copepod after migration from the digestive tract (De, 1999), is the camallanid larva infective to the definitive host on ingestion of the intermediate host (Moravec, 1969). These L3 larvae are relatively large within the haemocoel, and at high intensities (>3 worms per copepod) copepod survival is reduced in a sex-dependant manner (Benesh, 2011); smaller copepod species likely suffer reduced survival at lower infection intensities. Infected copepods are at a greater risk of predation on attainment of *C. lacustris* infectivity (Wedekind and Milinski, 1996; Hafer and Milinski, 2016). Direct transmission from the copepod to the definitive host may occur by ingestion (Chubb, 1982), although more likely the copepods are first eaten by planktivorous fish, such as sticklebacks. When these paratenic hosts are predated, the camallanid reaches adulthood, producing in utero L1s within 69 days (Chubb, 1982).

### 3.2.2 Source, culture and infection

Gravid *C. lacustris* adults can be collected from the intestinal tract of perch (*Perca fluviatilis*) during summer in the United Kingdom; although Salmonidae, Gadidae, Esocidae and Siluridae may also act as hosts (Moravec, 1971). Parasites attach between the intestinal folds and may be easily removed by means of forceps. *C. lacustris* may be distinguished from other intestinal nematodes by the presence of a scallop-shaped buccal capsule and sclerotised tridents (Moravec, 2013) (Fig. 6A and B).

The characteristic red adult *Camallanus* worms (Fig. 6A) survive for 1–2 weeks in vitro at 4°C in 50% phosphate buffered saline (PBS).



**Figure 6** *Camallanus lacustris*. (A) Adult. (B) L3 buccal capsule, striations running laterally along the partially sclerotized buccal capsule denote the L3. (C) Adult carrying L1s. (D) 'Free-swimming' L1 larvae.

L1s can be removed from the adult worm (Fig. 6C), held in a watch glass with 50% PBS, by puncturing the uterus with watchmakers forceps and allowing uterine contractions to force out the larvae. The L1s are visible using a dissection microscope ( $\times 10$ – $60$ ) and are conspicuous due to their high motility (Fig. 6D), which is likely an adaptation to increase predation. L1s survive for a minimum of 2–3 days in vitro at 4°C in tank water. They can be transferred using a *Caenorhabditis elegans* worm pick or P2 pipette to a nontreated culture dish or watch glass with lid containing copepods from the Family Cyclopidae. For larger infections 100 copepods are kept in beakers (250–500 mL) with 500 L1 larvae for  $\sim 10$  days, changing the water 3 days postinfection. Larvae within the copepod should be counted before infection (see below). Previous experiments have used many copepod species as hosts for camallanids, including *Mesocyclops*, *Thermocyclops* (see Bashirullah and Ahmed, 1976), *Macrocyclus* (see Krobbach et al., 2007), *Acanthocyclops* (see Chubb, 1982) and *Cyclops* spp. The larger



of the *Macrocyclops* spp. have been used as a host for up to six larvae of *C. lacustris* (see Krobbach et al., 2007). Smaller copepod species may be less able to survive such a high infection. Female copepods are also subject to increased mortality at high infection intensities in comparison to males (Benesh, 2011).

*Macrocyclops* spp. should be fed on *Artemia* spp. (see Krobbach et al., 2007), although species such as *Cyclops strenuus* survive well on a daily mixture of *Spirulina* and yeast (approximately 1 mL per 10 L tank of copepods; see Table 2). For copepods kept in culture dishes, half their water should be removed and replaced with a dilute feed mixture (100 µL in 100 mL) every 2–3 days.

Development of *C. lacustris* into the L3 takes approximately 2 weeks at 15–18°C on a 16:8 h light: dark cycle. Infectivity of the L3 can be checked using a recently deceased host, squashing the copepod onto a glass slide with a coverslip and a drop of water and viewing under a compound microscope ( $\times 40$ ). Live copepods may also be checked individually by putting them on a slide with as little water as possible and rapidly counting the larvae under a compound microscope; this also allows dose determination (e.g., Eizaguirre et al., 2012b; Lenz et al., 2013). Striations on the buccal capsule are characteristic of the L3 (Fig. 6A and B) but may only be visible through microscopic examination of squash preparations of the whole copepod host; the buccal capsule itself is apparent first in the L2 larvae. Prior to infection, sticklebacks should be acclimated to feeding on copepods. To infect sticklebacks with *C. lacustris*, the fish are starved for 24 h and then infected copepods are released into a crystallizing dish containing the intended host. The optimal number of camallanids to feed each stickleback is six, which will give an infection rate of 40%–50% (Krobbach et al., 2007) with *C. lacustris* intensity measured by the number of individuals in the host's gut (e.g., Krobbach et al., 2007; Lenz et al., 2013).

### 3.2.3 Immunology

The cellular immunological responses of the stickleback to *C. lacustris* infection are largely unknown. However, a role has been described for the MHC, pivotal for activation and control of the adaptive immune response by presenting parasite- and self-antigen to T-cells. Eizaguirre et al. (2012b) identified a link between *C. lacustris* infection and a shift in adaptive MHC allele frequency with selection for specific haplotypes conferring resistance in the offspring of parents exposed to the infection. Such a rapid change in frequency highlights the important role of the adaptive immune response in this infection system. Granulocyte/lymphocytes

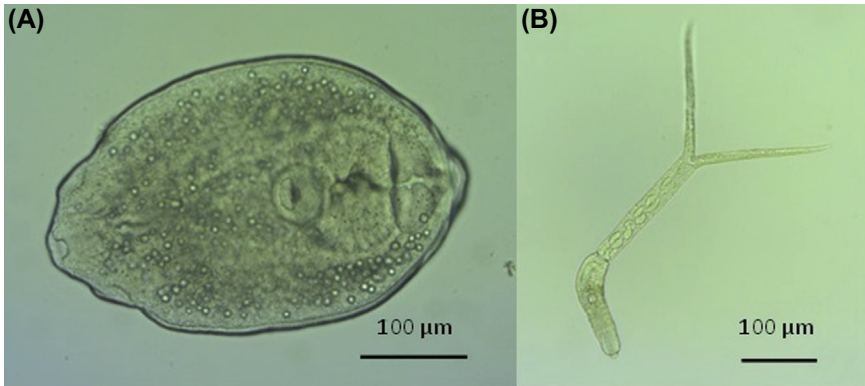
ratios were elevated during high intensity parasite infections, but with no elevation in respiratory burst and leucocyte responses (Krobbach et al., 2007).

Within vertebrates the mucosal-associated lymphoid tissues direct immune responses at mucosal sites including the gut. The teleost gut-associated lymphoid tissue contains two predominate immune cell populations: lamina propria leukocytes (including granulocytes, macrophages, lymphocytes and plasma cells) and intraepithelial lymphocytes (T and B-cells found among epithelial cells) (see Rombout et al., 2014; Parra et al., 2015). In trout the T-cell receptor  $\beta$  was found to be relatively diverse and polyclonal, in comparison to the restricted diversity observed in mammals, an attribute possibly linked to the lack of Peyer's patches and mesenteric lymph nodes in fish (Bernard et al., 2006). Additionally, while both IgM and IgT are found within the gut-associated lymphoid tissues IgT + B-cells make up the predominate cellular repertoire, particularly in response to intestinal parasites (Zhang et al., 2010). Given the high degree of conservation in the vertebrate immune system, it is possible that a gastrointestinal nematode infection in teleosts will, as in mammals, stimulate a response involving T-helper cell type 2 ( $T_H2$ ) cells. In mammals  $T_H2$  responses are characterized by increased expression of signature cytokines such as IL-4, IL-5 and IL-13 resulting in eosinophilia, mast cell activity, IgE production and mucosal changes (Jackson et al., 2009). While the teleost immune system is relatively understudied,  $T_H2$ -like cells and functional responses (involving teleost *il4/il13*) have been observed in zebrafish and salmonids (see Balla et al., 2010; Takizawa et al., 2011; Hammarén et al., 2014) and might be predicted to also occur in the stickleback.

### 3.3 *Diplostomum* Species

#### 3.3.1 Introduction

Trematodes of the genus *Diplostomum* (von Nordmann, 1832) are some of the most common parasite infections in sticklebacks (e.g., Pennycuick, 1971; Karvonen et al., 2013, 2015), especially for populations inhabiting lentic environments (Kalbe et al., 2002). Historically, three *Diplostomum* species have been frequently recorded: *Diplostomum spathaceum* (Rudolphi, 1819), *Diplostomum pseudospathaceum* (Niewiadomska, 1984) and *Diplostomum gasterostei* (Williams, 1966). Molecular approaches, however, have revealed an expanding assemblage of *Diplostomum* species complexes spanning the geographic range of sticklebacks (e.g., Locke et al., 2010; Georgieva et al., 2013; Blasco-Costa et al., 2014). Mitochondrial genomes and nuclear



**Figure 7** *Diplostomum* spp. (A) metacercaria, lineage 5 (Blasco-Costa et al., 2014) and (B) cercaria. Images courtesy of Isabel Blasco-Costa and Miroslava Soldánová, respectively.

rDNA sequences for *D. spathaceum* and *D. pseudospathaceum* (see Brabec et al., 2015) now provide tools for landscape genetic mapping of these parasites.

*Diplostomum* utilizes a complex, three-stage life cycle comprising freshwater snails (Family Lymnaeidae) as the first intermediate host, fish as second intermediate hosts and a range of piscivorous birds as definitive hosts (e.g., common gulls *Larus canus*; see Karvonen et al., 2006a). Sticklebacks obtain *Diplostomum* infections by encountering free-swimming cercariae (Fig. 7A) shed from infected snails, commonly of the genera *Lymnaea* or *Radix*. Whilst *Diplostomum* are typically described as eye flukes in the fish host, forming metacercariae (Fig. 7B) in the lens, vitreous humour, and/or retina, specific lineages may also be present in brain tissue (see Blasco-Costa et al., 2014; Faltýnková et al., 2014). Although not covered here, Rieger et al. (2013) provide details for maintaining the parasite through its complete life cycle including the intermediate and definitive hosts *Lymnaea stagnalis* and the herring gulls (*Larus argentatus*), respectively.

### 3.3.2 Source, culture and infection

If an infection of *Diplostomum* has been identified in a stickleback population, it is highly likely that *Lymnaea* or *Radix* snails from the same habitat will be infected. The prevalence of *Diplostomum*, however, varies considerably between seasons, localities and snail species (e.g., Karvonen et al., 2006b,c; Rieger et al., 2013; Faltýnková et al., 2014). To optimize *Diplostomum* collection, individual snails of larger size classes (e.g., *L. stagnalis* shell length >40 mm) should be selected during late summer/early autumn to coincide with high prevalence and fully developed cercarial infections

(Karvonen et al., 2006b). Infected snail populations can be maintained in laboratory aquaria containing continuously aerated water (dechlorinated tap or filtered from source locality), fed ad libitum on washed lettuce in controlled climate facilities (reflecting source environment or 18 h light: 6 h dark cycle, c. 15°C). Light stress is commonly used to stimulate cercarial release, by placing snails individually into beakers of water (c. 100 mL) at 10–20°C under a light source (e.g., Scharsack and Kalbe, 2014). Cercariae will be shed within 2–4 h, provided that fully developed *Diplostomum* cercarial infections are present, at a rate of 400–2400 cercariae/h depending on temperature (Lyholt and Buchmann, 1996).

Identification of cercariae released from snails is necessary since aquatic snails may harbour single or multiple infections of other trematode species. Whilst *Diplostomum* cercariae can be distinguished from other cercariae based on their morphology and resting posture (see Niewiadomska, 1986) at  $\times 100$  under a compound microscope, molecular techniques are essential to identify species and/or lineages of *Diplostomum*. Multiple lineages may be present in natural snail populations, which vary in their capacity to infect sticklebacks or other sympatric fish species (see Blasco-Costa et al., 2014; Faltýnková et al., 2014).

Sticklebacks can be infected individually in  $\sim 1$  L water containing freshly emerged cercariae; typical exposure doses range from 20 to 220 cercariae per fish (Brassard et al., 1982; Lyholt and Buchmann, 1996; Kalbe and Kurtz, 2006; Scharsack and Kalbe, 2014; Haase et al., 2016) to 5000–10,000 for other fish species (Sweeting, 1974; Rintamäki-Kinnunen et al., 2004). Whilst the parasite rapidly reaches the ocular tissues (within 24 h postinfection; Chappell et al., 1994), *D. pseudopathaceum* metacercariae establishment is best assessed after 1 week, since low numbers of early infections may be overlooked (Rauch et al., 2006). Kalbe and Kurtz (2006) have, however, demonstrated that 2-day- and 8-week-old metacercariae may be identified when sticklebacks are exposed to repeated cercarial infections. *Diplostomum* spp. infections are determined by counting the number of metacercariae in the eye tissues but this necessarily involves destructive sampling (e.g., Bortz et al., 1984; Lyholt and Buchmann, 1996; Kalbe and Kurtz, 2006; Locke et al., 2010; Scharsack and Kalbe, 2014).

### 3.3.3 Immunology

The eyes of teleosts are assumed to have the same immune privileged status of mammals (i.e., no localized immune response; Niederkorn, 2006; Sitjà-Bobadilla, 2008), thus for parasites invading the eye such as *Diplostomum*,

we assume the immune response is limited to the migratory period between epidermal penetration of the cercariae and their arrival in the eye. Given this short window of vulnerability, it is generally acknowledged that the classical adaptive response plays no role in resistance against a primary parasite infection (Rauch et al., 2006). Instead, oxidative burst and reactive oxygen species are thought to be the key components of the innate immune response against these pathogens. Head kidney lymphocyte respiratory burst activity is upregulated in fish 1.5 days postinfection but not from 5 days postinfection (Kalbe and Kurtz, 2006; Scharsack and Kalbe, 2014), while macrophages produce reactive oxygen species that are capable of killing larval *Diplostomum* (see Whyte et al., 1989). The phagocytic activity of granulocytes and monocytes has also been cited as inhibiting *Diplostomum* migration into the eye (Erasmus, 1959; Ratanarat-Brockelman, 1974). Despite this apparent bias towards the innate response against this parasite, a recent transcriptomic study identified antibody-mediated responses and increased MHC and *il-4r* expression (a gene in mammals associated with adaptive helminth resistance) in response to infection (Haase et al., 2016). Such results support the notion that the innate and adaptive immune systems cannot be considered in isolation but must be viewed as a fluid and versatile network (Magnadóttir, 2006). There is also a level of concomitant immunity as sticklebacks that receive a primary infection of *D. pseudospathaceum* acquire lower levels of metacercariae in a secondary infection in contrast to the primary infection (Scharsack and Kalbe, 2014). In addition, sonicated metacercariae injected into sticklebacks induce antibody responses capable of providing immunity to subsequent infection (Bortz et al., 1984; Whyte et al., 1987), suggesting that the adaptive response may play a role in concomitant immunity if not the primary immune response.

While the host genotype, particularly that of the MHC, is cited as a major factor in resistance and susceptibility, the parasite's genotype is also involved in determining infection outcome, with differential gene expression in different *Diplostomum* clones (Haase et al., 2014). As with MHC experiments that find homozygous individuals to be more susceptible to infection (see Wegner et al., 2003a,b), infections using a single clone of *Diplostomum* were less successful than mixed infections (Haase et al., 2014). Lake ecotype sticklebacks carry heavier and more diverse infections than their riverine ecotype counterparts (Kalbe et al., 2002; Scharsack et al., 2007a), with lake fish demonstrating a heightened level of resistance to *Diplostomum* infection (Scharsack et al., 2007a; Scharsack and Kalbe, 2014), in part due to selection within the MHC (Kalbe and Kurtz, 2006;

Eizaguirre et al., 2011). In addition, lakes typically harbour a greater diversity of snails, not only making the presence of the intermediate host more likely but also making a greater range of parasite genotypes available, which may account for some of the ecotype variation (Karvonen et al., 2012).

### 3.4 *Glugea anomala*

#### 3.4.1 Introduction

*G. anomala* (Moniez, 1887) is a microsporidian pathogen that causes white tumour-like growths, c. 1–4 mm dia., known as the xenoparasitic complex (Chatton, 1920; Lom and Dyková, 2005). This complex is formed of many polypoid host cells (Fig. 8), in which the microsporidian replicates and grows, by stimulation of hypertrophic growth of host tissue (Lom and Dyková, 2005). For *G. anomala* infecting sticklebacks, the xenoparasitic complex was renamed the ‘xenoma’ (Weissenberg, 1968). Nutrients are acquired by *G. anomala* through production of a hyposome with rhizoids that extend into the host cell cytoplasm (Lom and Dyková, 2005). Species can be positively identified via ribosomal DNA sequencing (see Cecile et al., 2000). Infection with *G. anomala* is linked to a reduction in feeding optimization (Milinski, 1984, 1985) as well as exerting a metabolic cost and increasing the host’s tendency to shoal (Ward et al., 2005).

#### 3.4.2 Source, culture and infection

There are multiple published methods for infection of fish with *G. anomala* and other microsporidians (Olson, 1976; Shaw and Kent, 1999; Kurtz et al., 2004; Lom and Dyková, 2005), including *Tetramicra brevifilum* (see Figueras et al., 1992). It is assumed that *G. anomala* is transmitted orally during cohabitation of infected and uninfected fish (Lom and Dyková, 2005). In theory



**Figure 8** A three-spined stickleback with a *Glugea anomala* xenoma (arrow).

infection can be achieved experimentally by exposing fish to a spore suspension produced from infected fish (Kurtz et al., 2004), intraperitoneal, intramuscular or intravascular injection, and anal or oral gavage (Shaw and Kent, 1999). Crustaceans, including *Artemia salina* (brine shrimp) and *Corophium spinicorne* (amphipod), may also act as intermediate hosts for *Glugea stephani* (see Olson, 1976). However, preliminary testing of several infection methods in our Cardiff laboratory, oral transmission of extracted spores in the water column, oral gavage, intramuscular injection, cohabitation of infected and uninfected fish and exposure of putative intermediate hosts (*A. salina*, *Cyclops strenuous* and *Daphnia magna* to *Glugea* spores for 48 h) to date, has not resulted in parasite transmission 90 days posttreatment, despite xenomas reportedly developing 3–4 weeks postinfection (Lom and Dyková, 2005). The intensity of *G. anomala* can be measured by the number and size of xenoma visible externally (e.g., Schmahl et al., 1990; Lom et al., 1995; Dezfuli et al., 2004; Kurtz et al., 2004), internal xenomas may occur and these can be identified during dissection (e.g., Dezfuli et al., 2004).

### 3.4.3 Immunology

To date, there is only preliminary data on the immune response to *Glugea*. There is little or no detectable host response to the microsporidian until the xenoma is fully developed. Macrophage aggregates occur around the outside of the xenoma wall with eosinophils and neutrophils being recruited to reduce the mass of spores within the xenoma (Dezfuli et al., 2004; Lom and Dyková, 2005). Intermediate levels of individual allelic diversity in the MHC class *IIB* have been linked with increased *G. anomala* resistance (Kurtz et al., 2004).

## 3.5 *Gyrodactylus* Species

### 3.5.1 Introduction

*Gyrodactylus* species are ubiquitous monogenean parasites of teleosts with over 400 described species (Harris et al., 2008). Identification of species is commonly conducted by rDNA internal transcribed spacer (ITS) region sequencing supplemented by the morphological characteristics of the marginal hooks and hamuli (Shinn et al., 2010), although mtDNA gene sequencing may also be necessary to reveal cryptic species (Xavier et al., 2015). The viviparous nature of their reproductive life cycle means that they are capable of uncontrolled infrapopulation growth that at high densities become pathogenic (e.g., Scott and Anderson, 1984; Bakke



et al., 1990), although this is limited in most species by thermally dependant host immune responses (e.g., Bakke et al., 1992; Harris et al., 1998; Lindenstrøm et al., 2004, 2006; Kania et al., 2010) and hosts may seek elevated temperatures to ‘self-medicate’ (Mohammed et al., 2016).

*Gyrodactylus salaris* (Malmberg, 1957) is of particular economic importance as it infects salmonids and has been the focus of intensive eradication schemes particularly in Norway since the 1980s (Linaker et al., 2012). As such, *G. salaris* has a published genome (Hahn et al., 2014). Studies on salmon are often costly, and their fry are particularly sensitive to stressors (Barton et al., 1986). Therefore, many studies have used model fish, including the guppy and stickleback (reviews by Cable, 2011; Barber, 2013; respectively) to assess potential ecological, pathological or immunological effects of these parasites on tropical and temperate fish species (Bakke et al., 2007). Because the parasites infect the gills, body and/or fins of the host, and most detached parasites have no swimming ability (a notable exception being *Gyrodactylus rysavji* Ergens, 1973 see El-Naggar et al., 2004), transmission typically occurs during host contact. Some parasite species, though, may drift or hang in the water column or attach to the substrate if detached from the host (Bakke et al., 1992; Soleng et al., 1999; Cable et al., 2002b), adopting a ‘sit-and-wait’ reinfection strategy. In high host density aquaculture systems, gyrodactylid infections can spread quickly with devastating consequences.

### 3.5.2 Source, culture and infection

Stickleback *Gyrodactylus* spp. may be obtained from research institutions or the wild. The two common species found infecting sticklebacks are *Gyrodactylus gasterostei* (Glaser, 1974) and *Gyrodactylus arcuatus* (Bychowsky, 1933); *Gyrodactylus alexanderi* (Mizelle & Kritsky, 1967) and *Gyrodactylus branchicus* (Malmberg, 1964) are rare, whereas other species such as *G. salaris* or *Gyrodactylus pungitii* (Malmberg, 1964) may infect the three-spined stickleback but are not specialists; for a full list see Harris et al. (2008). Using a dissection microscope with fibre optic illumination, sticklebacks can be experimentally infected by anesthetizing a donor and recipient fish in 0.02% MS222 and allowing *Gyrodactylus* worms to cross from one fish to another by overlapping the stickleback caudal fins. Infections can also be performed by removing parasites on a fin clip or scale, or gently dislodging the worms from donors using an insect pin (Buchmann and Bresciani, 1997; Buchmann and Uldal, 1997), and then bringing a



known number of parasites into close contact with a recipient fish. Alternatively, infections can be performed by cohabitation of recipient and donor fish (e.g., [Lindenstrøm et al., 2006](#); [Kania et al., 2010](#); [Ramírez et al., 2015](#)), but this results in inconsistent starting infection intensities. For controlled infections, typically one or two worms are added to the caudal fin to initiate an infection (e.g., [Cable et al., 2000](#); [van Oosterhout et al., 2003](#); [Cable and van Oosterhout, 2007](#); [de Roij et al., 2011](#); [Konijnendijk et al., 2013](#); [Smallbone et al., 2016a](#)), but up to four have been used ([Anaya-Rojas et al., 2016](#)).

To produce an isogenic culture of any *Gyrodactylus* species, fish are infected with a single gyrodactylid worm. Several fish should be infected as the *Gyrodactylus* worms may be at the natural end of their short life span. The infected fish are left for a week at 15–20°C to allow the parasite to reproduce in situ. One fish infected with an isogenic line should be transferred to a tank with at least three other fish to allow natural transmission and maintenance of the line. Fish should be kept at densities of one fish per litre for adults or one juvenile (<20 mm standard length) per 250 mL. To avoid parasite extinction, two to three tanks of the culture are often maintained with at least four fish in each, adding new naïve fish in the event of host mortality ([Schelkle et al., 2009](#)). Additionally, in order that infections do not reach their pathogenic maximum, every 2 weeks the fish should be screened to count the parasites by anaesthetizing each fish in 0.02% MS222 under a dissection microscope with fibre optic illumination. If additional tank replicates are needed, one to two fish with a total of 40 parasites can be removed from the screened tank and placed in a fresh tank with sufficient naïve fish to make the numbers up to four. If there are greater than 40 parasites per fish, the fish should be treated to prevent mortality (see [Schelkle et al., 2009](#)). Water should be changed regularly, every 48 h if unfiltered, as nitrates and nitrites can have a detrimental effect on *Gyrodactylus* survival ([Smallbone et al., 2016b](#)).

Measuring the infection intensity of some gyrodactylid species is remarkably simple given its ectoparasitic nature. It is, however, important to note that some gyrodactylid species of the three-spined stickleback, e.g., *G. arcuatus*, infect the gills and therefore cannot be counted without autopsy ([Harris, 1982](#); [Raeymaekers et al., 2008](#)). When using a species such as *G. gasterostei*, which is predominantly found on the skin and fins ([Harris, 1982](#)), the infection trajectory can be monitored noninvasively (e.g., [Buchmann and Uldal, 1997](#); [Cable et al., 2000](#); [Kania et al., 2010](#); [Raeymaekers et al., 2011](#); [Ramírez et al., 2015](#)).

### 3.5.3 Immunology

Much of the immunological work conducted on gyrodactylids has been performed on *G. salaris* infected salmon, particularly the susceptible Norwegian salmon and resistant Baltic salmon (Bakke et al., 1990; Dalgaard et al., 2003; Lindenstrøm et al., 2006; Kania et al., 2010). There are some intermediate populations (see Bakke et al., 2004), but these have not yet been studied immunologically. Like other gyrodactylids there is also considerable variation among strains (Hansen et al., 2003; van Oosterhout et al., 2006). As with other parasite systems the MHC plays an important role in *Gyrodactylus* spp. resistance (e.g., Eizaguirre et al., 2009). Specific alleles of MHC class *IIB* genes in guppies, when present in high copy numbers, afford the host a measure of protection by reducing infection intensity (Fraser and Neff, 2009; Fraser et al., 2009, 2010). Furthermore, this protection is ecotype specific; river fish tend to be more resistant to infection than lake fish, probably because they are exposed to a narrower range of parasites and therefore are able to target specific parasites (Eizaguirre et al., 2011).

Immunity to *Gyrodactylus* spp. is primarily mediated by a 'scorched-earth strategy', whereby parasites are starved of nutrients and exposed to increased expression of host complement (Buchmann, 1998; Harris et al., 1998; Kania et al., 2010). As such, resistant salmon show no increase in the mucus secretagogue *il-1 $\beta$* , while susceptible salmon show a marked increase in *il-1 $\beta$*  24 h postinfection (Lindenstrøm et al., 2006; Kania et al., 2010). Likewise rainbow trout (*O. mykiss*), exposed to primary *Gyrodactylus derjavini* infections and then a secondary infection 35 days after parasite clearance, demonstrated susceptibility in the primary infections linked with increased *il-1 $\beta$*  transcript in the skin, while resistant secondarily infected fish showed no increase in *il-1 $\beta$*  (Lindenstrøm et al., 2003). Gyrodactylids feeding on the mucus and epithelium will therefore be at a disadvantage on any host able to suppress the increase in *il-1 $\beta$*  production. Indeed, a reduction in the density of mucous cells is also associated with infection (Buchmann and Uldal, 1997; Dalgaard et al., 2003); however, this relationship may reverse later in infection as the mucous begins to contain higher concentrations of anthelmintic effectors (Buchmann and Bresciani, 1997). The major effector associated with resistance is alternatively activated complement present in both the serum and mucus (Buchmann, 1998; Harris et al., 1998). Immunocytochemical assays demonstrated binding of C3 to the cephalic gland opening, body and hamulus sheath of the parasite but found no immunoglobulin binding (Buchmann, 1998). Resistant salmon also have increased *il-10*, *mhc II* and *serum amyloid A* transcript 3–6 weeks postinfection in the

epidermis of infected fins (Kania et al., 2010). The immune response to gyrodactylids can therefore be separated into two distinct stages: the passive stage where mucus production is inhibited to restrict parasite population growth and the immunologically active stage where complement and other effectors reduce the intensity of infection allowing host recovery. In infections with *Gyrodactylus* spp. it is therefore possible to infer the point at which the immune system is most active by virtue of the declining parasite population. For example, on *G. salaris* infected Baltic salmon and *G. gasterostei* infected sticklebacks, population reduction occurs at 2–3 weeks postinfection at 12°C (see Bakke et al., 2002; de Roij et al., 2011; Raeymaekers et al., 2011), although such data may be confounded by the death of heavily infected fish during this time period.

### 3.6 *Saprolegnia parasitica*

#### 3.6.1 Introduction

Oomycetes present a major threat to not only food security in aquaculture but also terrestrial food sources, the most prominent being *Phytophthora infestans*, which caused the 19th century Irish potato famine (Haverkort et al., 2008). In freshwaters, oomycetes from the genera *Saprolegnia*, *Achlya* and *Aphanomyces* (Order Saprolegniales, Subclass Saprolegniomycetidae) are responsible for significant losses of fish (Jeney and Jeney, 1995; van West, 2006). As fungal-like heterotrophs they have branching tip-growing mycelia, typically thicker than fungi at 10 µm diameter, and unlike fungi they have cellulose and only a little chitin in their cell wall. Chitin synthases are present in the genome but are thought only to have a role in hyphal tip growth (Baldauf et al., 2000; Guerriero et al., 2010; Beakes et al., 2012; Jiang et al., 2013). Species identification typically depends on sequencing of the rDNA ITS region (Sandoval-Sierra et al., 2014). A full genome sequence is available for *S. parasitica* isolate CBS223.65 (Jiang et al., 2013).

The *Saprolegnia* life cycle, as with other oomycetes, has an asexual stage including the development of sporangia and zoospores and a sexual stage resulting in the production of oospores (see van West, 2006). The asexual stage is the primary method of infecting new hosts as free-swimming zoospores are released into the environment (Hatai and Hoshiai, 1994; Willoughby, 1994; Bruno and Wood, 1999). The sexual production of oospores is thought to enhance survival under acute stress conditions, such as temperature extremes or desiccation, until conditions become more favourable. Some *Saprolegnia* species (including most strains of *S. parasitica*

Coker, 1923), however, seem to lack a sexual cycle and do not produce oospores, at least under laboratory conditions.

Two of the major oomycetes of fish *S. parasitica* and *Saprolegnia diclina* infect adults and eggs, respectively (van den Berg et al., 2013). *Saprolegnia* species were controlled using the organic dye malachite green until 2002 when it was banned in aquaculture because of its carcinogenic properties. Formalin, although notionally carcinogenic, is still currently permitted as a treatment (Srivastava et al., 2004; van West, 2006; Sudova et al., 2007). Current control methods for salmonid eggs include formalin, salt and ozone water treatment (Fornerisa et al., 2003; Khodabandeh and Abtahi, 2006; van West, 2006) of which formalin can also be used to treat or reduce mortality in fry, parr, smolts and adult fish (Ali, 2005; Gieseke et al., 2006).

During infection, *S. parasitica* secretes a SpHtp1 protein, which is able to translocate independently into fish cells via an interaction with a host cell surface tyrosine-O-sulphated molecule (van West et al., 2010; Wawra et al., 2012). The precise function of SpHtp1 is unknown, but it likely plays a role in the infection process. This finding and the immunomodulation capabilities of *S. parasitica* (see Belmonte et al., 2014) suggest that the interaction is more complex than previously considered. It is now becoming clear that *S. parasitica* is a primary pathogen rather than a secondary opportunistic pathogen as has often been assumed (e.g., Hoole et al., 2001).

### 3.6.2 Source, culture and infection

Cultivated strains of *S. parasitica* are held at various institutions, but the parasite can also be isolated from wild fish. The mycelia can be maintained on potato dextrose agar (PDA) (e.g., van West et al., 2010; Belmonte et al., 2014; Sun et al., 2014; Parra-Laca et al., 2015) (Table 2) in 140 mm Petri dishes indefinitely at 15–25°C (light cycle and humidity unimportant). Cultures should be replated every month, to protect against bacterial and fungal contamination, by transferring a 5 mm dia. plug of healthy (white/grey in colour with no yellowing or other fungal growth) mycelium from one Petri dish to another. Cultures held on PDA should also be passaged through fish or cell lines every few generations to maintain virulence (Songe et al., 2014). To isolate a wild strain, mycelia are scrapped off an infected fish and inoculated onto a PDA plate containing chloramphenicol at 50 mg/mL to inhibit contamination (e.g., Songe et al., 2014; Kalatehjari et al., 2015; Thoen et al., 2015); chloramphenicol should not be used to maintain the culture as it is fungistatic (Rooke and Shattock, 1983). The *Saprolegnia* mycelium should then be replated (typically 2–5 times), taking 5 mm dia.

plugs from the leading edge until a pure culture is obtained devoid of bacteria and fungi. The *Saprolegnia* mycelium is cotton-like and white/grey in colour, all other growth should be avoided when taking the plug for culture.

To infect sticklebacks from a stock PDA culture, three mycelium plugs (5 mm dia.) should be taken from the PDA stock and placed on a 140 mm Petri dish with 70 mL of pea broth (Table 2) for 72 h at 25°C. Following incubation, agar plugs are removed using sterile forceps and the pea broth withdrawn using a sterile syringe or pipette. The mycelium is then washed three times with 70 mL of a 50/50 mixture of distilled and tank water in the Petri dish. During each wash, after the addition of the water mix, the mycelium should be agitated before the water mix is removed. Finally, 30 mL of the 50/50 distilled and tank water mixture is added to the Petri dish before it is incubated for a further 24–48 h at 15°C (Powell et al., 1972; Riberio, 1983). Alternatively, cleaned mycelium can be dispensed from one Petri dish into 500 mL of 50/50 distilled and tank water, incubating for 24–48 h at 15°C. The cultures should be checked for spore production under a microscope ( $\times 100$ ), and the spores isolated by straining the *Saprolegnia* through a 40  $\mu\text{m}$  cell strainer using a cell scraper to remove encysted spores from the Petri dish. Spore density is calculated using a haemocytometer, if necessary concentrating the sample by centrifuging at 3000 g for 5 min at room temperature, removing the excess supernatant and resuspending the spores in distilled water. Fish are infected using the ami-momi technique, in which salmonids are typically shaken in a net for 2 min (Hatai and Hoshiai, 1994), this duration of shaking is excessive for sticklebacks instead we recommend 30 s. Shaken fish are then exposed, ideally individually, to  $3 \times 10^5$  spores per litre (e.g., Belmonte et al., 2014), consistent with spore concentrations found in fish farms (Thoen et al., 2010).

The infection intensity of *S. parasitica* can be crudely analyzed by photographing an infected fish and calculating the total body coverage of erupted hyphae (e.g., Fregeneda Grandes et al., 2001), but qPCR methods are being developed (van West et al. unpublished). Given the rapid time to mortality for infected fish, morbidity and prevalence of infection can also be used as a measure of *S. parasitica* virulence (e.g., Pickering and Duston, 1983; Hussein and Hatai, 2002; Giesecker et al., 2006).

### 3.6.3 Immunology

With true fungal infections it is generally accepted that cellular-mediated immunity, particularly T-helper cell type 1 ( $T_H1$ ) responses, are required

for clearance of an infection (Blanco and Garcia, 2008). In general, hosts infected with oomycetes induce innate immune responses to infection, but some aspects of humoral immunity have also been found (see Roberge et al., 2007; Blanco and Garcia, 2008; Belmonte et al., 2014; Minor et al., 2014). Of particular interest is the humoral response towards the protein SpSsp1, which may provide a novel target for vaccine development (Minor et al., 2014). Given the rapid and destructive progression of *S. parasitica* infections, immune responses must likewise be fast acting and avid. On infection with *S. parasitica*, fish undergo a rapid acute response including upregulation of genes transcripts involved in all three complement pathways (classical, alternative and lectin) (Roberge et al., 2007). Upregulation of C1r, C2, mannose-binding lectin (MBL) indicate involvement of the alternative and lectin pathways, while substantial upregulation of C3 and C6, beyond what might be expected from just classical and MBL pathway activation, is postulated as the main reason for involvement of the alternative pathway (Roberge et al., 2007). Other immune-related genes including *ATP-binding cassette transporter* (required for MHC class I antigen presentation) and the cytokine receptors *CXCR4* (chemokine of importance in humoral immunity) and *cd63* (cell development and growth of multiple immune cells) are upregulated (Roberge et al., 2007). Fish also produce a response to tissue damage caused by *S. parasitica*, including induction of proinflammatory genes such as *il-1 $\beta$* , *il-6*, *tnf- $\alpha$*  and *cox2* (Kales et al., 2007; de Bruijn et al., 2012; Belmonte et al., 2014). In addition to upregulation of inflammatory genes, the parasite is capable of immunomodulation by means of prostaglandin E<sub>2</sub> causing suppression of cellular immunity, including a reduction in *cd8a* and *ifn- $\gamma$*  transcripts (Belmonte et al., 2014). Proinflammatory genes are also upregulated by prostaglandin E<sub>2</sub> (IL-6, IL-8, IL-17) (Belmonte et al., 2014), an expression profile that in fungal infections is permissive to infection (Traynor and Huffnagle, 2001). Similar immune evasion strategies are employed by true fungi, which are capable of driving antiinflammatory response and a shift towards a T<sub>H</sub>2 profile, through TLR2 (Netea et al., 2003, 2004).

### 3.7 *Schistocephalus solidus*

#### 3.7.1 Introduction

Plerocercoid larvae of the diphylobothriidean cestode *S. solidus* (Müller, 1776) (Fig. 9) commonly infect sticklebacks in ponds, lakes and slow flowing rivers (Wootton, 1976; Barber, 2007). *S. solidus* is one of the most studied stickleback parasites and was the first parasite for which a complex, multihost



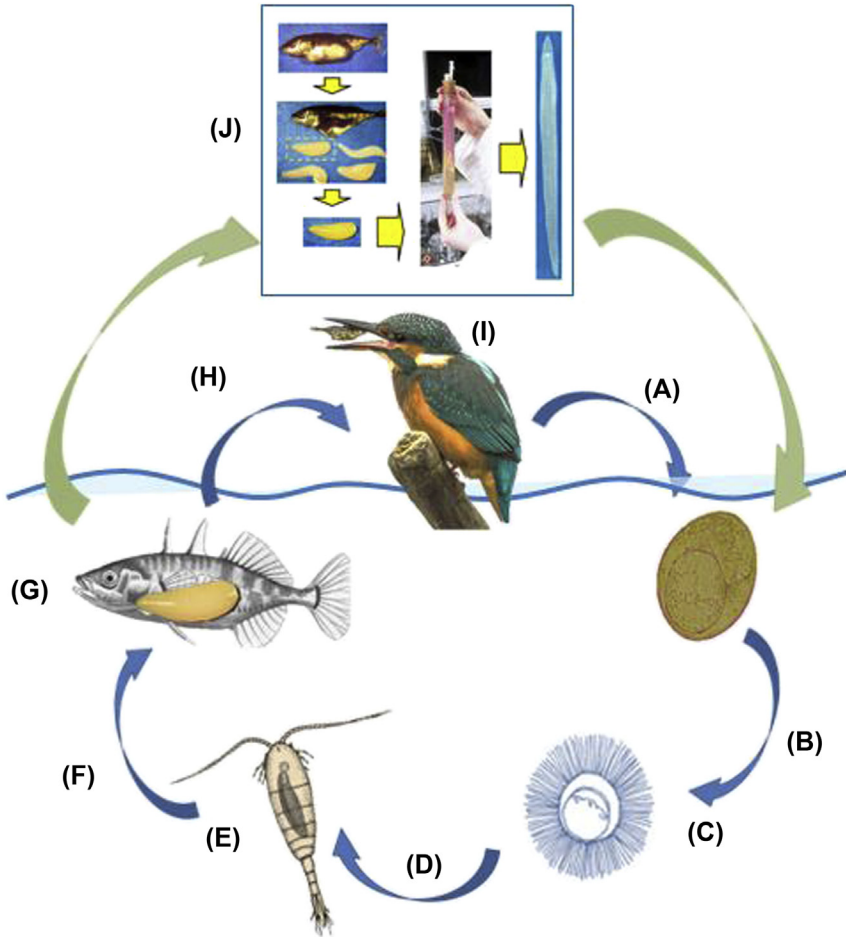
**Figure 9** *Schistocephalus solidus* infected three-spined stickleback, showing four plerocercoids recovered from the body cavity. Photograph (c) Iain Barber.

life cycle was demonstrated experimentally (Abildgaard, 1790) (Fig. 10). Experimental culture techniques, which permit physiological and developmental studies of the maturing plerocercoid, have been in existence for decades (Hopkins and Smyth, 1951; Clarke, 1954; Smyth, 1954, 1959, 1962; Arme and Owen, 1967) and are well established (Jakobsen et al., 2012). The stickleback–*Schistocephalus* host–parasite model has been widely used for studying the impacts of infection on host energetics (Barber et al., 2008), growth and reproductive development (Heins and Baker, 2008) as well as on host behaviour (Milinski, 1985, 1990; Barber and Schar-sack, 2010; Hafer and Milinski, 2016). Recently, experimental infection studies have been used to investigate evolutionary aspects of host–parasite interactions (MacColl, 2009; Barber, 2013) and host immune responses (Scharsack et al., 2004, 2007b; Barber and Scharsack, 2010), as well as the impacts of changing environments on patterns of infection (MacNab and Barber, 2012; Dittmar et al., 2014; MacNab et al., 2016).

### 3.7.2 Source, culture and infection

Naturally infected sticklebacks, which are readily identifiable by their swollen profile, (Barber, 1997) can be collected from the wild and used as a source of infective parasites for experimental culture (e.g., Arnott et al., 2000; Barber and Svensson, 2003; Scharsack et al., 2007b). Whilst sticklebacks can harbour multiple *S. solidus* plerocercoids, infected fish often support a low number of large plerocercoids (Arme and Owen, 1967; Heins et al., 2002). The total mass of plerocercoids can approach that of the host fish (Arme and Owen, 1967). Plerocercoids can be successfully cultured in vitro from sizes of 20 mg (Tierney and Crompton, 1992; Dörücü et al.,





**Figure 10** The life cycle of *Schistocephalus solidus*. (A) Eggs released with the faeces of piscivorous birds harbouring adult worms enter water and undergo development. (B) Embryonated eggs hatch releasing motile coracidia (C), which are ingested by cyclopoid copepods (D). The parasite develops into a proceroid in the haemocoel of infected copepod (E) and if the host is subsequently ingested by a susceptible stickleback fish, (F) the parasite bores through fish intestine and into the body cavity, where undergoes substantial growth to form a large plerocercoid (G). If the infected fish is then ingested by a bird (H), then the parasite completes its maturation in the bird's intestine and produces eggs (I). (J) Plerocercoids are selected and put into an artificial bird gut for in vitro cultivation. Plerocercoids can be removed from the body cavity of infected sticklebacks and cultured in vitro in conditions mimicking the avian intestine, to allow the generation of eggs, which can be hatched under lab conditions and used to undertake experimental infections of copepods and, ultimately, fish.



2007), but they are only reliably infective to avian hosts at a body size of  $\geq 50$  mg (Tierney and Crompton, 1992).

Infective *S. solidus* plerocercoids are readily recovered from the body cavity of euthanized, naturally infected sticklebacks following ventral incision. Complete, whole plerocercoids should be transferred using sterilized laboratory forceps to a preautoclaved culture vessel containing a loop of narrow-diameter semipermeable membrane suspended in *S. solidus* culture media (see Table 2). As they are hermaphroditic, worms can be cultured individually (i.e., 'selfed') or in pairs (i.e., outcrossed) (Milinski, 2006). Compression of the worms by the cellulose tubing simulates conditions in the intestine of the bird definitive host and encourages fertilization (Smyth, 1990). The worms, suspended in this 'model gut' inside the culture vessel, are incubated at 40°C in darkness, ideally in a water bath with lateral shaking at a frequency of 80 cycles per minute, which dissipates metabolic products. To reduce bacterial and fungal infections, antibiotics and anti-fungal chemicals can be added to the culture medium (Jakobsen et al., 2012). Plerocercoids are progenetic (i.e., exhibit advanced sexual development in the larval stage) and the morphological transition to the adult worm is rapid, with fertilized eggs being produced from day two onwards in vitro. Egg production continues for several days, after which the adult worm dies (Dörücü et al., 2007).

The eggs, along with the senescent or dead adult worm(s), should be flushed with dH<sub>2</sub>O from the cellulose tubing into a Petri dish (12 cm dia.). To clean the egg solution, excess dH<sub>2</sub>O is added to the dish and a gentle swirling movement is used to concentrate the eggs; this is best achieved whilst viewing under low power using a dissecting microscope with cold light illumination. Because the eggs are negatively buoyant, they readily aggregate in the centre of the Petri dish. A pipette can then be used to remove detritus, including tegument of the adult worm, from the egg solution. Repeated iterations of this process, interspersed with dispersing the egg mass, generate a sufficiently clean egg solution for subsequent incubation. Eggs can then be split between multiple sterile Petri dishes, filled to a depth of 5 mm with dH<sub>2</sub>O, sealed with Parafilm and wrapped in aluminium foil to restrict premature exposure to light.

Eggs are incubated for 21 d at 20°C in the dark before being exposed to natural daylight to induce hatching (Scharsack et al., 2007b). Preexposure to a short (c. 2 h) period of light, the evening before desired hatching, may improve subsequent hatch rates (Dubinina, 1966). Hatched eggs release

coracidia, which are spherical, ciliated, free-swimming L1s. Coracidia move actively for c. 12–24 h after hatching at normal laboratory temperatures, but apparently senescent (i.e., motionless) coracidia can establish infections in copepod hosts (unpublished data). Coracidia are collected using a Pasteur pipette and transferred to a drop of dH<sub>2</sub>O on a watch glass, Petri dish, microscope slide, or in a well of a 96-well microtitre plate. An individual cyclopoid copepod (typically *Cyclops strenuus abyssorum* or *Macrocyclus albinus*) is then added to the water drop containing the hatched coracidium (coracidia) to allow trophic transmission. It is important to cover the water droplet to prevent evaporation. The water droplet is visually inspected under a dissection microscope to check that the coracidium has been ingested, after which the exposed copepod can be transferred to a larger volume of water and fed under normal culture conditions for 7 d, fed either newly hatched *Artemia* spp. nauplii or a few drops of *Spirulina* feed (Table 2). Copepods are then screened at 7 d postexposure for infection status. The proceroid stage that develops within the copepod is infective to sticklebacks (Dubinina, 1966) when it develops a hooked cercomer – a caudal appendage used by the parasite during invasion of the fish host (Barber and Scharsack, 2010; Benesh and Hafer, 2012; Benesh, 2013).

Infection of sticklebacks in the laboratory can be achieved by gavage feeding or allowing free feeding by isolated sticklebacks (e.g., Barber and Svensson, 2003; Hammerschmidt and Kurtz, 2005; Scharsack et al., 2007b; MacNab and Barber, 2012). Individual sticklebacks can be held in a crystallizing dish (15 cm dia.) filled to 3 cm with aquarium water, illuminated from above using a cold light source and surrounded by black paper to improve contrast. Feeding can be encouraged by moving an infected (i.e., cercomer-bearing proceroid) copepod up and down within the neck of a long-form Pasteur pipette immediately in front of a stickleback that has been starved for 24 h, before releasing it into the water. Alternatively, fish can be left to forage for 6 h in a small (1 L) plastic aquarium containing a few newly hatched *Artemia* spp. nauplii and an infected copepod. Exposure can be confirmed by direct observation of the ingestion event or by sieving the water to confirm ingestion of the copepod.

Infections of sticklebacks with *S. solidus* most commonly use the parasite mass as an endpoint measurement to determine the intensity of infection. The mass of both the stickleback and parasites in this infection system can vary dramatically and, as such, the parasite index =  $\frac{\text{Total parasite mass}}{\text{Total fish parasite mass}} \times 100$  (Arme and Owen, 1967) is often used as a measure of intensity (e.g., Giles, 1983; Tierney et al., 1996; Kurtz et al., 2004; Barber, 2005). Alternatively,

a measure of volume can be produced for plerocercoids whose mass is too small to be measured directly (e.g., [Wedekind et al., 2000](#); [Scharsack et al., 2007b](#)): the plerocercoid is photographed under a microscope and taking the maximal area of the longitudinal section of its body and applying the following formula  $\text{volume (mm}^3) = e^{0.279} \times \text{area } (\mu\text{m}^2) \times 10^{-9}$  (see [Wedekind et al., 2000](#)).

The growth of the plerocercoid stage in vivo can be estimated noninvasively using image analysis based on the infection-induced swelling ([Barber, 2007](#)), facilitating longitudinal studies of infection and parasite growth. Individual coracidia can be stained using persistent fluorescent dyes ([Kurtz et al., 2002](#)), allowing differentiation of individual parasites in mixed infections. Finally, there are now microsatellite markers and other ecological, genomic and transcriptomic resources that facilitate taxonomic studies ([Binz et al., 2000](#); [Nishimura et al., 2011](#); [Sprehn et al., 2015](#); [Hébert et al., 2016](#)).

### 3.7.3 Immunology

A rapid host immune response is thought to be crucial for host resistance against *S. solidus*, preventing establishment within the body cavity. Infection prevalence drops from 60% in the first week to 54%–52% one month post-infection, but with no further decline thereafter ([Scharsack et al., 2007b](#); [Benesh, 2013](#)). In addition, no dead *S. solidus* are detected in the body cavity after 17 days postinfection, suggesting that this is the effective limit of the immune response against the parasite ([Scharsack et al., 2007b](#)). Resistance to *S. solidus* is associated with early proliferation of head kidney monocytes and lymphocyte proliferation 7 days postinfection ([Barber and Scharsack, 2010](#)), the rate of lymphocyte production then drops drastically in both resistant and susceptible fish 17 days postinfection ([Scharsack et al., 2007b](#)). Monocyte production also undergoes changes during infection, being elevated in susceptible fish at 7 and 27 days postinfection but reduced at 17 days postinfection compared to controls ([Scharsack et al., 2007b](#)). There is no obvious involvement of the adaptive response in resistance to a primary *S. solidus* infection, as this would take 2–3 weeks to be active in fish at 18°C, by which time plerocercoids are already established ([Barber and Scharsack, 2010](#)). There is, however, evidence that at some levels the adaptive response is involved at least in tolerating an infection. Intermediate MHC class *IIB* diversity has been linked to a reduction in the parasite index and an increase in the respiratory burst response; the prevalence of infection was unaffected by this diversity ([Kurtz et al., 2004](#)).

The stickleback immune response to *S. solidus* also involves upregulation of responses, including adaptive immunity, from 47 days postinfection that are not linked to resistance in a primary infection as the plerocercoid is already well established. Head kidney lymphocyte respiratory burst is upregulated 47–67 days postinfection (Barber and Scharsack, 2010) and granulocytes increase in proportion until 63 days postinfection (Scharsack et al., 2004). Further transcriptomic analysis found upregulation of innate tolllike receptor, complement and macrophage genes as well as upregulation of adaptive MHC genes 50 days postinfection (Haase et al., 2016).

An active adaptive response late in infection may support a role for immunological tolerance of *S. solidus* infections (Jackson et al., 2014), or concomitant immunity, though we are unaware of any direct tests of this hypothesis. In addition, sticklebacks with high or low diversity in the MHC class *IIB*, which is correlated with MHC expression (Wegner et al., 2006), harboured larger parasites, while those with intermediate diversity had smaller worms (Kurtz et al., 2004). This supports the notion of hosts with intermediate (optimal) MHC diversity suffering less from infection (Wegner et al., 2003a,b). Such a result may also support a role for tolerance, as the immune system shifts (~47 days postinfection) to focus less on resistance and more on restricting plerocercoid growth rate and perhaps improving fish condition. This late immune response, which is known to last from 45 to 67 days postinfection, correlates with plerocercoids reaching infective weight for the definitive host at approximately 47 days postinfection (Scharsack et al., 2007b). Concomitant immunity may therefore also be a viable hypothesis as this would inhibit secondary infections from acquiring vital nutrients at this crucial life history stage (and *S. solidus* is known to alter the susceptibility of the host to infection by other species; Benesh and Kalbe, 2016). In addition, head kidney lymphocytes exposed to the excretory products of mature *S. solidus* (>50 mg) in conditioned culture media expressed higher respiratory burst activity, associated with granulocyte viability, which may also manipulate host behaviour via the immune–neuroendocrine axis and aid transmission to the definitive host (Scharsack et al., 2013).



#### 4. TREATING COMMON INFECTIONS

Not all parasitic infections of sticklebacks can be eliminated, and the decision to treat fish, and the nature of treatment chosen, will be dependent

both on infection history and the nature of the experiment as well as a cost benefit trade-off. A list of common treatments for common parasite infections of fish is provided in [Table 4](#).

The most common endemic infections to occur in laboratory studies of sticklebacks are microparasites, commonly *Aeromonas* spp., *Flavobacterium* spp., *Pseudomonas* spp., *I. multifiliis* and *S. parasitica*. These infections often establish when fish are physiologically stressed, for example, by experimental procedures, altered environmental conditions or following capture and/or transportation. These pathogens are ubiquitous, present in most water bodies and therefore are difficult to eliminate from aquatic systems. Additionally, *Gyrodactylus* spp. and *Trichodina* spp. ([Fig. 11A](#) and [B](#)) are easily introduced into tanks with other fish or as a result of imperfect net hygiene. Most *Trichodina* spp. and other ectocommensals including *Epistylis* spp. and *Apiosoma* spp. are asymptomatic at low numbers but may become pathogenic at high intensities ([Collymore et al., 2013](#)). Even low-level endemic *Gyrodactylus* infections can result in epidemics after several weeks in captivity if not treated immediately, and even mild infections probably affect host behaviour and physiology. Wild sticklebacks may be infected with heteroxenous parasites such as *S. solidus*, *Diplostomum* spp. and *C. lacustris*, but these parasites cannot be transmitted without the presence of their intermediate hosts. Although *G. anomala* may be transmitted directly, the details of transmission are unclear. Transfer of water between tanks should be avoided in all cases. Nets are a common source of water transfer and should be sterilized in Virkon or sodium metabisulfite (in accordance with manufacturer's instructions), rinsed and fully dried before reuse. Infected fish should be isolated and treated as indicated in [Table 4](#); early detection and rapid treatment is key for the majority of infections.

*Aeromonas* spp. and *Pseudomonas fluorescens* cause red ulcers, small white/grey marks on the fins and head, fin rot and ultimately death. Because it is often difficult to distinguish these two infections without biochemical or molecular techniques, a broad-spectrum antibiotic should be used following consultation with a veterinarian; if severe damage occurs the fish should be euthanized using a procedure approved by the relevant regulatory authority.

The highly contagious protozoan parasite *I. multifiliis* causes small white spots on the fins and skin of the fish. The simplest method of treatment is increasing water salinity ([Selosse and Rowland, 1990](#); [Miron et al., 2003](#); [Garcia et al., 2007](#)) and adding methylene blue ([Tiemann and Goodwin, 2001](#)) (see [Table 4](#)). A low concentration formalin or malachite green

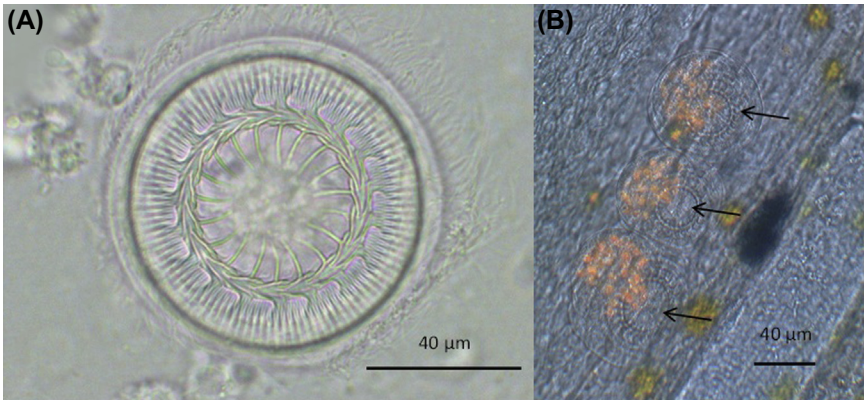
**Table 4** Common treatments for stickleback infections, indicating treatment dose, duration, repeated treatments and frequency

Treatment	Concentration	Time	Dosage	References
Antibiotics	—	—	Consult with a vet	
Formalin <sup>a</sup> (Low)	0.015–0.025 mL/L	72–96 h	Once	Chinabut et al. (1988)
Formalin <sup>a</sup> (high)	0.15–0.25 mL/L	30 min	Twice in 24 h Allow fish 30 min rest in freshwater between treatments	Chinabut et al. (1988) Francisn–Floyd (1996)
Malachite green <sup>b</sup> (Water–low)	0.1–0.25 mg/L	72 h	1–3 times	Alderman (1985) Srivastava et al. (2004) Sudova et al. (2007)
Malachite green <sup>b</sup> (Water–high)	1–2 mg/L	30–60 min	1–3 times Allow 24 h between treatments	Alderman (1985) Srivastava et al. (2004) Sudova et al. (2007)
Malachite green <sup>b</sup> (Formalin <sup>a</sup> )	0.015 mL/L of stock solution	24 h	3 times every 24 h	Alderman (1985) Srivastava et al. (2004) Sudova et al. (2007)
Methylene blue <sup>c</sup>	2 mg/L	>24 h	Readminister every 2–3 days	Tieman and Goodwin (2001)
Salt	0.5–3% (5–30 ppt)	>24 h	Increase concentration at 0.5% daily	Matthews (2005) van West (2006)
Stress coat (API)	Follow manufacturer's instructions	>24 h	Follow manufacturer's instructions	Harnish et al. (2011)

<sup>a</sup>Formalin is a 40% formaldehyde solution, wear appropriate personal protective equipment (PPE) and use in a well ventilated area. Paraformaldehyde is a white precipitate highly toxic to fish, discard solutions with white precipitate. Formalin depletes oxygen from water, so it is important to supply additional aeration for fish. Monitor fish for gasping, fin whitening, unusual swimming; if these symptoms occur discontinue treatment. Formalin treatments can be purchased from pet shops, follow instructions in these cases.

<sup>b</sup>Malachite green is a suspected carcinogen and respiratory poison, wear appropriate PPE and conduct in a well ventilated area. A zinc free grade must be used. For a formalin stock add 3.3 g malachite green per 1 L of formalin.<sup>a</sup>

<sup>c</sup>Methylene blue can reduce bacterial concentrations of tanks. Monitor biological filter systems and test for nitrate, nitrite, ammonia and pH.



**Figure 11** *Trichodina* sp. (A) Phase contrast. (B) Combined bright field and fluorescence images of *Trichodina* sp. (arrows) on a three-spined stickleback fin showing vacuoles within the protozoa stained with Di-4-ANEPPS.

treatment may also be used (e.g., [Leteux and Meyer, 1972](#); [Tiemann and Goodwin, 2001](#)) following the low and prolonged immersion dose ([Table 4](#)) or an off-the-shelf formulation used following manufacturer's instructions. Given the complexity of the life cycle, and the fact that resistance is common, multiple treatment doses are likely to be required.

For *Saprolegnia* infections, prevention (0.5% saline water) is definitely better than cure ([Ali, 2005](#); [van West, 2006](#)); once a fish is symptomatic it may survive no more than a few days, occasionally even hours, or be irreparably damaged and must be euthanized using an approved procedure. If *Saprolegnia* infection does occur, the most effective treatment is a high dose malachite green in formalin treatment ([Table 4](#)) or a low concentration formalin treatment (see [van West, 2006](#)). To aid recovery and prevent reinfection following formalin exposure, the fish should be transferred to 0.5%–1% salt solution, with the possible addition of methylene blue ([Table 4](#)).

Gyrodactylid treatments are problematic because 100% efficacy is required and transmission can easily occur between adjacent tanks by water or net transfer. The only tested treatment that works consistently for stickleback gyrodactylids in our laboratory at Cardiff University is a high concentration formalin bath ([Table 4](#)) ([Buchmann and Kristensson, 2003](#)). Other less damaging pharmaceutical treatments for the fish, such as Praziquantel and Levamisole, are of variable efficacy that may depend on the exact conditions of exposure, at least for this fish species ([Schelkle et al., 2009](#)). After treatment, screening for the parasite should be performed three



times, no more than once per day, to ensure the parasite has been removed effectively from the entire host population (see [Schelkle et al., 2009](#)).

Ciliated *Trichodina* spp. protists are only visible under a low powered ( $\times 10$ – $60$  mag.) microscope ([Fig. 11](#)). They appear as ‘flying-saucer’ shaped disks gliding over the body, fins and gills of the fish. Changing tank water regularly to keep the water crystal clear effectively eliminates most *Trichodina* spp., which feed on bacteria ([Lom, 1973](#)). If the clean water treatment fails, which is rare, low dose malachite green treatment is usually successful after two to three doses ([Table 4](#)) ([Leteux and Meyer, 1972](#)). Other infections, *G. anomala*, *Diplostomum* spp. and the macroparasitic internal parasites are either difficult to treat, cannot be treated or may not need treatment. *Diplostomum* spp. found in the lens and vitreous humour may be treated with Praziquan-*tel*, although efficacy is variable and depends on undetermined factors. *S. solidus* worms that have migrated through the intestine and into the body cavity cannot be treated. *G. anomala* also cannot be cured, although some success has been achieved in reducing spore survival using benzimidazole treatments ([Schmahl and Benini, 1998](#)).



## 5. COINFECTING PARASITES

Despite the overwhelming tendency for wild and even commercially bred sticklebacks to be coinfecting, there is relatively little knowledge about interspecific parasite competition in sticklebacks ([Benesh and Kalbe, 2016](#)). Parasites occupying similar niches are in direct physical and chemical competition for resources such as nutrients and habitat ([Knowles et al., 2013](#)). Such parasites are likely to be antagonistic and may alter their distribution on the host to avoid direct competition, as is the case with coinfecting gyrodactylid species ([Harris, 1982](#)) and coinfecting *Proteocephalus filicolis* and *Neoechinorhynchus rutili* (see [Chappell, 1969](#)). On the other hand, parasites separated by niche may interact indirectly via the immune system whilst simultaneously competing for host resources ([Pedersen and Fenton, 2007](#)). Suppression or enhancement of the immune response by a parasite will then alter the outcome of subsequent infections; changing host susceptibility and pathology, parasite virulence and infection duration ([Correa-Oliveira et al., 2002](#); [Lively, 2005](#); [Fleming et al., 2006](#); [Benesh and Kalbe, 2016](#)). Such responses, particularly those mediated by the immune system, may even be synergistic as immunosuppression by one parasite increases prevalence or intensity of another ([Su et al., 2005](#); [Fleming et al., 2006](#); [Benesh and Kalbe, 2016](#)). There is a general lack of information on *G. anomala*



infections and associated immune responses and so this will not be covered here; however, given the site of infection and the occasional severity of infection it is highly likely that this species does impact coinfecting parasites.

Some parasites may be used as a 'marker of other infections' (where a change in prevalence, intensity or distribution indicates an interaction between coinfecting parasites); such relationships may be synergistic or antagonistic. The ability to track viviparous gyrodactylid population trajectories over time, directly and noninvasively, makes them particularly useful as a marker for the consequences of coinfection. Modulation of the immune system (Section 3.5.3) and resource competition by coinfecting parasites will alter the population trajectory, allowing the effects of coinfection to be tracked over time. In addition, the migration of gyrodactylids across the exterior surfaces of hosts (Harris, 1982) allows population distribution patterns to be utilized as a method of assessing the outcome of competition among coinfecting parasites. Such spatial positioning assessments may also be made with other ectoparasites, such as argulids, and endoparasites, for example, by considering position in the gut (e.g., Chappell, 1969). The terminal nature of this approach with endoparasites, however, means that such studies cannot produce the repeated measures that make gyrodactylids so useful. Changes in the prevalence of secondary infections will also be linked to high levels of stress or immune modulation associated with the primary infection (e.g., Shoemaker et al., 2008; Roon et al., 2015). As such, secondary *S. parasitica* infections as a 'marker' might also prove possible in the absence of the ami-momi infection technique, particularly if the strain is virulent and the primary infection induces stress.

For coinfection studies where only a short period of immune regulation or infection is required, *Diplostomum* spp. and *Argulus* spp. provide ideal models. As *Diplostomum* migrates to the immune privileged eye, it generates a short-lived spike in the innate response between 1.5 and 5 days postinfection (Kalbe and Kurtz, 2006; Scharsack and Kalbe, 2014), after which it will no longer modulate the immune system and will not be in direct competition with other parasite genera. Short-medium term competition and innate immune responses can be induced by *Argulus* spp. with the period of coinfection dictated by removing the infected individuals from the fish (see Section 3.1). The immunomodulatory effects of *Argulus* also provide an opportunity to study the consequences of immune suppression (Saurabh et al., 2010; Kar et al., 2015). Short-term coinfections with *S. parasitica* are also possible, but the usefulness of this pathogen is hindered by its virulence and infection method.

Long-term infections can usually be achieved with endoparasites, which — because of their life cycles — will often provide long periods of

competition with concurrently infecting parasites and the host's immune response. The major drawback with endoparasitic species is an inability to accurately determine prevalence, intensity and distribution without destructive sampling. Gastrointestinal parasites (e.g., *C. lacustris*) typically provide a sustained long-term infection that will be in direct competition with other gastrointestinal parasites. Such infections typically provide a long-term immune response either as a result of host resistance, tolerance- or parasite-induced immunomodulation (e.g., *C. lacustris*; [Section 3.2.3](#)). Being the only species to inhabit the peritoneal cavity of the stickleback, the plerocercoid cestode *S. solidus* is unique, and likely subject only to direct intraspecific competition. Once established in the peritoneal cavity, at a mass of 50 mg, it is not possible for the fish to clear an infection. The timing of the immunological response is therefore quite specific ([Section 3.7.3](#)); giving a clear period of time in which the immune response could affect concurrent infections ([Scharsack et al., 2007b](#); [Barber and Scharsack, 2010](#)). The utility *S. solidus* is therefore specific to its ability to induce long-term competition for resources, a short-term immune resistance phenotype and a delayed response; the purpose of the delayed response is not yet fully elucidated ([Section 3.7.3](#)).



## 6. SUMMARY

With an increasing threat of disease in aquaculture and with climate change altering host–parasite interactions, a reliable model for studying these impacts has been found in the stickleback. The stickleback provides a particularly useful model as it shares many characteristics with economically important fish species such as salmon and trout including its temperate habitat, omnivorous nature and evolutionary history. In depth knowledge of the stickleback's evolutionary history, ecology, parasitology and genetic architecture has put this species at the pinnacle of aquatic vertebrate research. Despite this, much of the knowledge of parasite culture techniques and treatments along with basic stickleback husbandry was confined to older and sometimes inaccessible literature, with methods that had been updated sporadically or that varied between different research groups. This article has brought together expertise in the culture of sticklebacks and parasites to generate a single text that lays out a framework of techniques for new or established laboratories that wish to begin investigating stickleback host–parasite interactions in the laboratory, or to expand their repertoire of available parasite models.

While the number of studies on the three-spined stickleback immune system is increasing, different laboratories have focussed on different aspects: direct measurements of ex vivo or in vivo phenotypic responses, MHC genetics, or gene expression measurements employing real-time PCR or RNAseq, in response to different pathogens. As a result it can be difficult to reconcile the different approaches. For example, while we know that MHC constitution plays a part in parasite resistance, we know little about how that translates into the active immune phenotype that actually combats infection. Certain alleles may stimulate specific immune phenotypes or more simply allelic diversity may lead to an overall more active immune response. At a functional level, greater diversity of MHC alleles means different repertoires of peptides may be presented during an immune response, leading to expansion of T- and B-cell receptor specificities that affect the success of the adaptive response. When we begin to take a more holistic approach to such problems it is likely that we will lift the shroud on previously unknown aspects of the teleost immune system.

## ACKNOWLEDGMENTS

This work was funded by the Leverhulme Trust (RPG-301) and the H2020 Marie Skłodowska-Curie Actions COFUND (Project 663830). JC dedicates this manuscript to her late husband, Ian.

## REFERENCES

- Abildgaard, P.C., 1790. Almindelige betragtninger over indvolde-orme, bemaekninger ved hundstellensBaendelorm, og beskrivelse med figurer af nogle nye baendelorme. Skr. Natur-Selsk. 1, 26–64.
- Aeschlimann, P.B., Häberli, M.A., Reusch, T.B.H., Boehm, T., Milinski, M., 2003. Female sticklebacks *Gasterosteus aculeatus* use self-reference to optimize MHC allele number during mate selection. Behav. Ecol. Sociobiol. 54, 119–126.
- Ahne, W., 1985. *Argulus foliaceus* L. and *Philometra geometra* L. as mechanical vectors of spring viraemia of carp virus (SVCV). J. Fish. Dis. 8, 241–242.
- Ahne, W., Bjorklund, H., Essbauer, S., Fijan, N., Kurath, G., Winton, J., 2002. Spring viremia of carp (SVC). Dis. Aquat. Organ. 52, 261–272.
- Alderman, D.J., 1985. Malachite green: a review. J. Fish Dis. 8, 289–298.
- Ali, E.H., 2005. Morphological and biochemical alterations of oomycete fish pathogen *Saprolegnia parasitica* as affected by salinity, ascorbic acid and their synergistic action. Mycopathologia 159, 231–243.
- Amores, A., Force, A., Yan, Y.-L., Joly, L., Amemiya, C., Fritz, A., Ho, R.K., Langeland, J., Prince, V., Wang, Y.-L., Westerfield, M., Ekker, M., Postlethwait, J.H., 1998. Zebrafish *hox* clusters and vertebrate genome evolution. Science 282, 1711–1714.
- Anaya-Rojas, J.M., Brunner, F.S., Sommer, N., Seehausen, O., Eizaguirre, C., Matthews, B., 2016. The association of feeding behaviour with the resistance and tolerance to parasites in recently diverged sticklebacks. J. Evol. Biol. 29, 2157–2167.
- Arme, B.C., Owen, R.W., 1967. Infections of the three-spined stickleback, *Gasterosteus aculeatus* L., with the plerocercoid larvae of *Schistocephalus solidus* (Muller, 1776), with special reference to pathological effects. Parasitology 56, 301–314.

- Arnott, S.A., Barber, I., Huntingford, F.A., 2000. Parasite-associated growth enhancement in a fish-cestode system. *Proc. R. Soc. Lond. B* 267, 657–663.
- Bai, A., 1981. Photic effects on embryonation and phototactic responses by the larvae of *Argulus siamensis*. *Proc. Anim. Sci.* 90, 513–517.
- Bakke, T.A., Jansen, P.A., Hansen, L.P., 1990. Differences in the host resistance of Atlantic salmon, *Salmo salar* L., stocks to the monogenean *Gyrodactylus salaris* Malmberg, 1957. *J. Fish. Biol.* 37, 577–587.
- Bakke, T.A., Harris, P.D., Jansen, P.A., Hansen, L.P., 1992. Host specificity and dispersal strategy in gyrodactylid monogeneans, with particular reference to *Gyrodactylus salaris* (Platyhelminthes, Monogenea). *Dis. Aquat. Organ.* 13, 63–74.
- Bakke, T.A., Harris, P.D., Cable, J., 2002. Host specificity dynamics: observations on gyrodactylid monogeneans. *Int. J. Parasitol.* 32, 281–308.
- Bakke, T.A., Harris, P.D., Hansen, H., Cable, J., Hansen, L.P., 2004. Susceptibility of Baltic and East Atlantic salmon *Salmo salar* stocks to *Gyrodactylus salaris* (Monogenea). *Dis. Aquat. Organ.* 58, 171–177.
- Bakke, T.A., Cable, J., Harris, P.D., 2007. The biology of gyrodactylid monogeneans: the “Russian-Doll Killers”. In: Baker, J.R., Muller, R., Rollinson, D. (Eds.), *Adv. Parasitol.*, vol. 64, pp. 161–460.
- Bakker, T.C.M., 1993. Positive genetic correlation between female preference and preferred male ornament in sticklebacks. *Nature* 363, 255–257.
- Bakker, T.C.M., Milinski, M., 1991. Sequential female choice and the previous male effect in sticklebacks. *Behav. Ecol. Sociobiol.* 29, 205–210.
- Baldauf, S.L., Roger, A.J., Wenk-Siefert, I., Doolittle, W.F., 2000. A kingdom-level phylogeny of eukaryotes based on combined protein data. *Science* 290, 972–977.
- Balla, K.M., Lugo-Villarino, G., Spitsbergen, J.M., Stachura, D.L., Hu, Y., Ba, K., Romo-Fewell, O., Aroian, R.V., Traver, D., 2010. Eosinophils in the zebrafish: prospective isolation, characterization, and eosinophilia induction by helminth determinants. *Blood* 11, 3944–3954.
- Barber, I., 1997. A non-invasive morphometric technique for estimating cestode plerocercoid burden in small freshwater fish. *J. Fish. Biol.* 51, 654–658.
- Barber, I., 2005. Parasites grow larger in faster growing fish hosts. *Int. J. Parasitol.* 35, 137–143.
- Barber, I., 2007. Host-parasite interactions of the three-spined stickleback. In: Östlund-Nilsson, S., Mayer, I., Huntingford, F.A. (Eds.), *The Biology of the Three-spined Stickleback*. CRC Press, London, pp. 271–318.
- Barber, I., 2013. Sticklebacks as model hosts in ecological and evolutionary parasitology. *Trends Parasitol.* 29, 556–566.
- Barber, I., Arnott, S., 2000. Split-clutch IVF: a technique to examine indirect fitness consequences of mate preferences in sticklebacks. *Behaviour* 137, 1129–1140.
- Barber, I., Nettlehip, S., 2010. From ‘trash fish’ to supermodel: the rise and rise of the three-spined stickleback in evolution and ecology. *Biologist* 57, 15–21.
- Barber, I., Scharsack, J.P., 2010. The three-spined stickleback-*Schistocephalus solidus* system: an experimental model for investigating host-parasite interactions in fish. *Parasitology* 137, 411–424.
- Barber, I., Svensson, P.A., 2003. Effects of experimental *Schistocephalus solidus* infections on growth, morphology and sexual development of female three-spined sticklebacks, *Gasterosteus aculeatus*. *Parasitology* 126, 359–367.
- Barber, I., Walker, P., Svensson, P.A., 2004. Behavioural responses to simulated avian predation in female three spined sticklebacks: the effect of experimental *Schistocephalus solidus* infections. *Behaviour* 141, 1425–1440.
- Barber, I., Wright, H.A., Arnott, S.A., Wootton, R.J., 2008. Growth and energetics in the stickleback-*Schistocephalus* host-parasite system: a review of experimental infection studies. *Behaviour* 145, 647–668.

- Barton, B.A., Schreck, C.B., Sigismondi, L.A., 1986. Multiple acute disturbances evoke cumulative physiological stress responses in juvenile chinook salmon. *T. Am. Fish. Soc.* 115, 245–251.
- Bashirullah, A.K.M., Ahmed, B., 1976. Development of *Camallanus adamsi* Bashirullah, 1974 (Nematoda: Camallanidae) in cyclopoid copepods. *Can. J. Zool.* 54, 2055–2060.
- Beakes, G.W., Glockling, S.L., Sekimoto, S., 2012. The evolutionary phylogeny of the oomycete “fungi”. *Protoplasma* 249, 3–19.
- Behnke, J.M., Gilbert, F.S., Abu-Madi, M.A., Lewis, J.W., 2005. Do the helminth parasites of wood mice interact? *J. Anim. Ecol.* 74, 982–993.
- Behnke, J.M., Eira, C., Rogan, M., Gilbert, F.S., Torres, J., Miquel, J., Lewis, J.W., 2009. Helminth species richness in wild wood mice, *Apodemus sylvaticus*, is enhanced by the presence of the intestinal nematode *Heligmosomoides polygyrus*. *Parasitology* 136, 793–804.
- Belmonte, R., Wang, T., Duncan, G.J., Skaar, I., Mérida, H., Bulone, V., van West, P., Secombes, C.J., 2014. Role of pathogen-derived cell wall carbohydrates and prostaglandin E2 in immune response and suppression of fish immunity by the oomycete *Saprolegnia parasitica*. *Infect. Immun.* 82, 4518–4529.
- Benesh, D.P., 2011. Intensity-dependent host mortality: what can it tell us about larval growth strategies in complex life cycle helminths? *Parasitology* 138, 913–925.
- Benesh, D.P., 2013. Parental effects on the larval performance of a tapeworm in its copepod first host. *J. Evol. Biol.* 26, 1625–1633.
- Benesh, D.P., Hafer, N., 2012. Growth and ontogeny of the tapeworm *Schistocephalus solidus* in its copepod first host affects performance in its stickleback second intermediate host. *Parasit. Vectors* 5, 1–10.
- Benesh, D.P., Kalbe, M., 2016. Experimental parasite community ecology: intraspecific variation in a large tapeworm affects community assembly. *J. Anim. Ecol.* 85, 1004–1013.
- Bernard, D., Six, A., Rigottier-Gois, L., Messiaen, S., Chilmoneczyk, S., Quillet, E., Boudinot, P., Benmansour, A., 2006. Phenotypic and functional similarity of gut intraepithelial and systemic T cells in a teleost fish. *J. Immunol.* 176, 3942–3949.
- Berner, D., Adams, D.C., Grandchamp, A.C., Hendry, A.P., 2008. Natural selection drives patterns of lake–stream divergence in stickleback foraging morphology. *J. Evol. Biol.* 21, 1653–1665.
- Berner, D., Grandchamp, A.-C., Hendry, A.P., 2009. Variable progress toward ecological speciation in parapatry: stickleback across eight lake–stream transitions. *Evolution* 63, 1740–1753.
- Bernhardt, R.R., von Hippel, F.A., Cresko, W.A., 2006. Perchlorate induces hermaphroditism in threespine sticklebacks. *Environ. Toxicol. Chem.* 25, 2087–2096.
- Binz, T., Reusch, T.B., Wedekind, C., Scharer, L., Sternberg, J.M., Milinski, M., 2000. Isolation and characterization of microsatellite loci from the tapeworm *Schistocephalus solidus*. *Mol. Ecol.* 9, 1926–1927.
- Blanco, J.L., Garcia, M.E., 2008. Immune response to fungal infections. *Vet. Immunol. Immunopathol.* 125, 47–70.
- Blasco-Costa, I., Faltýnková, A., Georgieva, S., Skírnisson, K., Scholz, T., Kostadinova, A., 2014. Fish pathogens near the Arctic Circle: molecular, morphological and ecological evidence for unexpected diversity of *Diplostomum* (Digenea: Diplostomidae) in Iceland. *Int. J. Parasitol.* 44, 703–715.
- Bolnick, D.I., Snowberg, L.K., Hirsch, P.E., Lauber, C.L., Org, E., Parks, B., Lusia, A.J., Knight, R., Caporaso, J.G., Svanbäck, R., 2014. Individual diet has sex-dependent effects on vertebrate gut microbiota. *Nat. Commun.* 5, 4500.
- Borg, B., 1982. Seasonal effects of photoperiod and temperature on spermatogenesis and male secondary sexual characters in the three-spined stickleback, *Gasterosteus aculeatus* L. *Can. J. Zool.* 60, 3377–3386.

- Bortz, B.M., Kenny, G.E., Pauley, G.B., Garcia-Ortigoza, E., Anderson, D.P., 1984. The immune response in immunized and naturally infected rainbow trout (*Salmon gairneri*) to *Diplostomum spathaceum* as detected by enzyme-linked immunosorbent assay (ELISA). *Dev. Comp. Immunol.* 8, 813–822.
- Bower-Shore, C., 1940. An investigation of the common fish louse, *Argulus foliaceus* (Linn.). *Parasitology* 32, 361–371.
- Brabec, J., Kostadinova, A., Scholz, T., Littlewood, D.T.J., 2015. Complete mitochondrial genomes and nuclear ribosomal RNA operons of two species of *Diplostomum* (Platyhelminthes: Trematoda): a molecular resource for taxonomy and molecular epidemiology of important fish pathogens. *Parasit. Vectors* 8, 336.
- Brassard, P., Rau, M.E., Curtis, M.A., 1982. Infection dynamics of *Diplostomum spathaceum* cercariae and parasite-induced mortality of fish hosts. *Parasitology* 85, 489–493.
- Brown, M., Hablützel, P., Friberg, I.M., Thomason, A.G., Stewart, A., Pachebat, J.A., Jackson, J.A., 2016. Seasonal immunoregulation in a naturally-occurring vertebrate. *BMC Genomics* 17, 1–18.
- Brungs, W., 1973. Effects of residual chlorine on aquatic life. *J. Water Control Fed.* 45, 2180–2193.
- Bruno, D., Wood, B., 1999. *Saprolegnia* and other oomycetes. In: Woo, P., Bruno, D. (Eds.), *Fish Diseases and Disorders: Viral, Bacterial and Fungal Infections*. CABI Publishing, Wallingford, Oxon, United Kingdom, pp. 599–659.
- Buchmann, K., 1998. Binding and lethal effect of complement from *Oncorhynchus mykiss* on *Gyrodactylus derjavini* (Platyhelminthes: Monogenea). *Dis. Aquat. Organ.* 32, 195–200.
- Buchmann, K., Bresciani, J., 1997. Microenvironment of *Gyrodactylus derjavini* on rainbow trout *Oncorhynchus mykiss*: association between mucous cell density in skin and site selection. *Parasitol. Res.* 84, 17–24.
- Buchmann, K., Kristensson, R.T., 2003. Efficacy of sodium percarbonate and formaldehyde bath treatments against *Gyrodactylus derjavini* infestations of rainbow trout. *N. Am. J. Aquacult.* 65, 25–27.
- Buchmann, K., Uldal, A., 1997. *Gyrodactylus derjavini* infections in four salmonids: comparative host susceptibility and site selection of parasites. *Dis. Aquat. Organ.* 28, 201–209.
- Buchmann, K., Bresciani, J., Jappe, C., 2004. Effects of formalin treatment on epithelial structure and mucous cell densities in rainbow trout, *Oncorhynchus mykiss* (Walbaum), skin. *J. Fish. Dis.* 27, 99–104.
- Cable, J., 2011. Poeciliid parasites. In: Evans, J.P., Pilastro, A., Schlupp, I. (Eds.), *Ecology & Evolution of Poeciliid Fishes*. Chicago University Press, Chicago, pp. 82–94.
- Cable, J., van Oosterhout, C., 2007. The role of innate and acquired resistance in two natural populations of guppies (*Poecilia reticulata*) infected with the ectoparasite *Gyrodactylus turnbulli*. *Biol. J. Linn. Soc.* 90, 647–655.
- Cable, J., Harris, P.D., Bakke, T.A., 2000. Population growth of *Gyrodactylus salaris* (Monogenea) on Norwegian and Baltic Atlantic salmon (*Salmo salar*) stocks. *Parasitology* 121, 621–629.
- Cable, J., Tinsley, R.C., Harris, P.D., 2002a. Survival, feeding and embryo development of *Gyrodactylus gasterostei* (Monogenea: Gyrodactylidae). *Parasitology* 124, 53–68.
- Cable, J., Scott, E.C.G., Tinsley, R.C., Harris, P.D., 2002b. Behavior favoring transmission in the viviparous monogenean *Gyrodactylus turnbulli*. *J. Parasitol.* 88, 183–184.
- Campana-Rouget, Y., 1961. Remarques sur le cycle évolutif de *Camallanus lacustris* (Zoega, 1776) et la phylogénie des Camallanidae. *Ann. Parasitol. Hum. Comp.* 36, 425–434.
- Cardeilhac, P.T., Whitaker, B.R., 1988. Copper treatments: uses and precautions. *Vet. Clin. North Am. Small Anim. Pract.* 18, 435–448.
- Cecile, P.-C., Johan, F.D.J., Romestand, B., 2000. Ribosomal DNA sequences of *Glugea anomala*, *G. stephani*, *G. americanus* and *Spraguea lophii* (Microsporidia): phylogenetic reconstruction. *Dis. Aquat. Organ.* 40, 125–129.

- Chappell, L., Hardie, L., Secombes, C., 1994. Diplostomiasis: the disease and host-parasite interactions. In: Pike, A.W., Lewis, J.W. (Eds.), *Parasitic Diseases of Fish*. Samara Publishing Ltd, Dyfed, UK, pp. 59–86.
- Chappell, L.H., 1969. Competitive exclusion between two intestinal parasites of the three-spined stickleback, *Gasterosteus aculeatus* L. *J. Parasitol.* 55, 775–778.
- Chatton, E., 1920. Un complexe xéno-parasitaire morphologique et physiologique *Neresheimeria paradoxa* chez *Fritillaria pellucida*. *C. R. Acad. Sci.* 171, 55–57.
- Chinabut, S., Limsuwan, C., Tonguthai, K., Pungkachonboon, T., 1988. Toxic and sublethal effect of formalin on freshwater fishes (Online). Available: <http://www.fao.org/3/contents/338a072b-85be-5a3b-952e-5f1747c2c38e/AC278E00.htm>.
- Chubb, J.C., 1982. Seasonal occurrence of helminths in freshwater fishes Part IV. Adult Cestoda, Nematoda and Acanthocephala. In: Lumsden, W.H.R., Muller, R., Baker, J.R. (Eds.), *Adv. Parasitol.* Academic Press, London, pp. 129–138.
- Claire, M., Holland, H., Lambris, J.D., 2002. The complement system in teleosts. *Fish. Shellfish Immun.* 12, 399–420.
- Clarke, A., 1954. Studies on the life cycle of the pseudophyllidean cestode *Schistocephalus solidus*. *J. Zool.* 124, 257–302.
- Collymore, C., White, J.R., Lieggi, C., 2013. *Trichodina xenopodus*, a ciliated protozoan, in a laboratory-maintained *Xenopus laevis*. *Comp. Med.* 63, 310–312.
- Colosimo, P.F., Hosemann, K.E., Balabhadra, S., Villarreal, G., Dickson, M., Grimwood, J., Schmutz, J., Myers, R.M., Schluter, D., Kingsley, D.M., 2005. Widespread parallel evolution in sticklebacks by repeated fixation of ectodysplasin alleles. *Science* 307, 1928–1933.
- Correa-Oliveira, R., Golgher, D.B., Oliveira, G.C., Carvalho, O.S., Massara, C.L., Caldas, I.R., Colley, D.G., Gazzinelli, G., 2002. Infection with *Schistosoma mansoni* correlates with altered immune responses to *Ascaris lumbricoides* and hookworm. *Acta Trop.* 83, 123–132.
- Cresko, W.A., Amores, A., Wilson, C., Murphy, J., Currey, M., Phillips, P., Bell, M.A., Kimmel, C.B., Postlethwait, J.H., 2004. Parallel genetic basis for repeated evolution of armor loss in Alaskan threespine stickleback populations. *Proc. Natl. Acad. Sci. U.S.A.* 101, 6050–6055.
- Dalgaard, M.B., Nielsen, C.V., Buchmann, K., 2003. Comparative susceptibility of two races of *Salmo salar* (Baltic Lule river and Atlantic Conon river strains) to infection with *Gyrodactylus salaris*. *Dis. Aquat. Organ.* 53, 173–176.
- de Bruijn, I., Belmonte, R., Anderson, V.L., Saraiva, M., Wang, T., van West, P., Secombes, C.J., 2012. Immune gene expression in trout cell lines infected with the fish pathogenic oomycete *Saprolegnia parasitica*. *Dev. Comp. Immunol.* 38, 44–54.
- De, N.C., 1999. On the development and life cycle of *Camallanus anabantis* (Nematoda: Camallanidae), a parasite of the climbing perch, *Anabas testudineus*. *Folia Parasitol.* 46, 205–215.
- de Rooij, J., Harris, P.D., MacColl, A.D., 2011. Divergent resistance to a monogenean flatworm among three spined stickleback populations. *Funct. Ecol.* 25, 217–226.
- Dezfuli, B.S., Giari, L., Simoni, E., Shinn, A.P., Bosi, G., 2004. Immunohistochemistry, histopathology and ultrastructure of *Gasterosteus aculeatus* tissues infected with *Glugea anomala*. *Dis. Aquat. Organ.* 58, 193–202.
- Dittmar, J., Janssen, H., Kuske, A., Kurtz, J., Schar sack, J.P., 2014. Heat and immunity: an experimental heat wave alters immune functions in three-spined sticklebacks (*Gasterosteus aculeatus*). *J. Anim. Ecol.* 83, 744–757.
- Dörücü, M., Wilson, D., Barber, I., 2007. Differences in adult egg output of *Schistocephalus solidus* from singly- and multiply-infected sticklebacks. *J. Parasitol.* 93, 1521–1523.
- Dubinina, M.N., 1966. Tapeworms (Cestoda, Ligulidae) of the Fauna of the USSR. (Remnetsy (Cestoda, Lingulidae) Fauny SSSR). Nauka Publishers, Moscow, p. 320.



- Eizaguirre, C., Yeates, S.E., Lenz, T.L., Kalbe, M., Milinski, M., 2009. MHC-based mate choice combines good genes and maintenance of MHC polymorphism. *Mol. Ecol.* 18, 3316–3329.
- Eizaguirre, C., Lenz, T.L., Sommerfeld, R.D., Harrod, C., Kalbe, M., Milinski, M., 2011. Parasite diversity, patterns of MHC II variation and olfactory based mate choice in diverging three-spined stickleback ecotypes. *Evol. Ecol.* 25, 605–622.
- Eizaguirre, C., Lenz, T.L., Kalbe, M., Milinski, M., 2012a. Divergent selection on locally adapted major histocompatibility complex immune genes experimentally proven in the field. *Ecol. Lett.* 15, 723–731.
- Eizaguirre, C., Lenz, T.L., Kalbe, M., Milinski, M., 2012b. Rapid and adaptive evolution of MHC genes under parasite selection in experimental vertebrate populations. *Nat. Commun.* 3, 621.
- El-Naggar, M.M., El-Naggar, A., Kearns, G.C., 2004. Swimming in *Gyrodactylus rhyssali* (Monogenea, Gyrodactylidae) from the Nile catfish, *Clarias gariepinus*. *Acta Parasitol.* 49, 102–107.
- Erasmus, D.A., 1959. The migration of *Cercaria X* Baylis (Strigeida) within the fish intermediate host. *Parasitology* 49, 173–190.
- Ernst, I., Whittington, I., 2001. Experimental susceptibility of some reef fish species to *Benedenia lutjani* (Monogenea: Capsalidae), a parasite of *Lutjanus carponotatus* (Pisces: Lutjanidae). *Parasitol. Res.* 87, 345–348.
- Faltýnková, A., Georgieva, S., Kostadinova, A., Blasco-Costa, I., Scholz, T., Skírnisson, K., 2014. *Diplostomum* von Nordmann, 1832 (Digenea: Diplostomidae) in the sub-Arctic: descriptions of the larval stages of six species discovered recently in Iceland. *Syst. Parasitol.* 89, 195–213.
- FAO, 2016. World review. The State of World Fisheries and Aquaculture. Food and Agriculture Organization of the United Nations, Rome, pp. 1–102.
- Fast, M.D., Muise, D.M., Easy, R.E., Ross, N.W., Johnson, S.C., 2006a. The effects of *Lepeophtheirus salmonis* infections on the stress response and immunological status of Atlantic salmon (*Salmo salar*). *Fish. Shellfish Immun.* 21, 228–241.
- Fast, M.D., Ross, N.W., Muise, D.M., Johnson, S.C., 2006b. Differential gene expression in Atlantic salmon infected with *Lepeophtheirus salmonis*. *J. Aquat. Anim. Health* 18, 116–127.
- Ferguson, J.A., Watral, V., Schwindt, A.R., Kent, M.L., 2007. Spores of two fish microsporidia (*Pseudoloma neurophilia* and *Glugea anomala*) are highly resistant to chlorine. *Dis. Aquat. Organ.* 76, 205–214.
- Feulner, P.G.D., Chain, F.J.J., Panchal, M., Huang, Y., Eizaguirre, C., Kalbe, M., Lenz, T.L., Samonte, I.E., Stoll, M., Bornberg-Bauer, E., Reusch, T.B.H., Milinski, M., 2015. Genomics of divergence along a continuum of parapatric population differentiation. *PLoS Genet.* 11, e1004966.
- Figueras, A., Novoa, B., Santarém, M.M., Martínez, E., Álvarez, J.M., Toranzo, A.E., Dyková, I., 1992. *Tetramicra brevifilum*, a potential threat to farmed turbot *Scophthalmus maximus*. *Dis. Aquat. Organ.* 14, 127–135.
- Finlay, J., 1978. Disinfectants in fish farming. *Aquacult. Res.* 9, 18–21.
- Fleming, F.M., Brooker, S., Geiger, S.M., Caldas, I.R., Correa-Oliveira, R., Hotez, P.J., Bethony, J.M., 2006. Synergistic associations between hookworm and other helminth species in a rural community in Brazil. *Trop. Med. Int. Health* 11, 56–64.
- Forlenza, M., Walker, P.D., Vries, B.J.D., Wendelaar Bonga, E.S., Wiegertjes, G.F., 2008. Transcriptional analysis of the common carp (*Cyprinus carpio* L.) immune response to the fish louse *Argulus japonicus* Thiele (Crustacea: Branchiura). *Fish. Shellfish Immun.* 25, 76–83.
- Forn-Cuni, G., Reis, E.S., Dios, S., Posada, D., Lambris, J.D., Figueras, A., Novoa, B., 2014. The evolution and appearance of C3 duplications in fish originate an exclusive teleost C3 gene form with anti-inflammatory activity. *PLoS One* 9, e99673.



- Fornerisa, G., Bellardib, S., Palmegianoc, G.B., Sarogliad, M., Sicuroa, B., Gascoe, L., Zoccaratoc, I., 2003. The use of ozone in trout hatchery to reduce saprolegniasis incidence. *Aquaculture* 221, 157–166.
- Francis-Floyd, R., 1996. Use of Formalin to Control Fish Parasites. University of Florida Cooperative Extension Service, Institute of Food and Agricultural Sciences, EDIS, pp. 1–3.
- Fraser, B.A., Neff, B.D., 2009. Parasite mediated homogenizing selection at the MHC in guppies. *Genetica* 138, 273–278.
- Fraser, B.A., Ramnarine, I.W., Neff, B.D., 2009. Selection at the MHC class IIB locus across guppy (*Poecilia reticulata*) populations. *Heredity* 104, 155–167.
- Fraser, B.A., Ramnarine, I.W., Neff, B.D., 2010. Temporal variation at the MHC class IIB in wild populations of the guppy (*Poecilia reticulata*). *Evolution* 64, 2086–2096.
- Fregeneda Grandes, J.M., Fernández Díez, M., Aller Gancedo, J.M., 2001. Experimental pathogenicity in rainbow trout, *Oncorhynchus mykiss* (Walbaum), of two distinct morphotypes of long-spined *Saprolegnia* isolates obtained from wild brown trout, *Salmo trutta* L., and river water. *J. Fish. Dis.* 24, 351–359.
- Frommen, J.G., Bakker, T.C.M., 2006. Inbreeding avoidance through non-random mating in sticklebacks. *Biol. Lett.* 2, 232–235.
- Fryer, G., 1982. The Parasitic Copepoda and Branchiura of British Freshwater Fishes: A Handbook and Key. F.B.A. Scientific Publications of the Freshwater Biological Association, London, p. 87 p.
- García, L.O., Becker, A.G., Copatti, C.E., Baldisserotto, B., Neto, J.R., 2007. Salt in the food and water as a supportive therapy for *Ichthyophthirius multifiliis* infestation on silver catfish, *Rhamdia quelen*, fingerlings. *J. World Aquacult. Soc.* 38, 1–11.
- Gault, N.F.S., Kllpatrick, D.J., Stewart, M.T., 2002. Biological control of the fish louse in a rainbow trout fishery. *J. Fish. Biol.* 60, 226–237.
- Georgieva, S., Soldánová, M., Pérez-del-Olmo, A., Dangel, D.R., Sitko, J., Sures, B., Kostadinova, A., 2013. Molecular prospecting for European *Diplostomum* (Digenea: Diplostomidae) reveals cryptic diversity. *Int. J. Parasitol.* 43, 57–72.
- Gibson, G., 2005. The synthesis and evolution of a supermodel. *Science* 307, 1890–1891.
- Giesecker, C.M., Serfling, S.G., Reimschuessel, R., 2006. Formalin treatment to reduce mortality associated with *Saprolegnia parasitica* in rainbow trout, *Oncorhynchus mykiss*. *Aquaculture* 253, 120–129.
- Giles, N., 1983. Behavioural effects of the parasite *Schistocephalus solidus* (Cestoda) on an intermediate host, the three-spined stickleback, *Gasterosteus aculeatus*. *Anim. Behav.* 31, 1192–1194.
- Gow, J.L., Peichel, C.L., Taylor, E.B., 2006. Contrasting hybridization rates between sympatric three-spined sticklebacks highlight the fragility of reproductive barriers between evolutionarily young species. *Mol. Ecol.* 15, 739–752.
- Gow, J.L., Peichel, C.L., Taylor, E.B., 2007. Ecological selection against hybrids in natural populations of sympatric threespine sticklebacks. *J. Evol. Biol.* 20, 2173–2180.
- Grosell, M., Blanchard, J., Brix, K.V., Gerdes, R., 2007. Physiology is pivotal for interactions between salinity and acute copper toxicity to fish and invertebrates. *Aquat. Toxicol.* 84, 162–172.
- Guerriero, G., Avino, M., Zhou, Q., Fugelstad, J., Clergeot, P.-H., Bulone, V., 2010. Chitin syntheses from *Saprolegnia* are involved in tip growth and represent a potential target for anti-oomycete drugs. *PLoS Pathog.* 6, e1001070.
- Haase, D., Rieger, J.K., Witten, A., Stoll, M., Bornberg-Bauer, E., Kalbe, M., Reusch, T.B.H., 2014. Specific gene expression responses to parasite genotypes reveal redundancy of innate immunity in vertebrates. *PLoS One* 9, e108001.
- Haase, D., Rieger, J.K., Witten, A., Stoll, M., Bornberg-Bauer, E., Kalbe, M., Schmidt-Drewello, A., Scharsack, J.P., Reusch, T.B.H., 2016. Comparative transcriptomics

of stickleback immune gene responses upon infection by two helminth parasites, *Diplostomum pseudospathaceum* and *Schistocephalus solidus*. *Zoology* 119, 307–313.

- Hablützel, P.I., Brown, M., Friberg, I.M., Jackson, J.A., 2016. Changing expression of vertebrate immunity genes in an anthropogenic environment: a controlled experiment. *BMC Evol. Biol.* 16, 175.
- Hafer, N., Milinski, M., 2016. Inter- and intraspecific conflicts between parasites over host manipulation. *Proc. R. Soc. Lond. B* 283, 1–7.
- Hahn, C., Fromm, B., Bachmann, L., 2014. Comparative genomics of flatworms (Platyhelminthes) reveals shared genomic features of ecto- and endoparasitic neodermata. *Genome Biol. Evol.* 6, 1105–1117.
- Hakalahti, T., Häkkinen, H., Valtonen, E.T., 2004. Ectoparasitic *Argulus coregoni* (Crustacea: Branchiura) hedge their bets – studies on egg hatching dynamics. *Oikos* 107, 295–302.
- Hammarén, M.M., Oksanen, K.E., Nisula, H.M., Luukinen, B.V., Pesu, M., Rämetsä, M., Parikka, M., 2014. Adequate Th2-type response associates with restricted bacterial growth in latent mycobacterial infection of zebrafish. *PLoS Pathog.* 10, e1004190.
- Hammerschmidt, K., Kurtz, J., 2005. Evolutionary implications of the adaptation to different immune systems in a parasite with a complex life cycle. *Proc. R. Soc. Lond. B* 272, 20053241.
- Hansen, H., Bachmann, L., Bakke, T.A., 2003. Mitochondrial DNA variation of *Gyrodactylus* spp. (Monogenea, Gyrodactylidae) populations infecting Atlantic salmon, grayling, and rainbow trout in Norway and Sweden. *Int. J. Parasitol.* 33, 1471–1478.
- Harnish, R.A., Colotelo, A.H., Brown, R.S., 2011. A review of polymer-based water conditioners for reduction of handling-related injury. *Rev. Fish Biol. Fish.* 21, 43–49.
- Harris, P.D., . report Studies on the Biology of the Gyrodactyloidea (Monogenea). Unpublished PhD thesis. Westfield College, London, p. 317.
- Harris, P.D., Soleng, A., Bakke, T.A., 1998. Killing of *Gyrodactylus salaris* (Platyhelminthes, Monogenea) mediated by host complement. *Parasitology* 117, 137–143.
- Harris, P.D., Shinn, A.P., Cable, J., Bakke, T.A., BRON, J.E., 2008. GyroDb: gyrodactylid monogeneans on the web. *Trends Parasitol.* 24, 109–111.
- Harrison, A.J., Gault, N.F.S., Dick, J.T.A., 2006. Seasonal and vertical patterns of egg-laying by the freshwater fish louse *Argulus foliaceus* (Crustacea: Branchiura). *Dis. Aquat. Organ.* 68, 167–173.
- Hatai, K., Hoshiai, G.-I., 1994. Pathogenicity of *Saprolegnia parasitica* coker. In: Muller, G.J. (Ed.), *Salmon Saprolegniasis*. Bonneville Power Administration. U.S. Department of Energy, Portland, Oregon, pp. 87–98.
- Haverkort, A.J., Boonekamp, P.M., Hutten, R., Jacobsen, E., Lotz, L.A.P., Kessel, G.J.T., Visser, R.G.F., Vossen, E.A.G.V.D., 2008. Societal costs of late blight in potato and prospects of durable resistance through cisgenic modification. *Potato Res.* 51, 47–57.
- Hébert, F.O., Grambauer, S., Barber, I., Landry, C.R., Aubin-Horth, N., 2016. Transcriptome sequences spanning key developmental states as a resource for the study of the cestode *Schistocephalus solidus*, a threespine stickleback parasite. *GigaScience* 5, 1–9.
- Heins, D.C., Baker, J.A., Martin, H.C., 2002. The “crowding effect” in the cestode *Schistocephalus solidus*: density-dependent effects on plerocercoid size and infectivity. *J. Parasitol.* 88, 302–307.
- Heins, D.C., Baker, J.A., 2008. The stickleback-*Schistocephalus* host-parasite system as a model for understanding the effect of a macroparasite on host reproduction. *Behaviour* 145, 625–645.
- Hendry, A.P., Taylor, E.B., McPhail, J.D., 2002. Adaptive divergence and the balance between selection and gene flow: lake and stream stickleback in the misty system. *Evolution* 56, 1199–1216.

- Hibbeler, S., Scharsack, J.P., Becker, S., 2008. Housekeeping genes for quantitative expression studies in the three-spined stickleback *Gasterosteus aculeatus*. *BMC Mol. Biol.* 9, 1–10.
- Hoegg, S., Brinkmann, H., Taylor, J.S., Meyer, A., 2004. Phylogenetic timing of the fish-specific genome duplication correlates with the diversification of teleost fish. *J. Mol. Evol.* 59, 190–203.
- Hoffman, G.L., 1977. Argulus, a branchiuran parasite of freshwater fishes. *WFS* 49, 1–9.
- Holmes, E., JV, Li, Athanasiou, T., Ashrafian, H., Nicholson, J.K., 2011. Understanding the role of gut microbiome–host metabolic signal disruption in health and disease. *Trends Microbiol.* 19, 349–359.
- Hoole, D., Bucke, D., Burgess, P., Wellby, I., 2001. *Diseases of Carp and Other Cyprinid Fishes*. Blackwell Publishers, Oxford, p. 253.
- Hopkins, C.A., Smyth, J.D., 1951. Notes on the morphology and life history of *Schistocephalus solidus* (Cestoda: Diphylobothridae). *Parasitology* 41, 283–291.
- Hopkins, K., Moss, B.R., Gill, A.B., 2011. Increased ambient temperature alters the parental care behaviour and reproductive success of the three-spined stickleback (*Gasterosteus aculeatus*). *Environ. Biol. Fish* 90, 121–129.
- Hubbard, T.J.P., Aken, B.L., Beal, K., Ballester, B., Caccamo, M., Chen, Y., Clarke, L., Coates, G., Cunningham, F., Cutts, T., Down, T., dyer, S.C., Fitzgerald, S., Fernandez-Banet, J., Graf, S., Haider, S., Hammond, M., Herrero, J., Holland, R., Howe, K., Howe, K., Johnson, N., Kahari, A., Keefe, D., Kokocinski, F., Kulesha, E., Lawson, D., Longden, I., Melsopp, C., Megy, K., Meidl, P., Overduin, B., Parker, A., Prlc, A., Rice, S., Rios, D., Schuster, M., Sealy, I., Severin, J., Slater, G., Smedley, D., Spudich, G., Trevanion, S., Vilella, A., Vogel, J., White, S., Wood, M., Cox, T., Curwen, V., Durbin, R., Fernandez-Suarez, X.M., Flicek, P., Kasprzyk, A., Proctor, G., Searle, S., Smith, J., Ureta-Vidal, A., Birney, E., 2007. Ensembl 2007. *Nucleic Acids Res.* 35, D610–D617.
- Hussein, M.M.A., Hatai, K., 2002. Pathogenicity of *Saprolegnia* species associated with outbreaks of salmonid saprolegniosis in Japan. *Fish. Sci.* 68, 1067–1072.
- Jackson, J.A., Friberg, I.M., Little, S., Bradley, J.E., 2009. Review series on helminths, immune modulation and the hygiene hypothesis: immunity against helminths and immunological phenomena in modern human populations: coevolutionary legacies? *Immunology* 126, 18–27.
- Jackson, J.A., Hall, A.J., Friberg, I.M., Ralli, C., Lowe, A., Zawadzka, M., Turner, A.K., Stewart, A., Birtles, R.J., Paterson, S., Bradley, J.E., Begon, M., 2014. An immunological marker of tolerance to infection in wild rodents. *PLoS Biol.* 12, e1001901.
- Jakobsen, P.J., Scharsack, J.P., Hammerschmidt, K., Deines, P., Kalbe, M., Milinski, M., 2012. In vitro transition of *Schistocephalus solidus* (Cestoda) from coracidium to proceroid and from proceroid to plerocercoid. *Exp. Parasitol.* 130, 267–273.
- Jakobsson, S., Borg, B., Haux, C., Hyllner, S.J., 1999. An 11-ketotestosterone induced kidney-secreted protein: the nest building glue from male three-spined stickleback, *Gasterosteus aculeatus*. *Fish. Physiol. Biochem.* 20, 79–85.
- Janssen, K., Chavanne, H., Berentsen, P., Komen, H., 2016. Impact of selective breeding on European aquaculture. *Aquaculture*. <http://dx.doi.org/10.1016/j.aquaculture.2016.03.012>.
- Jeney, Z., Jeney, G., 1995. Recent achievements in studies on diseases of common carp (*Cyprinus carpio* L.). *Aquaculture* 129, 397–420.
- Jiang, R.H.Y., de Bruijn, I., Haas, B.J., Belmonte, R., Löbach, L., Christie, J., van den Ackerveken, G., Bottin, A., Bulone, V., Díaz-Moreno, S.M., Dumas, B., Fan, L., Gaulin, E., Govers, F., Grenville-Briggs, L.J., Horner, N.R., Levin, J.Z., Mammella, M., Meijer, H.J.G., Morris, P., Nusbaum, C., Oome, S., Phillips, A.J., van Rooyen, D., Rzeszutek, E., Saraiva, M., Secombes, C.J., Seidl, M.F., Snel, B.,

- Stassen, J.H.M., Sykes, S., Tripathy, S., van den Berg, H., Vega-Arreguin, J.C., Wawra, S., Young, S.K., Zeng, Q., Dieguez-Uribeondo, J., Russ, C., Tyler, B.M., van West, P., 2013. Distinctive expansion of potential virulence genes in the genome of the oomycete fish pathogen *Saprolegnia parasitica*. *PLoS Genet.* 9, e1003272.
- Johnson, C.H., Marshall, M.M., Demaria, L.A., Moffet, J.M., Korich, D.G., 2003. Chlorine inactivation of spores of *Encephalitozoon* spp. *Appl. Environ. Microbiol.* 69, 1325–1326.
- Jones, F.C., Grabherr, M.G., Chan, Y.F., Russell, P., Mauceli, E., Johnson, J., Swofford, R., Pirun, M., Zody, M.C., White, S., Birney, E., Searle, S., Schmutz, J., Grimwood, J., Dickson, M.C., Myers, R.M., Miller, C.T., Summers, B.R., Knecht, A.K., Brady, S.D., Zhang, H., Pollen, A.A., Howes, T., Amemiya, C., Lander, E.S., di Palma, F., Lindblad-Toh, K., Kingsley, D.M., 2012. The genomic basis of adaptive evolution in threespine sticklebacks. *Nature* 484, 55–61.
- Jordan, C.M., Garside, E.T., 1972. Upper lethal temperatures of threespine stickleback, *Gasterosteus aculeatus* (L.), in relation to thermal and osmotic acclimation, ambient salinity, and size. *Can. J. Zool.* 50, 1405–1411.
- Kalatehajari, P., Yousefian, M., Khalilzadeh, M.A., 2015. Assessment of antifungal effects of copper nanoparticles on the growth of the fungus *Saprolegnia* sp. on white fish (*Rutilus frisii kutum*) eggs. *Egypt. J. Aquat. Res.* 41, 303–306.
- Kalbe, M., Wegner, K.M., Reusch, T.B.H., 2002. Dispersion patterns of parasites in 0+ year three-spined sticklebacks: a cross population comparison. *J. Fish. Biol.* 60, 1529–1542.
- Kalbe, M., Kurtz, J., 2006. Local differences in immunocompetence reflect resistance of sticklebacks against the eye fluke *Diplostomum pseudospathaceum*. *Parasitology* 132, 105–116.
- Kalbe, M., Eizaguirre, C., Scharsack, J.P., Jakobsen, P.J., 2016. Reciprocal cross infection of sticklebacks with the diphyllbothriidean cestode *Schistocephalus solidus* reveals consistent population differences in parasite growth and host resistance. *Parasit. Vectors* 9, 130.
- Kales, S.C., Dewitte-Orr, S.J., Bols, N.C., Dixon, B., 2007. Response of the rainbow trout monocyte/macrophage cell line, RTS11 to the water molds *Achlya* and *Saprolegnia*. *Mol. Immunol.* 44, 2303–2314.
- Kania, P.W., Evensen, O., Larsen, T.B., Buchmann, K., 2010. Molecular and immunohistochemical studies on epidermal responses in Atlantic salmon *Salmo salar* L. induced by *Gyrodactylus salaris* Malmberg, 1957. *J. Helminthol.* 84, 166–172.
- Kar, B., Mohanty, J., Hemaprasanth, K.P., Sahoo, P.K., 2015. The immune response in rohu, *Labeo rohita* (Actinopterygii: Cyprinidae) to *Argulus siamensis* (Branchiura: Argulidae) infection: kinetics of immune gene expression and innate immune response. *Aquacult. Res.* 46, 1292–1308.
- Karvonen, A., Cheng, G.-H., Seppälä, O., Valtonen, E., 2006a. Intestinal distribution and fecundity of two species of *Diplostomum* parasites in definitive hosts. *Parasitology* 132, 357–362.
- Karvonen, A., Savolainen, M., Seppälä, O., Valtonen, E.T., 2006b. Dynamics of *Diplostomum spathaceum* infection in snail hosts at a fish farm. *Parasitol. Res.* 99, 341–345.
- Karvonen, A., Terho, P., Seppälä, O., Jokela, J., Valtonen, E.T., 2006c. Ecological divergence of closely related *Diplostomum* (Trematoda) parasites. *Parasitology* 133, 229–235.
- Karvonen, A., Rellstab, C., Louhi, K.R., Jokela, J., 2012. Synchronous attack is advantageous: mixed genotype infections lead to higher infection success in trematode parasites. *Proc. R. Soc. Lond. B* 279, 171–176.
- Karvonen, A., Kristjánsson, B.K., Skúlason, S., Lanki, M., Rellstab, C., Jokela, J., 2013. Water temperature, not fish morph, determines parasite infections of sympatric Icelandic threespine sticklebacks (*Gasterosteus aculeatus*). *Ecol. Evol.* 3, 1507–1517.
- Karvonen, A., Lucek, K., Marques, D.A., Seehausen, O., 2015. Divergent macroparasite infections in parapatric swiss lake-stream pairs of threespine stickleback *Gasterosteus aculeatus*. *PLoS ONE* 10, e0130579.

- Katsiadaki, I., Scott, A.P., Mayer, I., 2002a. The potential of the three-spined stickleback (*Gasterosteus aculeatus* L.) as a combined biomarker for oestrogens and androgens in European waters. *Mar. Environ. Res.* 54, 725–728.
- Katsiadaki, I., Scott, A.P., Hurst, M.R., Matthiessen, P., Mayer, I., 2002b. Detection of environmental androgens: a novel method based on enzyme-linked immunosorbent assay of spiggin, the stickleback (*Gasterosteus aculeatus*) glue protein. *Environ. Toxicol. Chem.* 21, 1946–1954.
- Kaufmann, J., Lenz, T.L., Milinski, M., Eizaguirre, C., 2014. Experimental parasite infection reveals costs and benefits of paternal effects. *Ecol. Lett.* 17, 1409–1417.
- Kaufmann, J., Eizaguirre, C., Milinski, M., Lenz, T.L., 2015. The contribution of post-copulatory mechanisms to incipient ecological speciation in sticklebacks. *Biol. Lett.* 11, 20140933.
- Kearn, G.C., 2004. The common fish louse – *Argulus*. In: *Leeches, Lice and Lampreys. A Natural History of Skin and Gill Parasites of Fishes*. Springer, Dordrecht, pp. 237–264.
- Khodabandeh, S., Abtahi, B., 2006. Effects of sodium chloride, formalin and iodine on the hatching success of common carp, *Cyprinus carpio*, eggs. *J. Appl. Ichthyol.* 22, 54–56.
- Kim, S.-Y., Velando, A., 2015. Phenotypic integration between antipredator behavior and camouflage pattern in juvenile sticklebacks. *Evolution* 69, 830–838.
- Kingsley, D., 2003. Sequencing the genome of threespine sticklebacks (*Gasterosteus aculeatus*). *Natl. Hum. Genome Res. Inst. White Pap.* 1–15.
- Knowles, S.C.L., Fenton, A., Petchey, O.L., Jones, T.R., Barber, R., Pedersen, A.B., 2013. Stability of within-host–parasite communities in a wild mammal system. *Proc. R. Soc. Lond. B* 280, 1–9.
- Konijnendijk, N., Raeymaekers, J.A., Vandeuren, S., Jacquemin, L., Volckaert, F.A., 2013. Testing for local adaptation in the *Gasterosteus-Gyrodactylus* host–parasite system. *Evol. Ecol. Res.* 15, 489–502.
- Krobbach, C.K., Kalbe, M., Kurtz, J., Scharsack, J.P., 2007. Infectivity of two nematode parasites, *Camallanus lacustris* and *Anguillicola crassus*, in a paratenic host, the three-spined stickleback *Gasterosteus aculeatus*. *Dis. Aquat. Organ.* 74, 119–126.
- Kurtz, J., van der Veen, I.T., Christen, M., 2002. Fluorescent vital labeling to track cestodes in a copepod intermediate host. *Exp. Parasitol.* 100, 36–43.
- Kurtz, J., Kalbe, M., Aeschlimann, P.B., Haberli, M.A., Wegner, K.M., Reusch, T.B.H., Milinski, M., 2004. Major histocompatibility complex diversity influences parasite resistance and innate immunity in sticklebacks. *Proc. R. Soc. Lond. B* 271, 197–204.
- Labauve, A.E., Wargo, M.J., 2012. Growth and laboratory maintenance of *Pseudomonas aeruginosa*. *Curr. Protoc. Microbiol.* Chapter 6, Unit-6E.1.
- Lackey, A.C.R., Boughman, J.W., 2016. Evolution of reproductive isolation in stickleback fish. *Evolution*. <http://dx.doi.org/10.1111/evo.13114>.
- Lefébure, R., Larsson, S., Byström, P., 2011. A temperature-dependent growth model for the three-spined stickleback *Gasterosteus aculeatus*. *J. Fish. Biol.* 79, 1815–1827.
- Lello, J., Boag, B., Fenton, A., Stevenson, I.R., Hudson, P.J., 2004. Competition and mutualism among the gut helminths of a mammalian host. *Nature* 428, 840–844.
- Lenz, T.L., Eizaguirre, C., Rotter, B., Kalbe, M., Milinski, M., 2013. Exploring local immunological adaptation of two stickleback ecotypes by experimental infection and transcriptome-wide digital gene expression analysis. *Mol. Ecol.* 22, 774–786.
- Leslie, M., 2010. Biomedical research. Immunology uncaged. *Science* 327, 1573.
- Leteux, F., Meyer, F.P., 1972. Mixtures of malachite green and formalin for controlling ichthyophthirius and other protozoan parasites of fish. *Prog. Fish. Cult.* 34, 21–26.
- Lieschke, G.J., Currie, P.D., 2007. Animal models of human disease: zebrafish swim into view. *Nat. Rev. Genet.* 8, 353–367.

- Linaker, M.L., Hansen, H., Mo, T.A., Moen, A., Jensen, B.B., 2012. The surveillance and control programme for *Gyrodactylus salaris* in Atlantic salmon and rainbow trout in Norway 2012. Surveillance and control programs for terrestrial and aquatic animals in Norway. Annu. Rep. 2012, 1–7.
- Lindenstrøm, T., Buchmann, K., Secombes, C.J., 2003. *Gyrodactylus derjavini* infection elicits IL-1 $\beta$  expression in rainbow trout skin. Fish. Shellfish Immun. 15, 107–115.
- Lindenstrøm, T., Secombes, C.J., Buchmann, K., 2004. Expression of immune response genes in rainbow trout skin induced by *Gyrodactylus derjavini* infections. Immunopathology 97, 137–148.
- Lindenstrøm, T., Sigh, J., Dalgaard, M.B., Buchmann, K., 2006. Skin expression of IL-1b in East Atlantic salmon, *Salmo salar* L., highly susceptible to *Gyrodactylus salaris* infection is enhanced compared to a low susceptibility Baltic stock. J. Fish. Dis. 29, 123–128.
- Little, T.J., Perutz, M., Palmer, M., Crossan, C., Braithwaite, V.A., 2008. Male three-spined sticklebacks *Gasterosteus aculeatus* make antibiotic nests: a novel form of parental protection? J. Fish. Biol. 73, 2380–2389.
- Lively, C.M., 2005. Evolution of virulence: coinfection and propagule production in spore-producing parasites. BMC Evol. Biol. 5, 64.
- Locke, S.A., McLaughlin, J.D., Dayanandan, S., Marcogliese, D.J., 2010. Diversity and specificity in *Diplostomum* spp. metacercariae in freshwater fishes revealed by cytochrome c oxidase I and internal transcribed spacer sequences. Int. J. Parasitol. 40, 333–343.
- Lom, J., 1973. The adhesive disc of *Trichodinella epizootica*-ultrastructure and injury to the host tissue. Folia Parasitol. 20, 193–202.
- Lom, J., Noga, E.J., Dyková, I., 1995. Occurrence of a microsporean with characteristics of *Glugea anomala* in ornamental fish of the family Cyprinodontidae. Dis. Aquat. Org. 21, 239–242.
- Lom, J., Dyková, I., 2005. Microsporidian xenomas in fish seen in wider perspective. Folia Parasitol. 52, 69–81.
- Lyholt, H.C.K., Buchmann, K., 1996. *Diplostomum spathaceum*: effects of temperature and light on cercarial shedding and infection of rainbow trout. Dis. Aquat. Organ. 25, 169–173.
- MacColl, A.D., Nagar, A.E., Roij, J., 2013. The evolutionary ecology of dwarfism in three-spined sticklebacks. J. Anim. Ecol. 82, 642–652.
- MacColl, A.D.C., 2009. Parasites may contribute to ‘magic trait’ evolution in the adaptive radiation of three-spined sticklebacks, *Gasterosteus aculeatus* (Gasterosteiformes: Gasterosteidae). Biol. J. Linn. Soc. 96, 425–433.
- MacNab, V., Barber, I., 2012. Some (worms) like it hot: fish parasites grow faster in warmer water, and alter host thermal preferences. Glob. Chang. Biol. 18, 1540–1548.
- MacNab, V., Katsiadaki, I., Tilley, C.A., Barber, I., 2016. Oestrogenic pollutants promote the growth of a parasite in male sticklebacks. Aquat. Toxicol. 174, 92–100.
- Magnadóttir, B., 2006. Innate immunity of fish (overview). Fish. Shellfish Immun. 20, 137–151.
- Marques, D.A., Lucek, K., Meier, J.I., Mwaiko, S., Wagner, C.E., Excoffier, L., Seehausen, O., 2016. Genomics of rapid incipient speciation in sympatric threespine stickleback. PLoS Genet. 12, e1005887.
- Matthews, R.A., 2005. *Ichthyophthirius multifiliis* Fouquet and *Ichthyophthiriosis* in freshwater teleosts. In: Baker, J.R., Muller, R., Rollinson, D. (Eds.), Adv. Parasitol. Academic Press, London, pp. 159–241.
- Mazzi, D., Largiadèr, C.R., Bakker, T.C.M., 2002. Inbreeding and developmental stability in three-spined sticklebacks (*Gasterosteus aculeatus* L.). Heredity 89, 293–299.
- McKinnon, J.S., Rundle, H.D., 2002. Speciation in nature: the threespine stickleback model systems. Trends Ecol. Evol. 17, 480–488.

- McPhail, J.D., 1992. Ecology and evolution of sympatric sticklebacks (*Gasterosteus*): evidence for a species-pair in Paxton lake, Texada Island, British Columbia. *Can. J. Zool.* 70, 361–369.
- Meguid, M.A., Eure, H.E., 1996. Pathobiology associated with the spiruroid nematodes *Camallanus oxycephalus* and *Spinitectus carolini* in the intestine of green sunfish, *Lepomis cyanellus*. *J. Parasitol.* 82, 118–123.
- Mehlis, M., Rick, I.P., Bakker, T.C.M., 2015. Dynamic resource allocation between pre- and postcopulatory episodes of sexual selection determines competitive fertilization success. *Proc. R. Soc. Lond. B* 282, 20151279.
- Meyer, F.P., 1991. Aquaculture disease and health management. *J. Anim. Sci.* 69, 4201–4208.
- Mikheev, V.N., Mikheev, A.V., Pasternak, A.F., Valtonen, E.T., 2000. Light-mediated host searching strategies in a fish ectoparasite, *Argulus foliaceus* L. (Crustacea: Branchiura). *Parasitology* 120, 409–416.
- Mikheev, V.N., Pasternak, A.F., Valtonen, E.T., 2015. Behavioural adaptations of argulid parasites (Crustacea: Branchiura) to major challenges in their life cycle. *Parasit. Vectors* 8, 394.
- Milinski, M., 1984. Parasites determine a predator's optimal feeding strategy. *Behav. Ecol. Sociobiol.* 15, 35–37.
- Milinski, M., 1985. Risk of predation of parasitised sticklebacks (*Gasterosteus aculeatus* L.) under competition for food. *Behaviour* 93, 203–216.
- Milinski, M., 1987. Tit for tat in sticklebacks and the evolution of cooperation. *Nature* 325, 433–435.
- Milinski, M., 1990. Parasites and host decision-making. In: Barnard, C.J., Behnke, J.M. (Eds.), *Parasitism and Host Behaviour*. Taylor, Francis, London, pp. 95–116.
- Milinski, M., 2006. Fitness consequences of selfing and outcrossing in the cestode *Schistocephalus solidus*. *Integr. Comp. Biol.* 46, 373–380.
- Milinski, M., Bakker, T.C., 1990. Female sticklebacks use male coloration in mate choice and hence avoid parasitized males. *Nature* 344, 330–333.
- Miller, N.W., 1998. Immunology of fishes. Leukocytes and their markers. In: Pastoret, P.-P., Griebel, P., Bazin, H., Govaerts, A. (Eds.), *Handbook of Vertebrate Immunology*. Academic Press, London, pp. 3–43.
- Milligan-Myhre, K., Small, C.M., Mittge, E.K., Agarwal, M., Currey, M., Cresko, W.A., Guillemin, K., 2016. Innate immune responses to gut microbiota differ between threespine stickleback populations. *Dis. Models Mech.* 9, 187–198.
- Minor, K.L., Anderson, V.L., Davis, K.S., van den Berg, A.H., Christie, J.S., Löbach, L., Faruk, A.R., Wawra, S., Secombes, C.J., van West, P., 2014. A putative serine protease, SpSsp1, from *Saprolegnia parasitica* is recognised by sera of rainbow trout, *Oncorhynchus mykiss*. *Fungal Biol.* 118, 630–639.
- Miron, D.S., Silva, L.V.F., Golombieski, J.I., Baldisserotto, B., 2003. Efficacy of different salt (NaCl) concentrations in the treatment of *Ichthyophthirius multifiliis*-infected silver catfish, *Rhamdia quelen*, fingerlings. *J. Appl. Aquacult.* 14, 155–161.
- Mohammed, R.S., James, J., Reynolds, M., Williams, C., van Oosterhout, C., Mohammed, A., Ramsubhag, A., Cable, J., 2016. Getting into hot water: sick guppies frequent warmer thermal conditions. *Oecologia* 181, 911–917. <http://dx.doi.org/10.1007/s00442-016-3598-1>.
- Møller, O.S., Olesen, J., Avenant-Oldewage, A., Thomsen, P.F., Glenner, H., 2008. First maxillae suction discs in Branchiura (Crustacea): development and evolution in light of the first molecular phylogeny of Branchiura, Pentastomida, and other "Maxillopoda". *Arthropod Struct. Dev.* 37, 333–346.
- Møller, O.S., 2012. *Argulus foliaceus*. In: Woo, P. (Ed.), *Fish Parasites: Pathobiology and Protection*. CABI, Oxfordshire, UK, pp. 337–346.



- Moravec, F., 1969. On the problem of host specificity, reservoir parasitism and secondary invasions of *Camallanus lacustris* (Zoega, 1776) (Nematoda: Camallanidae). *Helminthologia* 10, 1–4.
- Moravec, F., 1971. On the problem of host specificity, reservoir parasitism and secondary invasions of *Camallanus lacustris* (Nematoda; Camallanidae). *Helminthologia* 10, 107–114.
- Moravec, F., 2013. Parasitica Nematodes of Freshwater Fishes of Europe. Acedemia, Prague, p. 601.
- Morrell, L.J., Hentley, W.T., Wickens, V.J., Wickens, J.B., Rodgers, G.M., 2012. Artificial enhancement of an extended phenotype signal increases investment in courtship by three-spined sticklebacks. *Anim. Behav.* 84, 93–101.
- Morvan, C.L., Troutaud, D., Deschaux, P., 1998. Differential effects of temperature on specific and nonspecific immune defences in fish. *J. Exp. Biol.* 201, 165–168.
- Murphy, K.M., Weaver, C., 2016. *Janeway's Immunobiology*. Garland Science, New York, p. 924.
- Myhr, A.I., Dalmo, R.A., 2005. Introduction of genetic engineering in aquaculture: ecological and ethical implications for science and governance. *Aquaculture* 250, 542–554.
- Near, T.J., Eytan, R.I., Dornburg, A., Kuhn, K.L., Moore, J.A., Davis, M.P., Wainwright, P.C., Friedman, M., Smith, W.L., 2012. Resolution of ray-finned fish phylogeny and timing of diversification. *Proc. Natl. Acad. Sci. U.S.A.* 109, 13698–13703.
- Netea, M.G., Warris, A., van der Meer, J.W., Fenton, M.J., Verver-Janssen, T.J., Jacobs, L.E., Andresen, T., Verweij, P.E., Kullberg, B.J., 2003. *Aspergillus fumigatus* evades immune recognition during germination through loss of toll-like receptor-4-mediated signal transduction. *J. Infect. Dis.* 188, 320–326.
- Netea, M.G., van der Graaf, C., van der Meer, J.W.M., Kullberg, B.J., 2004. Recognition of fungal pathogens by toll-like receptors. *Eur. J. Clin. Microbiol. Infect. Dis.* 23, 672–676.
- Nie, P., Kennedy, C.R., 1991. The population biology of *Camallanus lacustris* (Zoega) in eels, *Anguilla anguilla* (Linnaeus), and their status as its host. *J. Fish. Biol.* 38, 653–661.
- Niederhorn, J.Y., 2006. See no evil, hear no evil, do no evil: the lessons of immune privilege. *Nat. Immunol.* 7, 354–359.
- Nielsen, C.V., Buchmann, K., 2000. Prolonged in vitro cultivation of *Ichthyophthirius multifiliis* using an EPC cell line as substrate. *Dis. Aquat. Organ.* 42, 215–219.
- Niewiadomska, K., 1986. Verification of the life-cycles of *Diplostomum spathaceum* (Rudolphi, 1819) and *D. pseudospathaceum* Niewiadomska, 1984 (Trematoda, Diplostomidae). *Syst. Parasitol.* 8, 23–31.
- Nishimura, N., Heins, D.C., Andersen, R.O., Barber, I., Cresko, W.A., 2011. Distinct lineages of *Schistocephalus* parasites in threespine and ninespine stickleback hosts revealed by DNA sequence analysis. *PLoS One* 6, e22505.
- Northcott, S.J., Lyndon, A.R., Campbell, A.D., 1997. An outbreak of freshwater fish lice, *Argulus foliaceus* L., seriously affecting a Scottish stillwater fishery. *Fish. Manag. Ecol.* 4, 73–75.
- Olson, R.E., 1976. Laboratory and field studies on *Glugea stephani* (Hagenmuller), a microsporidian parasite of pleuronectid flatfishes. *J. Protozool.* 23, 158–164.
- Östlund-Nilsson, S., Holmlund, M., 2003. The artistic three-spined stickleback (*Gasterosteus aculeatus*). *Behav. Ecol. Sociobiol.* 53, 214–220.
- Östlund-Nilsson, S., Mayer, I., Huntingford, F.A., 2006. *Biology of the Three-spined Stickleback*. CRC Press, p. 329.
- Owen, J.A., Punt, J., Stranford, S.A., Jones, P.P., Kuby, J., 2013. *Kuby Immunology*. W. H. Freeman, New York, p. 574.
- Parg, C., Seng, W.L., Semino, C., Mcgrath, P., 2002. Zebrafish: a preclinical model for drug screening. *Assay. Drug Dev. Technol.* 1, 41–48.



- Parra, D., Reyes-Lopez, F.E., Tort, L., 2015. Mucosal immunity and B cells in teleosts: effect of vaccination and stress. *Front. Immunol.* 6, 354.
- Parra-Laca, R., Hernández-Hernández, F.C., Lanz-Mendoza, H., Borrego Enríquez, L.E., García Gil, F.L., 2015. Isolation and identification of *Saprolegnia* sp. from fresh water aquarium fishes and the hemolymph immune response of *Dactylopus coccus* Costa de 1835 (Homoptera: Coccoidea: Dactylopidae) against this oomycete. *Entomol. Ornithol. Herpetol.* 4, 1–5.
- Pasternak, A.F., Mikheev, V.N., Valtonen, E.T., 2000. Life history characteristics of *Argulus foliaceus* L. (Crustacea: Branchiura) populations in Central Finland. *Ann. Zool. Fenn.* 37, 25–35.
- Pedersen, A.B., Fenton, A., 2007. Emphasizing the ecology in parasite community ecology. *Trends Ecol. Evol.* 22, 133–139.
- Pennycuik, L., 1971. Differences in the parasite infections in three-spined sticklebacks (*Gasterosteus aculeatus* L.) of different sex, age and size. *Parasitology* 63, 407–418.
- Pickering, A.D., Duston, J., 1983. Administration of cortisol to brown trout, *Salmo trutta* L., and its effects on the susceptibility to *Saprolegnia* infection and furunculosis. *J. Fish. Biol.* 23, 163–175.
- Pike, T.W., Blount, J.D., Lindström, J., Metcalfe, N.B., 2009. Dietary carotenoid availability, sexual signalling and functional fertility in sticklebacks. *Biol. Lett.* 6, 191–193.
- Pottinger, T.G., Carrick, T.R., Yeomans, W.E., 2002. The three-spined stickleback as an environmental sentinel: effects of stressors on whole-body physiological indices. *J. Fish. Biol.* 61, 207–229.
- Poulin, R., 1995. “Adaptive” changes in the behaviour of parasitized animals: a critical review. *Int. J. Parasitol.* 25, 1371–1383.
- Powell, J.R., Scott, W.W., Krieg, N.R., 1972. Physiological parameters of growth in *Saprolegnia parasitica* coker. *Mycopathol. Mycol. Appl.* 47, 1–40.
- Press, C.M., Evensen, Ø., 1999. The morphology of the immune system in teleost fishes. *Fish. Shellfish Immun.* 9, 209–318.
- Raeymaekers, J.A., Huysse, T., Maelfait, H., Hellemans, B., Volckaert, F.A., 2008. Community structure, population structure and topographical specialisation of *Gyrodactylus* (Monogenea) ectoparasites living on sympatric stickleback species. *Folia Parasitol.* 55, 187–196.
- Raeymaekers, J.A., Wegner, K.M., Huyset, T., Volckaert, F.A., 2011. Infection dynamics of the monogenean parasite *Gyrodactylus gasterostei* on sympatric and allopatric populations of the three-spined stickleback *Gasterosteus aculeatus*. *Folia Parasitol.* 58, 27–34.
- Ramírez, R., Bakke, T.A., Harris, P.D., 2015. Population regulation in *Gyrodactylus salaris* – Atlantic salmon (*Salmo salar* L.) interactions: testing the paradigm. *Parasit. Vectors* 8, 392.
- Räsänen, K., Hendry, A.P., 2014. Asymmetric reproductive barriers and mosaic reproductive isolation: insights from Misty lake–stream stickleback. *Ecol. Evol.* 4, 1166–1175.
- Ratanarat-Brockelman, C., 1974. Migration of *Diplostomum spathaceum* (Trematoda) in the fish intermediate host. *Z. Parasitenkd.* 43, 123–134.
- Rauch, G., Kalbe, M., Reusch, T.B.H., 2006. One day is enough: rapid and specific host–parasite interactions in a stickleback–trematode system. *Biol. Lett.* 2, 382–384.
- Reimchen, T.E., 1994. Predators and morphological evolution in threespine stickleback. In: Bell, M.A., Foster, S.A. (Eds.), *The Evolutionary Biology of the Three-spined Stickleback*. Oxford University Press, Oxford, pp. 240–276.
- Reusch, T.B.H., Wegner, K.M., Kalbe, M., 2001a. Rapid genetic divergence in postglacial populations of threespine stickleback (*Gasterosteus aculeatus*): the role of habitat type, drainage and geographical proximity. *Mol. Ecol.* 10, 2435–2445.

- Reusch, T.B.H., Haberli, M.A., Aeschlimann, P.B., Milinski, M., 2001b. Female sticklebacks count alleles in a strategy of sexual selection explaining MHC polymorphism. *Nature* 414, 300–302.
- Riberio, O.K., 1983. Physiology of asexual sporulation and spore germination in *Phytophthora*. In: Erwin, D.C., Bartnicki-Garcia, S., Tsao, P.S. (Eds.), *Phytophthora: Its Biology, Taxonomy, Ecology and Pathology*. American Phytopathological Society, St. Paul, pp. 55–70.
- Rieger, J.K., Haase, D., Reusch, T.B., Kalbe, M., 2013. Genetic compatibilities, outcrossing rates and fitness consequences across life stages of the trematode *Diplostomum pseudospathaceum*. *Int. J. Parasitol.* 43, 485–491.
- Rintamäki-Kinnunen, P., Karvonen, A., Anttila, P., Valtonen, E.T., 2004. *Diplostomum spathaceum* metacercarial infection and colour change in salmonid fish. *Parasitol. Res.* 93, 51–55.
- Roberge, C., Páez, D.J., Rossignol, O., Guderley, H., Dodson, J., Bernatchez, L., 2007. Genome-wide survey of the gene expression response to saprolegniasis in Atlantic salmon. *Mol. Immunol.* 44, 1374–1383.
- Rombout, J.H., Yang, G., Kiron, V., 2014. Adaptive immune responses at mucosal surfaces of teleost fish. *Fish. Shellfish Immun.* 40, 634–643.
- Rooke, D.M., Shattock, R., 1983. Effect of chloramphenicol and streptomycin on developmental stages of *Phytophthom infestans*. *Microbiology* 129, 3401–3410.
- Roon, S.R., Alexander, J.D., Jacobson, K.C., Bartholomew, J.L., 2015. Effect of *Nanophyetus salmincola* and bacterial co-infection on mortality of juvenile chinook salmon. *J. Aquat. Anim. Health* 27, 209–216.
- Ruane, N.M., Nolan, D.T., Rotllant, J., Tort, L., Balm, P.H.M., Wendelaar Bonga, S.E., 1999. Modulation of the response of rainbow trout (*Oncorhynchus mykiss* Walbaum) to confinement, by an ectoparasitic (*Argulus foliaceus* L.) infestation and cortisol feeding. *Fish Physiol. Biochem.* 20, 43–51.
- Sahoo, P.K., Mohanty, J., Hemaprasanth, Kar, B., Mohanty, B.R., Garnayak, S.K., Jena, J.K., 2013. Egg laying strategies and effect of temperature on egg development of *Argulus siamensis*. *J. Parasit. Dis.* 37, 158–162.
- Sandoval-Sierra, J.V., Martín, M.P., Diéguez-Urbeondo, J., 2014. Species identification in the genus *Saprolegnia* (Oomycetes): defining DNA-based molecular operational taxonomic units. *Fungal Biol.* 118, 559–578.
- Saurabh, S., Sahoo, P.K., Mohanty, B.R., Mohanty, J., Jena, J.K., Mukherjee, S.C., Sarangi, N., 2010. Modulation of the innate immune response of rohu *Labeo rohita* (Hamilton) by experimental freshwater lice *Argulus siamensis* (Wilson) infection. *Aquacult. Res.* 41, 326–335.
- Saurabh, S., Mohanty, B.R., Sahoo, P.K., 2011. Expression of immune-related genes in rohu *Labeo rohita* (Hamilton) by experimental freshwater lice *Argulus siamensis* (Wilson) infection. *Vet. Parasitol.* 175, 119–128.
- Scharsack, J.P., Kalbe, M., 2014. Differences in susceptibility and immune responses of three-spined sticklebacks (*Gasterosteus aculeatus*) from lake and river ecotypes to sequential infections with the eye fluke *Diplostomum pseudospathaceum*. *Parasit. Vectors* 7, 109.
- Scharsack, J.P., Kalbe, M., Dermer, R., Kurtz, J., Milinski, M., 2004. Modulation of granulocyte responses in three-spined sticklebacks *Gasterosteus aculeatus* infected with the tapeworm *Schistocephalus solidus*. *Dis. Aquat. Organ.* 59, 141–150.
- Scharsack, J.P., Kalbe, M., Harrod, C., Rauch, G., 2007a. Habitat-specific adaptation of immune responses of stickleback (*Gasterosteus aculeatus*) lake and river ecotypes. *Proc. R. Soc. Lond. B* 274, 1523–1532.
- Scharsack, J.P., Koch, K., Hammerschmidt, K., 2007b. Who is in control of the stickleback immune system: interactions between *Schistocephalus solidus* and its specific vertebrate host. *Proc. R. Soc. Lond. B* 274, 3151–3158.

- Scharsack, J.P., Gossens, A., Franke, F., Kurtz, J., 2013. Excretory products of the cestode, *Schistocephalus solidus*, modulate *in vitro* responses of leukocytes from its specific host, the three-spined stickleback (*Gasterosteus aculeatus*). *Fish. Shellfish Immun.* 35, 1779–1787.
- Schelkle, B., Shinn, A.P., Peeler, E., Cable, J., 2009. Treatment of gyrodactylid infections in fish. *Dis. Aquat. Organ.* 86, 65–75.
- Schluter, D., 1993. Adaptive radiation in sticklebacks: size, shape and habitat use efficiency. *Ecology* 74, 699–709.
- Schluter, D., 1995. Adaptive radiation in sticklebacks: trade-offs in feeding performance and growth. *Ecology* 76, 82–90.
- Schluter, D., 1996. Ecological causes of adaptive radiation. *Am. Nat.* 148, S60–S64.
- Schluter, D., 2016. Basic Stickleback Husbandry [Online]. <https://www.zoology.ubc.ca/~schluter/wordpress/stickleback/raise-stickleback/>.
- Schmahl, G., el Toukhy, A., Ghaffar, F.A., 1990. Transmission electron microscopic studies on the effects of toltrazuril on *Glugea anomala*, Moniez, 1887 (Microsporidia) infecting the three-spined stickleback *Gasterosteus aculeatus*. *Parasitol. Res.* 76, 700–706.
- Schmahl, G., Benini, J., 1998. Treatment of fish parasites. 11. Effects of different benzimidazole derivatives (albendazole, mebendazole, fenbendazole) on *Glugea anomala*, Moniez, 1887 (Microsporidia): ultrastructural aspects and efficacy studies. *Parasitol. Res.* 84, 41–49.
- Scott, M.E., Anderson, R.M., 1984. The population dynamics of *Gyrodactylus bullatarudis* (Monogenea) within laboratory populations of the fish host *Poecilia reticulata*. *Parasitology* 89, 159–194.
- Sellin, M.K., Tate-Boldt, E., Kolok, A.S., 2005. Acclimation to Cu in fathead minnows: does age influence the response? *Aquat. Toxicol.* 74, 97–109.
- Selosse, P.M., Rowland, S.J., 1990. Use of common salt to treat ichthyophthiriasis in australian warmwater fishes. *Prog. Fish. Cult.* 52, 124–127.
- Shafir, A., As, J.G.V., 1986. Laying, development and hatching of eggs of the fish ectoparasite *Argulus japonicus* (Crustacea: Branchiura). *J. Zool.* 210, 401–413.
- Shailesh, S., Sahoo, P.K., 2010. Non-specific immune responses of the Indian major carp *Labeo rohita* Hamilton to infestation by the freshwater fish louse *Argulus siamensis* (Wilson). *Indian J. Fish.* 57, 45–53.
- Shapiro, M.D., Marks, M.E., Peichel, C.L., Blackman, B.K., Nereng, K.S., Jonsson, B., Schluter, D., Kingsley, D.M., 2004. Genetic and developmental basis of evolutionary pelvic reduction in threespine sticklebacks. *Nature* 428, 717–723.
- Shaw, R.W., Kent, M.L., 1999. Fish microsporidia. In: Wittner, M., Weiss, L.M. (Eds.), *The Microsporidia and Microsporidiosis*. AMS Press, Washington D.C., pp. 418–446.
- Shimura, S., 1983. Seasonal occurrence, sex ratio and site preference of *Argulus coregoni* Thorell (Crustacea: Branchiura) parasitic on cultured freshwater salmonids in Japan. *Parasitology* 86, 537–552.
- Shinn, A.P., Collins, C., García-Vásquez, A., Snow, M., Matějusková, I., Paladini, G., Longshaw, M., Lindénström, T., Stone, D.M., Turnbull, J.F., Picon-Camacho, S.M., Rivera, C.V., Duguid, R.A., Mo, T.A., Hansen, H., Olstad, K., Cable, J., Harris, P.D., Kerr, R., Graham, D., Monaghan, S.J., Yoon, G.H., Buchmann, K., Taylor, N.G.H., Bakke, T.A., Raynard, R., Irving, S., Bron, J.E., 2010. Multi-centre testing and validation of current protocols for the identification of *Gyrodactylus salaris* (Monogenea). *Int. J. Parasitol.* 40, 1455–1467.
- Concurrent infections (parasitism and bacterial disease) in tilapia. In: Shoemaker, C.A., Xu, D., Klesius, P.H., Evans, J.J. (Eds.), October 2008. *Proceedings of the 8th International Symposium on Tilapia in Aquaculture*, pp. 12–14.
- Sitjà-Bobadilla, A., 2008. Living off a fish: a trade-off between parasites and the immune system. *Fish. Shellfish Immun.* 25, 358–372.

- Skorping, A., 1980. Population biology of the nematode *Camallanus lacustris* in perch, *Perca fluviatilis* L., from an oligotrophic lake in Norway. *J. Fish. Biol.* 16, 483–492.
- Smallbone, W., van Oosterhout, C., Cable, J., 2016a. The effects of inbreeding on disease susceptibility: *Gyrodactylus tumbullii* infection of guppies, *Poecilia reticulata*. *Exp. Parasitol.* 167, 32–37.
- Smallbone, W., Cable, J., Maceda-Veiga, A., 2016b. Chronic nitrate enrichment decreases severity and induces protection against an infectious disease. *Environ. Int.* 91, 265–270.
- Smith, G., Smith, C., Kenny, J.G., Chaudhuri, R.R., Ritchie, M.G., 2015a. Genome-wide DNA methylation patterns in wild samples of two morphotypes of threespine stickleback (*Gasterosteus aculeatus*). *Mol. Biol. Evol.* 32, 888–895.
- Smith, C.C.R., Snowberg, L.K., Gregory Caporaso, J., Knight, R., Bolnick, D.I., 2015b. Dietary input of microbes and host genetic variation shape among-population differences in stickleback gut microbiota. *ISME J.* 9, 2515–2526.
- Smyth, J.D., 1954. Studies on tapeworm physiology. VII. fertilization of *Schistocephalus solidus* in vitro. *Exp. Parasitol.* 3, 64–71.
- Smyth, J.D., 1959. Maturation of larval pseudophyllidean cestodes and strigeid trematodes under axenic conditions; the significance of nutritional levels in plathyhelminth development. *Ann. N. Y. Acad. Sci.* 77, 102–125.
- Smyth, J.D., 1962. *Schistocephalus solidus*. In: Bullough, W.S. (Ed.), *Introduction to Animal Parasitology*. The English Universities Press Ltd, pp. 248–253.
- Smyth, J.D., 1990. *In Vitro Cultivation of Parasitic Helminths*. CRC Press, p. 288.
- Sokołowska, E., Kulczykowska, E., 2009. Environmental influence on maturation and dominance relationships in the three-spined stickleback (*Gasterosteus aculeatus* L.): temperature competes with photoperiod for primacy. *Oceanol. Hydrobiol. Stud.* 38, 31–48.
- Soleng, A., Bakke, T.A., 1998. The susceptibility of three-spined stickleback (*Gasterosteus aculeatus*), nine-spined stickleback (*Pungitius pungitius*) and flounder (*Platichthys flesus*) to experimental infections with the monogenean *Gyrodactylus salaris*. *Folia Parasitol.* 45, 270–274.
- Soleng, A., Jansen, P.A., Bakke, T.A., 1999. Transmission of the monogenean *Gyrodactylus salaris*. *Folia Parasitol.* 46, 179–184.
- Songe, M.M., Thoen, E., Evensen, O., Skaar, I., 2014. In vitro passages impact on virulence of *Saprolegnia parasitica* to Atlantic salmon, *Salmo salar* L. parr. *J. Fish. Dis.* 37, 825–834.
- Spagnoli, S., Sanders, J., Kent, M.L., 2016. The common neural parasite *Pseudoloma neurophilia* causes altered shoaling behaviour in adult laboratory zebrafish (*Danio rerio*) and its implications for neurobehavioural research. *J. Fish. Dis.* 1–4.
- Sprehn, C.G., Blum, M.J., Quinn, T.P., Heins, D.C., 2015. Landscape genetics of *Schistocephalus solidus* parasites in threespine stickleback (*Gasterosteus aculeatus*) from Alaska. *PLoS One* 10, e0122307.
- Srivastava, S., Sinha, R., Roy, D., 2004. Toxicological effects of malachite green. *Aquat. Toxicol.* 66, 319–329.
- Stromberg, P.C., Crites, J.L., 1974. The life cycle and development of *Camallanus oxycephalus* ward and Magath, 1916 (Nematoda: Camallanidae). *J. Parasitol.* 60, 117–124.
- Stromberg, P.C., Crites, J.L., 1975. Population biology of *Camallanus oxycephalus* ward and Magath, 1916 (Nematoda: Camallanidae) in white bass in western lake Erie. *J. Parasitol.* 61, 123–132.
- Stutz, W.E., Schmerer, M., Coates, J.L., Bolnick, D.I., 2015. Among-lake reciprocal transplants induce convergent expression of immune genes in threespine stickleback. *Mol. Ecol.* 24, 4629–4646.

- Su, Z., Segura, M., Morgan, K., Loredó-Osti, J.C., Stevenson, M.M., 2005. Impairment of protective immunity to blood-stage malaria by concurrent nematode infection. *Infect. Immun.* 73, 3531–3539.
- Sudova, E., Machova, J., Svobodova, Z., Vesely, T., 2007. Negative effects of malachite green and possibilities of its replacement in the treatment of fish eggs and fish: a review. *Vet. Med.-Czech.* 52, 527–539.
- Sun, Q., Hu, K., Yang, X.-L., 2014. The efficacy of copper sulfate in controlling infection of *Saprolegnia parasitica*. *J. World Aquacult. Soc.* 45, 220–225.
- Sweeting, R., 1974. Investigations into natural and experimental infections of freshwater fish by the common eye-fluke *Diplostomum spathaceum* Rud. *Parasitology* 69, 291–300.
- Takano, T., Kondo, H., Hirono, I., Endo, M., Saito-Taki, T., Aoki, T., 2011. Toll-like receptors in teleosts. In: Bondad-Reantaso, M.G., Jones, J.B., Corsina, F., Aoki, T. (Eds.), *Diseases in Asian Aquaculture VII. Fish Health Section*. Asian Fisheries Society, Malaysia, pp. 197–208.
- Takizawa, F., Koppang, E.O., Ohtani, M., Nakanishi, T., Hashimoto, K., Fischer, U., Dijkstra, J.M., 2011. Constitutive high expression of interleukin-4/13A and GATA-3 in gill and skin of salmonid fishes suggests that these tissues form Th2-skewed immune environments. *Mol. Immunol.* 48, 1360–1368.
- Taylor, E.B., McPhail, J.D., 1986. Prolonged and burst swimming in anadromous and freshwater threespine stickleback, *Gasterosteus aculeatus*. *Can. J. Zool.* 64, 416–420.
- Taylor, E.B., McPhail, J.D., 1999. Evolutionary history of an adaptive radiation in species pairs of threespine sticklebacks (*Gasterosteus*): insights from mitochondrial DNA. *Biol. J. Linn. Soc.* 66, 271–291.
- Taylor, N.G.H., Wootten, R., Sommerville, C., 2009. The influence of risk factors on the abundance, egg laying habits and impact of *Argulus foliaceus* in stillwater trout fisheries. *J. Fish. Dis.* 32, 509–519.
- The World Bank, 2013a. Introduction. In: *Fish to 2030: Prospects for Fisheries and Aquaculture*. The World Bank, Washington, pp. 1–10.
- The World Bank, 2013b. IMPACT projections to 2030 under the the baseline specification. In: *Fish to 2030: Prospects for Fisheries and Aquaculture*. The World Bank, Washington, pp. 39–54.
- Toen, E., Evensen, O., Skaar, I., 2010. Microwell enumeration of viable Saprolegniaceae in water samples. *Mycologia* 102, 478–485.
- Toen, E., Vrålstad, T., Rolén, E., Kristensen, R., Evensen, Ø., Skaar, I., 2015. *Saprolegnia* species in Norwegian salmon hatcheries: field survey identifies *S. didina* sub-clade IIIB as the dominating taxon. *Dis. Aquat. Organ.* 114, 189–198.
- Thomas, R.J., King, T.A., Forshaw, H.E., Marples, N.M., Speed, M.P., Cable, J., 2010. The response of fish to novel prey: evidence that dietary conservatism is not restricted to birds. *Behav. Ecol.* 21, 669–675.
- Tieman, D.M., Goodwin, A.E., 2001. Treatments for ich infestations in channel catfish evaluated under static and flow-through water conditions. *N. Am. J. Aquacult.* 63, 293–299.
- Tierney, J.F., Crompton, D.W., 1992. Infectivity of plerocercoids of *Schistocephalus solidus* (Cestoda: Ligulidae) and fecundity of the adults in an experimental definitive host, *Gallus gallus*. *J. Parasitol.* 78, 1049–1054.
- Tierney, J.F., Huntingford, F.A., Crompton, D.W.T., 1996. Body condition and reproductive status in sticklebacks exposed to a single wave of *Schistocephalus solidus* infection. *J. Fish. Biol.* 49, 483–493.
- Tinbergen, N., van Iersel, J., 1947. “Displacement Reactions” in the three-spined stickleback. *Behaviour* 1, 56–63.
- Traynor, T.R., Huffnagle, G.B., 2001. Role of chemokines in fungal infections. *Med. Mycol.* 39, 41–50.

- Urdal, K., Tierney, J.F., Jakobsen, P.J., 1995. The tapeworm *Schistocephalus solidus* alters the activity and response, but not the predation susceptibility of infected copepods. *J. Parasitol.* 81, 330–333.
- van den Berg, A.H., McLaggan, D., Diéguez-Urbeondo, J., van West, P., 2013. The impact of the water moulds *Saprolegnia diclina* and *Saprolegnia parasitica* on natural ecosystems and the aquaculture industry. *Fungal Biol. Rev.* 27, 33–42.
- van Oosterhout, C., Harris, P., Cable, J., 2003. Marked variation in parasite resistance between two wild populations of the Trinidadian guppy, *Poecilia reticulata* (Pisces: Poeciliidae). *Biol. J. Linn. Soc.* 79, 645–651.
- van Oosterhout, C., Joyce, D.A., Cummings, S.M., Blais, J., Barson, N.J., Ramnarine, I.W., Mohammed, R.S., Persad, N., Cable, J., 2006. Balancing selection, random genetic drift, and genetic variation at the major histocompatibility complex in two wild populations of guppies (*Poecilia reticulata*). *Evolution* 60, 2562–2574.
- van West, P., 2006. *Saprolegnia parasitica*, an oomycete pathogen with a fishy appetite: new challenges for an old problem. *Mycologist* 20, 99–104.
- van West, P., de Bruijn, I., Minor, K.L., Phillips, A.J., Robertson, E.J., Wawra, S., Bain, J., Anderson, V.L., Secombes, C.J., 2010. The putative RxLR effector protein SpHtp1 from the fish pathogenic oomycete *Saprolegnia parasitica* is translocated into fish cells. *FEMS Microbiol. Lett.* 310, 127–137.
- Walker, J.A., 1997. Ecological morphology of lacustrine threespine stickleback *Gasterosteus aculeatus* L. (Gasterosteidae) body shape. *Biol. J. Linn. Soc.* 61, 3–50.
- Walker, P., Russon, I., Haond, C., van der Velde, G., Wendelaar-Bonga, S., 2011. Feeding in adult *Argulus japonicus* Thiele, 1900 (maxillopoda, Branchiura), an ectoparasite on fish. *Crustaceana* 84, 307–318.
- Walker, P.D., Flik, G., Bonga, S.E.W., 2004. The biology of parasites from the genus *Argulus* and a review of the interactions with its host. In: Wiegertjes, G.F., Flik, G. (Eds.), *Host-parasite Interactions*. Garland Science, Abingdon, UK, pp. 110–134.
- Wang, G., Yang, E., Smith, K.J., Zeng, Y., Ji, G., Connon, R., Fangue, N.A., Cai, J.J., 2014. Gene expression responses of threespine stickleback to salinity: implications for salt-sensitive hypertension. *Front. Genet.* 5, 312.
- Ward, A.J., Duff, A.J., Krause, J., Barber, I., 2005. Shoaling behaviour of sticklebacks infected with the microsporidian parasite, *Glugea anomala*. *Environ. Biol. Fish* 72, 155–160.
- Watts, M., Munday, B., Burke, C., 2008. Immune responses of teleost fish. *Aust. Vet. J.* 79, 570–574.
- Wawra, S., Bain, J., Durward, E., de Bruijn, I., Minor, K.L., Matena, A., Löbach, L., Whisson, S.C., Bayer, P., Porter, A.J., Birch, P.R.J., Secombes, C.J., van West, P., 2012. Host-targeting protein 1 (SpHtp1) from the oomycete *Saprolegnia parasitica* translocates specifically into fish cells in a tyrosine-O-sulphate-dependent manner. *Proc. Natl. Acad. Sci. U.S.A.* 109, 2096–2101.
- Wedekind, C., Milinski, M., 1996. Do three-spined sticklebacks avoid consuming copepods, the first intermediate host of *Schistocephalus solidus*?—An experimental analysis of behavioural resistance. *Parasitology* 112, 371–383.
- Wedekind, C., Christen, M., Schärer, L., Treichel, N., 2000. Relative helminth size in crustacean hosts: in vivo determination, and effects of host gender and within-host competition in a copepod infected by a cestode. *Aquat. Ecol.* 34, 279–285.
- Wedemeyer, G.A., 1996. Interactions with water quality conditions. In: *Physiology of Fish in Intensive Culture Systems*. Springer, U.S., pp. 60–110.
- Wegner, K., Kalbe, M., Rauch, G., Kurtz, J., Schaschl, H., Reusch, T., 2006. Genetic variation in MHC class II expression and interactions with MHC sequence polymorphism in three-spined sticklebacks. *Mol. Ecol.* 15, 1153–1164.
- Wegner, K.M., Kalbe, M., Kurtz, J., Reusch, T.B., Milinski, M., 2003a. Parasite selection for immunogenetic optimality. *Science* 301, 1343.

- Wegner, K.M., Reusch, T.B., Kalbe, M., 2003b. Multiple parasites are driving major histocompatibility complex polymorphism in the wild. *J. Evol. Biol.* 16, 224–232.
- Weissenberg, R., 1968. Intracellular development of the microsporidian *Glugea anomala* Moniez in hypertrophying migratory cells of the fish *Gasterosteus aculeatus* L., an example of the formation of “xenoma” tumours. *J. Protozool. Res.* 15, 44–57.
- Whyte, S., Allan, J., Secombes, C., Chappell, L., 1987. Cercariae and diplostomules of *Diplostomum spathaceum* (Digenea) elicit an immune response in rainbow trout, *Salmo gairdneri* Richardson. *J. Fish. Biol.* 31, 185–190.
- Whyte, S.K., Chappell, L.H., Secombes, C.J., 1989. Cyto-toxic reactions of rainbow-trout, *Salmo gairdneri* Richardson, macrophages for larvae of the eye fluke *Diplostomum spathaceum* (Digenea). *J. Fish. Biol.* 35, 333–345.
- Wienholds, E., Kloosterman, W.P., Miska, E., Alvarez-Saavedra, E., Berezikov, E., de Bruijn, E., Horvitz, H.R., Kauppinen, S., Plasterk, R.H.A., 2005. MicroRNA expression in zebrafish embryonic development. *Science* 309, 310–311.
- Williams, M.O., 1966. Studies on the morphology and life-cycle of *Diplostomum* (*Diplostomum*) *gasterostei* (Strigeida: Trematoda). *Parasitology* 56, 693–706.
- Willoughby, L.G., 1994. Fungi and Fish Diseases, Stirling. Pisces Press, Scotland, p. 57.
- Wootton, R.J., 1976. Biology of the Sticklebacks. Academic Press, London, p. 387.
- Wootton, R.J., 1984a. A Functional Biology of Sticklebacks. University of California Press, California, p. 265.
- Wootton, R.J., 1984b. Environmental factors, metabolism and energetics. In: A Functional Biology of Sticklebacks. University of California Press, California, pp. 103–154.
- Wootton, R.J., 1984c. Reproduction. In: A Functional Biology of Sticklebacks. University of California Press, California, pp. 103–154.
- Wouters, R., Lavens, P., Nieto, J., Sorgeloos, P., 2001. Penaeid shrimp broodstock nutrition: an updated review on research and development. *Aquaculture* 202, 1–21.
- Xavier, R., Faria, P.J., Paladini, G., van Oosterhout, C., Johnson, M., Cable, J., 2015. Evidence for cryptic speciation in directly transmitted gyrodactylid parasites of Trinidadian guppies. *PLoS One* 10, e0117096.
- Yeates-Burghart, Q.S., O’Brien, C., Cresko, W.A., Holzapfel, C.M., Bradshaw, W.E., 2009. Latitudinal variation in photoperiodic response of the three-spined stickleback *Gasterosteus aculeatus* in western North America. *J. Fish. Biol.* 75, 2075–2081.
- Zhang, Y.A., Salinas, I., Li, J., Parra, D., Bjork, S., Xu, Z., LaPatra, S.E., Bartholomew, J., Sunyer, J.O., 2010. IgT, a primitive immunoglobulin class specialized in mucosal immunity. *Nat. Immunol.* 11, 827–835.
- Zon, L.I., Peterson, R.T., 2005. In vivo drug discovery in the zebrafish. *Nat. Rev. Drug Discov.* 4, 35–44.