

SCIENTIFIC REPORTS



OPEN

No Association of Coronary Artery Disease with X-Chromosomal Variants in Comprehensive International Meta-Analysis

Received: 27 May 2016
Accepted: 26 September 2016
Published: 12 October 2016

Christina Loley^{1,2}, Maris Alver^{3,4}, Themistocles L. Assimes⁵, Andrew Bjornnes⁶, Anuj Goel^{7,8}, Stefan Gustafsson⁹, Jussi Hernesniemi^{10,11}, Jemma C. Hopewell¹², Stavroula Kanoni¹³, Marcus E. Kleber¹⁴, King Wai Lau¹², Yingchang Lu¹⁵, Leo-Pekka Lyytikäinen^{10,16}, Christopher P. Nelson^{17,18}, Majid Nikpay¹⁹, Liming Qu²⁰, Elias Salfati⁵, Markus Scholz^{21,22}, Taru Tukiainen^{23,24}, Christina Willenborg^{2,25}, Hong-Hee Won²⁶, Lingyao Zeng^{27,28}, Weihua Zhang^{29,30}, Sonia S. Anand³¹, Frank Beutner^{22,32}, Erwin P. Bottinger¹⁵, Robert Clarke¹², George Dedoussis³³, Ron Do^{15,34,35,36}, Tõnu Esko^{3,37}, Markku Eskola¹¹, Martin Farrall^{7,8}, Dominique Gauguier³⁸, Vilmantas Giedraitis³⁹, Christopher B. Granger⁴⁰, Alistair S. Hall⁴¹, Anders Hamsten⁴², Stanley L. Hazen⁴³, Jie Huang⁴⁴, Mika Kähönen^{45,46}, Theodosios Kyriakou^{7,8}, Reijo Laaksonen^{10,16,47}, Lars Lind⁴⁸, Cecilia Lindgren^{8,49}, Patrik K. E. Magnusson⁵⁰, Eirini Marouli¹³, Evelin Mihailov³, Andrew P. Morris^{8,51}, Kjell Nikus¹¹, Nancy Pedersen⁵⁰, Loukianos Rallidis⁵², Veikko Salomaa⁵³, Svati H. Shah⁴⁰, Alexandre F. R. Stewart¹⁹, John R. Thompson⁵⁴, Pierre A. Zalloua^{55,56}, John C. Chambers^{30,31,57}, Rory Collins¹², Erik Ingelsson^{8,9}, Carlos Iribarren⁵⁸, Pekka J. Karhunen^{10,59}, Jaspal S. Kooner^{31,57,60}, Terho Lehtimäki^{10,16}, Ruth J. F. Loos^{15,61}, Winfried März^{14,62,63}, Ruth McPherson¹⁹, Andres Metspalu^{3,4}, Muredach P. Reilly⁶⁴, Samuli Ripatti^{58,65,66}, Dharambir K. Sanghera^{67,68,69}, Joachim Thiery^{22,70}, Hugh Watkins^{7,8}, Panos Deloukas^{13,71,72}, Sekar Kathiresan^{6,24,37,73}, Nilesh J. Samani^{17,18}, Heribert Schunkert^{28,29}, Jeanette Erdmann^{2,25} & Inke R. König^{1,2}

In recent years, genome-wide association studies have identified 58 independent risk loci for coronary artery disease (CAD) on the autosome. However, due to the sex-specific data structure of the X chromosome, it has been excluded from most of these analyses. While females have 2 copies of chromosome X, males have only one. Also, one of the female X chromosomes may be inactivated. Therefore, special test statistics and quality control procedures are required. Thus, little is known about the role of X-chromosomal variants in CAD. To fill this gap, we conducted a comprehensive X-chromosome-wide meta-analysis including more than 43,000 CAD cases and 58,000 controls from 35 international study cohorts. For quality control, sex-specific filters were used to adequately take the special structure of X-chromosomal data into account. For single study analyses, several logistic regression models were calculated allowing for inactivation of one female X-chromosome, adjusting for sex and investigating interactions between sex and genetic variants. Then, meta-analyses including all 35 studies were conducted using random effects models. None of the investigated models revealed genome-wide significant associations for any variant. Although we analyzed the largest-to-date sample, currently available methods were not able to detect any associations of X-chromosomal variants with CAD.

¹Institut für Medizinische Biometrie und Statistik, Universität zu Lübeck, Universitätsklinikum Schleswig-Holstein, Campus Lübeck, Lübeck, Germany. ²DZHK (German Centre for Cardiovascular Research), partner site Hamburg–Lübeck–Kiel, Lübeck, Germany. ³Estonian Genome Center, University of Tartu, Tartu, Estonia. ⁴Institute of Molecular and Cell Biology, Tartu, Estonia. ⁵Department of Medicine, Division of Cardiovascular Medicine, Stanford University School of Medicine Stanford, Standford, California, USA. ⁶Center for Human Genetic Research, Massachusetts General Hospital, Boston, Massachusetts, USA. ⁷Division of Cardiovascular Medicine, Radcliffe

Department of Medicine, University of Oxford, Oxford, UK. ⁸Wellcome Trust Centre for Human Genetics, University of Oxford, Oxford, UK. ⁹Department of Medical Sciences, Molecular Epidemiology and Science for Life Laboratory, Uppsala University, Uppsala, Sweden. ¹⁰Department of Clinical Chemistry, Fimlab Laboratories, Tampere, Finland. ¹¹Department of Cardiology, Heart Hospital and University of Tampere School of Medicine, Tampere, Finland. ¹²CTSU, Nuffield Department of Population Health, University of Oxford, Oxford, UK. ¹³William Harvey Research Institute, Barts and The London School of Medicine and Dentistry, Queen Mary University of London, London, UK. ¹⁴Vth Department of Medicine, Medical Faculty Mannheim, Heidelberg University, Mannheim, Germany. ¹⁵The Charles Bronfman Institute for Personalized Medicine, Icahn School of Medicine at Mount Sinai, New York, USA. ¹⁶Department of Clinical Chemistry, University of Tampere School of Medicine, Tampere, Finland. ¹⁷Department of Cardiovascular Sciences, University of Leicester, Leicester, UK. ¹⁸NIHR Leicester Cardiovascular Biomedical Research Unit, Glenfield Hospital, Leicester, UK. ¹⁹Ruddy Canadian Cardiovascular Genetics Centre University of Ottawa Heart Institute, Ottawa, Canada. ²⁰Department of Biostatistics and Epidemiology, University of Pennsylvania, Philadelphia, Pennsylvania, USA. ²¹Institute for Medical Informatics, Statistics and Epidemiology/Medical Faculty/University of Leipzig, Leipzig, Germany. ²²LIFE Research Center of Civilization Diseases, Leipzig, Germany. ²³Analytic and Translation Genetics Unit, Massachusetts General Hospital, Boston, Massachusetts, USA. ²⁴Program in Medical and Population Genetics, Broad Institute, Cambridge, Massachusetts, USA. ²⁵Institut für Integrative und Experimentelle Genomik, Universität zu Lübeck, Universitätsklinikum Schleswig-Holstein, Campus Lübeck, Lübeck, Germany and University Heart Center Luebeck, Campus Lübeck, Lübeck, Germany. ²⁶Samsung Advanced Institute for Health Sciences and Technology (SAIHST), Sungkyunkwan University, Samsung Medical Center, Seoul, Korea. ²⁷Deutsches Herzzentrum München, Technische Universität München, Munich, Germany. ²⁸DZHK (German Centre for Cardiovascular Research), partner site Munich Heart Alliance, München, Germany. ²⁹Department of Epidemiology and Biostatistics, Imperial College London, London, UK. ³⁰Department of Cardiology, Ealing Hospital National Health Service (NHS) Trust, Middlesex, UK. ³¹Population Health Research Institute, McMaster University, Hamilton, Ontario, Canada. ³²Heart Center Leipzig, Cardiology, University of Leipzig, Leipzig, Germany. ³³Harokopio University Athens, Athens, Greece. ³⁴The Center for Statistical Genetics, Icahn School of Medicine at Mount Sinai, New York, USA. ³⁵The Icahn Institute for Genomics and Multiscale Biology, Icahn School of Medicine at Mount Sinai, New York, USA. ³⁶The Zena and Michael A. Weiner Cardiovascular Institute, Icahn School of Medicine at Mount Sinai, New York, USA. ³⁷Department of Medicine, Harvard Medical School, Boston, Massachusetts, USA. ³⁸INSERM, UMR51138, Centre de Recherche des Cordeliers, Paris, France. ³⁹Department of Public Health and Caring Sciences, Geriatrics, Uppsala University, Uppsala, Sweden. ⁴⁰Duke University School of Medicine, Durham, North Carolina, USA. ⁴¹Leeds Institute of Genetics, Health and Therapeutics, University of Leeds, UK. ⁴²Cardiovascular Genetics and Genomics Group, Atherosclerosis Research Unit, Department of Medicine Solna, Karolinska Institutet, Stockholm, Sweden. ⁴³Cleveland Clinic, Cleveland, Ohio, USA. ⁴⁴Boston VA Research Institute, Inc., Boston, Massachusetts, USA. ⁴⁵Department of Clinical Physiology, Tampere University Hospital, Tampere, Finland. ⁴⁶Department of Clinical Physiology, University of Tampere School of Medicine, Tampere, Finland. ⁴⁷Zora Biosciences, Espoo, Finland. ⁴⁸Department of Medical Sciences, Cardiovascular Epidemiology, Uppsala University, Uppsala, Sweden. ⁴⁹Broad Institute of the Massachusetts Institute of Technology and Harvard University, Cambridge, Massachusetts, USA. ⁵⁰Department of Medical Epidemiology and Biostatistics, Karolinska Institutet, Stockholm, Sweden. ⁵¹Department of Biostatistics, University of Liverpool, Liverpool, UK. ⁵²Second Department of Cardiology, University General Hospital Attikon, Athens, Greece. ⁵³Department of Chronic Disease Prevention, National Institute for Health and Welfare, Helsinki, Finland. ⁵⁴Department of Health Sciences, University of Leicester, Leicester, UK. ⁵⁵Lebanese American University, School of Medicine, Beirut, Lebanon. ⁵⁶Harvard School of Public Health, Boston, Massachusetts, USA. ⁵⁷Imperial College Healthcare NHS Trust, London, UK. ⁵⁸Kaiser Permanente, Division of Research, Oakland, California, USA. ⁵⁹Department of Forensic Medicine, University of Tampere School of Medicine, Tampere, Finland. ⁶⁰Cardiovascular Science, National Heart and Lung Institute, Imperial College London, London, UK. ⁶¹The Mindich Child Health and Development Institute, Icahn School of Medicine at Mount Sinai, New York, USA. ⁶²Synlab Academy, Synlab Services GmbH, Mannheim, Germany. ⁶³Clinical Institute of Medical and Chemical Laboratory Diagnostics, Medical University of Graz, Graz, Austria. ⁶⁴Cardiovascular Institute, Perelman School of Medicine at the University of Pennsylvania, Philadelphia, Pennsylvania, USA. ⁶⁵Hjelt Institute, University of Helsinki, Helsinki, Finland. ⁶⁶Institute for Molecular Medicine Finland FIMM, University of Helsinki, Helsinki, Finland. ⁶⁷Department of Pediatrics, College of Medicine, University of Oklahoma Health Sciences Center, Oklahoma City, Oklahoma, USA. ⁶⁸Department of Pharmaceutical Sciences, College of Pharmacy, University of Oklahoma Health Sciences Center, Oklahoma City, Oklahoma, USA. ⁶⁹Oklahoma Center for Neuroscience, Oklahoma City, Oklahoma, USA. ⁷⁰Institute for Laboratory Medicine, Clinical Chemistry and Molecular Diagnostics, University Hospital Leipzig, Medical Faculty, Leipzig, Germany. ⁷¹Wellcome Trust Sanger Institute, Hinxton, Cambridge, UK. ⁷²Princess Al-Jawhara Al-Brahim Centre of Excellence in Research of Hereditary Disorders (PACER-HD), King Abdulaziz University, Jeddah, Saudi Arabia. ⁷³Cardiovascular Research Center, Massachusetts General Hospital, Boston, Massachusetts, USA. Correspondence and requests for materials should be addressed to J.E. (email: jeanette.erdman@iieg.uni-luebeck.de) or I.R.K. (email: Inke.Koenig@imbs.uni-luebeck.de)

In the last years, genome-wide association studies (GWAS) have uncovered numerous chromosomal risk loci for various complex diseases. Specifically, for coronary artery disease (CAD), 58 independent risk loci have been identified and verified in independent replication datasets¹. However, a large part of the estimated heritability of CAD is not yet explained. This could be due partly to the fact that the X chromosome has routinely been excluded from GWAS. One reason for this is that the data has a different, sex-specific structure and, therefore, requires special analytical tools including special quality control and test statistics². Thus, despite the profound effects of gender on the manifestation of CAD, no systematic association analyses of X-chromosomal variants with CAD

Study	Ancestry	Cases (% females)	Controls (% females)	% MI* (in cases)
ADVANCE	White European	275 (59.9)	311 (60.7)	100.0
BioMe_AfrAm	African American	362 (66.5)	2778 (70.9)	36.0
BioMe_EurAm	European American	487 (35.0)	1382 (61.6)	30.4
BioMe_HisAm	Hispanic American	758 (55.1)	3338 (71.3)	36.7
Cardiogenics	White European	391 (13.7)	410 (60.8)	12.5
CATHGEN	White European	1191 (31.4)	646 (58.9)	48.1
CCGB_2	White European	1547 (21.8)	344 (45.0)	60.3
EGCUT	White European	658 (49.6)	5841 (56.1)	19.6
FGENTCARD	Libanese	1802 (25.0)	466 (50.8)	16.0
FINCAVAS	Finnish European	774 (21.2)	647 (44.8)	12.4
FINRISK/PredictCVD	Finnish European	677 (30.9)	1200 (42.7)	40.0
GerMIFSI	White European	637 (33.9)	1644 (51.2)	100.0
GerMIFSIH	White European	1222 (21.0)	1298 (48.5)	100.0
GerMIFSIH	White European	1096 (20.5)	1509 (52.2)	100.0
GerMIFSIH	White European	1002 (36.0)	1147 (61.9)	100.0
GerMIFSV	White European	2459 (24.5)	1611 (53.0)	100.0
HPS	White European	2700 (23.9)	2748 (72.5)	65.0
HSDS	White European	206 (0.0)	258 (0.0)	45.6
ITH	White European	402 (29.4)	449 (32.9)	100.0
LIFE-Heart	White European	1531 (24.8)	768 (50.3)	44.0
LOLIPOP	Indian Asian	2791 (18.5)	3757 (14.1)	43.9
LURIC	White European	2347 (25.5)	621 (48.0)	62.9
MEDSTAR	White European	875 (34.4)	447 (55.9)	100.0
MIGEN	White European	2905 (24.8)	2998 (26.9)	100.0
OHGS_A2	White European	921 (24.9)	1001 (50.5)	64.3
OHGS_B2	White European	1183 (22.4)	1391 (49.5)	55.6
OHGS_C2	White European	833 (6.4)	317 (66.7)	44.3
PENNCATH	White European	933 (29.2)	468 (58.8)	100.0
PIVUS	White European	119 (24.3)	830 (54.7)	77.3
PROCARDIS	White European	5719 (29.2)	6526 (62.5)	80.0
SDS	Indian Asian	176 (29.5)	1421 (49.0)	100.0
THISEAS	White European	423 (21.3)	593 (56.3)	60.1
TWINGENE	White European	814 (29.1)	5999 (55.8)	70.5
ULSAM	White European	322 (0.0)	857 (0.0)	84.2
WTCCC	White European	1922 (20.9)	2930 (51.2)	71.5
Total	—	43120 (28.2)	58291 (50.0)	66.7

Table 1. Cohort descriptives of the 35 studies participating in the 1000G coronary artery disease meta-analysis of the X-chromosome. *MI = myocardial infarction.

have been reported so far. Therefore, an analysis of the X-chromosome from GWAS data might help to narrow the gap of missing heritability and help to yield new insights into the genetics of CAD.

X-chromosomal variants might be expected to play a role in the pathophysiology, since sex-specific features are known for CAD. Specifically, the risk to develop CAD varies between males and females independent from other risk factors. The symptoms of myocardial infarction (MI) as well as the prognosis after MI differ between males and females. Males are more likely than females to manifest CAD at young age, but females are more likely than males to die of a first MI. Furthermore, heart disease is the most common cause of death for females³. Thus, the analysis of X-chromosomal variants could help to explain the sex differences in CAD.

To comprehensively investigate the association of variants on chromosome X and CAD, we collected data from 35 world-wide study cohorts. All participating studies were part of the CARDIoGRAM + C4D consortium¹. At each study site, quality control on subject level was performed, data were imputed on the basis of the 1000 genomes reference panel, and X chromosome-adapted association tests were calculated. After this, data were analyzed centrally at the University of Lübeck, where further quality control and the meta-analysis of all 35 studies were conducted. In the following, we will present the results of the association analysis of about 200,000 X-chromosomal single nucleotide polymorphisms (SNPs) with CAD on a sample of more than 100,000 subjects including more than 43,000 cases and 58,000 controls.

Results

Details on the investigated studies are summarized in Table 1. For each of the 35 studies, logistic regression models with additive scoring for the SNP were used. To account for the sex-specific structure of X-chromosomal

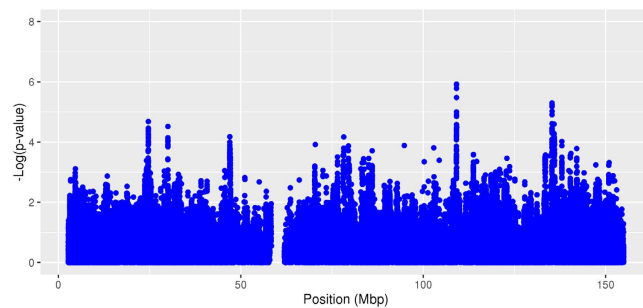


Figure 1. Chromosome-wide association results. The statistical model assumes no inactivation and no SNP*sex interaction. Shown are logarithmized random effects p-values of all 184,673 quality controlled SNPs in order of physical position in mega base pairs (mbp).

data, sex was always included as a covariate. In addition, interactions between SNP and sex were investigated. Where appropriate, further covariates could be included. Since one of the two female X-chromosomes may or may not be inactivated at a specific locus, models were calculated that assumed inactivation as well as not assuming inactivation.

The study-wise numbers of SNPs excluded due to quality control are given in Supplementary Tables S1 and S2. The inspection of inflation factors⁴ and Q-Q-plots (see also Supplementary Fig. S1) did not reveal any systematic inflation of specific studies. Thus, all studies were included in the meta-analysis.

None of the statistical models used for the meta-analysis revealed a genome-wide significant association with CAD for any SNP. Association results for the model without inactivation assumption and without SNP*sex interaction are presented in Fig. 1. Results of the other models are comparable and presented in Supplementary Figs S2–S6.

Subgroup and sensitivity analyses. To investigate possible sex-specific effects, we conducted subgroup analyses of males and females separately. Association plots of these models are presented in Supplementary Figs S7 and S8. Again, no genome-wide significant associations were to be observed. To exclude a possible bias introduced by including study cohorts of non-European ancestry, we performed a subgroup analysis including only the 31 studies with European background. Excluding non-European studies did not show additional associations either (Supplementary Figs S9–S14). Finally, to eliminate possible influences of the quality control parameters, we varied our criteria on missing frequencies and imputation quality. Performing stricter quality control reduced the number of SNPs available for meta-analysis to about 90,000 (depending on model, between 90,658 and 96,502). Results of these analyses were comparable to the results from the primary analyses. Thus, none of the sensitivity analyses did reveal novel associations, supporting the null findings of the main analyses.

Power. We estimated the power of our study overall as well as in the smallest subgroup analyzed, i.e. the subgroup of females, as functions of the odds ratio and the effect allele frequency (EAF) (Fig. 2). In the entire sample of males and females, odds ratios of 1.1 or 1.11 would have reliably been detected with an EAF of 0.1 or higher. Even in the female subgroup, odds ratios of 1.15 and higher would have been detectable with a sufficiently large probability.

Discussion

Although the presented meta-analyses included more than 100,000 subjects (the largest to date), with 43,120 CAD cases (28.2% women) and 58,291 controls (50% women), no genome-wide significant associations could be detected. This negative finding was independent of the model chosen for analysis. There were no sex-specific associations for CAD. Stricter quality control or excluding non-European studies did not reveal any different findings.

The NHGRI GWAS catalog^{5,6} reports 52 genome-wide significant associations of variants on chromosome X with more than 600 traits. All of the reported studies are of much smaller sample size (less than 50,000 samples) and used fewer methods than our analyses. Yet, they successfully discovered associations. However, no genome-wide significant associations with CAD or any other correlated phenotype have been reported on the X chromosome. The only gene reported for CAD on chromosome X is *CHRD1* with a p-value of $9 \cdot 10^{-7}$ for rs5943057⁷, but this did not replicate in our analyses ($p = 0.0172$ for the model without inactivation assumption and without SNP*sex interaction). As our power estimates indicated (Fig. 2), in such a large dataset, the statistical power to detect medium to large effects is high, and only small effects are likely to have been missed. Therefore, the most natural explanation to the negative finding of this meta-analysis is that there are no substantial associations of X-chromosomal variants with CAD.

However, since the progression and the symptoms of CAD, as well as the prognosis after MI, are sex-specific, it may be that the genetics of chromosome X are more complex than previously assumed. For example, the inactivation patterns are not yet understood completely, and it has been shown that inactivation of the female X-chromosome can be cell-specific. The silenced X-chromosome is not necessarily chosen randomly, and silenced regions can differ between females^{8,9}. Although we evaluated models with and without the assumption of inactivation, different inactivation patterns between females at one locus were not taken into account. Nor was

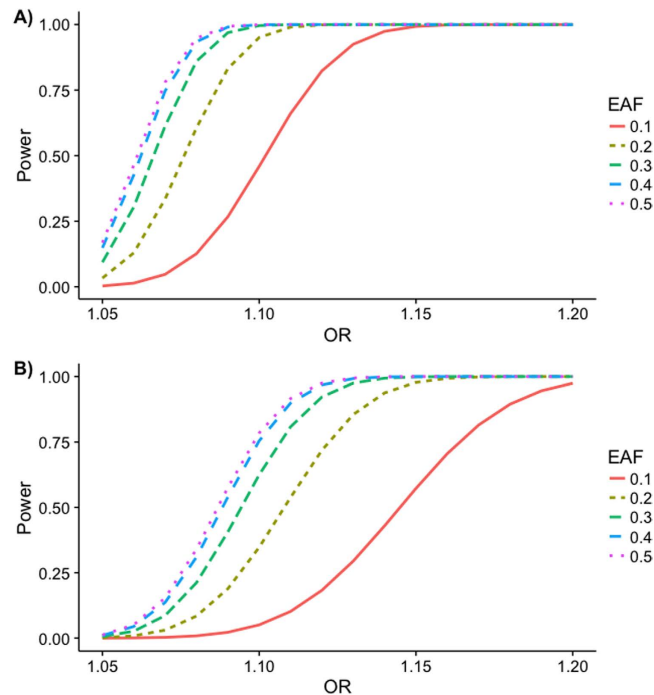


Figure 2. Estimated power. The power to detect an effect was estimated in dependence of the odds ratio (OR) and the effect allele frequency (EAF) using software Quanto (version 1.2.4 from May 2009). Parameters used for simulation: Binary (disease) phenotype, significance level $\alpha = 5 \cdot 10^{-8}$, disease prevalence $k_p = 0.1$, log-additive genetic model, no gene-environment interaction. (A) Effective $N_{\text{cases}} = 27,640$, 1.5817 effective controls per effective case (corresponding to 43,718 effective controls), (B) Female $N_{\text{cases}} = 12,160$, 2.3968 female controls per female case (corresponding to 29,145 female controls).

non-random inactivation incorporated into the model. This could affect the power of the test statistics that were used and might result in an analysis that is less powerful than estimated. Further, it might be argued that the use of other statistical methods could have yielded significant findings. Specifically, most other studies (e.g. refs 10 and 11) are based on a separate analysis of males and females with a subsequent summary by a classical or sex-specific¹² meta-analytic method. In contrast, we followed the approach to directly compute joint test statistics for males and females, taking the different structure of chromosome X in the sexes into account. However, examples for both methodological approaches have been compared in simulations^{13,14} with the overall result that the joint tests have greater power unless there are relevant differences in the effect sizes between males and females, which is not to be expected given our sex-specific subgroup analyses. Another potential limitation could be the lower coverage of chromosome X than autosomal chromosomes^{2,15}. Specifically, depending on the specific genotyping chip, the distance between two known variations¹⁶ averages roughly 700 to 10,000 bp on all chromosomes but about 1400 to 22,500 bp on chromosome X. Accordingly, the median distance in our studies is 11,300 bp, so that the coverage is less than optimal but comparable to the use of an older genotyping array in general. More generally, the use of these technologies is restricted to finding associations with SNPs only; the effect of other structural variants or even having XX instead of XY cannot thus be detected. Another explanation for the lack of significant associations could be problems with the imputation. Using the IMPUTE2 algorithm, as most of the study sites did, a mixture of two populations, males and females, is imputed together. Perhaps this leads to a bias that has not been taken adequately into account. From a clinical perspective, coronary disease and its manifestations differ in women, including a larger proportion of younger women with myocardial infarction having the distinct pathophysiology of coronary dissection, which could complicate the dissection of genetic influence according to sex.

Although we have analyzed the largest sample to date, we were not able to detect genome-wide significant associations between chromosome X variants and CAD with currently available methods. Due to this lack of significant associations, the sex-specific differences in CAD are still unexplained. The genetics of chromosome X may be more complex than has been assumed, so that more sophisticated test statistics which allow for these complex biological processes would be required to detect associations of variants on the X-chromosome with CAD.

Materials and Methods

Sex-specific structure of chromosome X. One reason why chromosome X is usually excluded from GWAS is that the data has a different, sex-specific structure and, therefore, requires special analytical tools^{15,17}. While there are two copies of each autosomal chromosome, males carry only one copy of the X chromosome whereas females, again, carry two copies. Therefore, at each SNP, females can carry one of three possible genotypes; that is, they can have 0, 1 or 2 copies of a specific allele. In contrast to this, there are only two possible genotypes for males, corresponding to 0 or 1 copies of a specific allele. Only for the so-called pseudo-autosomal

regions, there exist homologous loci on the Y chromosome, and males can have up to 2 copies of a specific allele. In addition, one of the two female X chromosomes might be inactivated. In each cell, one of the two female X chromosomes is randomly selected to be silenced¹⁸. This means that the expression levels of this chromosome are much lower than for the second chromosome in the cell. This mechanism of dose compensation should result in comparable expression levels for males and females despite the different number of chromosome copies. However, this inactivation is incomplete: while some genes or regions will be completely inactivated, some genes might show expression levels that are reduced only slightly or not at all⁸. Therefore, to analyze X-chromosomal data, special quality control and test statistics are required². Most of the quality control needs to be done separately for males and females, and test statistics for chromosome X should take into account the different data structure for males and females, for example by including sex as a covariate into the model. The choice of the best statistical test depends on the underlying genetic model and the inactivation patterns at a specific locus¹³.

Study cohorts. The meta-analysis includes data from 43,120 cases with CAD and 58,291 controls from 35 studies with 28.2% female cases and 50.0% female controls (for details, see Table 1). A subject was regarded as a CAD case if he/she had an inclusive CAD diagnosis, e.g. MI, acute coronary syndrome, chronic stable angina, or coronary stenosis >50%. More detailed information on the study cohorts can be found in the meta-analysis of autosomal variants of the CARDIoGRAMplusC4D Consortium¹ which included most of the samples presented here. Thirty-one of the 35 studies consist of subjects with European ancestry, two study cohorts are of Asian ancestry, one of Hispanic and one of African ancestry.

Genotyping and imputation to 1000G data. Details on the genotyping arrays used for each study cohort have been published before¹. At each study site, untyped SNPs were imputed on the basis of the 1000 genomes phase 1 version 3 reference panel¹⁹. Although this reference panel includes insertion and deletion variants (indels), these were excluded from further analyses. Prior to any quality control, there were 1,193,934 SNPs available for the non-pseudo-autosomal region of chromosome X.

Quality control. Quality control at subject level and at variant level was performed at each study site prior to imputation and association analysis as described previously¹. In addition to quality criteria typically used for analyses of autosomal SNPs^{20,21}, all subjects for whom the genotypic and reported sex could not be assigned unambiguously were excluded. Post-imputation quality control at SNP level was done centrally and in the same manner for all contributing studies. Here, SNPs were excluded if one of the following criteria was fulfilled: (1) $\geq 25\%$ missing genotypes in either female or male cases or controls, (2) deviation from Hardy-Weinberg equilibrium in female controls with $p < 0.0001$, (3) minor allele frequency $< 1\%$ in either males or females, and (4) imputation quality score (INFO for IMPUTE²²⁻²⁵ and r^2 for Minimac^{22,26}) < 0.5 . For sensitivity analysis, we additionally applied stricter criteria for imputation quality (INFO > 0.7) and missing genotypes ($< 2\%$ in either female or male cases or controls).

Study-wise association analysis. Study-wise association analyses were calculated at each study site. Logistic regression models with additive scoring for the SNP were used. The sex-specific structure of X-chromosomal data implies different variances in male and female sub-samples. To account for this, sex needs to be included as a covariate in the model. In addition, interactions between SNP and sex were investigated. Where appropriate, additional covariates to adjust for population stratification have been included in the model, for example in the form of variables calculated from a principal component analysis or variables describing the ethnic background of the subjects.

Since one of the two female X-chromosomes may or may not be inactivated at a specific locus, models were calculated that assumed inactivation as well as not assuming inactivation. If inactivation is present at a locus, two risk alleles of a female subject should show similar expression levels as compared to one risk allele in a male individual. Therefore, while the female genotypes for such a SNP are coded 0, 1 or 2, according to 0, 1 or 2 alleles, the genotypes for males should be coded 0 or 2 according to 0 or 1 alleles. If no inactivation occurs, the expression levels of one allele in females should be the same as one allele in males. Therefore, while the coding of female genotypes is unchanged, male genotypes should now be coded 0 or 1, according to 0 or 1 alleles. As an alternative to assuming complete or no inactivation approach, Wang *et al.*²⁷ proposed likelihood ratio tests for the situation of non-random or skewed inactivation, which can be more powerful in the case of non-random inactivation. However, given that the gain in power is small and that these tests are available in Matlab²⁸ only, which was not available for many of the participating study sites, we refrained from using this particular approach. These considerations resulted in four models being investigated (Table 2).

Post-hoc quality control. After calculation of the association analyses for each single study, post-hoc quality control was applied for all studies. To control for population stratification or other sources of inflation of p-values, inflation factors according to Devlin and Roeder⁴ were calculated, and plots of expected versus observed test statistics were inspected visually. In addition, for each SNP, mean EAFs over all studies were calculated and compared to the study-wise EAFs. SNPs with extreme deviations (> 0.1 , corresponding to more than 4 standard deviations) from the mean EAF were excluded from further analyses. Finally, only SNPs for which at least half of the studies were available were included in the meta-analyses.

Meta-analyses. For the meta-analyses of the 35 studies, random effect models were calculated for each of the four models defined in Table 2. In the same way, meta-analyses of the effect estimates for the SNP²sex interaction were performed. In all of these analyses, outlier analyses according to Preuß *et al.*²⁰ were performed to exclude studies with extremely inflated effect estimates.

Model	Mathematical description ^a	SNP*sex interaction	Coding of SNP	Inactivation
I	$\text{Logit}(\text{CAD}) = \beta_0 + \beta_1 \cdot \text{SNP} + \beta_2 \cdot \text{sex}$	No	Females: 0, 1, or 2; Males: 0 or 1	No
II	$\text{Logit}(\text{CAD}) = \beta_0 + \beta_1 \cdot \text{SNP} + \beta_2 \cdot \text{sex}$	No	Females: 0, 1, or 2; Males: 0 or 2	Yes
III	$\text{Logit}(\text{CAD}) = \beta_0 + \beta_1 \cdot \text{SNP} + \beta_2 \cdot \text{sex} + \beta_3 \cdot \text{SNP} \cdot \text{sex}$	Yes	Females: 0, 1, or 2; Males: 0 or 1	No
IV	$\text{Logit}(\text{CAD}) = \beta_0 + \beta_1 \cdot \text{SNP} + \beta_2 \cdot \text{sex} + \beta_3 \cdot \text{SNP} \cdot \text{sex}$	Yes	Females: 0, 1, or 2; Males: 0 or 2	Yes

Table 2. Association models for chromosome X. ^aFor each study, further covariates to adjust for population stratification have been added to the model where appropriate.

Sensitivity and subgroup analyses. We conducted the following sensitivity and subgroup analyses: (1) Subgroup analyses of males and females separately with subsequent meta-analyses to gain further insight into sex-specific effects; (2) Subgroup meta-analysis including only the 31 studies with European background; (3) Meta-analysis of SNPs fulfilling stricter quality criteria as described above.

Power estimation. Using the software Quanto, version 1.2.4²⁹, we estimated the power of our analyses in two ways. Firstly, to take into account our entire sample of males and females, a simple combination of the data is not possible due to the sex-specific structure of X chromosomal variants. We therefore followed Clayton³⁰ in assuming that the variance in males has twice the size of that in females in the additive model assuming inactivation. Therefore, we assumed that the effective sample size in males is halved, and this was added to the female sample size. Power was then estimated as a function of the odds ratio and the EAF at a significance level of $\alpha = 5 \cdot 10^{-8}$, a disease prevalence $k_p = 0.1$, and a log-additive genetic model. Secondly, we estimated the power for the smallest subgroup analyzed, i.e. the subgroup of females. The parameters in Quanto were set to the same values as before.

References

- CARDIoGRAMplusC4D-Consortium. A comprehensive 1000 Genomes-based genome-wide association meta-analysis of coronary artery disease. *Nat. Genet.* **47**, 1121–1130 (2015).
- König, I. R., Loley, C., Erdmann, J. & Ziegler, A. How to include chromosome X in your genome-wide association study. *Genet. Epidemiol.* **38**, 97–103 (2014).
- Solimene, M. C. Coronary heart disease in women: a challenge for the 21st century. *Clinics (Sao Paulo)* **65**, 99–106 (2010).
- Devlin, B. & Roeder, K. Genomic control for association studies. *Biometrics* **55**, 997–1004 (1999).
- Hindorf, L. *et al.* A Catalog of Published Genome-Wide Association Studies www.genome.gov/gwastudies (2014).
- Welter, D. *et al.* The NHGRI GWAS Catalog, a curated resource of SNP-trait associations. *Nucleic Acids Res.* **42**, D1001–D1006 (2014).
- Coronary Artery Disease Genetics Consortium. A genome-wide association study in Europeans and South Asians identifies five new loci for coronary artery disease. *Nat. Genet.* **43**, 339–344 (2011).
- Carrel, L. & Willard, H. F. X-inactivation profile reveals extensive variability in X-linked gene expression in females. *Nature* **434**, 400–404 (2005).
- Wong, C. C. *et al.* A longitudinal twin study of skewed X chromosome inactivation. *PLoS One* **6**, e17873 (2011).
- Tukiainen, T. *et al.* Chromosome X-wide association study identifies Loci for fasting insulin and height and evidence for incomplete dosage compensation. *PLoS Genet.* **10**, e1004127 (2014).
- de Vries, P. S. *et al.* A meta-analysis of 120 246 individuals identifies 18 new loci for fibrinogen concentration. *Hum. Mol. Genet.* **25**, 358–370 (2016).
- Mägi, R., Lindgren, C. M. & Morris, A. P. Meta-analysis of sex-specific genome-wide association studies. *Genet. Epidemiol.* **34**, 846–853 (2010).
- Loley, C., Ziegler, A. & König, I. R. Association tests for X-chromosomal markers—a comparison of different test statistics. *Hum. Hered.* **71**, 23–36 (2011).
- Chang, D. *et al.* Accounting for eXentricities: analysis of the X chromosome in GWAS reveals X-linked genes implicated in autoimmune diseases. *PLoS One* **9**, e113684 (2014).
- Wise, A. L., Gyi, L. & Manolio, T. A. eXclusion: toward integrating the X chromosome in genome-wide association analyses. *Am. J. Hum. Genet.* **92**, 643–647 (2013).
- The 1000 Genomes Project Consortium. An integrated map of genetic variation from 1,092 human genomes. *Nature* **491**, 56–65 (2012).
- Winham, S. J., de Andrade, M. & Miller, V. M. Genetics of cardiovascular disease: Importance of sex and ethnicity. *Atherosclerosis* **241**, 219–228 (2015).
- Chow, J. C., Yen, Z., Ziesche, S. M. & Brown, C. J. Silencing of the mammalian X chromosome. *Annu. Rev. Genomics Hum. Genet.* **6**, 69–92 (2005).
- Howie, B. & Marchini, J. *1,000 Genomes haplotypes – Phase I integrated variant set release (v3) in NCBI build 37 (hg19) coordinates* https://mathgen.stats.ox.ac.uk/impute/data_download_1000G_phase1_integrated.html (2012).
- Preuss, M. *et al.* Design of the Coronary ARtery Disease Genome-Wide Replication And Meta-Analysis (CARDIoGRAM) Study: A Genome-wide association meta-analysis involving more than 22 000 cases and 60 000 controls. *Circ. Cardiovasc. Genet.* **3**, 475–483 (2010).
- Ziegler, A. Genome-wide association studies: quality control and population-based measures. *Genet. Epidemiol.* **33** Suppl 1, S45–S50 (2009).
- Howie, B., Fuchsberger, C., Stephens, M., Marchini, J. & Abecasis, G. R. Fast and accurate genotype imputation in genome-wide association studies through pre-phasing. *Nat. Genet.* **44**, 955–959 (2012).
- Howie, B. & Marchini, J. *IMPUTE2* https://mathgen.stats.ox.ac.uk/impute/impute_v2.html (2014).
- Howie, B., Marchini, J. & Stephens, M. Genotype imputation with thousands of genomes. *G3 (Bethesda)* **1**, 457–470 (2011).
- Marchini, J. & Howie, B. Genotype imputation for genome-wide association studies. *Nat. Rev. Genet.* **11**, 499–511 (2010).
- Fuchsberger, C., Abecasis, G. R. & Hinds, D. A. minimac2: faster genotype imputation. *Bioinformatics* **31**, 782–784 (2015).
- Wang, J., Yu, R. & Shete, S. X-chromosome genetic association test accounting for X-inactivation, skewed X-inactivation, and escape from X-inactivation. *Genet. Epidemiol.* **38**, 483–493 (2014).
- Mathworks. *Matlab* <http://www.mathworks.com/products/matlab/> (2016).
- Morris, J. & Gauderman, J. *Software by USC Biostats* <http://biostats.usc.edu/software> (2016).
- Clayton, D. Testing for association on the X chromosome. *Biostatistics* **9**, 593–600 (2008).

Acknowledgements

This work was supported by the German Federal Ministry of Education and Research (BMBF) within the framework of the e:Med research and funding concept (grant 01ZX1313A-2014). The ADVANCE study was supported by a grant from the Reynold's Foundation and NHLBI grant HL087647. Sample collection in the Cardiogenics Consortium (<http://www.cardiogenics.eu/web/>) was funded by the 6th Framework Program of the European Union (LSHM-CT-2006-037593). We thank all the participants and clinicians involved in the recruitment process at Cambridge and Leicester (UK), Luebeck and Regensburg (Germany), and Paris (France). CATHGEN was supported by NIH grants HL095987 and HL101621. The Cleveland Clinic Gene Bank study was funded by P01HL076491 (to S.L.H.). EGCUT was supported by Estonian Research Council grant no. IUT20-60 and Research Roadmap grant no. 3.2.0304.11-0312 and by University Tartu grant no. ARENG SP1GV. The FGENTCARD-Functional Genomic diagnostic tools for coronary artery disease project was funded by an EU FP6 award. We thank the patients for agreeing to participate in the study. We thank Sonia Youhanna, Nour Moukalled and Bariaa Khalil for their help with subject recruitment and data collection. The work of FINCAVAS was supported by the Competitive Research Funding of the Tampere University Hospital (Grant 9M048 and 9N035), the Finnish Cultural Foundation, the Finnish Foundation for Cardiovascular Research, the Emil Aaltonen Foundation, Finland, and the Tampere Tuberculosis Foundation. The authors thank the staff of the Department of Clinical Physiology for collecting the exercise test data. The GerMIFS studies were supported by grants from the German Federal Ministry of Education and Research (BMBF) within the framework of NGFN and NGFN-plus (Atherogenomics) and e:Med research and funding concept (e:AtheroSysMed, grant 01ZX1313A-2014), the Fondation Leducq (CADgenomics: Understanding CAD Genes, 12CVD02), and the European Union Sixth Framework Programme FP6 (under grant agreement FP6-LIFESCIHEALTH (Cardiogenics)) and the Seventh Framework Programme FP7/2007-2013 under grant agreement n° HEALTH-F2-2013-601456 (CVgenes-at-target). The Heart Protection Study (HPS) (ISRCTN48489393) was supported by the UK Medical Research Council (MRC), British Heart Foundation, Merck and Co (manufacturers of simvastatin), and Roche Vitamins Ltd (manufacturers of vitamins). Genotyping was supported by a grant to Oxford University and CNG from Merck and Co. Jemma C. Hopewell acknowledges support from the British Heart Foundation (FS/14/55/30806). HPS acknowledges the National Blood Service (NBS) donors and UK Twin study for using as population controls. A full list of the investigators who contributed to the generation of the NBS data is available from www.wtccc.org.uk. Funding for the project was provided by the Wellcome Trust under award 07611. The UK Twin study was funded by the Wellcome Trust; European Community's Seventh Framework Programme (FP7/2007-2013). The Helsinki Sudden Death Study (HSDS) was financially supported by EU's 7th Framework Programme (grant no. 201668 for AtheroRemo), the Tampere University Foundation, the Tampere University Hospital Medical Funds (grants X51001, 9M048 and 9N035 for Terho Lehtimäki, the Emil Aaltonen Foundation (Terho Lehtimäki, the Finnish Foundation of Cardiovascular Research (Terho Lehtimäki, Pekka J. Karhunen), the Pirkanmaa Regional Fund of the Finnish Cultural Foundation, the Yrjö Jahnsson Foundation, and the Tampere Tuberculosis Foundation (Terho Lehtimäki). LIFE-Heart is a part of the LIFE - Leipzig Research Center for Civilization Diseases, Universität Leipzig. LIFE is funded by means of the European Union, by the European Regional Development Fund (ERDF) and by means of the Free State of Saxony within the framework of the excellence initiative. The LOLIPOP study is supported by the National Institute for Health Research (NIHR) Comprehensive Biomedical Research Centre Imperial College Healthcare NHS Trust, the British Heart Foundation (SP/04/002), the Medical Research Council (G0601966, G0700931), the Wellcome Trust (084723/Z/08/Z), the NIHR (RP-PG-0407-10371), European Union FP7 (EpiMigrant, 279143) and Action on Hearing (G51). We thank the participants and research staff who made the study possible. LURIC was supported by the 7th Framework Program (integrated project AtheroRemo, grant agreement number 201668 and RiskyCAD, grant agreement number 305739) of the European Union and by the INTERREG IV Oberrhein Program (Project A28, Genetic mechanisms of cardiovascular diseases) with support from the European Regional Development Fund (ERDF) and the Wissenschaftsoffensive TMO. We extend our appreciation to the participants of the LURIC study and thank the LURIC study team who were either temporarily or permanently involved in patient recruitment as well as sample and data handling, in addition to the laboratory staff at the Ludwigshafen General Hospital and the Universities of Freiburg and Ulm, Germany. The MIGN study was funded by R01HL087676 from the US National Heart, Lung, and Blood Institute. The Mount Sinai IPM Biobank Program is supported by The Andrea and Charles Bronfman Philanthropies. It was in part supported by NHGRI U01HG007417. OHGS_A2, OHGS_B2, and OHGS_C2 were funded by Canadian Institutes of Health Research (# MOP-2380941 to R.M.), (#MOP82810, MOP77682 to R.R., A.F.S. & R.M.); Canada Foundation for Innovation (#11966 to R.R., R.M. & A.F.S.; Heart & Stroke Foundation of Canada (#NA6001, #NA6650 to R.M.). PIVUS was supported by Knut and Alice Wallenberg Foundation (Wallenberg Academy Fellow), European Research Council (ERC Starting Grant), Swedish Diabetes Foundation (grant no. 2013-024), Swedish Research Council (grant no. 2012-1397), and Swedish Heart-Lung Foundation (20120197). We thank the SNP&SEQ Technology Platform in Uppsala (www.genotyping.se) for excellent genotyping. The computations were performed on resources provided by SNIC through Uppsala Multidisciplinary Center for Advanced Computational Science (UPPMAX) under Project b2011036. PROCARDIS was supported by the European Community Sixth Framework Program (LSHM-CT-2007-037273), AstraZeneca, the British Heart Foundation, the Swedish Research Council, the Knut and Alice Wallenberg Foundation, the Swedish Heart-Lung Foundation, the Torsten and Ragnar Söderberg Foundation, the Strategic Cardiovascular Program of Karolinska Institutet and Stockholm County Council, the Foundation for Strategic Research and the Stockholm County Council (560283). Research in SDS was partly supported by NIH grants -R01DK082766 funded by the National Institute of Diabetes and Digestive and Kidney Diseases and NOT-HG-11-009 funded by National Genome Research Institute, and VPR Bridge grant from University of Oklahoma Health Sciences Center, Oklahoma City, USA. Recruitment for THISEAS was partially funded by a research grant (PENED 2003) from the Greek General Secretary of Research and Technology; we

thank all the dieticians and clinicians for their contribution to the project. TwinGene was supported by grants from the Ministry for Higher Education, the Swedish Research Council (M-2005-1112 and 2009-2298), GenomEUtwin (EU/QLRT-2001-01254; QLG2-CT-2002-01254), NIH grant DK U01-066134, Knut and Alice Wallenberg Foundation (Wallenberg Academy Fellow), European Research Council (ERC Starting Grant), Swedish Diabetes Foundation (grant no. 2013-024), Swedish Research Council (grant no. 2012-1397), and Swedish Heart-Lung Foundation (20120197). We thank the SNP&SEQ Technology Platform in Uppsala (www.genotyping.se) for excellent genotyping. The computations were performed on resources provided by SNIC through Uppsala Multidisciplinary Center for Advanced Computational Science (UPPMAX) under Project b2011036. ULSAM was supported by Knut and Alice Wallenberg Foundation (Wallenberg Academy Fellow), European Research Council (ERC Starting Grant), Swedish Diabetes Foundation (grant no. 2013-024), Swedish Research Council (grant no. 2012-1397), and Swedish Heart-Lung Foundation (20120197). We thank the SNP&SEQ Technology Platform in Uppsala (www.genotyping.se) for excellent genotyping. The computations were performed on resources provided by SNIC through Uppsala Multidisciplinary Center for Advanced Computational Science (UPPMAX) under Project b2011036. Recruitment for the WTCCC study was funded by the British Heart Foundation and genotyping by the Wellcome Trust. Themistocles L. Assimes was supported by an NIDDK career development award DK088942. Panos Deloukas's work forms part of the research themes contributing to the translational research portfolio of Barts Cardiovascular Biomedical Research Unit which is supported and funded by the National Institute for Health Research. Analysis was partly supported by BHF grant (to Panos Deloukas) RG/14/5/30893. Martin Farrall and Hugh Watkins acknowledge the support of the Wellcome Trust core award (090532/Z/09/Z) and Martin Farrall, Hugh Watkins and Theodosios Kyriakou, the BHF Centre of Research Excellence. Anuj Goel, Hugh Watkins and Theodosios Kyriakou acknowledge European Union Seventh Framework Programme FP7/2007-2013 under grant agreement no. HEALTH-F2-2013-601456 (CVGenes@Target) & and Anuj Goel, the Wellcome Trust Institutional strategic support fund. The UK Twin study was funded by the Wellcome Trust; European Community's Seventh Framework Programme (FP7/2007-2013). PoBI samples from the Wellcome Trust funded People of the British Isles project. Sekar Kathiresan is supported by the Donovan Family Foundation, Fondation Leducq, MGH Research Scholar Award, and R01 HL107816. Andrew P. Morris is a Wellcome Trust Senior Fellow in Basic Biomedical Science, funded under grant WT098017. Christopher P. Nelson and Nilesh J. Samani are funded by the British Heart Foundation and Nilesh J. Samani is a UK NIHR Senior Investigator. Christopher P. Nelson and Nilesh J. Samani are funded by the British Heart Foundation and Nilesh J. Samani is a UK NIHR Senior Investigator. Samuli Ripatti was supported by the Academy of Finland Center of Excellence in Complex Disease Genetics (Grant No. 213506 and 129680), Academy of Finland (Grant No. 251217 and 285380), the Finnish foundation for Cardiovascular Research, the Sigrid Juselius Foundation and the European Community's Seventh Framework Programme (FP7/2007-2013) through the BioSHaRE-EU (Biobank Standardisation and Harmonisation for Research Excellence in the European Union) project, grant agreement 261433. Alexandre F. R. Stewart is supported by operating grants from the Canadian Institute of Health Research and Natural Sciences and Engineering Research Council of Canada. Hong-Hee Won is supported by a postdoctoral award from the American Heart Association (15POST23280019).

Author Contributions

C.L., I.R.K., J.E. and H.S. conceived the idea and the design of the study. I.R.K. and J.E. recruited the participating studies for the meta-analysis. C.L., M.A., T.L.A., A.B., A.G., S.G., J.H., J.C.H., S.K., M.E.K., K.W.L., Y.L., L.P.L., C.P.N., M.N., L.Q., E.S., M.S., T.T., C.W., H.H.W., L.Z., W.Z., S.S.A., F.B., E.P.B., R.C., G.D., R.D., T.E., M.E., M.F., D.G., V.G., C.B.G., A.S.H., A.H., S.L.H., J.H., M.K., T.K., P.R.L., L.L., C.L., P.K.E.M., E.M., E.M., A.P.M., K.N., N.P., L.R., V.S., S.H.S., A.F.R.S., J.R.T., P.A.Z., J.C.C., R.C., E.I., C.I., P.J.K., J.S.K., T.L., R.J.F.L., W.M., R.M., A.M., M.P.R., S.R., D.K.S., J.T., H.W., P.D., S.K., N.J.S., H.S., J.E. and I.R.K. contributed to the data analysis on single study level. C.L. checked all single study data for validity and did all calculations and programming for the meta-analysis including quality control. C.L. and I.R.K. wrote the manuscript. C.L., M.A., T.L.A., A.B., A.G., S.G., J.H., J.C.H., S.K., M.E.K., K.W.L., Y.L., L.P.L., C.P.N., M.N., L.Q., E.S., M.S., T.T., C.W., H.H.W., L.Z., W.Z., S.S.A., F.B., E.P.B., R.C., G.D., R.D., T.E., M.E., M.F., D.G., V.G., C.B.G., A.S.H., A.H., S.L.H., J.H., M.K., T.K., P.R.L., L.L., C.L., P.K.E.M., E.M., E.M., A.P.M., K.N., N.P., L.R., V.S., S.H.S., A.F.R.S., J.R.T., P.A.Z., J.C.C., R.C., E.I., C.I., P.J.K., J.S.K., T.L., R.J.F.L., W.M., R.M., A.M., M.P.R., S.R., D.K.S., J.T., H.W., P.D., S.K., N.J.S., H.S., J.E. and I.R.K. contributed to the interpretation of the results of the meta-analysis and reviewed the manuscript.

Additional Information

Supplementary information accompanies this paper at <http://www.nature.com/srep>

Competing financial interests: The authors declare no competing financial interests.

How to cite this article: Loley, C. *et al.* No Association of Coronary Artery Disease with X-Chromosomal Variants in Comprehensive International Meta-Analysis. *Sci. Rep.* **6**, 35278; doi: 10.1038/srep35278 (2016).



This work is licensed under a Creative Commons Attribution 4.0 International License. The images or other third party material in this article are included in the article's Creative Commons license, unless indicated otherwise in the credit line; if the material is not included under the Creative Commons license, users will need to obtain permission from the license holder to reproduce the material. To view a copy of this license, visit <http://creativecommons.org/licenses/by/4.0/>

© The Author(s) 2016