

WILEY

Online Proofing System Instructions

The Wiley Online Proofing System allows authors and proof reviewers to review PDF proofs, mark corrections, respond to queries, upload replacement figures, and submit these changes directly from the PDF proof from the locally saved file or while viewing it in your web browser.

1. For the best experience reviewing your proof in the Wiley Online Proofing System please ensure you are connected to the internet. This will allow the PDF proof to connect to the central Wiley Online Proofing System server. If you are connected to the Wiley Online Proofing System server you should see the icon with a green check mark above in the yellow banner.
2. Please review the article proof on the following pages and mark any corrections, changes, and query responses using the Annotation Tools outlined on the next 2 pages.

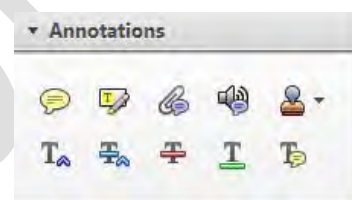


Connected



Disconnected

3. To save your proof corrections, click the “Publish Comments” button appearing above in the yellow banner. Publishing your comments saves your corrections to the Wiley Online Proofing System server. Corrections don’t have to be marked in one sitting, you can publish corrections and log back in at a later time to add more before you click the “Complete Proof Review” button below.

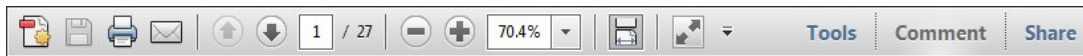


4. If you need to supply additional or replacement files bigger than 5 Megabytes (MB) do not attach them directly to the PDF Proof, please click the “Upload Files” button to upload files:
5. When your proof review is complete and you are ready to submit corrections to the publisher, please click the “Complete Proof Review” button below:

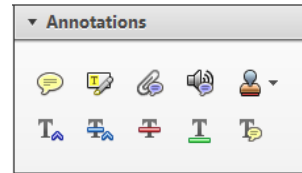
IMPORTANT: Do not click the “Complete Proof Review” button without replying to all author queries found on the last page of your proof. Incomplete proof reviews will cause a delay in publication.

IMPORTANT: Once you click “Complete Proof Review” you will not be able to publish further corrections.

Once you have Acrobat Reader open on your computer, click on the [Comment](#) tab at the right of the toolbar:



This will open up a panel down the right side of the document. The majority of tools you will use for annotating your proof will be in the [Annotations](#) section, pictured opposite. We've picked out some of these tools below:



1. [Replace \(Ins\)](#) Tool – for replacing text.

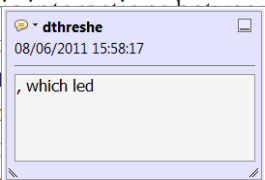


Strikes a line through text and opens up a text box where replacement text can be entered.

How to use it

- Highlight a word or sentence.
- Click on the [Replace \(Ins\)](#) icon in the Annotations section.
- Type the replacement text into the blue box that appears.

standard framework for the analysis of microeconomic activity. Nevertheless, it also led to the development of a new paradigm of strategic behavior. The number of competitors in the industry is that the structure of the industry is a key component of the main components of the industry. At the industry level, are exogenous variables important? (M henceforth) we open the 'black b



2. [Strikethrough \(Del\)](#) Tool – for deleting text.



Strikes a red line through text that is to be deleted.

How to use it

- Highlight a word or sentence.
- Click on the [Strikethrough \(Del\)](#) icon in the Annotations section.

there is no room for extra profits as mark-ups are zero and the number of firms (net) values are not determined by market structure. Blanchard ~~and Kiyotaki~~ (1987), perfect competition in general equilibrium. The effects of aggregate demand and supply shocks in the classical framework assuming monopolistic competition. An exogenous number of firms

3. [Add note to text](#) Tool – for highlighting a section to be changed to bold or italic.



Highlights text in yellow and opens up a text box where comments can be entered.

How to use it

- Highlight the relevant section of text.
- Click on the [Add note to text](#) icon in the Annotations section.
- Type instruction on what should be changed regarding the text into the yellow box that appears.

dynamic responses of mark-ups consistent with the VAR evidence

satisfactory. Many studies have found that the number of competitors and the impact of aggregate demand on the structure of the sector



4. [Add sticky note](#) Tool – for making notes at specific points in the text.

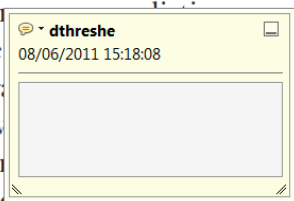


Marks a point in the proof where a comment needs to be highlighted.

How to use it

- Click on the [Add sticky note](#) icon in the Annotations section.
- Click at the point in the proof where the comment should be inserted.
- Type the comment into the yellow box that appears.

aggregate demand and supply shocks. Most of the literature on the impact of aggregate demand on the structure of the sector is that the structure of the sector



5. **Attach File** Tool – for inserting large amounts of text or replacement figures.

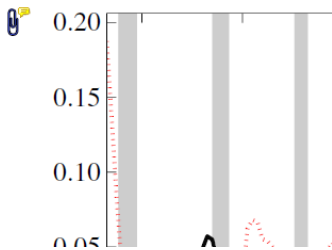


Inserts an icon linking to the attached file in the appropriate place in the text.

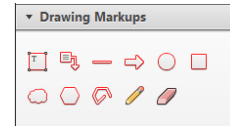
How to use it

- Click on the **Attach File** icon in the Annotations section.
- Click on the proof to where you'd like the attached file to be linked.
- Select the file to be attached from your computer or network.
- Select the colour and type of icon that will appear in the proof. Click OK.

END

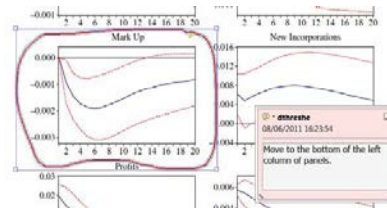


6. **Drawing Markups** Tools – for drawing shapes, lines and freeform annotations on proofs and commenting on these marks. Allows shapes, lines and freeform annotations to be drawn on proofs and for comment to be made on these marks.



How to use it

- Click on one of the shapes in the Drawing Markups section.
- Click on the proof at the relevant point and draw the selected shape with the cursor.
- To add a comment to the drawn shape, move the cursor over the shape until an arrowhead appears.
- Double click on the shape and type any text in the red box that appears.



REVIEW ARTICLE

Fibroblast activation and senescence in oral cancer

S. S. Prime¹, N. Cirillo², Y. Hassona³, D. Lambert⁴, I. C. Paterson⁵, M. Mellone⁶, G. J. Thomas⁶,
E. N. L. James¹, E. K. Parkinson¹

¹Centre for Clinical and Diagnostic Oral Sciences, Institute of Dentistry, Barts and the London School of Medicine and Dentistry, Queen Mary University of London, London, UK; ²Melbourne Dental School and Oral Health CRC, University of Melbourne, Carlton, VIC, Australia; ³Department of Dentistry, University of Jordan, Amman, Jordan; ⁴School of Clinical Dentistry, University of Sheffield, Sheffield, UK; ⁵Department of Oral Biology and Biomedical Sciences and Oral Cancer Research and Co-ordinating Centre, Faculty of Dentistry, University of Malaya, Kuala Lumpur, Malaysia; ⁶Faculty of Medicine, University of Southampton, Southampton, UK

There is now compelling evidence that the tumour stroma plays an important role in the pathogenesis of cancers of epithelial origin. The pre-eminent cell type of the stroma is carcinoma-associated fibroblasts. These cells demonstrate remarkable heterogeneity with activation and senescence being common stress responses. In this review, we summarise the part that these cells play in cancer, particularly oral cancer, and present evidence to show that activation and senescence reflect a unified programme of fibroblast differentiation. We report advances concerning the senescent fibroblast metabolome, mechanisms of gene regulation in these cells and ways in which epithelial cell adhesion is dysregulated by the fibroblast secretome. We suggest that the identification of fibroblast stress responses may be a valuable diagnostic tool in the determination of tumour behaviour and patient outcome. Further, the fact that stromal fibroblasts are a genetically stable diploid cell population suggests that they may be ideal therapeutic targets and early work in this context is encouraging.

J Oral Pathol Med (2016)

Keywords: activation; cancer; fibroblasts; oral; senescence

Introduction

Head and neck cancer, including oral squamous cell carcinoma (OSCC), accounts for some 600 000 new cancer cases annually worldwide with a rising incidence in many countries. Only 50% of patients survive 5 years, a figure that largely reflects the tumour stage at presentation, locoregional invasion and recurrence, distant metastases

and the development of 2nd primary tumours. Survival improves when tumours are detected early but the majority of patients present with advanced metastatic disease and have a poor prognosis (1). There is an urgent need, therefore, to develop new techniques for early diagnosis and to develop new therapeutic modalities.

Recently, Parkinson and colleagues developed a new paradigm of OSCC and identified genetically stable (GS-OSCC) and genetically unstable (GU-OSCC) epithelial subtypes in cell culture, with the latter being associated with marked LOH and gene copy number alterations, together with loss of *TP53* and inactivation of *CDKN2A* (p16^{INK4A}) (2–5). Therefore, with respect to changes in *TP53* and *CDKN2A*, the molecular characteristics of the GU-OSCC cell lines resemble the recently published data on smoking-related head and neck cancers (6). Diploid cancer-associated fibroblasts (CAFs) from isotypic biopsies of GS-OSCC, GU-OSCC and fibroblasts from normal oral mucosa have been isolated from these tissues and have served as useful tools to investigate the interaction between stromal fibroblasts and cancer epithelium.

It is now recognised that solid tumours are not simply clonally evolved epithelial cells that have accumulated a critical number of cancer-driving or cancer-facilitating mutations but rather operate as dysfunctional tissues where the mesenchymal component plays an important role in tumour pathogenesis (7). The stromal compartment consists of a variety of different cell types (fibroblasts, pericytes, smooth muscle and endothelial cells, pre-adipocytes and cells of the immune system) but fibroblasts are pre-eminent. The present report focuses on two common stress responses in CAFs, namely activation and senescence, because despite having distinct morphologies, both cell types have tumour-promoting capabilities. We believe that it is now timely to review the recent advances that demonstrate that fibroblast activation and senescence are fundamental to the pathogenesis of oral cancer and have clinical importance. A glossary of terms where abbreviations have been used is included for clarification (Table 1).

Correspondence: Stephen Stewart Prime, Centre for Clinical and Diagnostic Oral Sciences, Institute of Dentistry, Barts and the London School of Medicine and Dentistry, Queen Mary University of London, Turner Street, London E1 2AD, UK. Tel: xxxxx, Fax: xxxxx, E-mail: stephen-sprime@gmail.com

Accepted for publication April 28, 2016

Table 1 Glossary of terms

Abbreviation	Name	Abbreviation	Name
α -SMA	α Smooth muscle actin	IGF2	Insulin-like growth factor 2
NG2	Neural/glia antigen 2	BMP4	Bone morphogenic protein 4
PDGF	Platelet-derived growth factor	MMP	Matrix metalloproteinase
FSP	Fibroblast-specific protein	PGE2	Prostaglandin E2
FAP	Fibroblast-activating protein	KGF	Keratinocyte growth factor
TGF- β	Transforming growth factor- β	CSL	CBF1; Suppressor of hairless; Lag-1
TNF- α	Tumour necrosis factor- α	AP-1	Activator protein 1 transcription factor composed of c-Fos, c-Jun, ATF and JDP family members
IL-1; IL-33	Interleukin 1/33	NF- κ B	Nuclear factor κ -light chain-enhancer of activated B cells
CCL7	Chemokine (C-C motif) ligand 7	NRF2	NFE2; Nuclear factor (erythroid-derived 2)-like 2
SDF-1	Stromal cell-derived factor 1	TERT	Telomere reverse transcriptase
BDNF	Brain-derived growth factor	VEGF	Vascular endothelial growth factor
HGF	Hepatocyte growth factor	ROS	Reactive oxygen species

Fibroblast activation

Identification and origin

In 1971, the presence of modified fibroblasts was described in healing wounds and due to their similarity to smooth muscle cells, they were termed myofibroblasts (8). In cancer, these modified fibroblasts have been termed tumour-associated fibroblasts, activated fibroblasts and CAFs, the names being used interchangeably.

CAFs have been identified by several different markers including α -SMA, tenascin-C, periostin, NG-2, PDGF receptor- α/β , FSP (S100A4) and FAP. Markers such as vimentin, type I collagen, prolyl 4-hydroxylase and fibroblast surface protein are also used to detect various types of mesenchymal cells including CAFs. The likelihood is that these fibroblast markers, expressed alone or in combination, identify distinct subpopulations within CAFs (9). In oral cancer, we have shown that fibroblasts from GS-OSCC, GU-OSCC and normal oral mucosa express distinct transcriptional profiles (10), findings that overlap with observations by Partridge and colleagues who identified two distinct CAF populations in OSCC that induced epithelial invasion *in vitro* by different mechanisms (11).

Several cell types have been described as possible progenitors of CAFs (Fig. 1). Recently, a transgenic mouse model has been used to explore the cellular origins of CAFs; FSP-1+ and FAP+ fibroblasts were largely derived from bone marrow cells including mesenchymal stem cells, whereas α -SMA+ and NG2+ myofibroblasts originated from resident tissues primarily of adipocyte origin (12).

Induction and function

The induction of the activated CAF phenotype and the potentiation of tumour epithelial cell behaviour involves crosstalk between the tumour epithelium and stroma (13–15). Epithelial cancer cells activate CAFs, an interaction that is mediated by ligands such as TGF- β , TNF- α and IL-1 α/β . CAFs, in turn, release molecules such as TNF- α , IL-1 α/β , IL-33, CCL7, SDF-1, BDNF, Collagen 1, HGF, IGF2, BMP4, MMPs, PGE2, KGF, Activin A and PDGF, amongst others. Taken together, the pre-neoplastic cell growth (15), tumour cell migration and invasion, metastases, angiogenesis and immune escape (13, 14) and cancer therapy resistance (16) are promoted. For head and neck

cancer, the molecular basis of the interaction between cancer cells and CAFs has been extensively reviewed recently by Leef and Thomas (13).

The observation that the activated fibroblast phenotype is maintained after the removal of the fibroblasts from their tissue of origin and after prolonged cell culture suggests that there are irreversible genetic changes associated with this cell type. Whilst CAFs from GS-OSCC and GU-OSCC show no copy number alterations (10), CAFs are likely to sustain their protumorigenic phenotype by epigenetic mechanisms and/or miRNA-mediated gene regulation.

Epigenetic alterations, somatically heritable changes that are not due to DNA sequence conversions, have been reported in CAFs and include altered DNA methylation patterns and global hypomethylation (17). By contrast, micro-RNAs (miRNAs) are small (19–25 nucleotides) non-coding RNAs that regulate gene expression at the post-transcriptional level by hybridising to the complimentary, or partial complimentary, sites predominantly in the 3'UTR of their target genes; this results in translational inhibition or miRNA degradation. In so doing, miRNAs regulate diverse biological functions and have both tumour suppressive and oncogenic functions depending on their gene target (18). Whilst miRNAs are differentially expressed in ageing and cancer, there have been few studies that have examined the role of miRNAs in the development and maintenance of fibroblast stress responses. What is known suggests that miR-210, miR-21, miR-146a, miR-27, miR-155 and miR-200b are involved with fibroblast activation (19–21) whereas miR-210 and miR-146a are thought to play a role in fibroblast senescence (21, 22). In OSCC, the expression of miR-21 in the tumour stroma appears to be an independent biomarker of disease-free survival (23). Interestingly, one of the major risk factors of OSCC (cigarette smoke) also regulates specific miRNAs (24). The study of miRNA in malignancy and particularly in stromal cells, however, is in its infancy. The nature of the miRNA profile in isotypic cancer cells and CAFs has not been explored, the temporal nature of miRNA expression during the different stages of tumour progression is unknown, and data relating specifically to OSCC are only now starting to emerge. Our unpublished data reveal widespread changes in miRNA expression in both CAFs and senescent fibroblasts (D Lambert, personal communication).

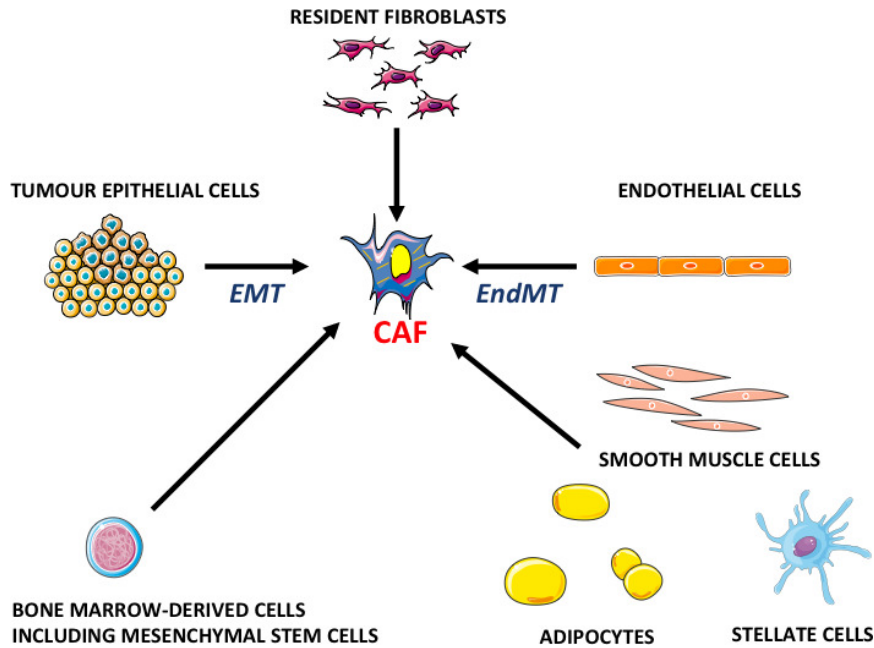


Figure 1 Source of carcinoma-associated fibroblasts.

What other factors regulate the tumour stroma? Interference with the Notch/CSL pathway (CSL is a DNA-binding protein with intrinsic repressive function that is converted into a transcriptional activator by activated Notch) in cancer cells, a common event in OSCC leads to the development of a CAF-like phenotype and fibroblast senescence suggesting that CSL may be acting as a repressor of multiple CAF and senescence effector genes. Concurrently, there is upregulation of pro-inflammatory cytokines and MMPs and ultimately widespread dermal atrophy, expanding areas of inflammation and carcinoma *in situ* formation (25). Other factors that are known to regulate the tumour stroma include AP-1 family members, NF- κ B and NRF2, but their significance in the pathogenesis of OSCC has yet to be determined.

Senescence in fibroblasts

Characteristics

In 1961, Hayflick (26) made the seminal observation that cultured human fibroblasts could not proliferate indefinitely and lost their ability to divide over many cell doublings despite being viable and metabolically active. The permanent growth arrest state is referred to as senescence and is distinguished from quiescence by elevation of p16^{INK4A}. Senescence is induced by a wide variety of stimuli other than exhaustive cell replication. Persistent DNA damage is a common theme, and factors that induce these changes include oxidative stress arising from mitochondrial dysfunction, overexpression of oncogenes leading to over-replication of the genome and uncontrolled cell division (27) and anticancer treatments such as chemotherapy and irradiation. The precise molecular mechanisms of senescence are well documented and beyond the scope of the present review (28).

Senescence is associated with shortening of telomeres, the six base repeats in DNA that protect the ends of

chromosomes with each round of replication. When telomeres reach a critical length, DNA double-strand breaks occur and DNA damage foci assemble. Telomere dysfunction can drive the activation of senescence. Mutations in telomere-specific structural proteins, for example, lead to premature ageing (29). Conversely, telomere length is maintained by the enzyme telomerase and the gene encoding the catalytic domain of human telomerase, TERT, can reconstitute telomerase activity, block telomere erosion and immortalise human fibroblasts without changing their karyotype or cell cycle checkpoints (30). The majority of tumours, irrespective of origin, overexpress telomerase, and the recent observation showing somatic mutations in the TERT promoter of OSCCs of the lateral border of the tongue (31) suggests that in this subset of cancers, telomerase is deregulated rather than being selected from the stem cell compartment, a phenomenon that occurs early in tumour development (32). The remaining human tumours, largely of mesenchymal origin, use an alternative mechanism (ALT) (33), but there is no evidence for a role of ALT in the pathogenesis of OSCC.

Function

In cancers of epithelial origin, senescence occurs when the damage to a cell is irreparable or overwhelms the DNA repair machinery and in this capacity, senescence acts as a valuable tumour suppressor. Tumour cells overcome this barrier in a process that involves inactivation of the p53 and p16^{INK4A}/pRB signalling pathways (34). By contrast, senescence in fibroblasts of the tumour stroma is tumour promoting. Coculture of either human senescent prostate or lung fibroblasts with their premalignant epithelial counterparts, for example, stimulates cell growth, migration and invasion (35).

The mechanism by which senescent cells in the microenvironment stimulate epithelial tumour progression has been

the focus of intense scrutiny in recent years. Significantly, senescent cells secrete a wide variety of protumorigenic proteins collectively referred to as the senescence-associated secretory phenotype (SASP) (36). The SASP is made up of soluble signalling factors consisting of receptors and ligands, chemokines, interleukins, inflammatory factors, ROS, growth factors and proteases, together with extracellular matrix proteins such as fibronectin, collagen and laminin. Among the myriad of factors that constitute the SASP, IL6 and IL8, MMPs, VEGF and osteopontin (37, 38) have all been associated with epithelial tumour progression in different systems (Fig. 2). In this context, fibroblast senescence has been shown to contribute to epithelial proliferation, differentiation, cellular metabolism and genetic instability, amongst others, and ultimately leads to the promotion of tumour cell invasion, metastases and therapeutic resistance. Interestingly, whilst fibroblast senescence induces an epithelial–mesenchymal transition (EMT) (37), recent data have shown that EMT is dispensable for invasion, metastases and the generation of cancer stem cells suggesting that it has a redundant role in these latter functions (39).

Our own work (40, 41), and that of others (42), have demonstrated that TGF- β is also a key mediator in senescent fibroblast–tumour cell interactions. We have shown that tumour-derived epithelial TGF- β acts in concert with ROS to induce fibroblast activation and senescence; fibroblasts from GU-OSCC appear to be particularly susceptible to oxidative DNA damage because of the high levels of fibroblast-derived ROS together with downregulation of antioxidant genes and upregulation of pro-oxidant genes (40). Once CAF senescence has been induced, CAF-derived TGF- β , in conjunction with MMP2, induces EMT in the tumour cells and downregulates a broad spectrum of epithelial cell adhesion molecules (e-cadherin, desmoglein 1 and 3, desmoplakin, desmocollin, β -catenin and

plakophilin) to cause keratinocyte discohesion and the promotion of epithelial invasion *in vitro* (N. Cirillo, manuscript submitted). Taken together with the recent findings that EMT is redundant for invasion and metastases (39), our findings suggest that whilst the loss of adhesion molecules is a characteristic of epithelial cancer cells and likely facilitates the general spread of a tumour, it is not the primary driving force in the capacity of these cells to gain access into lymphatics and blood vessels.

As stated, downregulation of the CSL/Notch pathway leads to fibroblast activation and senescence in both pre-malignant lesions (actinic keratosis) and overt carcinomas (25). It is only in carcinomas, however, where it is also associated with downregulation of *CDKN1A* and p53, the latter requiring additional paracrine influences (43). Extensive work by Campisi and colleagues has shown that the loss of p53 actually augments at least a subsection of the SASP including the interleukins (37), but the complete ablation of the senescence programme by the dual knockout of p53 and the p16^{INK4A} locus in mice suppresses the inflammatory response (44). Further, recent findings show that p38MAPK also controls the stability of SASP miRNAs (45). With regard to our own work, we have shown overexpression of p16^{INK4A} in senescent fibroblasts from GU-OSCC but not GS-OSCC (40) but the status of CSL/Notch and p38MAPK in these cells has not been investigated to date.

The fibroblast senescent metabolome

Recently, we completed a detailed, unbiased screen of the extracellular senescence metabolome (ESM) of oral CAFs (46) and identified alterations in several metabolites including increased levels of alanine, citrate, molecules involved in oxidative stress, a sterol, monohydroxy lipids, tryptophan metabolism, phospholipid and nucleotide

COLOR

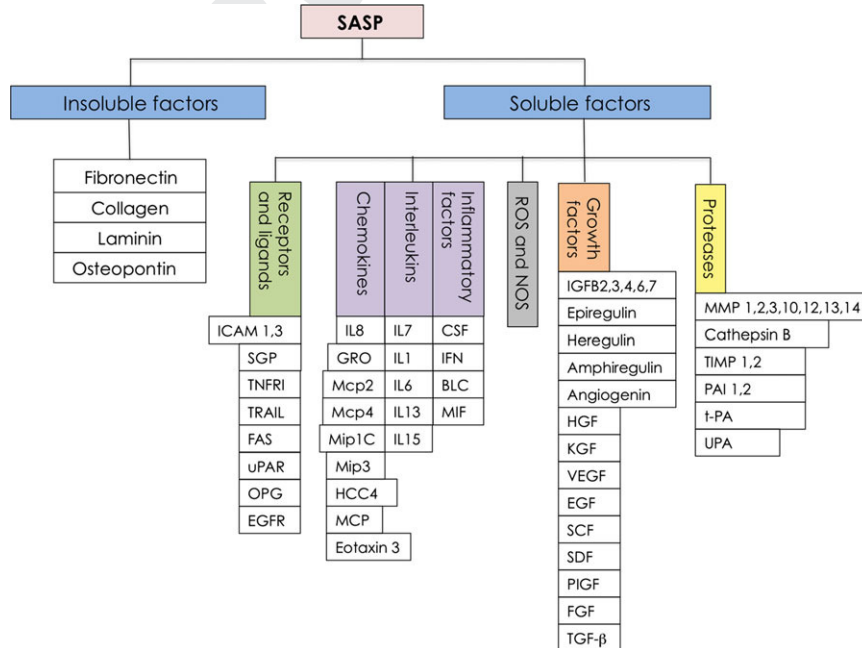


Figure 2 List of molecules that constitute the senescence-associated secretory phenotype.

catabolism, as well as reduced levels of dipeptides containing branch chain amino acids. Few of these metabolic products, however, have been revealed in studies of cancer serum metabolomics perhaps because of the great variation in cancer patient metabolism and other confounding factors such as age, body mass index, blood pressure, drugs and smoking. Further, most clinical studies on the serum metabolome have to date been seriously underpowered. Whilst serum alanine is emerging as a common biomarker of human cancer (47), elevated saliva alanine has been detected in only one study of oral malignancy and pre-malignancy and was not detected in a much larger study of serum from similar patient groups using different technology (48). Elevated saliva glycerophosphorylcholine was reported to be able to discriminate between oral cancer and periodontal disease as well as controls (49) but the number of samples was rather small. If this area is to be taken forward, it will be necessary to perform a metabolomics analysis of saliva in a large number of individuals in an analogous way to the Husermet project (Husermet characterised the human serum metabolome using mass spectrometry, chromatographic techniques, infrared spectroscopy and NMR to identify biomarkers of Alzheimer's disease and ovarian cancer.

What is also unclear at present is whether any of the ESM actually transfers phenotypes from senescent cells to other non-senescent cells. Lisanti and co-workers have provided persuasive evidence that lactate and ketones from glycolytic fibroblasts induced to undergo autophagy and senescence can provide an energy source for cancer cells in mixed cultures of the two cell types and in so doing, promote tumorigenicity and invasion (50). In our study, the most reliable senescence marker in the ESM was citrate although it was unable to induce alterations in growth or senescence on its own (46). Extracellular citrate is also induced by irreparable DNA damage and accumulates with advanced

age in humans; it is reduced in some mouse models of longevity (47). Another interesting role for citrate within the cell is to act as a substrate for ATP citrate lyase to produce acetyl CoA and this, in turn, is used as a source of lipids to generate membranes during senescence (51). Acetyl CoA is also used as a substrate for histidine acetylation, and so it is possible that intracellular citrate may contribute to the gradual epigenetic changes that occur in ageing tissue and senescent cells (52).

A unified programme

Mechanisms linking fibroblast activation and senescence are unknown. Nevertheless, there is circumstantial evidence that fibroblast activation and senescence may reflect different stages of the same pathway (40; M. Mellone, manuscript submitted). First, the gene expression profile of TGF- β -treated fibroblasts (activated) overlaps significantly with radiation-treated fibroblasts (senescent); the former are characterised by the expression of genes associated with the elaboration of the extracellular matrix, and the latter show enrichment of metabolic pathways. Second, treatment of oral fibroblasts with TGF- β leads to first activation and then senescence. Third, both activated and senescent CAFs upregulate cytoskeletal markers and develop a contractile SMA-positive phenotype. Fourth, CAF activation and senescence share common tumour-promoting activities. And fifth, the tumour-promoting capabilities of these cell phenotypes may be mediated through similar signalling pathways (25, 43, 45).

It is important to emphasise that what is common to the different fibroblast stress responses is the protumorigenic nature of their secretome. Interestingly, the expression of the SASP does not require cellular senescence. Cells defective in the p53 and pRB, pathways, for example, retain the ability to express the SASP in response to persistent DNA

LOW RESOLUTION COLOR FIG

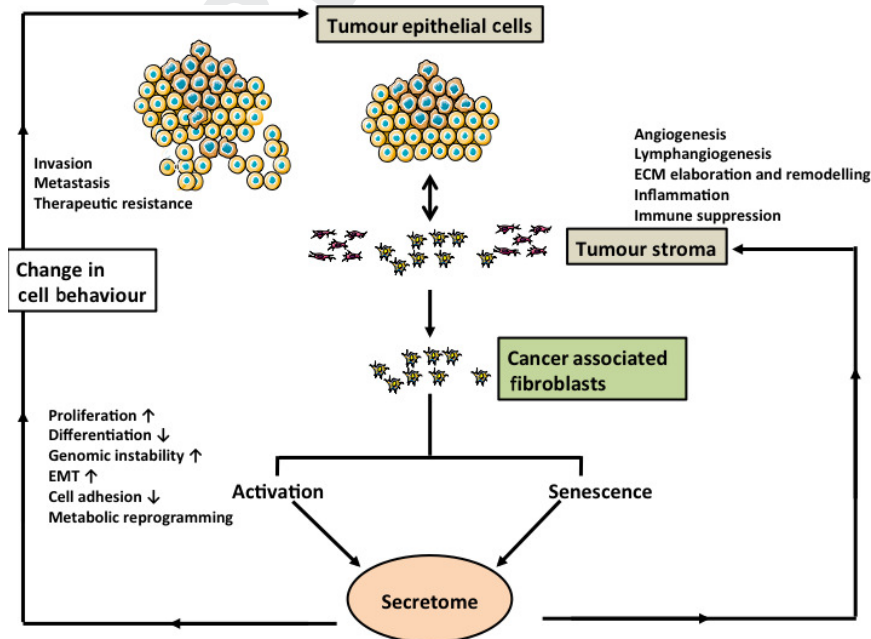


Figure 3 Function of fibroblast stress responses in the promotion of epithelial cancer and stromal development.

damage signalling (36) and senescence induced by ectopic expression of p16^{INK4A} or p21^{Cip1/WAF1} fails to activate the SASP (53). Nevertheless, the consequences of a fibroblast stress response are epithelial tumour progression and the promotion of stromal angiogenesis/lymphangiogenesis, ECM remodelling, cancer-associated inflammation and metabolic reprogramming. The concept is summarised schematically in Fig. 3.

Clinical implications

In 2004, CAFs were demonstrated for the first time in the stroma of OSCCs (54) and since then, a number of studies have emphasised their importance. When the data are taken together, CAFs occurring in high frequency in OSCCs are associated with invasion, disease progression, tumour recurrence and poor patient prognosis (55, 56). We have shown that fibroblast activation is also strongly associated with patient mortality regardless of disease stage and appears to be a better predictor of prognosis than TNM staging (57). Diagnostically, therefore, the identification of activated CAFs in tissue specimens of OSCC is an important guide to tumour behaviour and patient outcome.

Unfortunately, very little is known about the practical clinical implications of fibroblast senescence in OSCC. What we do know, however, is that fibroblast senescence is induced by the primary risk factors associated with OSCC including tobacco, alcohol and betel nut alkaloids and that fibroblast senescence precedes dysplasia in the pre-malignant condition oral submucous fibrosis (58). We are unaware of work examining fibroblast senescent markers in relation to OSCC tumour behaviour or outcome.

Conclusion

There is now compelling evidence that fibroblast stress responses promote epithelial cancer.

The fact that stromal fibroblasts are a genetically stable diploid cell population suggests that they may be ideal therapeutic targets. Our own work (Mellone, submitted for publication) and that of others (59) is encouraging in this context and may lead to the development new therapeutic modalities for the management of this debilitating disease.

References

1. Carvalho AL, Nishimoto IN, Califano JA, Kowalski LP. Trends in incidence and prognosis for head and neck cancer. *Int J Cancer* 2005; **114**: 806–16.
2. Edington KC, Loughran OP, Berry IJ, Parkinson EK. Cellular immortality: a late event in the progression of human squamous cell carcinoma of the head and neck associated with p53 alteration and a high frequency of allele loss. *Mol Carcinog* 1995; **13**: 254–65.
3. Loughran O, Malliri A, Owens D, et al. Association of CDKN2A/p16INK4A with human head and neck keratinocyte replicative senescence. Relationship of dysfunction to immortality and neoplasia. *Oncogene* 1996; **13**: 561–8.
4. MacGregor F, Muntoni A, Fleming J, et al. Molecular changes associated with oral dysplasia progression and acquisition of immortality: potential for its reversal by 5-azacytidine. *Cancer Res* 2002; **62**: 4757–66.

5. Hunter KD, Thurlow JK, Fleming J, et al. Divergent routes to oral cancer. *Cancer Res* 2006; **66**: 7405–13.
6. Cancer Genome Atlas Network. Comprehensive genomic characterization of head and neck squamous cell carcinomas. *Nature* 2015; **517**: 576–82.
7. Hanahan D, Weinberg WA. Hallmarks of cancer: the next generation. *Cell* 2011; **144**: 646–74.
8. Manjo G, Gabbiani G, Hirschel BJ, Ryan GB, Statkov PR. Contraction of granulation tissue *in vitro*: similarity to smooth muscle. *Science* 1971; **173**: 548–50.
9. Sugimoto H, Mundel TM, Kieran MW, Kalluri R. Identification of fibroblast heterogeneity in the tumor microenvironment. *Cancer Biol Ther* 2006; **5**: 1640–6.
10. Lim KP, Cirillo N, Hassona Y, et al. Fibroblast gene expression profile reflects the stage of tumour progression in oral squamous cell carcinoma. *J Pathol* 2011; **223**: 459–69.
11. Costea DE, Hills A, Osman AH, et al. Identification of two distinct carcinoma-associated fibroblast subtypes with different tumor-promoting capabilities in oral squamous cell carcinoma. *Cancer Res* 2013; **73**: 3888–901.
12. Kidd S, Spaeth E, Watson K, et al. Origins of the tumor microenvironment: quantitative assessment of the adipose-derived and bone marrow-derived stroma. *PLoS One* 2012; **7**: e30563.
13. Leef G, Thomas GM. Molecular communication between tumor-associated fibroblasts and head and neck squamous cell carcinoma. *Oral Oncol* 2013; **49**: 381–6.
14. Togo S, Polanska UM, Horimoto Y, Orimo A. Carcinoma-associated fibroblasts are a promising therapeutic target. *Cancers (Basel)* 2013; **5**: 149–69.
15. Olumi AF, Grossfeld GD, Hayward SW, Carroll PR, Tlsty TD, Cunha GR. Carcinoma-associated fibroblasts direct tumor progression of initiated human prostatic epithelium. *Cancer Res* 1999; **59**: 5002–11.
16. Sun Y, Campisi J, Higano C, et al. Treatment-induced damage to the tumor microenvironment promotes prostate cancer therapy resistance through WNT16B. *Nat Med* 2012; **18**: 1359–68.
17. Jiang L, Gonda TA, Gamble MV, et al. Global hypomethylation of genomic DNA in cancer-associated myofibroblasts. *Cancer Res* 2008; **68**: 9900–8.
18. Bartel DP. MicroRNAs: genomics, biogenesis, mechanism, and function. *Cell* 2004; **116**: 281–97.
19. Yao Q, Cao S, Li C, Mengesha A, Kong B, Wei M. MicroRNA 21 regulates TGF- β -induced myofibroblast differentiation by targeting PDCC4 in tumor-stroma interactions. *Int J Cancer* 2011; **128**: 1783–92.
20. Pang W, Su J, Wang Y, et al. Pancreatic cancer-secreted miR-155 implicates in the conversion from normal fibroblasts to cancer-associated fibroblasts. *Cancer Sci* 2015; **???:** ???–???. doi:10.1111/cas.12747 **4**
21. Tanaka K, Myata H, Sugimura K, et al. miR-27 is associated with chemoresistance in esophageal cancer through transformation of normal fibroblasts to cancer-associated fibroblasts. *Carcinogenesis* 2015; **???:** ???–???. pii bgv067. **5**
22. Bhaumik D, Scott GK, Schokrpur S, et al. MicroRNAs miR-146a/b negatively modulate the senescence-associated inflammatory mediators IL-6 and IL-8. *Aging (Albany NY)* 2009; **1**: 402–11.
23. Hedback N, Jensen DH, Specht L, et al. MiR-21 expression in the tumor stroma of oral squamous cell carcinoma: an independent biomarker of disease free survival. *PLoS One* 2014; **9**: e95193.
24. Pal A, Melling G, Hinsley EE, et al. Cigarette smoke condensate promotes pro-tumorigenic stromal-epithelial interactions by suppressing miR-145. *J Oral Pathol Med* 2013; **42**: 309–14.

25. Demehri S, Turkoz A, Kopan R. Epidermal Notch 1 loss promotes skin tumorigenesis by impacting the stromal microenvironment. *Cancer Cell* 2009; **16**: 55–66.
26. Hayflick L. The limited *in vitro* lifetime of human diploid cell strains. *Exp Cell Res* 1965; **37**: 614–36.
27. Di Micco R, Fumagalli M, Cicalese A, et al. Oncogene-induced senescence is a DNA damage response triggered by DNA hyper-replication. *Nature* 2006; **444**: 638–42.
28. Campisi J, d'Adda di Fagagna F. Cellular senescence: when bad things happen to good cells. *Nat Rev Mol Cell Biol* 2007; **8**: 729–40.
29. Crabbe L, Verdun RE, Haggblom CI, Karlseder J. Defective telomere lagging strand synthesis in cells lacking WRN helicase activity. *Science* 2004; **306**: 1951–3.
30. Morales CP, Holt SE, Ouellette M, et al. Absence of cancer-associated changes in human fibroblasts immortalized with telomerase. *Nat Genet* 1999; **21**: 115–8.
31. Killela PJ, Reitman ZJ, Jiao Y, et al. TERT promoter mutations occur frequently in gliomas and a subset of tumors derived from cells with low rates of self-renewal. *Proc Natl Acad Sci USA* 2013; **110**: 6021–6.
32. Kinde I, Munari E, Faraj SF, et al. TERT promoter mutations occur early in urothelial neoplasia and are biomarkers of early disease and disease recurrence in urine. *Cancer Res* 2013; **73**: 7162–7.
33. Shay JW, Reddel RR, Wright WE. Cancer and telomeres - an ALTerNative to telomerase. *Science* 2012; **336**: 1388–90.
34. Parkinson EK. Senescence as a modulator of oral squamous cell carcinoma development. *Oral Oncol* 2010; **46**: 840–53.
35. Bavik C, Coleman I, Dean JP, Knudsen B, Plymate S, Nelson PS. The gene expression profile of prostate fibroblast senescence modulates neoplastic epithelial cell proliferation through paracrine mechanisms. *Cancer Res* 2006; **66**: 794–802.
36. Kuilman T, Peeper DS. Senescence-messaging secretome: SMS-ing cellular stress. *Nat Rev Cancer* 2009; **9**: 81–94.
37. Coppe JP, Patil CK, Rodier F, et al. Senescent-associated secretory phenotypes reveal cell nonautonomous functions of oncogenic RAS and the p53 tumor suppressor. *PLoS Biol* 2008; **6**: 2853–68.
38. Pazolli E, Luo X, Brehm S, et al. Senescent stromal-derived osteopontin promotes preneoplastic cell growth. *Cancer Res* 2009; **69**: 1230–9.
39. Zheng X, Carstens JL, Kim J, et al. Epithelial-to-mesenchymal transition is dispensable for metastasis but induces chemoresistance in pancreatic cancer. *Nature* 2015; **527**: 525–30.
40. Hassona Y, Cirillo N, Lim KP, et al. Progression of genotype-specific oral cancer leads to senescence of cancer-associated fibroblasts and is mediated by oxidative stress and TGF- β . *Carcinogenesis* 2013; **34**: 1286–95.
41. Hassona Y, Cirillo N, Heesom K, Parkinson EK, Prime SS. Senescent cancer-associated fibroblasts secrete active MMP-2 that promotes keratinocyte dis-cohesion and invasion. *Br J Cancer* 2014; **111**: 1230–7.
42. Calon A, Tauriello DV, Batlle E. TGF-beta in CAF-mediated tumor growth and metastases. *Semin Cancer Biol* 2014; **25**: 15–22.
43. Procopio M-G, Laszlo C, Al Labban D, et al. Combined CSL and p53 downregulation promotes cancer-associated fibroblast activation. *Nat Cell Biol* 2015; **17**: 1193–204.
44. Krizhanovsky V, Yon M, Dickins RA, et al. Senescence of activated stellate cells limits liver fibrosis. *Cell* 2008; **134**: 657–67.
45. Alspach E, Flanagan KC, Luo X, et al. p38MAPK plays a crucial role in stromal-mediated tumorigenesis. *Cancer Discov* 2014; **4**: 1158/2159-8290. CD-13-0743
46. James EL, Michalek RD, Pitiyage GN, et al. Senescent human fibroblasts show increased glycolysis and redox homeostasis with extracellular metabolomes that overlap with those of irreparable DNA damage, aging, and disease. *J Proteome Res* 2015; **14**: 1854–71.
47. James EL, Parkinson EK. Serum metabolomics in animal models and human disease. *Curr Opin Clin Nutr Metab Care* 2015; **18**: 478–83.
48. Gupta A, Gupta S, Mahdi AA. ¹H NMR-derived serum metabolomics of leukoplakia and squamous cell carcinoma. *Clin Chim Acta* 2015; **441**: 47–55.
49. Sugimoto M, Wong DT, Hirayama A, Soga T, Tomita M. Capillary electrophoresis mass spectrometry-based saliva metabolomics identified oral, breast and pancreatic cancer-specific profiles. *Metabolomics* 2010; **6**: 78–95.
50. Martinez-Outschoorn UE, Lin Z, Whitaker-Menezes D, Howell A, Sotgia F, Lisanti MP. Ketone body utilization drives tumor growth and metastasis. *Cell Cycle* 2012; **11**: 3964–71.
51. Kim YM, Shin HT, Seo YH, et al. Sterol regulatory element-binding protein (SREBP)-1-mediated lipogenesis is involved in cell senescence. *J Biol Chem* 2010; **285**: 29069–77.
52. Cruickshanks HA, McBryan T, Nelson DM, et al. Senescent cells harbour features of the cancer epigenome. *Nat Cell Biol* 2013; **15**: 1495–506.
53. Coppe JP, Rodier F, Patil CK, Freund A, Desprez PY, Campisi J. Tumor suppressor and aging biomarker p16 (INK4A) induces cellular senescence without the associated inflammatory secretory phenotype. *J Biol Chem* 2011; **286**: 36396–403.
54. Barth PJ, Schenk zu Schweinsberg T, Ramaswamy A, Moll R. CD34+ fibrocytes, alpha-smooth muscle antigen-positive myofibroblasts, and CD117 expression in the stroma of invasive squamous cell carcinomas of the oral cavity, pharynx and larynx. *Virchows Arch* 2004; **444**: 231–4.
55. Kawashiri S, Tanaka A, Noguchi N, et al. Significance of stromal desmoplasia and myofibroblast appearance at the invasive front in squamous cell carcinoma of the oral cavity. *Head Neck* 2009; **10**: 1346–53.
56. Vered M, Dayan D, Yahalom R, et al. Cancer-associated fibroblasts and epithelial-mesenchymal transition in metastatic oral tongue squamous cell carcinoma. *Int J Cancer* 2010; **127**: 1356–62.
57. Marsh D, Suchak K, Moutasim KA, et al. Stromal features are predictive of disease mortality in oral cancer patients. *J Pathol* 2011; **223**: 470–81.
58. Pitiyage G, Slijpcevic P, Gabrani A, et al. Senescent mesenchymal cells accumulate in human fibrosis by a telomere-independent mechanism and ameliorate fibrosis through matrix metalloproteinases. *J Pathol* 2011; **223**: 604–17.
59. Brennen WN, Rosen DM, Wang H, et al. Targeting cancer-associated fibroblasts within the tumor stroma with a fibroblast activation protein-activated prodrug. *J Natl Cancer Inst* 2012; **104**: 1320–34.

Acknowledgements

ICP is supported by a University of Malaya-MOHE High Impact Research Grant (UM.C/625/1/HIR/MOHE/DENT/22).

Conflict of interest statement

As far as we are aware, there is no conflict of interest in this manuscript.

Author Query Form

Journal: JOP
Article: 12456

Dear Author,

During the copy-editing of your paper, the following queries arose. Please respond to these by marking up your proofs with the necessary changes/additions. Please write your answers on the query sheet if there is insufficient space on the page proofs. Please write clearly and follow the conventions shown on the attached corrections sheet. If returning the proof by fax do not write too close to the paper's edge. Please remember that illegible mark-ups may delay publication.

Many thanks for your assistance.

Query reference	Query	Remarks
1	AUTHOR: Please confirm that given names (red) and surnames/family names (green) have been identified correctly.	
2	AUTHOR: Please check that authors and their affiliations are correct.	
3	AUTHOR: Please check and provide telephone and fax numbers for corresponding author.	
4	AUTHOR: Please provide the volume number, page range for reference [20].	
5	AUTHOR: Please provide the volume number, page range for reference [21].	
6	AUTHOR: Please provide the volume number, page range for reference [45].	
7	AUTHOR: Figure 1 has been saved at a low resolution of 157 dpi. Please resupply at 600 dpi. Check required artwork specifications at http://authorservices.wiley.com/bauthor/illustration.asp	
8	AUTHOR: Figure 3 has been saved at a low resolution of 159 dpi. Please resupply at 600 dpi. Check required artwork specifications at http://authorservices.wiley.com/bauthor/illustration.asp	
9	Please note that this proof exceeds the journal's free pages allocation (6pp) and will be subject to an excess page charge of \$163 USD per page.	