

Spermidine Promotes Human Hair Growth and Is a Novel Modulator of Human Epithelial Stem Cell Functions

Yuval Ramot^{1,2,3}, Stephan Tiede^{2,3}, Tamás Bíró³, Mohd Hilmi Abu Bakar^{2,4}, Koji Sugawara², Michael P. Philpott⁵, Wesley Harrison⁵, Marko Pietilä⁶, Ralf Paus^{2,7*}

1 Department of Dermatology, Hadassah - Hebrew University Medical Center, Jerusalem, Israel, **2** Department of Dermatology, University of Lübeck, Lübeck, Germany, **3** Department of Physiology, Research Centre for Molecular Medicine, University of Debrecen, Debrecen, Hungary, **4** Universiti Sains Malaysia, Kelantan, Malaysia, **5** Centre for Cutaneous Research, Blizard Institute of Cell and Molecular Science, Barts and the London School of Medicine and Dentistry, Queen Mary University of London, London, United Kingdom, **6** Department of Biotechnology and Molecular Medicine, A. I. Virtanen Institute for Molecular Sciences, Biocenter Kuopio, University of Eastern Finland, Kuopio, Finland, **7** Epithelial Sciences, School of Translational Medicine, University of Manchester, Manchester, United Kingdom

Abstract

Background: Rapidly regenerating tissues need sufficient polyamine synthesis. Since the hair follicle (HF) is a highly proliferative mini-organ, polyamines may also be important for normal hair growth. However, the role of polyamines in human HF biology and their effect on HF epithelial stem cells *in situ* remains largely unknown.

Methods and Findings: We have studied the effects of the prototypic polyamine, spermidine (0.1–1 μ M), on human scalp HFs and human HF epithelial stem cells in serum-free organ culture. Under these conditions, spermidine promoted hair shaft elongation and prolonged hair growth (anagen). Spermidine also upregulated expression of the epithelial stem cell-associated keratins K15 and K19, and dose-dependently modulated K15 promoter activity *in situ* and the colony forming efficiency, proliferation and K15 expression of isolated human K15-GFP+ cells *in vitro*. Inhibiting the rate-limiting enzyme of polyamine synthesis, ornithine decarboxylase (ODC), downregulated intrafollicular K15 expression. In primary human epidermal keratinocytes, spermidine slightly promoted entry into the S/G2-M phases of the cell cycle. By microarray analysis of human HF mRNA extracts, spermidine upregulated several key target genes implicated e.g. in the control of cell adherence and migration (*POP3*), or endoplasmic reticulum and mitochondrial functions (*SYVN1*, *NACA* and *SLC25A3*). Excess spermidine may restrict further intrafollicular polyamine synthesis by inhibiting ODC gene and protein expression in the HF's companion layer *in situ*.

Conclusions: These physiologically and clinically relevant data provide the first direct evidence that spermidine is a potent stimulator of human hair growth and a previously unknown modulator of human epithelial stem cell biology.

Citation: Ramot Y, Tiede S, Bíró T, Abu Bakar MH, Sugawara K, et al. (2011) Spermidine Promotes Human Hair Growth and Is a Novel Modulator of Human Epithelial Stem Cell Functions. PLoS ONE 6(7): e22564. doi:10.1371/journal.pone.0022564

Editor: Jürgen Schaubert, Ludwig-Maximilian-University, Germany

Received: April 15, 2011; **Accepted:** June 24, 2011; **Published:** July 27, 2011

Copyright: © 2011 Ramot et al. This is an open-access article distributed under the terms of the Creative Commons Attribution License, which permits unrestricted use, distribution, and reproduction in any medium, provided the original author and source are credited.

Funding: This study was supported in part by a research grant from Giuliani S.p.A, Milano, Italy, to Ralf Paus. Additional funding comes from Deutsche Forschungsgemeinschaft (DFG Pa 345/12-1) to RP. The funders had no role in study design, data collection and analysis, decision to publish, or preparation of the manuscript.

Competing Interests: RP and MP have received academic research grants from Giuliani, and have served in a consultancy function for this company. The authors are neither employees of Giuliani Srl, Milano, nor do they have any direct financial interests in the products of this company. This does not alter the authors' adherence to all the PLoS ONE policies on sharing data and materials.

* E-mail: ralf.paus@uk-sh.de

These authors contributed equally to this work.

Introduction

Polyamines (spermidine, putrescine and spermine) are multifunctional polycationic aliphatic amines, which serve crucial roles in cell survival. Besides serving as nutrients and metabolic regulators [1,2], polyamines have been implicated as mediators of key cell functions, such as proliferation, migration and differentiation [3–7]. Polyamines also stabilize DNA/RNA and modulate DNA replication/transcription [1,2,8–10], and stabilize membrane and cytoskeletal proteins [11,12]. Recently a key polyamine, spermidine, has even been hailed as a new longevity agent due to its impact on chromatin-mediated regulation of gene expression [13]. While polyamines are indispensable for cell proliferation, and are needed for the growth of rapidly

regenerating tissues and tumors [14,15], the full spectrum of functions of spermidine in normal *human* tissue physiology remains poorly understood [16].

The hair follicle (HF) is one of the most highly proliferative organs in mammalian biology [17,18]. Therefore, polyamines have long been suspected to be important for hair growth [19]. For example, inhibiting polyamine synthesis significantly modulates murine hair growth [20], and polyamines have an essential role in determining sheep HF growth and diameter [21]. In addition, a recent study has shown that a topical administration of α -methylspermidine, a stable analogue of spermidine, induced hair growth in telogen phase mice [22]. Surprisingly, however, studies utilizing several transgenic mice lines with altered polyamine metabolism [6,19,20,23–28] showed that the most prominent

phenotype of these mice was hair loss due to disturbed proliferation of follicular keratinocytes.

In human skin, topical application of eflornithine (difluoromethylornithine, DFMO), an inhibitor of ornithine decarboxylase (ODC), the rate limiting enzyme in the polyamine biosynthesis pathway [29], can reduce undesired, excessive hair growth [30,31]. We have previously shown that addition of DFMO to organ-cultured human scalp HF's shortens the growth phase of the hair cycle (anagen) and inhibits hair shaft production, accompanied by a decrease in matrix keratinocyte proliferation [32]. However, whether and how spermidine itself affects *human* hair growth directly is unknown.

Therefore, we have exploited the HF as an excellent model system for exploring physiological polyamine functions in human skin [29]. Specifically, we have studied in normal, microdissected human scalp HF's under serum-free organ culture conditions [33–35] whether spermidine impacts on basic hair biology parameters. We opted for testing the spermidine doses that have been previously shown to modulate wool follicles growth in organ culture [21], and that correspond to the physiological spermidine levels in human plasma [36]. Using keratin 15 (K15) expression and *K15* promoter-driven green fluorescent protein (GFP) expression as a system for assessing human epithelial HF stem cell functions *in situ* and *in vitro* [35,37,38], we also explored whether spermidine alters human HF epithelial stem cell clonogenicity, whose modulation by polyamines is as yet unknown [17,18,38,39].

Results

Spermidine stimulates hair-shaft elongation and prolongs anagen

Administration of spermidine for 6 days slightly, but significantly, increased hair shaft growth of microdissected, organ-cultured normal human scalp HF's (Figure 1A). This effect was maximal and significant at 0.5 μ M, and led to more than a 20% increase in hair shaft production after 6 days in culture (Figure 1B).

However, whether spermidine can also prolong the duration of anagen is clinically much more important than the effect on hair elongation since this directly impacts on the amount of hair that is

shed (e.g., a reduced percentage of HF's in anagen, clinically, will inevitably result in a higher percentage of catagen and subsequently telogen HF's, thus leading to telogen effluvium – and vice versa) [17,18,40]. To assess this, quantitative hair cycle histomorphometry was performed [41,42]. Indeed, after 6 days of organ culture, all doses of spermidine investigated led to an increase in the percentage of HF's in anagen, and decreased that of catagen HF's (Figure 1C). In the presence of spermidine, only 47–52% of the HF's spontaneously entered catagen, while 67% of the control HF's had already done so.

Spermidine downregulates ODC expression in the HF

ODC, the rate-limiting enzyme of polyamine synthesis, reportedly is expressed in highly proliferative hair matrix keratinocytes [29,43]. We have also demonstrated that ODC is present in the matrix keratinocytes of human anagen VI HF's (Fig. 2A). However, surprisingly, high immunoreactivity was also evident in the companion layer of the HF (Fig. 2A).

Since polyamines negatively regulate ODC activity, both on transcriptional and post-transcriptional level [29], we checked whether any such effect is also apparent in spermidine-treated HF's. We found that spermidine treatment for 6 days downregulated ODC protein expression *in situ* (Figure 2B), and showed a tendency towards decreased *ODC* mRNA transcription after 24 h treatment (Figure 2C), though the latter was not significant. However, in isolated, cultured human HF-derived outer root sheath (ORS) keratinocytes, 0.5 μ M spermidine treatment for 48 h significantly downregulated *ODC* mRNA expression (Figure 2D). Together, these data suggest that excess spermidine induces intracellular counter-regulatory events in human HF epithelium *in situ* through which further intrafollicular polyamine synthesis is restricted by inhibiting *ODC* gene and protein expression.

Spermidine stimulates human hair matrix and epidermal keratinocyte proliferation

The fact that spermidine prolonged anagen suggested effects on highly proliferative hair matrix keratinocytes [17,18]. *In situ*, spermidine slightly, but not significantly stimulated hair matrix

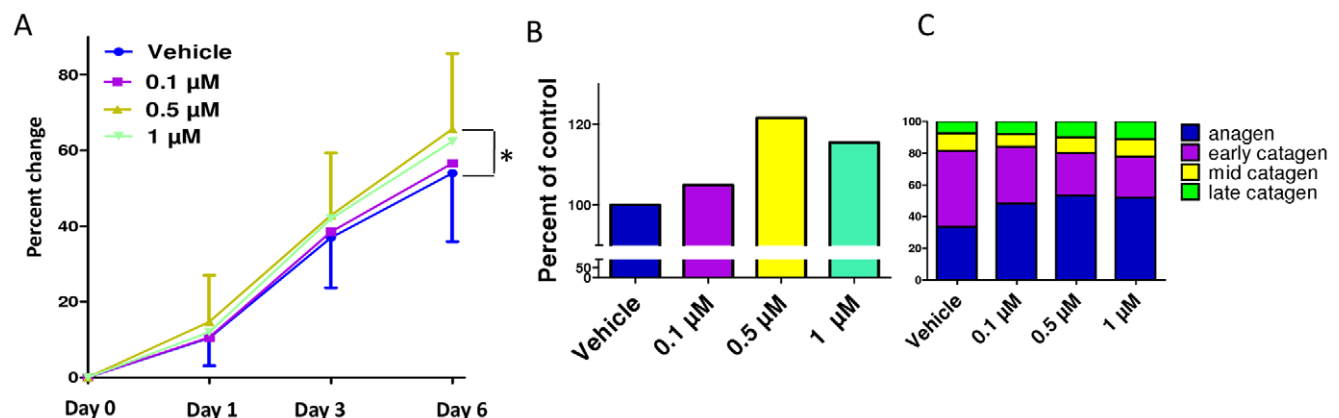


Figure 1. Spermidine treatment increases hair shaft elongation and prolongs anagen. **A.** Spermidine treatment for 6d increased hair shaft elongation of microdissected organ cultured HF's, maximal and significant in the 0.5 μ M dose. In this clinically highly relevant *in vitro*-assay, amputated HF's in the growth phase of the hair cycle (anagen) continue for several days to produce a pigmented hair shaft at almost the normal speed of normal anagen HF's *in vivo*, and display cyclic growth activity *in vitro* by spontaneously entering into the regression phase of the hair cycle (catagen). **B.** Total increase in hair shaft elongation relative to control after 6d in culture (cumulative results of two different experiments). **C.** Spermidine treatment prolonged anagen in all three doses after 6d in culture. * $P < 0.05$. Columns represent means \pm SEM; $n = 30$ –36 HF's/group; cumulative results of two different experiments. doi:10.1371/journal.pone.0022564.g001

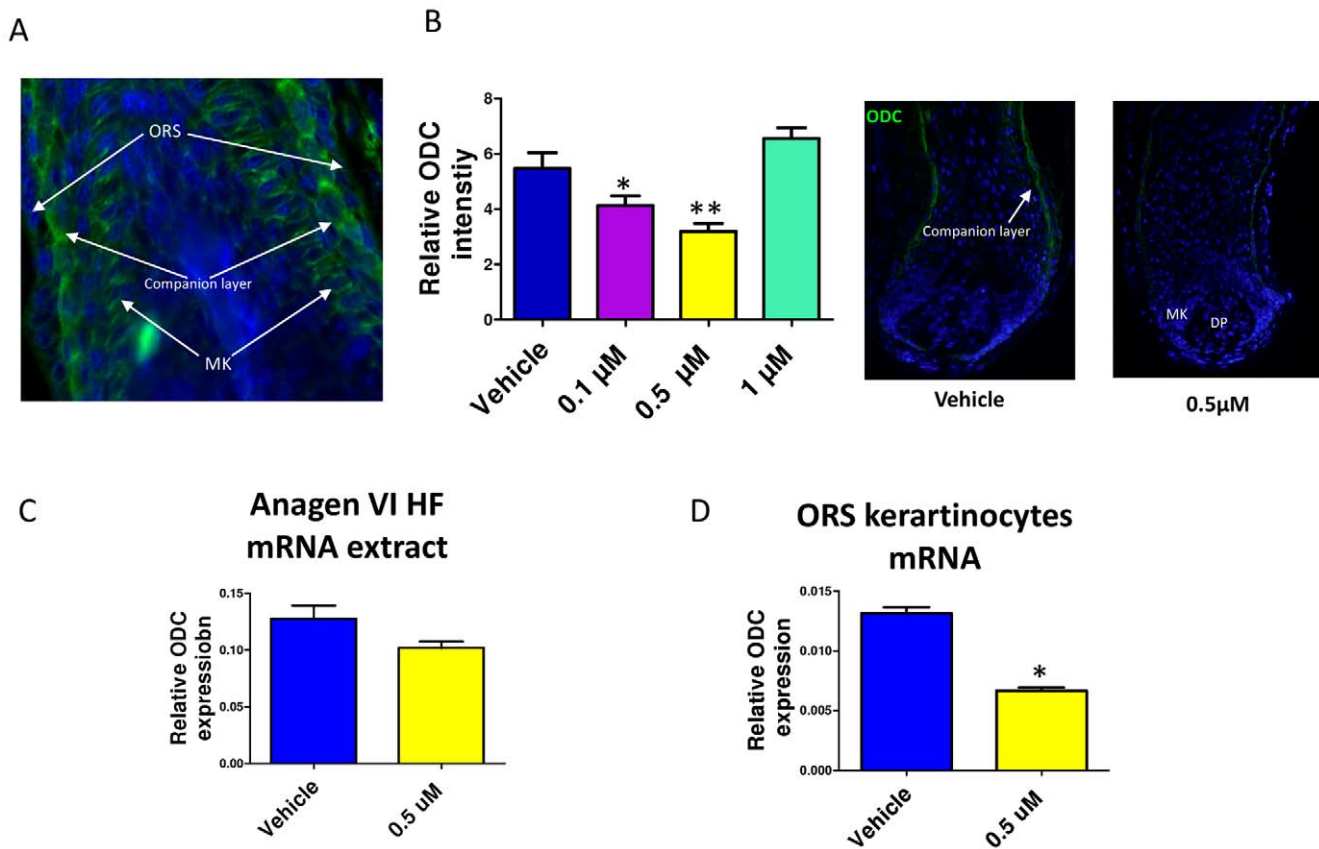


Figure 2. Spermidine treatment down-regulates ODC expression in the HF. **A.** Immunoreactivity of ODC in the proximal HF demonstrates moderate ODC expression in the matrix keratinocytes, and strong expression in the proximal companion layer. **B.** Spermidine treatment for 6d decreased ODC immunoreactivity in the lower doses (0.1 and 0.5 μM). Columns represent means \pm SEM; $n = 9\text{--}13$ HF/group. **C.** By Q-PCR, spermidine treatment for 24 h slightly decreased the ODC transcript steady-state levels in human anagen HF mRNA extracts, compared to *PP1A*, although this did not reach significances. **D.** However, spermidine significantly down regulated ODC transcription in cultured human ORS keratinocytes after 48 h. * $P < 0.05$. Columns represent means \pm SEM. Results represent triplicate determinations of samples. Total RNA was pooled from 20 HF. DP, dermal papilla; MK, matrix keratinocytes; ORS, outer root sheath. doi:10.1371/journal.pone.0022564.g002

keratinocyte proliferation, as assessed by quantitative Ki67-immunohistomorphometry (Figure 3A), and did not significantly alter hair matrix keratinocyte apoptosis (Figure 3A). However, fluorimetric proliferation assays revealed that spermidine dose-dependently stimulated the proliferation of cultured primary human epidermal keratinocytes (Figure 2B). FACS analysis revealed that spermidine promoted the accumulation of cells in the S/G2-M phases of the cell cycle (data not shown). Thus, the promotion of S/G2-M entry by human HF keratinocytes may be one potential mechanism by which spermidine may exert its anagen-prolonging effects.

Spermidine differentially modulates the gene expression profile of human HF

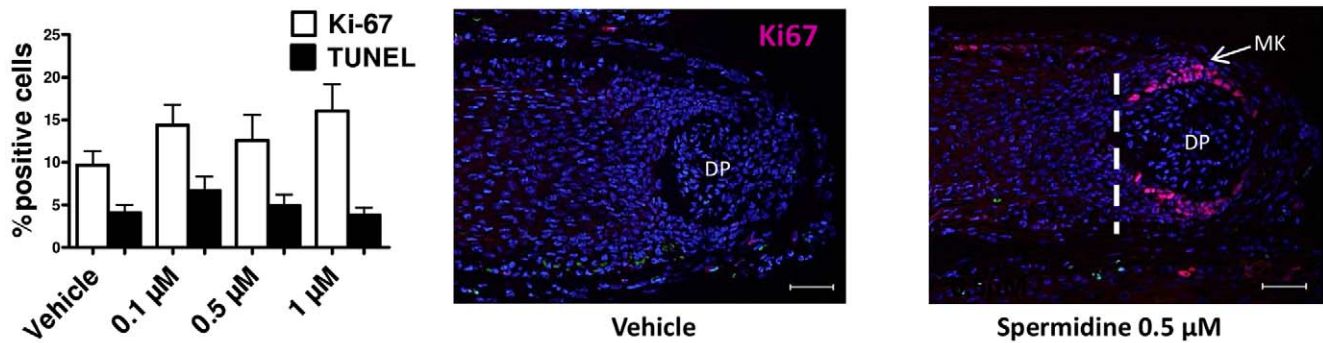
In order to identify potential (direct or indirect) target genes of spermidine action in human HF, a genome-wide microarray analysis was performed on two independent sets of organ-cultured human scalp HF, derived from two healthy female volunteers (aged 47 and 67 yrs), which had been treated with 0.5 μM spermidine or vehicle for 24 h and 48 h, respectively. In order to check which genes are being constitutively activated following spermidine administration, we made a comparison between these two time-points. Adopting rigid selection criteria, i.e. selecting only those genes whose intrafollicular transcription was modified >2 -fold

($p < 0.05$) into the same direction in both individuals, only five genes were identified as significantly and equidirectionally up-regulated by the tested spermidine dose (Table 1). Of these spermidine-regulated genes, *STN1* and *NACA* are known to be important for normal cell homeostasis and function, including endoplasmic reticulum-associated protein degradation [44] and folding and targeting of nascent proteins [45]. *SLC25A3* encodes a mitochondrial phosphate carrier, essential for the aerobic synthesis of adenosine triphosphate [46], and *POP3* is important for cell adherence and migration [47] (see Discussion for details).

Spermidine up-regulates expression of the epithelial stem cell-associated keratins K15 and K19, and modulates K15 promoter activity *in situ*

Anagen maintenance requires constant production of HF keratinocytes from resident epithelial stem cells (eSCs) and their progeny, which are thought to migrate towards the hair matrix [18,48]. Since polyamines have been shown to be required for the migration [3,4] and differentiation of various progenitor cell populations [5–7,49] as well as for cell cycle progression [50,51], we therefore addressed whether spermidine also affects human HF eSCs. These cells are located primarily in the bulge and are characterized by expression of K15; however, K15+ progenitors are also found further down the ORS [17,18,38,39].

A



B

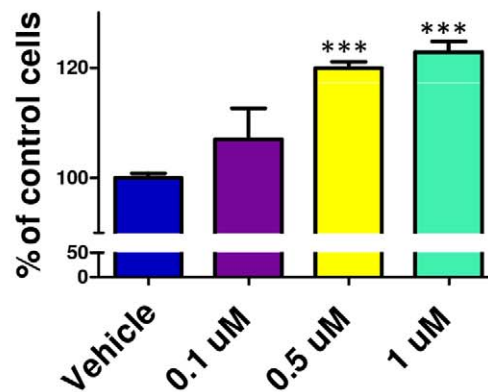


Figure 3. Spermidine stimulated proliferation of primary human keratinocytes and tended to stimulate hair matrix keratinocytes.

A. By quantitative Ki67/TUNEL immunohistomorphometry, spermidine tended to slightly stimulate hair matrix keratinocyte proliferation *in situ*; however, this did not reach statistical significance. No effect was seen on hair matrix keratinocyte apoptosis *in situ*. Columns represent means±SEM; n=30–36 HF/group; cumulative results of two different experiments. **B.** Spermidine significantly stimulated proliferation of primary human keratinocytes after 48 h, as assessed by fluorimetric proliferation assay. The values shown are means±SEM of triplicate experiments. Scale bars, 50 μm. Columns represent means±SEM; ***P<0.001. DP, dermal papilla; MK, matrix keratinocytes.

doi:10.1371/journal.pone.0022564.g003

Table 1. Selected genes up-regulated in HF by spermidine (0.5 μM).

Gene name	Sequence description	Sample 1		Sample 2	
		Fold change	P-value	Fold change	P-value
SYVN1	Synovial apoptosis inhibitor 1, synoviolin: Ubiquitin ligase, plays a role in endoplasmic reticulum-associated protein degradation [44].	2.81	0.012	3.74	0.002
KRT77	Keratin 77: Intermediate filament expressed in the luminal cells of eccrine sweat glands [69]	2.58	0.006	3.24	0.005
NACA	Nascent-polypeptide-associated complex alpha polypeptide: Part of the protein translation chaperone complex, which has an important role in cotranslational processes, in addition to transcriptional regulation-related processes and cell differentiation [45]	2.1	0.033	2.73	0.007
POPDC3	Popeye domain containing 3: Takes part in cell adhesion and migration, and essential for normal heart function [47,70]	2.29	0.018	2.09	0.029
SLC25A3	Solute carrier family 25 (mitochondrial carrier; phosphate carrier), member 3: Mitochondrial phosphate carrier, essential for the aerobic synthesis of adenosine triphosphate [67]	3.74	0.004	2.05	0.026

doi:10.1371/journal.pone.0022564.t001

Even though our microarray analysis had not identified any HF-associated keratins as spermidine-regulated genes (possibly for methodological or sub-threshold reasons), quantitative immunohistomorphometry of K15 expression *in situ* clearly showed that spermidine significantly increased K15 immunoreactivity in the basal layer of the proximal ORS after 6 days (Figure 4A).

To confirm this effect in isolated human HF keratinocytes, which are not influenced by the HF mesenchyme, HF melanocytes, and intrafollicular hematopoietic cells, we measured the steady-state levels of *K15* mRNA in cultured human ORS keratinocytes that had been treated for 48 h with 0.5 μ M spermidine. Indeed, *K15* mRNA was upregulated after 48 h of treatment (Figure 4B). Conversely, ODC inhibition by DMFO significantly downregulated *K15* expression after 6 days (Figure 4C). This suggests that K15 protein expression *in situ* is profoundly regulated by spermidine.

In the lower two doses tested, spermidine also significantly increased keratin 19 (K19) protein expression after 6 days, an independent human HF epithelial progenitor cell marker [35,52] (Figure 4D). Additionally, 0.5 μ M spermidine administration led to increased *K19* mRNA expression in organ-cultured HFs after 24 h (Figure 4E). Treatment of cultured ORS keratinocytes with 0.5 μ M spermidine tended to upregulate *K19* mRNA after 48 h, but this was not statistically significant (Figure 4F).

To further explore the effect of spermidine on human HF eSCs in the bulge [39,48], we employed a novel human *K15* promoter-driven GFP reporter assay, which demarcates K15+ human HF epithelial progenitor cells *in situ* [37,38]. This revealed that spermidine also significantly and dose-dependently modulated human *K15* promoter activity in the bulge region *in situ*: As measured by the intensity of GFP fluorescence, at 0.5 μ M spermidine up-regulated the transfected *K15* promoter activity *in situ*, while it down-regulated it at 0.1 μ M or 1 μ M (Figure 5A).

Spermidine dose-dependently modulates colony forming efficiency and K15 expression of isolated K15-GFP+ cells *in vitro*

To further investigate how spermidine impacts on human HF epithelial progenitor cells in the absence of HF mesenchyme, HF melanocytes and intrafollicular hematopoietic cells, we isolated and cultured human HF K15-GFP+ progenitor cells [37,38]. These experiments showed that only the 0.5 μ M spermidine dose significantly up-regulated the colony forming efficiency of K15-GFP+ progenitor cells (Figure 5B). This spermidine dose also increased their *K15* mRNA expression on days 3 and 6 (Figure 5C), and slightly enhanced their K15 protein expression on days 1 and 3 (Figure 5D). Furthermore, 0.5 μ M spermidine also stimulated proliferation on days 3 and 6 of these isolated human HF progenitor cells *in vitro* (Figure 5D). In contrast, 1 μ M spermidine significantly inhibited *K15* mRNA expression and the proliferation activity of K15-GFP+ cells *in vitro* (Figures 5C, D).

These *in vitro* results are comparable with the *in situ* observations, which also showed maximal spermidine growth-modulatory effects on the intact HF mini-organ at the same dose. Taken together, this suggests that the spermidine-induced growth-promotion of human HFs at 0.5 μ M (Figures 1A, B) may be mediated, at least in part, by an effect on epithelial HF progenitor cells, which are also stimulated by the same dose.

Discussion

While it has long been postulated that polyamines may stimulate hair growth [22,29,53], the current study is the first to provide direct evidence that this is actually the case in human HFs.

Specifically, we demonstrate that spermidine stimulates hair shaft elongation, accompanied by prolongation of anagen, and thus directly promotes human HF growth. This is in line with recent *in vivo* evidence that topically applied alpha-methylspermidine induces anagen in mouse telogen HFs [22].

The anagen prolongation/catagen inhibition by spermidine demonstrated here is clinically important: If our human HF organ culture data are transferrable to the *in vivo* situation, spermidine administration may help to counteract multiple forms of hair loss associated with excessive hair shedding. Namely, topical or nutraceutical spermidine application may reduce telogen effluvium in patients that suffer from hair loss due to premature anagen termination (e.g. by androgens, perifollicular inflammation, iron or estrogen deficiency, or effluvium-inducing drugs) [17,54].

ODC is expressed in the anagen hair matrix [29,55], and reducing intrafollicular spermidine synthesis by the inhibition of ODC activity reduces human hair shaft growth and shortens anagen duration [32]. Together with the anagen-prolonging and hair growth-promoting effects of spermidine demonstrated here, this suggests that intrafollicular synthesis of spermidine is important for keeping a HF in its growth stage. However, over-expression of ODC in mice results in the formation of dermal cysts, leading to the opposite effect (= hair loss) [20,25]. This is postulated to result from the excessive accumulation of putrescine, which causes disturbed keratinocyte differentiation and increased proliferation. In fact, we show here that spermidine application downregulates intrafollicular ODC expression on the gene and protein levels (Fig. 2B-D), and may thus protect the human scalp HF against excessive synthesis of putrescine so as to avoid deleterious polyamine effects on human hair growth.

To our surprise, although also evident in the proliferating keratinocytes of the hair bulb, the strongest expression of ODC was evident in the companion layer of the HF (Fig. 2A). This expression pattern coincides with the intriguing pattern of expression of K6/K16, the keratins known to be expressed in highly proliferating cells [56]. Thus, our findings add to the mystery which still surrounds this layer in the HF, and which awaits further investigation.

Despite the known general proliferation-stimulatory properties of polyamines [57,58], which were confirmed here in cultured human epidermal keratinocytes (Fig. 3B), and the demonstrated inhibitory effects of DFMO on human hair matrix keratinocytes [32], spermidine exerted only minor effects on hair matrix proliferation *in situ*. Therefore, much of the stimulatory effect of spermidine on hair shaft production appears to arise from a prolongation of anagen (Fig. 1C). This supports the concept that polyamines are potent regulators of HF *cycling*, not only in mice [19,22,26], but also in man. It also provides the first evidence that one defined polyamine, spermidine, alters HF cycling by *direct* effects on the HF which are independent of *extrafollicular* changes induced in the concentration of various polyamines and/or in the activity of their multiple different target genes.

The recent provocative report that spermidine may promote longevity [13,59] may be relevant in the current context, if one considers that, with the notable exception of its pigmentary unit, the HF is one of the most strikingly aging-resistant organs of the human body [60]. Furthermore, the duration and prolongation of anagen is a very faithful indicator of HF vitality [32,61]. Therefore, one wonders whether spermidine impacts positively on a HF's individual lifespan. Since the latter vitally depends on its epithelial stem cell compartment [48,62], this raises the question whether the normal function of HF epithelial stem cells depends on proper intrafollicular spermidine synthesis and/or availability.

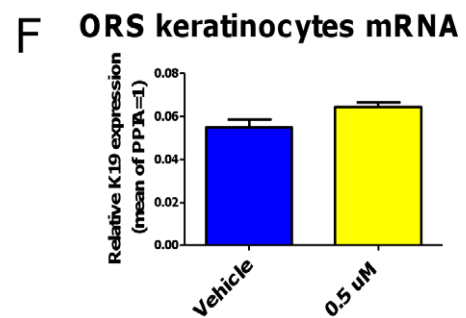
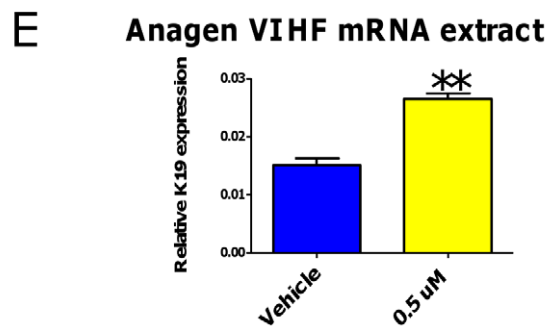
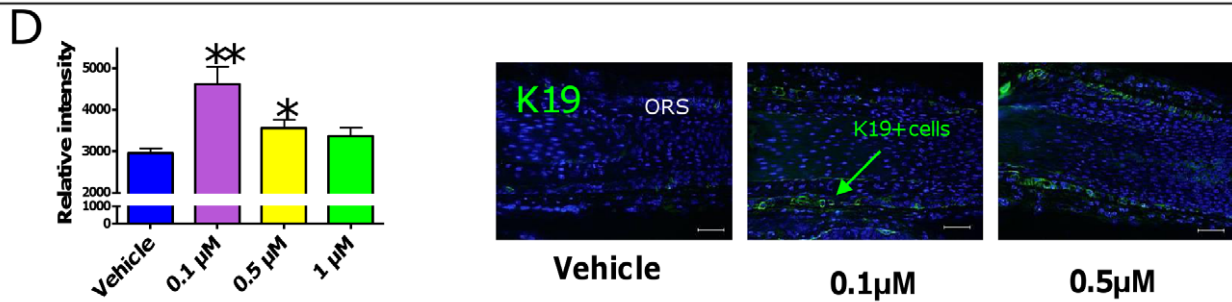
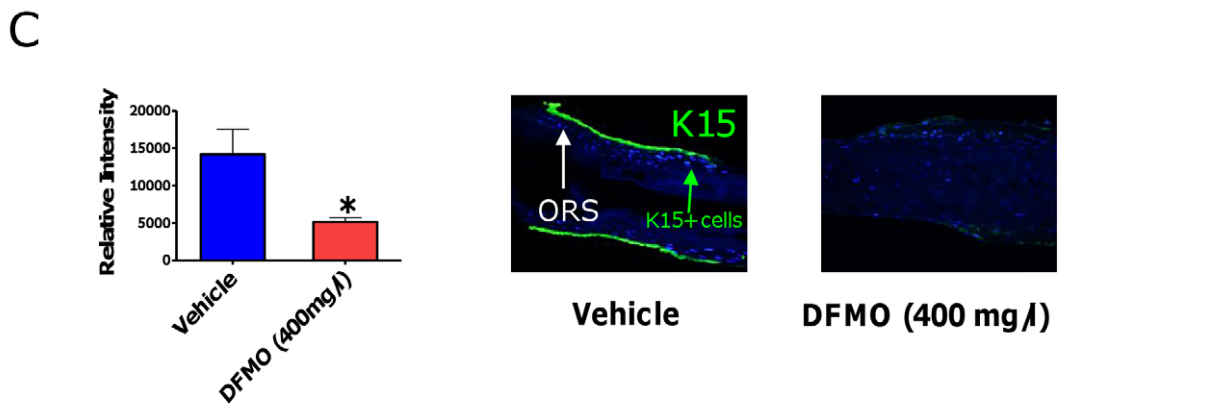
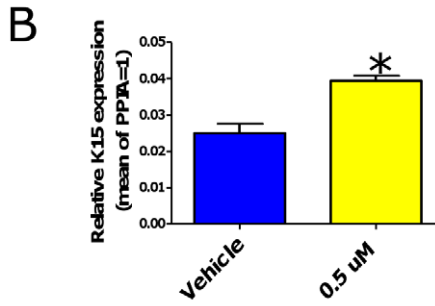
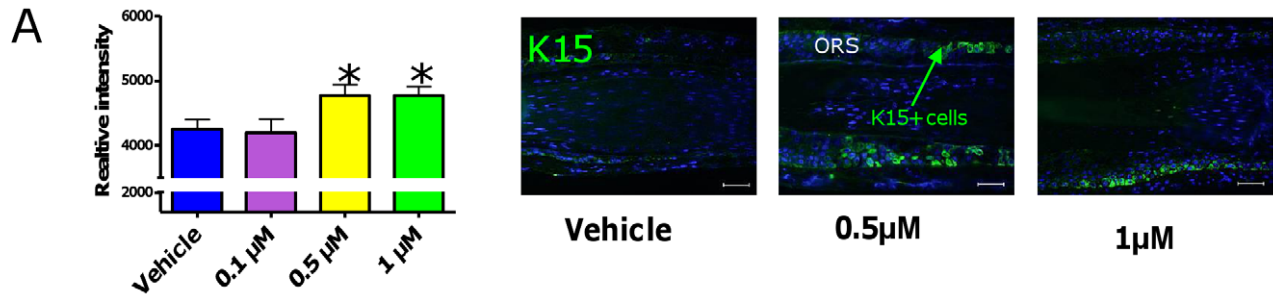


Figure 4. Spermidine up-regulates expression of the epithelial stem cell-associated keratins K15 and K19. **A.** Spermidine treatment for 6d increased K15-like immunoreactivity in the 0.5 μ M and 1 μ M doses, as assessed by quantitative immunoreactivity. $n=10-15$ HF/group; cumulative results of two different experiments. **B.** Spermidine significantly upregulated *K15* mRNA expression in cultured ORS keratinocytes after 48 h of treatment. Results represent triplicate determinations of samples. Total RNA was pooled from 20 HF. **C.** DFMO (400 mg/l) significantly decreased K15-like immunoreactivity after 6d. $n=6-8$ HF/group. **D.** Spermidine treatment for 6d increased K19-like immunoreactivity in the 0.1 μ M and 0.5 μ M doses, as assessed by quantitative immunoreactivity. $n=30-36$ HF/group; cumulative results of two different experiments. **E.** By Q-PCR, spermidine treatment for 48 h significantly increased the *K19* transcript steady-state levels in human anagen HF mRNA extracts. **F.** Treatment of ORS keratinocytes for 48 h showed a tendency of *K19* mRNA upregulation, but these results were not statistically significant. Results represent triplicate determinations of samples. Total RNA was pooled from 20 HF. Scale bars, 50 μ m. Columns represent means \pm SEM; * $P<0.05$; ** $P<0.01$. ORS, outer root sheath.

doi:10.1371/journal.pone.0022564.g004

Though our pilot study was not designed to provide definitive proof for the validity of this hypothesis, our current data suggest that human HF epithelial stem cells are profoundly modulated by spermidine: Spermidine not only upregulates K15 and K19 protein expression *in situ* (Fig. 4A,D), but intrafollicular spermidine synthesis is also needed for normal K15 expression (Figure 4C). Moreover, one tested spermidine dose (0.5 μ M) stimulated *K15* promoter activity and colony forming efficiency and long-term proliferation of isolated, primary human HF epithelial progenitors (Fig. 5A,B,D). Our observation that the highest tested dose of spermidine (1 μ M) inhibited colony forming efficiency, *K15* promoter activity, and proliferation at day 6, might well result from the metabolism of excess spermidine to toxic compounds that enhance oxidative damage, such as hydrogen peroxide [29].

Although strong upregulation of K15 was evident in all of our experiments at the 0.5 μ M dose, K15 protein expression of K15-GFP+ cells *in vitro* was surprisingly downregulated on day 6 (Fig. 5D). This was in contrast to the upregulation of the corresponding mRNA expression that was observed at the same dose (Fig. 5C). It is possible that the rapid proliferation of the K15-GFP+ cells observed after 6 days of 0.5 μ M spermidine administration (as assessed by Ki-67 immunoreactivity, Fig. 5D) did not allow enough time for the K15 protein to assemble in the cells, and to reach the level of detection. It has also been shown before that polyamines have an effect on the post-translational regulation of proteins, affecting protein degradation by direct or indirect effect on proteases [63]. Therefore, changes in protein expression may not always correlate with the changes observed at the mRNA level.

Our study presents the first evidence that spermidine is a novel determinant in human eSCs biology, most notably of K15 and K19 expression by primary human epithelial progenitor cells *in situ* and *in vitro*. These findings are in line with the prior demonstration that ODC is expressed in the bulge region of the HF [55,64], where it colocalizes with that of K15 and K19 expression [52]. While polyamines are known to affect the keratin composition of wool follicles [21], it was previously unknown that polyamines actually regulates the expression of human eSC-associated keratins.

Moreover, we provide the first available evidence that inhibiting the key enzyme of polyamine synthesis (ODC) down-regulates K15 expression. Thus K15 expression *in situ* is profoundly regulated by spermidine, and both polyamines and ODC activity impact on the expression of this HF epithelial progenitor cell marker keratin. Our finding that ODC expression on the gene and protein level (and thus likely ODC activity) underlies a negative, dose-dependent feedback regulation by spermidine (Fig. 2B) underscores the apparent importance of keeping intrafollicular polyamine synthesis in check. That the highest dose of spermidine tested did not reduce ODC expression (Figure 1B) may suggest that adequate ODC activity remains needed as a part of the biological stress response to excessive spermidine levels.

We had hoped to obtain specific leads from our microarray analysis on how spermidine may exert its anagen-prolonging, stem cell-modulatory, and K15/K19-regulatory effects. While these results identified five novel intrafollicular *candidate* target genes for spermidine-mediated signaling (Table 1) that have not yet been investigated in the spermidine literature, these genes do not sufficiently explain the underlying mechanisms of action. However, the fact that the identified candidate genes are important for vital cell organelles and cell homeostasis fits well to the general concept that spermidine supports HF and eSC vitality.

For example, synoviolin (coded by *SYVN1*) is a ubiquitin ligase, which plays an important role in endoplasmic reticulum-associated protein degradation [44], the *NACA* gene encodes the nascent-polyptide-associated complex alpha polypeptide, a part of the protein translation chaperone complex [45], and *SLC25A3* is a mitochondrial phosphate carrier, which is essential for the aerobic synthesis of adenosine triphosphate [65]. Particularly interesting potential spermidine target gene is *POP3*, which belongs to the highly conserved popeye domain-containing family, and has been implicated in cell adherence and migration [47]. Although these microarray results could not be further validated since all available HF samples and sections had been consumed for the analyses reported here, our preliminary data provide new leads to previously unsuspected (direct or indirect) spermidine target genes in human tissue physiology.

An intriguing chance observation of our study was the finding that spermidine clearly up-regulated transcription of K77 in the HF of two female patients (Table 1). Since this keratin has previously been claimed to be exclusively expressed in eccrine glands, we are now following this lead up on the gene and protein level in order to obtain deeper insights into the unexpected and enigmatic functions that K77 may have in human HF biology, and why expression of this gene is so spermidine-sensitive.

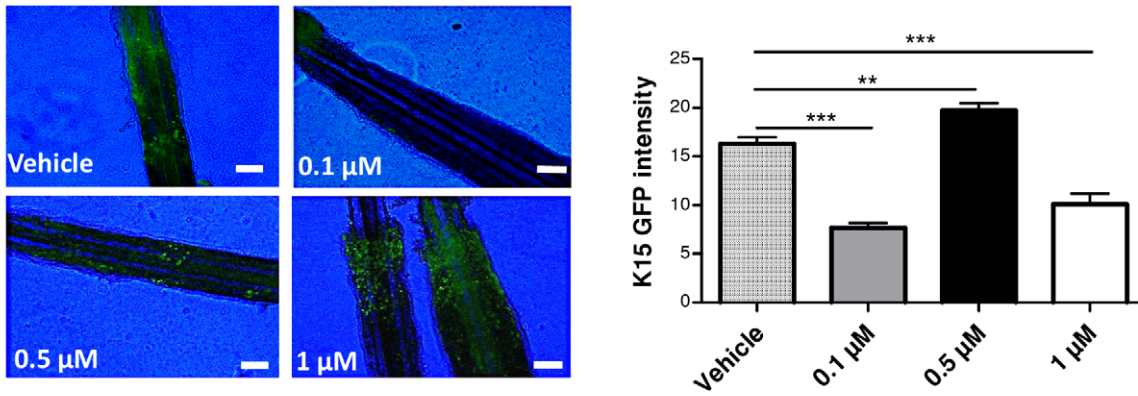
In summary, our study provides the first evidence that spermidine directly impacts on the growth, cycling, keratin expression and epithelial progenitor functions of human HF. Due to its anagen-prolonging effects, spermidine deserves rigorous clinical testing as a candidate anti-hair loss agent. It could become an adjuvant therapy for hair loss disorders associated with premature catagen induction, leading to telogen effluvium, and/or reduced hair shaft production. Moreover, we show that the complex regulatory role of polyamines in human epithelial biology *in situ* extends far beyond the mere stimulation of proliferation. Our study also documents that, to further dissect the full range of polyamine functions in normal human tissue physiology, human HF organ culture offers a highly instructive, clinically relevant research tool [34].

Materials and Methods

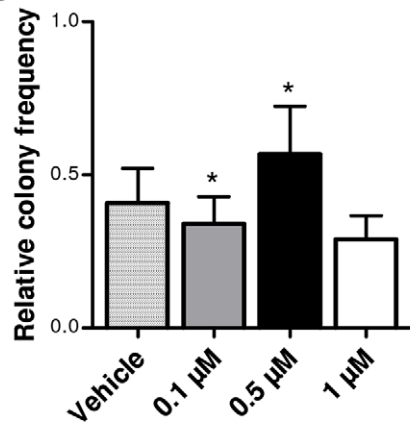
HF organ culture

Anagen VI HF were microdissected from normal temporofrontal human scalp skin obtained after written informed patient

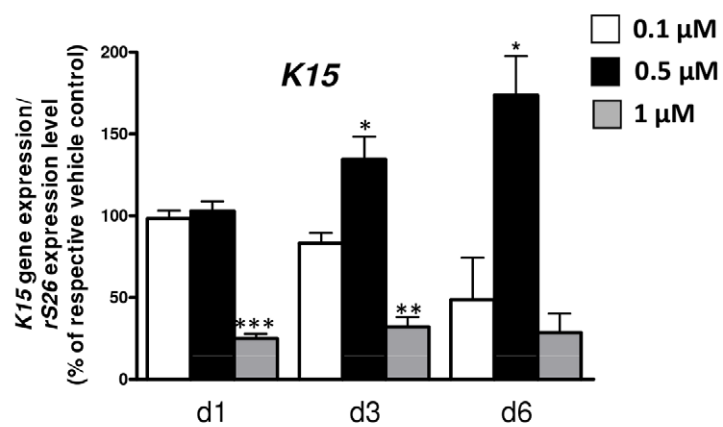
A



B



C



D

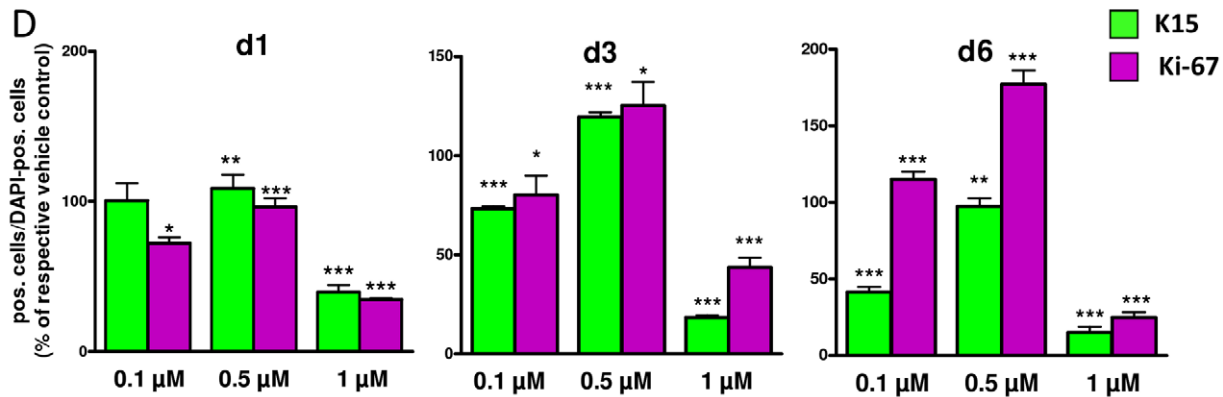


Figure 5. Spermidine modulates colony forming efficiency and K15 expression of isolated K15-GFP+ cells *in vitro*. **A.** Spermidine regulates expression of K15 promoter-driven GFP expression in hair follicles *in situ* in a dose-dependent manner; scale bars, 100 μm. **B.** Colony formation assay of isolated and cultured K15-GFP+ under different spermidine concentrations revealed that 0.5 μM spermidine significantly upregulated colony forming efficiency, whereas 0.1 and 1 μM reduced it. **C.** Quantitative RT-PCR of K15 in isolated and cultured K15-GFP+ cells under the presence of spermidine. K15 expression is presented in comparison to the housekeeping gene rS26. **D.** Evaluation of proliferative and apoptotic events in isolated and cultured K15-GFP+ cells under the influence of spermidine for 6 days. At three time points (d1, d3, and d6) cells were labeled with K15, Ki-67 and DAPI. K15- and Ki-67-positive cells were counted and expressed as percentage of all DAPI-positive cells (nuclei). Error bars represent means ± SEM; data were analysed by unpaired Student's t-test (vehicle group vs. test group; A, C) and two-way ANOVA test (within corresponding groups; B, D); * $P < 0.05$; ** $P < 0.01$; *** $P < 0.001$. doi:10.1371/journal.pone.0022564.g005

consent from ten healthy adult females undergoing routine facelift surgery, adhering to the Helsinki guidelines and following approval by the Institutional Research Ethics Committee of the University of Lübeck. In this clinically highly relevant *in vitro*-assay, amputated HF's in the growth phase of the hair cycle (anagen) continue for several days to produce a pigmented hair shaft at almost the normal speed of normal anagen HF's *in vivo*, and display cyclic growth activity *in vitro* by spontaneously entering into the regression phase of the hair cycle (catagen). For immunohistochemical studies, isolated HF's from four individuals were used for routine 6-day HF organ culture as previously described [17,18,32-35]. Spermidine (0.1, 0.5 or 1 μ M), DFMO (400 mg/l) or vehicle (distilled water) were administered once for each change of culture medium (every 48 h). After 6 days, all test and control HF's were embedded, snap-frozen, and processed for longitudinal cryosectioning. The frozen sections were stored at -80°C until used. HF's from one individual were used for a 24 h organ culture, and utilized for a genome-wide microarray assay and quantitative PCR (qPCR). HF's from four additional individuals were subjected to 48 h organ cultures. HF's from two individuals were used for *K15* promoter-driven green fluorescent protein (GFP) expression construct transfection (see below). HF's from an additional one female patient were used for a genome-wide microarray assay. HF's from one individual were used for isolating and culturing of K15-GFP positive cells.

Measurement of hair-growth parameters

Hair-shaft length measurements of vehicle and spermidine-treated HF's in organ culture was performed on d 0, 1, 4 and 6, using a Zeiss inverted binocular microscope with an eyepiece containing a graticule (Carl Zeiss, Oberkochen, Germany). It should be noted that hair-shaft elongation in serum-free human HF organ culture occurs at almost the same rate of normal hair growth *in vivo* [34]. HF cycle staging (*i.e.*, anagen VI *vs.* catagen) was assessed histologically after 6 days of organ culture using hematoxylin–eosin (Sigma-Aldrich, Taufkirchen, Germany) stained frozen sections. The hair cycle stage was classified according to accepted morphological criteria [32].

Analysis of HF matrix keratinocyte proliferation and apoptosis

To evaluate apoptotic cells in colocalization with a proliferation marker Ki-67 of cells in the HF, Ki-67/TUNEL (terminal dUTP nick endlabeling) double-immunofluorescence was used as described previously [33]. Briefly, 6- μ m cryosections were fixed in paraformaldehyde and ethanol-acetic acid (2:1) and labeled with a digoxigenin-deoxyUTP (ApopTag Fluorescein In Situ Apoptosis Detection Kit; Chemicon, Purchase, NY, USA) in the presence of terminal deoxynucleotidyl transferase (TdT), followed by incubation with a mouse anti-Ki-67 antiserum (Dako, Glostrup, Denmark). TUNEL-positive cells were visualized by an anti-digoxigenin FITC-conjugated antibody (ApopTag kit), whereas Ki-67 was detected by a rhodamine-labeled goat anti-mouse secondary antibody (Jackson Immuno-Research, West Grove, PA, USA). Counterstaining was performed with 4',6-diamidino-2-phenylindole (DAPI) (Roche Molecular Biochemicals GmbH, Mannheim, Germany). Negative controls were run by omitting TdT or the primary Ki-67 antibody and by observing negative immunoreactivity for these parameters in the expected human scalp skin compartments. For the quantitative evaluation and comparison of the double-staining, DAPI-, Ki-67-, or TUNEL-positive cells were counted in clearly defined reference regions. The number of DAPI-positive cells served as “total number of cells,” and the percentage of Ki-67-positive and/or

TUNEL-positive cells was calculated on this basis to enable comparison between vehicle and test groups.

ORS keratinocyte culture

Plucked HF's were digested using trypsin to obtain human ORS keratinocytes, as described previously [66]. ORS cultures were kept on a feeder layer of mitomycin-treated human dermal fibroblasts [67] in a 1:3 mixture of Ham's F12 (Biochrom, Berlin, Germany) and Dulbecco's modified Eagle's medium (Invitrogen-Life Technologies, Inc., Grand Island, NY, USA) supplemented with 0.1 nM cholera toxin, 5 μ g/ml insulin, 0.4 μ g/ml hydrocortisone, 2.43 μ g/ml adenine, 2 nM triiodothyronine, 10 ng/ml epidermal growth factor, 1 mM ascorbyl-2-phosphate, and antibiotics (all from Sigma-Aldrich Corp.).

Quantitative immunohistochemistry of K15, K19 and ODC

Expression of K15 and K19 was studied using our previously described tyramide signal amplification protocol and basic immunohistology protocols [35]. For ODC immunohistochemistry, rabbit anti-human ODC antibody (Abnova, 1:500) was used. As negative controls for all stainings, the respective primary antibodies were omitted. In addition, morphological criteria and reproduction of the previously published HF expression pattern of K15 and K19 was used as internal positive or negative controls [35], and for ODC, expression pattern in the epidermis was used as a positive control. Densitometric measurements of staining intensities in previously defined reference areas (quantitative immunohistomorphometry) we performed using the ImageJ software (National Institute of Health, Bethesda, USA), as previously described [33]. Statistical analysis was assessed by unpaired *t* test, using Graph Pad Prism 5.01 (Graph Pad Software, Inc., San Diego, CA, USA).

Microarray

Gene expression analysis of HF's from two female subjects (50 HF's from each subject) using an Agilent Human Whole Genome Oligo Microarray (44K) was performed by Abiol Ltd. (Debrecen, Hungary) as a commercial service (. Freshly isolated HF's (25/group, all derived from a single donor) were treated with vehicle or 0.5 μ M spermidine, and total RNA was isolated according to standard protocols (TRIzol; Invitrogen-Life Technologies). The quality of total RNA was controlled via an Agilent 2100 Bioanalyzer System (Agilent Technologies, Santa Clara, CA, USA). Linear amplification of RNA and hybridization of the whole genome oligo microarray were performed according to the manufacturer's protocols (Agilent Technologies). For analysis, after rejection of outlier features, the expressed genes showing at least 2.0-fold differential expression were further analyzed by a statistical test using the Cross-Gene Error Model based on Deviation from one (recommended by Agilent Technologies). Candidate genes were selected according to the following criteria: equidirectional expression changes in both examined individuals, value of $P < 0.05$, and changes ≥ 2 -fold. All data presented in this study is MIAME compliant and the raw data have been deposited in a MIAME compliant database, the NCBI's Gene Expression Omnibus (GEO).

qPCR

Analysis of expression of specific mRNA transcripts of keratins *K15*, *K19* and of *ODC* was performed by quantitative real-time PCR using the 5' nuclease assay (ABI PRISM 7000 Sequence Detection System, Applied Biosystems, Foster City, CA, USA). Total RNA was isolated from whole HF's using TRIzol and

digested with RQ1 RNase-free DNase (Promega, Madison, WI, USA) according to the manufacturer's protocol. After isolation, 1 μ g of RNA was reverse-transcribed into cDNA using 15 U of avian myeloblastosis virus reverse transcriptase (Promega) and 0.025 μ g/ μ l random primers (Promega). PCR amplification was performed using TaqMan primers and probes (assay identification number: Hs00267035_m1 for *K15*, Hs01051611_gH for *K19*, and Hs00189739_m1 for *ODC*) using the TaqMan Gene Expression Master Mix Protocol (Applied Biosystems). A transcript of *cyclophilin A (PPLA)*, Hs99999904_m1) was used as a housekeeping gene control. The amounts of the above-mentioned transcripts were normalized to those of the control genes using the $\Delta\Delta C_t$ method. During normalization, the geometric mean of the Ct values of the endogenous controls (provided that the SD of Ct values of the individual housekeeping genes, obtained in triplicate determinations, was <0.5) was used to normalize gene expression of the given gene of interest.

Isolation and in vitro studies with K15-GFP+ cells

Transfection of isolated hair follicles. Scalp skin was dissected into approximately 0.5 cm^2 pieces, which were washed with PBS (37°C) to remove cell debris. These pieces were incubated overnight in Williams E Medium (Biochrom, Cambridge, UK) supplemented with 0.01% w/v reconstituted Dispase® (Invitrogen-Gibco, Grand Island, NY, USA) at 4°C. After washing with PBS, the epithelial core of single, full-length HF's were carefully plucked out from the tissue fragments with microdissection tweezers, leaving the HF dermal sheath retained in the skin. For further experiments, the HF's were collected and cultured in K-SF medium (Invitrogen-Gibco, Carlsbad, CA, USA) or directly transfected with a human *K15* promoter-driven GFP expression construct as described [37,38]. Direct immunofluorescence microscopic analysis was used to evaluate the expression of GFP. As negative controls, Dispase® treated, microdissected and only Lipofectamine® (Invitrogen, Karlsruhe, Germany) treated HF's were used. For positive controls an ubiquitously GFP expressing construct was used to transfect the HF's. All samples were viewed and photographed using a Keyence BZ 8000 fluorescence microscope. Densitometric measurements of GFP intensity and statistical analysis were performed as previously described [37,38].

Isolation, selection and culture of human K15-GFP+ cells. To isolate and culture K15-GFP+ cells positively transfected HF's were processed as described previously [37,38]. To test the influence of spermidine, it was added to the K15-GFP+ cell culture with an adjusted concentration of 0.1, 0.5, and 1 μ M.

Semi- and quantitative RT-PCR for expression analysis of K15. Total RNA was isolated from an equivalent number of control and K15-GFP+ cells (~10,000 cells/dish) of vehicle and spermidine treated K15-GFP+ cells by using RNeasy Mini Kit (Qiagen, Germany) according to the manufacturer's protocol. Total RNA (100 ng) was reverse transcribed in 20 μ l using the Perkin-Elmer RNA PCR kit (Branchburg, NJ). For quantitative analysis of *K15* and the housekeeping gene *ribosomal protein S26 (rS26)*, parts of the cDNA products (2 μ l) were subjected to PCR analysis. *K15* cDNA was amplified with primers *K15*-f (5'-GGAGGTGGAAGCCGAAGTAT-3') and *K15*-r (5'-GAGA-GGAGACCACCATCGCC-3'). For comparative analysis *rS26* was amplified with primers *rS26*-f (5'-CCGTGCCTCCAAG-ATGACAAAG-3') and *rS26*-r (5'-ACTCAGCTCCTTACAT-GGGCTT-3'). For quantitative qPCR expression analysis of *K15*, *GFP* and *rS26* 100 ng RNA was reverse transcribed in a total of 20 μ l using the LightCycler® RNA-Master-SYBR-Green-I-kit and the LightCycler® 2.0 instrument (Roche). For qPCR analysis of *K15* and *rS26* cDNA was amplified with primers as described

above. Vehicle treated K15-GFP+ cells were used as controls. For quantification analysis the LightCycler® Software 4.05 (Roche) was used. The results represent three independent experiments and data expressed as means \pm SEM.

Colony forming efficiency. For colony forming efficiency assays under the influence of spermidine K15-GFP+ cells were seeded onto a 35 mm culture dish coated with collagen IV and fibronectin (100 cells/well). K15-GFP+ cells were cultured as previously described [37,38]. The analysis of the clonal potential was carried out as previously described [37,38]. Vehicle treated K15-GFP+ cells were used as controls. The results represent 3 independent experiments and data expressed as means \pm SEM.

Cell proliferation. For the detection of proliferating K15-GFP+ cells after 1 day, 3 days, and 6 days under spermidine treatment, K15-, Ki-67-, and DAPI labeling was performed as described previously [37,38]. Vehicle treated K15-GFP+ cells were used as control for the Ki-67 reaction. The results were expressed as mean percentage of treated cells compared to the vehicle control sample of 3 independent experiments and data expressed as means \pm SEM.

Cell proliferation assays

Primary human keratinocytes were isolated as described by Rheinwald and Green [68] from fronto-temporal scalp skin specimens, obtained with written informed consent during routine face-lift surgery (Caucasian females over 45 y). The East London and City Health Authority Research Ethics Committee approved the use of redundant human skin for this study. After isolation, keratinocytes were cultured in keratinocyte serum free medium (K-SFM) (Invitrogen, Paisley, UK) at 37°C in a humidified atmosphere of 5% CO₂/95% air. Spermidine (Sigma-Aldrich, Poole, UK) was added to the culture medium at 0.1, 0.5, and 1.0 μ M concentrations for 48 h. After 48 h cell proliferation was assayed using fluorometric reagent Cell Quanti Blue (BioAssay Systems, CA USA). The Cell Quanti Blue reagent was diluted 1 in 10 in K-SFM and added to the cells for 1 h. Fluorescence was measured using a Bio Tek Synergy HT plate reader with KC4 software (Bio Tek, VT, USA) with a 530 nm excitation filter and a 590 nm emission filter.

Cell cycle analysis by propidium iodide flow cytometry

After 24 h +/- spermidine primary human keratinocytes were trypsinised, washed with PBS and fixed in 70% ethanol at 4°C overnight. Cells were resuspended in 50 μ g/ml propidium iodide (PI) (Sigma-Aldrich), 100 μ g RNaseA (Sigma-Aldrich), 3.8 mM sodium citrate in PBS and incubated at 4°C overnight. For each sample 100,000 cells were analysed using a LSRII flow cytometer with FACSDiva software (v 5.1.03) (both BD Biosciences, CA USA). The detector was set to linear, PI excitation at 488 nm and emission collected in the 610–620 channel, cells were gated on width and area to exclude doublets.

Acknowledgments

The excellent technical assistance of Astrid Becker and Balázs I. Tóth are gratefully acknowledged. We are also most grateful to our collaborating surgeon, Dr. Wolfgang Funk (Klinik Dr. Kozłowski, Munich, Germany), without whose generous support by the current study would not have been possible. The professional insight and generous support of Giammaria Giuliani is also gratefully acknowledged.

Author Contributions

Conceived and designed the experiments: YR ST TB MPP RP. Performed the experiments: YR ST TB MHAB KS MPP WH. Analyzed the data: YR ST TB MHAB KS MPP WH. Contributed reagents/materials/analysis tools: MP. Wrote the paper: YR ST MPP RP MP TB KS WH.

References

- Pegg AE (1986) Recent advances in the biochemistry of polyamines in eukaryotes. *Biochem J* 234: 249–262.
- Sugiura K, Min JZ, Toyooka T, Inagaki S (2008) Rapid, sensitive and simultaneous determination of fluorescence-labeled polyamines in human hair by high-pressure liquid chromatography coupled with electrospray-ionization time-of-flight mass spectrometry. *J Chromatogr A* 1205: 94–102.
- Johnson DA, Fields C, Fallon A, Fitzgerald ME, Viar MJ, et al. (2002) Polyamine-dependent migration of retinal pigment epithelial cells. *Invest Ophthalmol Vis Sci* 43: 1228–1233.
- McCormack SA, Viar MJ, Johnson LR (1993) Polyamines are necessary for cell migration by a small intestinal crypt cell line. *Am J Physiol* 264: G367–374.
- Pegg AE, McCann PP (1982) Polyamine metabolism and function. *Am J Physiol* 243: C212–221.
- Pietila M, Pirinen E, Keskitalo S, Juutinen S, Pasonen-Seppanen S, et al. (2005) Disturbed keratinocyte differentiation in transgenic mice and organotypic keratinocyte cultures as a result of spermidine/spermine N-acetyltransferase overexpression. *J Invest Dermatol* 124: 596–601.
- Vuohelainen S, Pirinen E, Cerrada-Gimenez M, Keinänen TA, Uimari A, et al. (2009) Spermidine is indispensable in differentiation of 3T3-L1 fibroblasts to adipocytes. *J Cell Mol Med* 14(6B): 1683–1692.
- Davidson NE, Hahm HA, McCloskey DE, Woster PM, Casero RA, Jr. (1999) Clinical aspects of cell death in breast cancer: the polyamine pathway as a new target for treatment. *Endocr Relat Cancer* 6: 69–73.
- Oredsson SM (2003) Polyamine dependence of normal cell-cycle progression. *Biochem Soc Trans* 31: 366–370.
- Scorcioni F, Corti A, Davalli P, Astancolle S, Bettuzzi S (2001) Manipulation of the expression of regulatory genes of polyamine metabolism results in specific alterations of the cell-cycle progression. *Biochem J* 354: 217–223.
- Ballas SK, Mohandas N, Marton LJ, Shohet SB (1983) Stabilization of erythrocyte membranes by polyamines. *Proc Natl Acad Sci USA* 80: 1942–1946.
- Yamaguchi T, Ozaki S, Shimomura T, Terada S (2007) Membrane perturbations of erythrocyte ghosts by spectrin release. *J Biochem* 141: 747–754.
- Kaerberlein M (2009) Spermidine surprise for a long life. *Nat Cell Biol* 11: 1277–1278.
- Bettuzzi S, Davalli P, Astancolle S, Pinna C, Roncaglia R, et al. (1999) Coordinate changes of polyamine metabolism regulatory proteins during the cell cycle of normal human dermal fibroblasts. *FEBS Lett* 446: 18–22.
- Gugliucci A (2004) Polyamines as clinical laboratory tools. *Clin Chim Acta* 344: 23–35.
- Moinard C, Cynober L, de Bandt JP (2005) Polyamines: metabolism and implications in human diseases. *Clin Nutr* 24: 184–197.
- Paus R, Cotsarelis G (1999) The biology of hair follicles. *N Engl J Med* 341: 491–497.
- Schneider MR, Schmidt-Ullrich R, Paus R (2009) The hair follicle as a dynamic miniorgan. *Curr Biol* 19: R132–142.
- Pietila M, Parkkinen JJ, Alhonen L, Janne J (2001) Relation of skin polyamines to the hairless phenotype in transgenic mice overexpressing spermidine/spermine N-acetyltransferase. *J Invest Dermatol* 116: 801–805.
- Soler AP, Gilliard G, Megosh LC, O'Brien TG (1996) Modulation of murine hair follicle function by alterations in ornithine decarboxylase activity. *J Invest Dermatol* 106: 1108–1113.
- Hynd PI, Nancarrow MJ (1996) Inhibition of polyamine synthesis alters hair follicle function and fiber composition. *J Invest Dermatol* 106: 249–253.
- Fashe T, Keinänen T, Grigorenko N, Khomutov A, Janne J, et al. (2009) Cutaneous application of α -Methylspermidine activates the growth of resting hair follicles in mice. *Amino Acid* 38(2): 583–590.
- Coleman CS, Pegg AE, Megosh LC, Guo Y, Sawicki JA, et al. (2002) Targeted expression of spermidine/spermine N1-acetyltransferase increases susceptibility to chemically induced skin carcinogenesis. *Carcinogenesis* 23: 359–364.
- Megosh L, Gilmour SK, Rosson D, Soler AP, Blessing M, et al. (1995) Increased frequency of spontaneous skin tumors in transgenic mice which overexpress ornithine decarboxylase. *Cancer Res* 55: 4205–4209.
- Panteleyev AA, Christiano AM, O'Brien TG, Sundberg JP (2000) Ornithine decarboxylase transgenic mice as a model for human atrichia with papular lesions. *Exp Dermatol* 9: 146–151.
- Pietila M, Alhonen L, Halmekyto M, Kanter P, Janne J, et al. (1997) Activation of polyamine catabolism profoundly alters tissue polyamine pools and affects hair growth and female fertility in transgenic mice overexpressing spermidine/spermine N1-acetyltransferase. *J Biol Chem* 272: 18746–18751.
- Smith MK, Trempus CS, Gilmour SK (1998) Co-operation between follicular ornithine decarboxylase and v-Ha-ras induces spontaneous papillomas and malignant conversion in transgenic skin. *Carcinogenesis* 19: 1409–1415.
- Suppola S, Pietila M, Parkkinen JJ, Korhonen VP, Alhonen L, et al. (1999) Overexpression of spermidine/spermine N1-acetyltransferase under the control of mouse metallothionein I promoter in transgenic mice: evidence for a striking post-transcriptional regulation of transgene expression by a polyamine analogue. *Biochem J* 338(Pt 2): 311–316.
- Ramot Y, Pietila M, Giuliani G, Rinaldi F, Alhonen L, et al. (2010) Polyamines and hair: a couple in search of perfection. *Exp Dermatol* 19(9): 784–790.
- Hamzavi I, Tan E, Shapiro J, Lui H (2007) A randomized bilateral vehicle-controlled study of eflornithine cream combined with laser treatment versus laser treatment alone for facial hirsutism in women. *J Am Acad Dermatol* 57: 54–59.
- Wolf JE, Jr., Shander D, Huber F, Jackson J, Lin CS, et al. (2007) Randomized, double-blind clinical evaluation of the efficacy and safety of topical eflornithine HCl 13.9% cream in the treatment of women with facial hair. *Int J Dermatol* 46: 94–98.
- Klopper JE, Sugawara K, Al-Nuaimi Y, Gaspar E, van Beek N, et al. (2010) Methods in hair research: how to objectively distinguish between anagen and catagen in human hair follicle organ culture. *Exp Dermatol* 19(3): 305–312.
- Gaspar E, Hardenbicker C, Bodo E, Wenzel B, Ramot Y, et al. (2009) Thyrotropin releasing hormone (TRH): a new player in human hair-growth control. *FASEB J* 24: 373–403.
- Philpott MP, Sanders D, Westgate GE, Kealey T (1994) Human hair growth in vitro: a model for the study of hair follicle biology. *J Dermatol Sci* 7(Suppl): S55–72.
- Ramot Y, Biró T, Tiede S, Tóth BI, Langan EA, et al. (2010) Prolactin—a novel neuroendocrine regulator of human keratin expression in situ. *FASEB J* 24: 1768–1779.
- Pales JL, Lopez A, Vidal S (1984) Effects of polyamines on platelet aggregation. *Scand J Haematol* 32: 241–244.
- Tiede S, Bohm K, Meier N, Funk W, Paus R (2010) Endocrine controls of primary adult human stem cell biology: Thyroid hormones stimulate keratin 15 expression, apoptosis, and differentiation in human hair follicle epithelial stem cells in situ and in vitro. *Eur J Cell Biol* 89: 769–777.
- Tiede S, Koop N, Klopper JE, Fassler R, Paus R (2009) Nonviral in situ green fluorescent protein labeling and culture of primary, adult human hair follicle epithelial progenitor cells. *Stem Cells* 27: 2793–2803.
- Ohya M, Terunuma A, Tock CL, Radonovich MF, Pise-Masison CA, et al. (2006) Characterization and isolation of stem cell-enriched human hair follicle bulge cells. *J Clin Invest* 116: 249–260.
- Paus R, Foitzik K (2004) In search of the “hair cycle clock”: a guided tour. *Differentiation* 72: 489–511.
- Foitzik K, Krause K, Conrad F, Nakamura M, Funk W, et al. (2006) Human scalp hair follicles are both a target and a source of prolactin, which serves as an autocrine and/or paracrine promoter of apoptosis-driven hair follicle regression. *Am J Pathol* 168: 748–756.
- Sugawara K, Schneider MR, Dahlhoff M, Klopper JE, Paus R (2010) Cutaneous consequences of inhibiting EGF receptor signaling in vivo: normal hair follicle development, but retarded hair cycle induction and inhibition of adipocyte growth in Egrf(Wa5) mice. *J Dermatol Sci* 57: 155–161.
- Nancarrow MJ, Nesci A, Hynd PI, Powell BC (1999) Dynamic expression of ornithine decarboxylase in hair growth. *Mech Dev* 84: 161–164.
- Mehner M, Sommer T, Jarosch E (2010) ERAD ubiquitin ligases: multifunctional tools for protein quality control and waste disposal in the endoplasmic reticulum. *Bioessays* 32: 905–913.
- Liu Y, Hu Y, Li X, Niu L, Teng M (2010) The crystal structure of the human nascent polypeptide-associated complex domain reveals a nucleic acid-binding region on the NACA subunit. *Biochemistry* 49: 2890–2896.
- Mayr JA, Merkel O, Kohlwein SD, Gebhardt BR, Bohles H, et al. (2007) Mitochondrial phosphate-carrier deficiency: a novel disorder of oxidative phosphorylation. *Am J Hum Genet* 80: 478–484.
- Kim M, Jang HR, Haam K, Kang TW, Kim JH, et al. (2010) Frequent silencing of popeye domain-containing genes, BVES and POPDC3, is associated with promoter hypermethylation in gastric cancer. *Carcinogenesis* 31: 1685–1693.
- Cotsarelis G (2006) Epithelial stem cells: a folliculocentric view. *J Invest Dermatol* 126: 1459–1468.
- Tjabringa GS, Zandieh-Doulabi B, Helder MN, Knippenberg M, Wuisman PI, et al. (2008) The polyamine spermine regulates osteogenic differentiation in adipose stem cells. *J Cell Mol Med* 12: 1710–1717.
- Hu X, Washington S, Verderame MF, Manni A (2005) Interaction between Polyamines and the Mitogen-Activated Protein Kinase Pathway in the Regulation of Cell Cycle Variables in Breast Cancer Cells. *Cancer Res* 65: 11026–11033.
- Nasizadeh S, Myhre L, Thiman L, Alm K, Oredsson S, et al. (2005) Importance of polyamines in cell cycle kinetics as studied in a transgenic system. *Exp Cell Res* 308: 254–264.
- Klopper JE, Tiede S, Brinckmann J, Reinhardt DP, Meyer W, et al. (2008) Immunophenotyping of the human bulge region: the quest to define useful in situ markers for human epithelial hair follicle stem cells and their niche. *Exp Dermatol* 17: 592–609.
- Pegg AE (2008) Spermidine/spermine-N(1)-acetyltransferase: a key metabolic regulator. *Am J Physiol Endocrinol Metab* 294: E995–1010.
- Paus R, Olsen EA, Messenger A (2008) Hair Growth Disorders. In: Wolff K GL, Katz SI, Gilchrist B, Paller AS, Leffell DJ, eds. *New York: Fitzpatrick's Dermatology in General Medicine*. pp 753–777.
- Nancarrow MJ, Powell BC, Hynd PI (1999) Expression of ornithine decarboxylase during embryonic development of wool follicles. *Exp Dermatol* 8: 326–328.
- Langbein L, Schweizer J (2005) Keratins of the human hair follicle. *Int Rev Cytol* 243: 1–78.
- Germer EW, Meyskens FL, Jr. (2004) Polyamines and cancer: old molecules, new understanding. *Nat Rev Cancer* 4: 781–792.

58. Thomas T, Thomas TJ (2001) Polyamines in cell growth and cell death: molecular mechanisms and therapeutic applications. *Cell Mol Life Sci* 58: 244–258.
59. Eisenberg T, Knauer H, Schauer A, Buttner S, Ruckstuhl C, et al. (2009) Induction of autophagy by spermidine promotes longevity. *Nat Cell Biol* 11: 1305–1314.
60. Paus R (2011) A neuroendocrinological perspective on human hair follicle pigmentation. *Pigment Cell Melanoma Res* 24: 89–106.
61. Bodo E, Tobin DJ, Kamenisch Y, Biro T, Berneburg M, et al. (2007) Dissecting the impact of chemotherapy on the human hair follicle: a pragmatic in vitro assay for studying the pathogenesis and potential management of hair follicle dystrophy. *Am J Pathol* 171: 1153–1167.
62. Harries MJ, Paus R (2010) The pathogenesis of primary cicatricial alopecias. *Am J Pathol* 177: 2152–2162.
63. Childs AC, Mehta DJ, Gerner EW (2003) Polyamine-dependent gene expression. *Cell Mol Life Sci* 60: 1394–1406.
64. Sundberg JP, Erickson AA, Roop DR, Binder RL (1994) Ornithine decarboxylase expression in cutaneous papillomas in SENCAR mice is associated with altered expression of keratins 1 and 10. *Cancer Res* 54: 1344–1351.
65. Palmieri F (2004) The mitochondrial transporter family (SLC25): physiological and pathological implications. *Pflügers Arch* 447: 689–709.
66. Limat A, Noser FK (1986) Serial cultivation of single keratinocytes from the outer root sheath of human scalp hair follicles. *J Invest Dermatol* 87: 485–488.
67. Limat A, Hunziker T, Boillat C, Bayreuther K, Noser F (1989) Post-mitotic human dermal fibroblasts efficiently support the growth of human follicular keratinocytes. *J Invest Dermatol* 92: 758–762.
68. Rheinwald JG, Green H (1977) Epidermal growth factor and the multiplication of cultured human epidermal keratinocytes. *Nature* 265: 421–424.
69. Moll R, Divo M, Langbein L (2008) The human keratins: biology and pathology. *Histochem Cell Biol* 129: 705–733.
70. Gingold-Belfer R, Bergman M, Alcalay Y, Schlesinger H, Aravot D, et al. (2011) Popeye domain-containing 1 is down-regulated in failing human hearts. *Int J Mol Med* 27: 25–31.